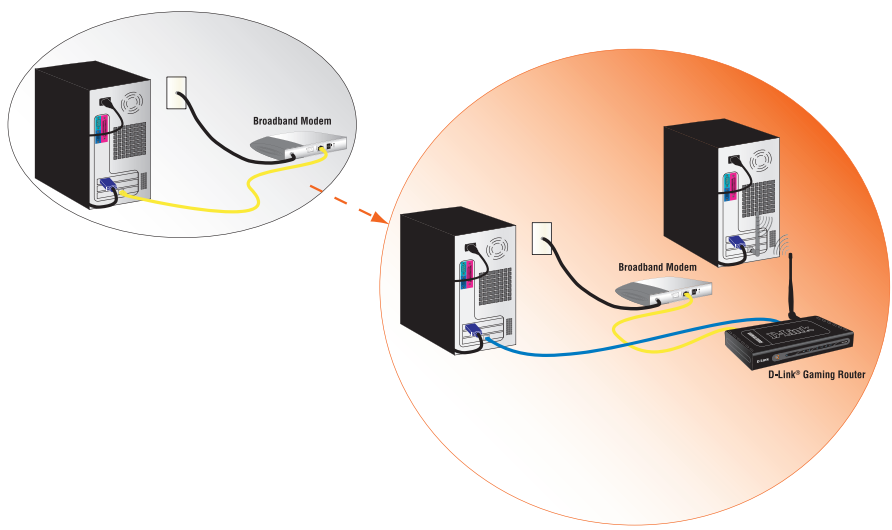


Existing Network > New Network



MODEL: DGL-4300

Vertical Stands and Rubber Feet

Vertical stacking stands are provided so you can place your D-Link[®] Gaming Router in a vertical position. Rubber Feet are provided to allow proper ventilation when the D-Link[®] Gaming Router is placed horizontally or stacked upon other D-Link[®] stackable products.

To attach the vertical stands, simply slide the vertical stands into the slotted grooves on the top and bottom panels of the D-Link[®] Gaming Router.

To attach the rubber feet, simply press the rubber feet into the four corners on the bottom panel of the D-Link[®] Gaming Router.



Wireless Antenna

Attach the wireless antenna to the rear panel of the DGL-4300 by turning the knob at the base of the antenna until it is fully attached.



Hardware Installation

TCP/IP Settings

IP Address:

Subnet Mask:

Default Gateway:

Primary DNS:

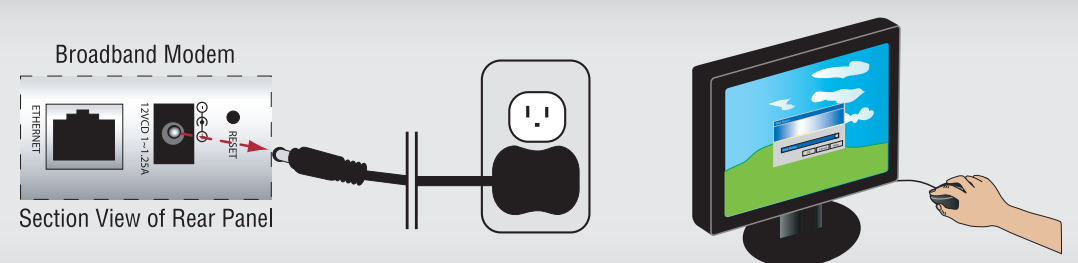
Secondary DNS:

PPPoE Settings

Name:

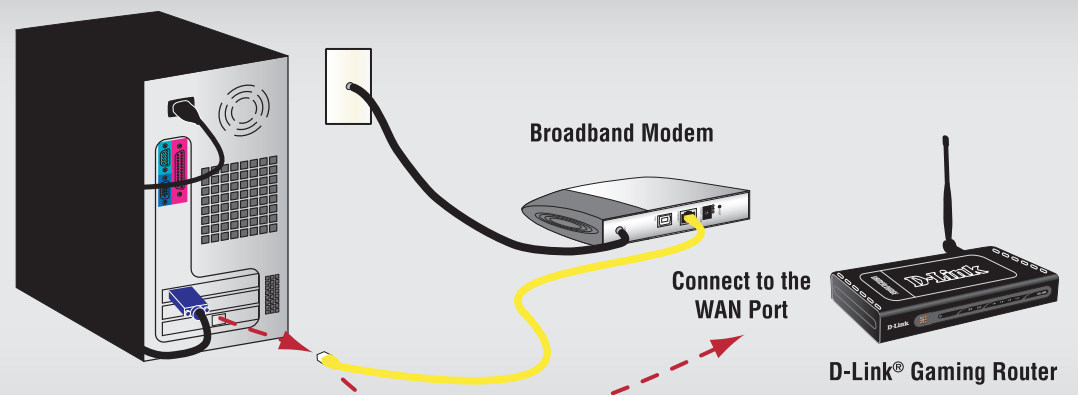
Password:

1 Unplug the power from your broadband modem and shut down your computer.

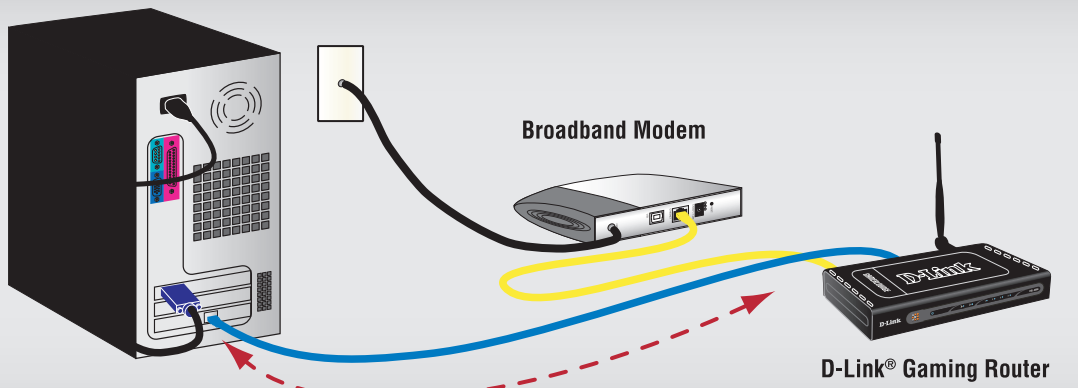


2 Disconnect the Ethernet cable connected from your computer to your broadband modem. Leave the end connected to your broadband modem attached.

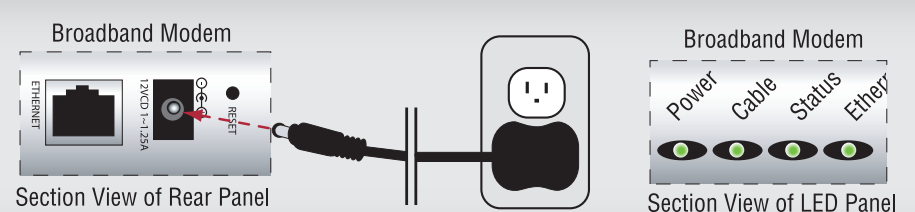
3 Connect the end of the Ethernet cable removed from your computer to the WAN port on the router.



4 Connect the provided Ethernet cable from a numbered port on the router to your computer.

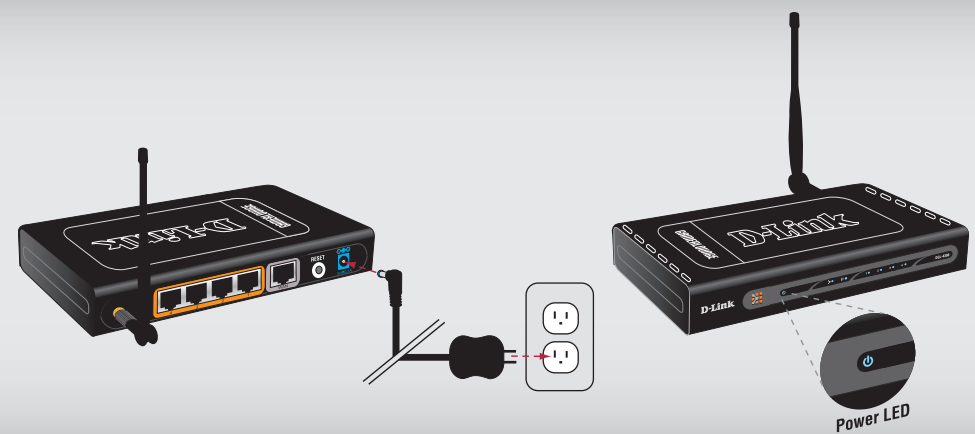


5 Plug the power back into your broadband modem and wait for the broadband modem to synchronize to the network (refer to the Modem manual for information on this).



6 Plug the power adapter (provided with the router) into the router, then connect the other end to a power outlet and verify that the POWER LED on the router is on.

Note: If the Power LED is not lit, verify that the power adapter is properly connected to the D-Link[®] Gaming Router and to a working power outlet.



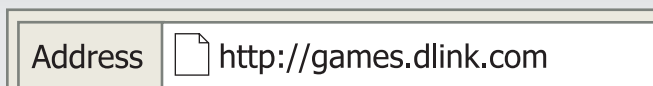
7 Power on your computer.

8 Verify that the WAN and LAN port (corresponding to where the computer was connected in step 4) LEDs are on.

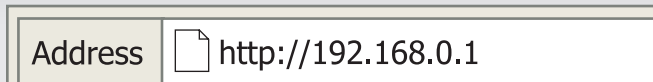
Note: If the WAN LED is not lit, check the connection of the Ethernet cable from the Broadband modem to the WAN port of the D-Link[®] Gaming Router as detailed in steps 2-3. If the LAN LED is not lit, check the connection of the Ethernet cable as detailed in step 4.



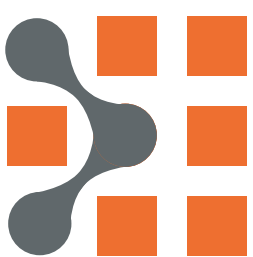
9 Launch your web browser and type in a web address such as <http://games.dlink.com> to verify that you have an Internet connection.



10 If a web address is not accessible, enter <http://192.168.0.1> in your web browser address bar. Once the main screen appears, press the button labeled **Internet Connection Setup Wizard** and proceed through the wizard.



For additional details on the Internet Connection Setup Wizard, please refer to the User Manual on the CD-ROM



Support
D-Link's website contains the latest user documentation and software updates for D-Link[®] products. D-Link[®] provides free technical support for customers within the United States and Canada for the duration of the product's warranty period. Please refer to the user manual on the CD-ROM and the Help section in the Gaming Router's web-based management interface for support. U.S. and Canadian customers can contact D-Link[®] Technical Support through our website or by phone.

United States
Telephone • 877-453-5465 (Twenty four hours a day, seven days a week)
World Wide Web • <http://support.dlink.com>
E-mail • support@dlink.com

Canada
Telephone • 800-361-5265 (Monday through Friday, 7:30am to 12:00am EST)
World Wide Web • <http://support.dlink.ca>
E-mail • support@dlink.ca