



**DIR-878**

**AC1900 MU-MIMO Wi-Fi Gigabit Router**

## BEFORE YOU BEGIN

### *Delivery Package*

- Router DIR-878
- Power adapter DC 12V/1.5A
- Ethernet cable (CAT 5E)
- “*Quick Installation Guide*” (brochure).

If any of the items are missing, please contact your reseller.

The “*User Manual*” and “*Quick Installation Guide*” documents are available on D-Link website (see [www.dlink.ru](http://www.dlink.ru)).



**Using a power supply with a different voltage rating than the one included will cause damage and void the warranty for this product.**

## Default Settings

<b>IP address of wireless router</b>		<b>192.168.0.1</b>
<b>Username (login)</b>		<b>admin</b>
<b>Password</b>		<b>admin</b>
<b>Name of wireless network (SSID)</b>	<b>2.4GHz</b>	<b>DIR-878</b>
	<b>5GHz</b>	<b>DIR-878-5G</b>
<b>Network key (PSK password)</b>		see WPS PIN on the barcode label on the bottom panel of the device

**!** Router DIR-878 with default settings cannot connect to the Internet. To get started, please set your own password for access to the web-based interface and change the WLAN name (SSID); then, if needed, configure other settings recommended by your ISP.

## ***System Requirements and Equipment***

- A computer with any operating system that supports a web browser.
- A web browser to access the web-based interface of the router:
  - Apple Safari 8 and later
  - Google Chrome 48 and later
  - Microsoft Internet Explorer 10 and later
  - Microsoft Edge 20.10240 and later
  - Mozilla Firefox 44 and later
  - Opera 35 and later.
- A NIC (Ethernet or Wi-Fi adapter) to connect to the router.
- An 802.11a, b, g, n or ac Wi-Fi adapter to create a wireless network.

## CONNECTING TO PC

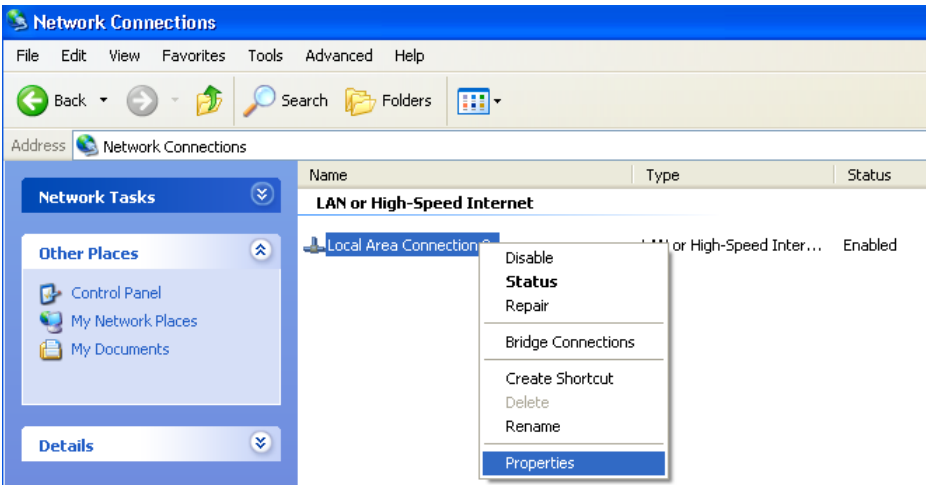
### *PC with Ethernet Adapter*

1. Make sure that your PC is powered off.
2. Connect an Ethernet cable between any of LAN ports located on the back panel of the router and the Ethernet port of your PC.
3. Connect the power cord to the power connector port on the back panel of the router, then plug the power adapter into an electrical outlet or power strip.
4. Turn on the router by pressing the **POWER** button on its back panel.
5. Turn on your PC and wait until your operating system is completely loaded.

Now you should configure your PC to obtain an IP address automatically (as DHCP client).

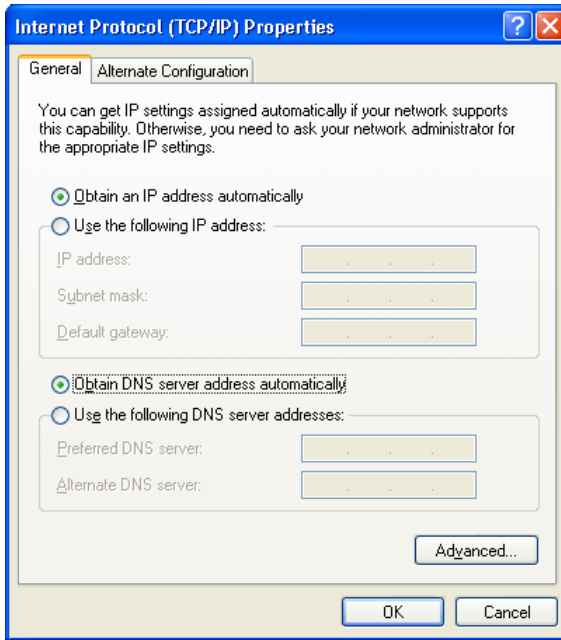
## Obtaining IP Address Automatically in OS Windows XP

1. Click the **Start** button and proceed to the **Control Panel > Network and Internet Connections > Network Connections** window.
2. In the **Network Connections** window, right-click the relevant **Local Area Connection** icon and select the **Properties** line in the menu displayed.



3. In the **Local Area Connection Properties** window, on the **General** tab, select the **Internet Protocol (TCP/IP)** line. Click the **Properties** button.

4. Select the **Obtain an IP address automatically** and **Obtain DNS server address automatically** radio buttons. Click the **OK** button.

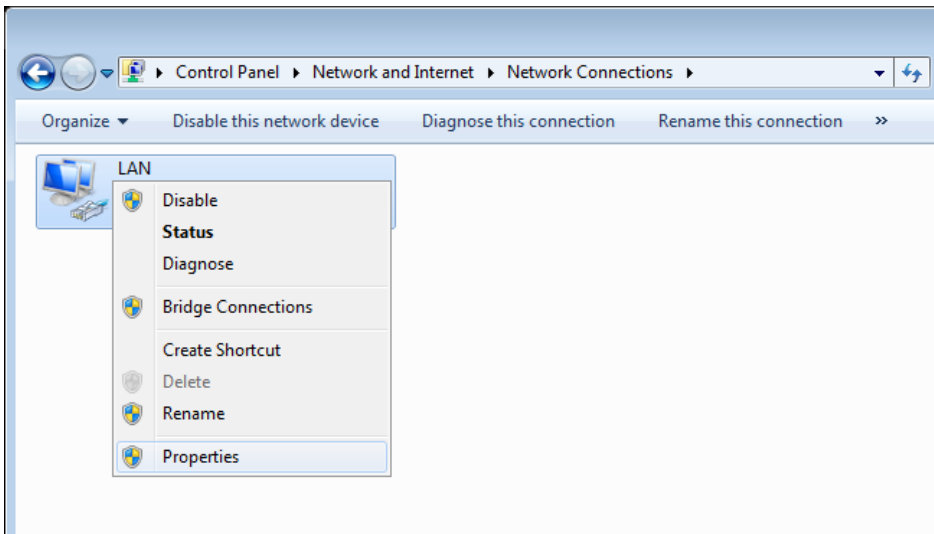


5. Click the **OK** button in the connection properties window.

Now your computer is configured to obtain an IP address automatically.

## Obtaining IP Address Automatically in OS Windows 7

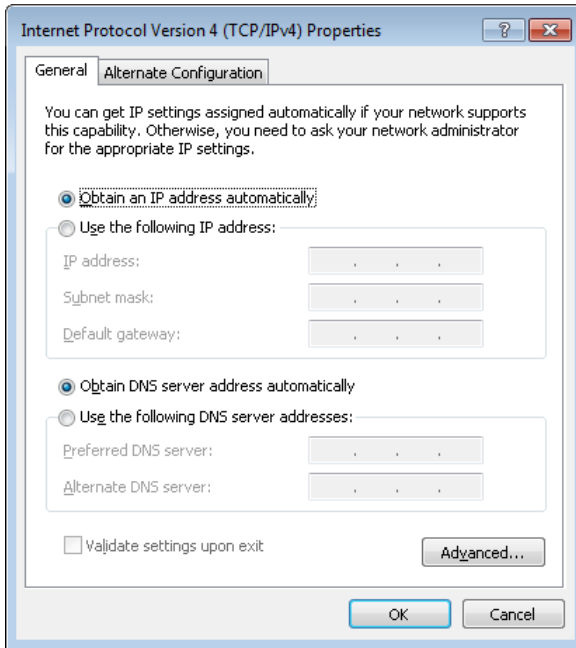
1. Click the **Start** button and proceed to the **Control Panel** window.
2. Select the **Network and Sharing Center** section. (If the Control Panel has the category view (the **Category** value is selected from the **View by** drop-down list in the top right corner of the window), choose the **View network status and tasks** line under the **Network and Internet** section.)
3. In the menu located on the left part of the window, select the **Change adapter settings** line.
4. In the opened window, right-click the relevant **Local Area Connection** icon and select the **Properties** line in the menu displayed.



5. In the **Local Area Connection Properties** window, on the **Networking** tab, select the **Internet Protocol Version 4 (TCP/IPv4)** line. Click the **Properties** button.



6. Select the **Obtain an IP address automatically** and **Obtain DNS server address automatically** radio buttons. Click the **OK** button.



7. Click the **OK** button in the connection properties window.  
Now your computer is configured to obtain an IP address automatically.

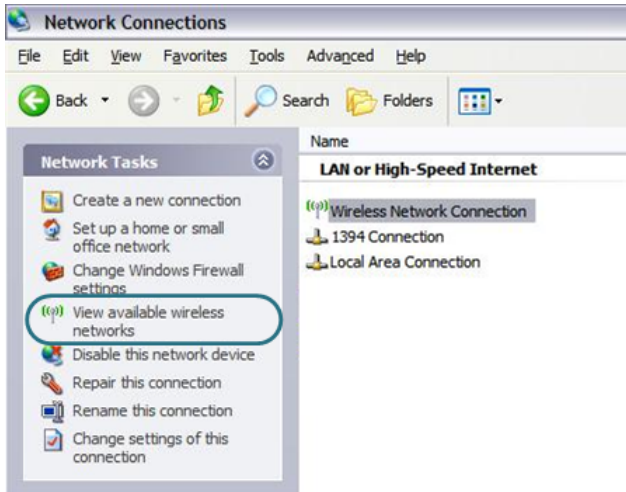
## ***PC with Wi-Fi Adapter***

1. Connect the power cord to the power connector port on the back panel of the router, then plug the power adapter into an electrical outlet or power strip.
2. Turn on the router by pressing the **POWER** button on its back panel.
3. Turn on your PC and wait until your operating system is completely loaded.
4. Turn on your Wi-Fi adapter. As a rule, modern notebooks with built-in wireless NICs are equipped with a button or switch that turns on/off the wireless adapter (refer to your PC documents). If your PC is equipped with a pluggable wireless NIC, install the software provided with your Wi-Fi adapter.

Now you should configure your Wi-Fi adapter.

## Configuring Wi-Fi Adapter in OS Windows XP

1. Click the **Start** button and proceed to the **Control Panel > Network and Internet Connections > Network Connections** window.
2. Select the icon of the wireless network connection and make sure that your Wi-Fi adapter is on.



3. Search for available wireless networks.
4. In the opened **Wireless Network Connection** window, select the wireless network **DIR-878** (for operating in the 2.4GHz band) or **DIR-878-5G** (for operating in the 5GHz band) and click the **Connect** button.
5. In the opened window, enter the network key (see WPS PIN on the barcode label on the bottom panel of the device) in the **Network key** and **Confirm network key** fields and click the **Connect** button.

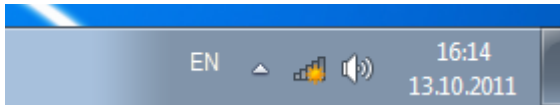
After that the **Wireless Network Connection Status** window appears.



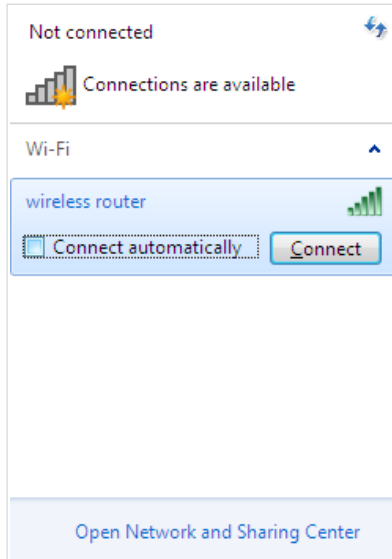
If you perform initial configuration of the router via Wi-Fi connection, note that immediately after changing the wireless default settings of the router you will need to reconfigure the wireless connection using the newly specified settings.

## Configuring Wi-Fi Adapter in OS Windows 7

1. Click the **Start** button and proceed to the **Control Panel** window.
2. Select the **Network and Sharing Center** section. (If the Control Panel has the category view (the **Category** value is selected from the **View by** drop-down list in the top right corner of the window), choose the **View network status and tasks** line under the **Network and Internet** section.)
3. In the menu located on the left part of the window, select the **Change adapter settings** line.
4. In the opened window, select the icon of the wireless network connection and make sure that your Wi-Fi adapter is on.
5. To open the list of available wireless networks, select the icon of the wireless network connection and click the **Connect To** button or left-click the network icon in the notification area located on the right side of the taskbar.



- In the opened window, in the list of available wireless networks, select the wireless network **DIR-878** (for operating in the 2.4GHz band) or **DIR-878-5G** (for operating in the 5GHz band) and click the **Connect** button.



- In the opened window, enter the network key (see WPS PIN on the barcode label on the bottom panel of the device) in the **Security key** field and click the **OK** button.
- Wait for about 20-30 seconds. After the connection is established, the network icon will be displayed as the signal level scale.



If you perform initial configuration of the router via Wi-Fi connection, note that immediately after changing the wireless default settings of the router you will need to reconfigure the wireless connection using the newly specified settings.

# CONFIGURING ROUTER

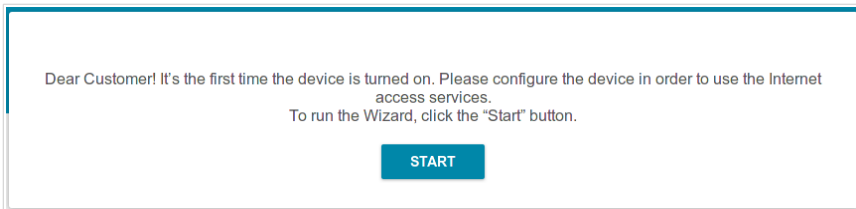
## Connecting to Web-based Interface

Start a web browser. In the address bar of the web browser, enter the IP address of the router (by default, **192.168.0.1**) or its domain name (by default, **dlinkrouter.local**) with a dot at the end. Press the **Enter** key.

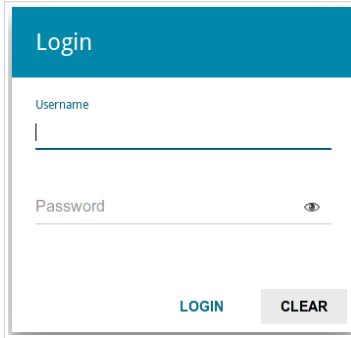


**!** If the error “*The page cannot be displayed*” (or “*Unable to display the page*”/“*Could not connect to remote server*”) occurs upon connecting to the web-based interface of the router, make sure that you have properly connected the router to your computer.

If the device has not been configured previously or the default settings have been restored, after access to the web-based interface the Initial Configuration Wizard opens (see the **Initial Configuration Wizard** section, page 18).



If you configured the device previously, after access to the web-based interface the login page opens. Enter the username (**admin**) in the **Username** field and the password you specified in the **Password** field, then click the **LOGIN** button.



The screenshot shows a login form with a teal header containing the word "Login". Below the header, there are two input fields: "Username" and "Password". The "Username" field has a vertical cursor at the beginning. The "Password" field has a small eye icon to its right, indicating a toggle for password visibility. At the bottom of the form, there are two buttons: "LOGIN" and "CLEAR".

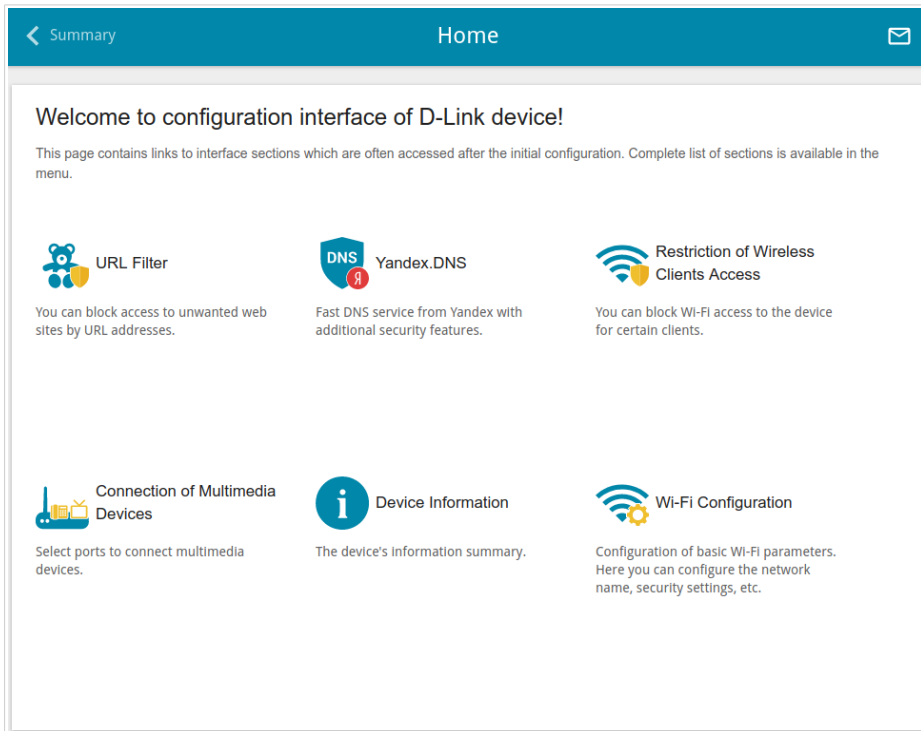
The **Summary** page displays general information on the router and its software.

The screenshot shows the 'Summary' page of the DIR-878 router. The page is organized into several sections:

- Device Information:**
  - Model: DIR-878
  - Hardware revision: A1
  - Firmware version: 3.5.0
  - Build time: Fri Oct 27 17:30:15 MSK 2017
  - Vendor: D-Link Russia
  - Support: [support@dlink.ru](mailto:support@dlink.ru)
  - Summary: Root filesystem image for DIR-878
  - Uptime: 0 days 02:35:36
  - Device mode: [Router](#)
- WAN IPv4:**
  - Connection type: Dynamic IPv4
  - Status: Cable disconnected
- LAN:**
  - LAN IPv4: 192.168.0.1
  - LAN IPv6: fd01::1/64
  - Wireless connections: 1
  - Wired connections: 1
- Wi-Fi 2.4 GHz:**
  - Status: On
  - Broadcasting: On
  - Additional networks count: 0
  - Network name (SSID): DIR-878-1314
  - Security: WPA2-PSK
- LAN Ports:**
  - LAN1:
  - LAN2: Off
  - LAN3: Off
  - LAN4: Off
- Wi-Fi 5 GHz:**
  - Status: On
  - Broadcasting: On
  - Additional networks count: 0
  - Network name (SSID): DIR-878-5G-1314
  - Security: WPA2-PSK
- Yandex.DNS:**
  - Yandex  Enable
  - Safe: 2 devices
  - Child: 0 devices
  - Protection off: 0 devices



The **Home** page displays links to the most frequently used pages with device's settings.

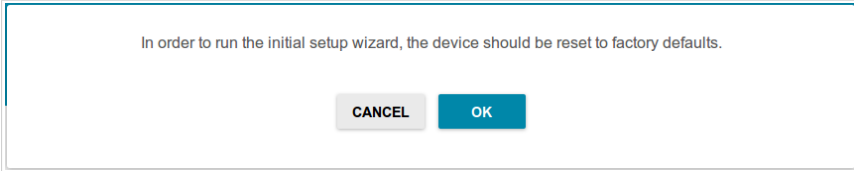


The web-based interface of the router is bilingual (English/Russian). You can select the needed language upon the initial configuration of the web-based interface of the router or in the **System / Configuration** section of the menu.

Other settings of the router are available in the menu in the left part of the page. Go to the relevant section and select the needed page or run the wizard in the **Initial Configuration** section.

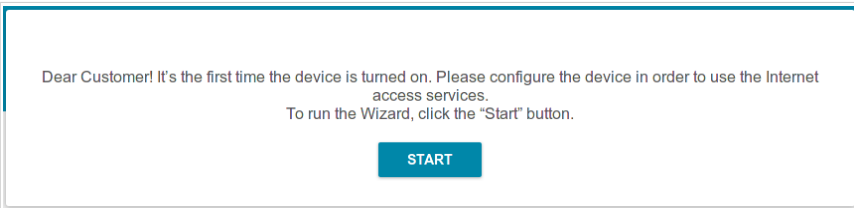
## Initial Configuration Wizard

In order to start the Initial Configuration Wizard manually, go to the **Initial Configuration** section.

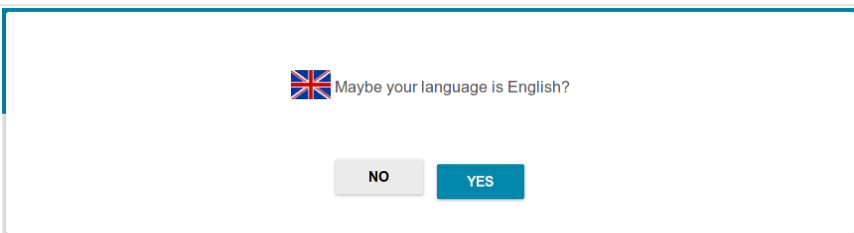


Click the **OK** button and wait until the factory default settings are restored. Then click the **START** button.

If the device has not been configured previously or the default settings have been restored, the Initial Configuration Wizard starts automatically upon access to the web-based interface or upon opening a web site on the Internet.



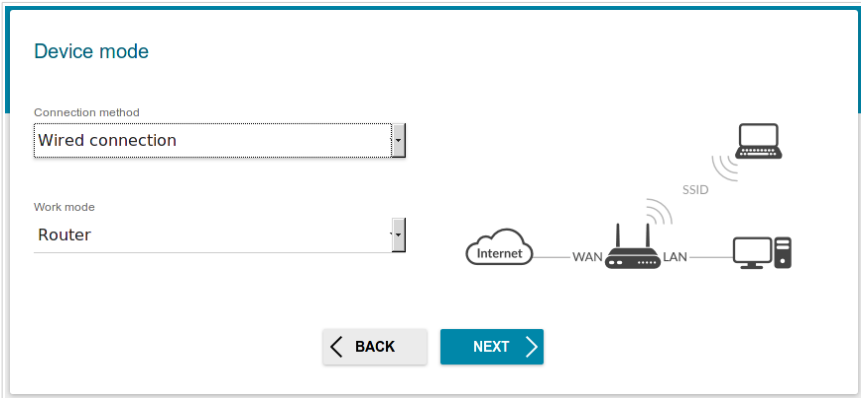
1. Click **YES** in order to leave the current language of the web-based interface or click **NO** to select the other language.



2. On the next page, click the **CONTINUE** button.

## Selecting Operation Mode

In order to connect your device to a wired ISP, on the **Device mode** page, from the **Connection method** list, select the **Wired connection** value. Then from the **Work mode** list select the **Router** value. In this mode you can configure a WAN connection, set your own settings for the wireless network in the 2.4GHz and 5GHz bands, configure LAN ports to connect an STB or VoIP phone, and set your own password for access to the web-based interface of the device.



In order to connect your device to a wireless ISP (WISP), on the **Device mode** page, from the **Connection method** list, select the **Wi-Fi** value. Then from the **Work mode** list select the **WISP Repeater** value. In this mode you can connect your device to another access point, configure a WAN connection, set your own settings for the wireless network in the 2.4GHz and 5GHz bands, configure LAN ports to connect an STB or VoIP phone, and set your own password for access to the web-based interface of the device.

In order to connect your device to a wired router for adding a wireless network to the existing local network, on the **Device mode** page, from the **Connection method** list, select the **Wired connection** value. Then from the **Work mode** list select the **Access point** value. In this mode you can change the LAN IP address, set your own settings for the wireless network in the 2.4GHz and 5GHz bands and set your own password for access to the web-based interface of the device.

In order to connect your device to a wireless router for extending the range of the existing wireless network, on the **Device mode** page, from the **Connection method** list, select the **Wi-Fi** value. Then from the **Work mode** list select the **Repeater** value. In this mode you can change the LAN IP address, connect your device to another access point, set your own settings for the wireless network in the 2.4GHz and 5GHz bands, and set your own password for access to the web-based interface of the device.

In order to let wired PCs connected to your device access the network of a wireless router, on the **Device mode** page, from the **Connection method** list, select the **Wi-Fi** value. Then from the **Work mode** list select the **Client** value. In this mode you can change the LAN IP address, connect your device to another access point and set your own password for access to the web-based interface of the device.

When the operation mode is selected, click the **NEXT** button.

## Changing LAN IPv4 Address

This configuration step is available for the **Access point**, **Repeater**, and **Client** modes.

1. Select the **Automatic obtainment of IPv4 address** to let DIR-878 automatically obtain the LAN IPv4 address.

**!** If the router obtains the LAN IPv4 address automatically, then after finishing the Wizard you can access the web-based interface using the domain name (by default, **dlinkrouter.local**) with a dot at the end.

If you want to manually assign the LAN IPv4 address for DIR-878, do not select the **Automatic obtainment of IPv4 address** checkbox and fill in the **IP address** and **Netmask** fields and, if needed, the **Gateway IP address** field. Make sure that the assigned address does not coincide with the LAN IPv4 address of the router to which your device connects.

LAN

Automatic obtainment IPv4 address

**!** Automatic obtainment of IPv4 address sufficiently protects against use of the same addresses in one LAN. In order to avoid IPv4 address conflicts, static IPv4 addresses of LAN devices should not coincide with addresses from the address range assigned by an upper-level router (or a local DHCP server).

IP address\*

192.168.0.1

Netmask\*

255.255.255.0

Gateway IP address

< BACK

NEXT >

2. Click the **NEXT** button.

## Wi-Fi Client

This configuration step is available for the **WISP Repeater**, **Repeater**, and **Client** modes.

1. On the **Wi-Fi Client** page, in the **Wireless Networks** section, select the network to which you want to connect. When you select a network, the **Network name (SSID)** and **BSSID** fields are filled in automatically.

If you cannot find the needed network in the list, click the **UPDATE LIST** button.

2. If a password is needed to connect to the selected network, fill in the relevant field.

Wi-Fi Client

Connecting to network

Select network from list

Network name (SSID)

BSSID

Wireless Networks [UPDATE LIST](#)

Network name (SSID)	Security settings	Channel
DIR-615-56788	[WPA2-PSK] [AES]	1
DIR_640L_FIREWALL	[WPA2-PSK] [AES]	1

If you connect to a hidden network, from the **Connecting to network** list select the **Connect to hidden network** value. Then select the band where the hidden network operates from the **Frequency band** list and enter the network name in the **Network name (SSID)** field. Then select a needed value from the **Network authentication** list and then, if needed, enter the password in the relevant field.

3. Click the **NEXT** button.

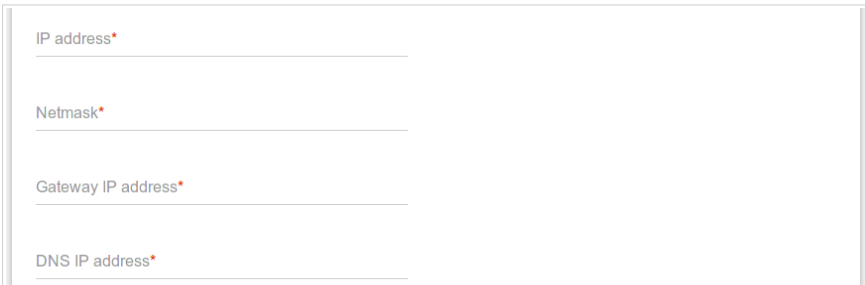
## Configuring WAN Connection

This configuration step is available for the **Router** and **WISP Repeater** modes.

**!** You should configure your WAN connection in accordance with data provided by your Internet service provider (ISP). Make sure that you have obtained all necessary information prior to configuring your connection. Otherwise contact your ISP.

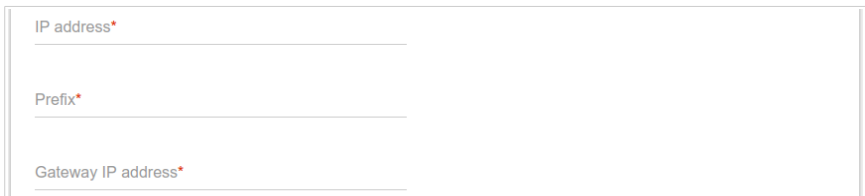
1. On the **Internet connection type** page, from the **Connection type** list, select the connection type used by your ISP and fill in the fields displayed on the page.

**Static IPv4:** Fill in the following fields: **IP address**, **Netmask**, **Gateway IP address**, and **DNS IP address**.




A screenshot of a configuration form for Static IPv4. It contains four input fields, each with a red asterisk indicating it is required. The fields are: IP address\*, Netmask\*, Gateway IP address\*, and DNS IP address\*.

**Static IPv6:** Fill in the following fields: **IP address**, **Prefix**, and **Gateway IP address**.




A screenshot of a configuration form for Static IPv6. It contains three input fields, each with a red asterisk indicating it is required. The fields are: IP address\*, Prefix\*, and Gateway IP address\*.

**PPPoE, IPv6 PPPoE, PPPoE Dual Stack, PPPoE + Dynamic IP (PPPoE Dual Access):** Enter authorization data provided by your ISP (the username (login) in the **Username** field and the password in the **Password** field). Click the **Show** icon (  ) to display the entered password. If authorization is not required, select the **Without authorization** checkbox.

Without authorization


Username\*

Password\*  

**PPPoE + Static IP (PPPoE Dual Access):** Enter authorization data provided by your ISP (the username (login) in the **Username** field and the password in the **Password** field). Click the **Show** icon (  ) to display the entered password. If authorization is not required, select the **Without authorization** checkbox. Also fill in the following fields: **IP address**, **Netmask**, **Gateway IP address**, and **DNS IP address**.

Without authorization

Username\*

Password\*  


IP address\*

Netmask\*

Gateway IP address\*


DNS IP address\*




**PPTP + Dynamic IP or L2TP + Dynamic IP:** Enter authorization data provided by your ISP (the username (login) in the **Username** field and the password in the **Password** field). Click the **Show** icon (  ) to display the entered password. If authorization is not required, select the **Without authorization** checkbox. In the **VPN server address** field, enter the IP or URL address of the PPTP or L2TP authentication server.

Without authorization

Username\*


Password\*  

VPN server address\*

**PPTP + Static IP or L2TP + Static IP:** Enter authorization data provided by your ISP (the username (login) in the **Username** field and the password in the **Password** field). Click the **Show** icon (  ) to display the entered password. If authorization is not required, select the **Without authorization** checkbox. In the **VPN server address** field, enter the IP or URL address of the PPTP or L2TP authentication server. Also fill in the following fields: **IP address**, **Netmask**, **Gateway IP address**, and **DNS IP address**.

Without authorization

Username\*

Password\*  

VPN server address\*

IP address\*

Netmask\*

Gateway IP address\*

DNS IP address\*

2. If your ISP uses MAC address binding, select the **Clone MAC address of your device** checkbox.
3. If the Internet access is provided via a VLAN channel, select the **Use VLAN** checkbox and fill in the **VLAN ID** field.

Clone MAC address of your device

*In some ISP's networks, it is required to register a certain MAC address in order to get access to the Internet.*

Use VLAN

*Select the checkbox if the Internet access is provided via a VLAN channel.*

VLAN ID\*

4. Click the **NEXT** button.

## Configuring Wireless Network

This configuration step is available for the **Router**, **Access point**, **WISP Repeater**, and **Repeater** modes.

1. On the **Wireless Network 2.4 GHz** page, in the **Network name** field, specify your own name for the wireless network in the 2.4GHz band or leave the value suggested by the router.
2. In the **Password** field, specify your own password for access to the wireless network or leave the value suggested by the router (WPS PIN of the device, see the barcode label).
3. You can restore the parameters of the wireless network specified before resetting to factory defaults. To do this, click the **RESTORE** button.

### Wireless Network 2.4 GHz

Enable

Broadcast wireless network 2.4 GHz

ⓘ Disabling broadcast does not influence the ability to connect to another Wi-Fi network as a client.

Network name\*

my wifi

Open network

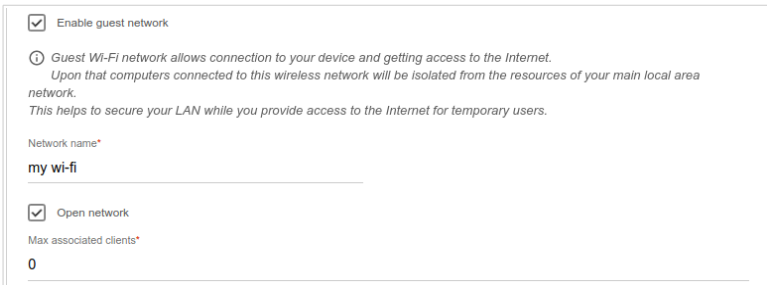
Password\*

\*\*\*\*\* 🗕


ⓘ Password should be between 8 and 63 ASCII characters

**RESTORE** You can restore network name and security that was set before applying factory settings.

- If you want to create an additional wireless network isolated from your LAN in the 2.4GHz band, select the **Enable guest network** checkbox (available for the **Router**, and **WISP Repeater** modes only).



Enable guest network

 Guest Wi-Fi network allows connection to your device and getting access to the Internet. Upon that computers connected to this wireless network will be isolated from the resources of your main local area network. This helps to secure your LAN while you provide access to the Internet for temporary users.

Network name\*

my wi-fi

Open network

Max associated clients\*

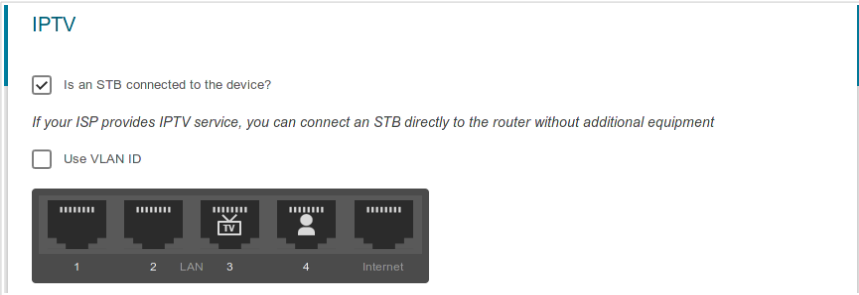
0

- In the **Network name** field, specify your own name for the guest wireless network or leave the value suggested by the router.
- If you want to create a password for access to the guest wireless network, deselect the **Open network** checkbox and fill in the **Password** field.
- Click the **NEXT** button.
- On the **Wireless Network 5 GHz** page, specify needed settings for the wireless network in the 5GHz band and click the **NEXT** button.

## Configuring LAN Ports for IPTV/VoIP

This configuration step is available for the **Router** and **WISP Repeater** modes.

1. On the **IPTV** page, select the **Is an STB connected to the device** checkbox.




**IPTV**

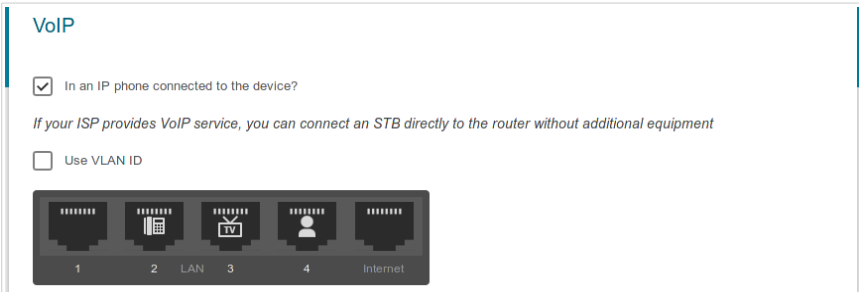
Is an STB connected to the device?

*If your ISP provides IPTV service, you can connect an STB directly to the router without additional equipment*

Use VLAN ID



2. Select a free LAN port for connecting your set-top box.
3. If the IPTV service is provided via a VLAN channel, select the **Use VLAN ID** checkbox and fill in the **VLAN ID** field.
4. Click the **NEXT** button.
5. On the **VoIP** page, select the **In an IP phone connected to the device** checkbox.




**VoIP**

In an IP phone connected to the device?

*If your ISP provides VoIP service, you can connect an STB directly to the router without additional equipment*

Use VLAN ID



6. Select a free LAN port for connecting your IP phone.
7. If the VoIP service is provided via a VLAN channel, select the **Use VLAN ID** checkbox and fill in the **VLAN ID** field.
8. Click the **NEXT** button.

## Changing Web-based Interface Password

On this page you should change the default administrator password. You may set any password except **admin**. Use digits, Latin letters (uppercase and/or lowercase), and other characters available in the US keyboard layout.<sup>1</sup>

**!** Remember or write down the new password for the administrator account. In case of losing the new password, you can access the settings of the router only after restoring the factory default settings via the hardware **RESET** button. This procedure wipes out all settings that you have configured for your router.

Click the **NEXT** button.

On the next page, check all the settings you have just specified.

Also you can save a text file with parameters set by the Wizard to your PC. To do this, click the **SAVE CONFIGURATION FILE** button and follow the dialog box appeared.

To finish the Wizard, click the **APPLY** button. The router will apply settings, reboot, if needed, and check the Internet connection if the Wizard has configured a WAN connection.

<sup>1</sup> 0-9, A-Z, a-z, space, !"#%&'()\*+,-./:;<=>?@[\\]^\_`{|}~.

## Configuring Local Area Network

1. Go to the **Connections Setup / LAN** page.
2. If needed, change the IPv4 address of the router's LAN interface and the mask of the local subnet. To do this, click the **IPv4** tab and specify needed values in the **IP address** and **Subnet mask** fields in the **Local IP Address** section.

Local IP Address

IP address\*  
192.168.0.1

Subnet mask\*  
255.255.255.0

Device domain name  
dlinkrouter.local

3. If needed, specify your own IPv6 address of the router's LAN interface. To do this, click the **IPv6** tab and select the **Static** value from the **Mode of local IPv6 address assignment** drop-down list in the **Local IPv6 Address** section. Then specify the needed value in the **IPv6 address** field.

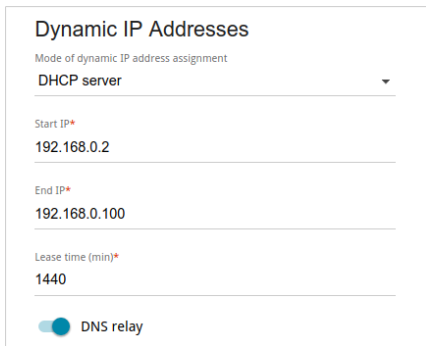
Local IPv6 Address

Mode of local IPv6 address assignment  
Prefix delegation

IPv6 address  
fd01::1

Prefix  
64

4. **IPv4 address assignment.** By default, the built-in DHCP server of the router assigns IPv4 addresses to the devices of the LAN. If you want to manually assign IPv4 addresses, disable the DHCP server (click the **IPv4** tab and select the **Disable** value from the **Mode of dynamic IP address assignment** drop-down list in the **Dynamic IP Addresses** section).



Dynamic IP Addresses

Mode of dynamic IP address assignment  
DHCP server

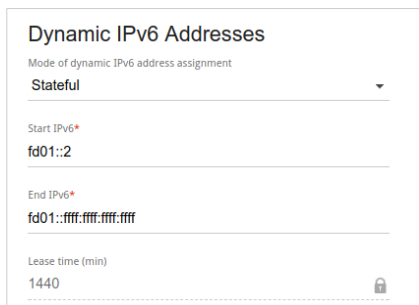
Start IP\*  
192.168.0.2

End IP\*  
192.168.0.100

Lease time (min)\*  
1440

DNS relay

5. **IPv6 address assignment.** By default, the devices of the LAN automatically assign IPv6 addresses to themselves (the **Stateless** value is selected from the **Mode of dynamic IPv6 address assignment** drop-down list in the **Dynamic IPv6 Addresses** section on the **IPv6** tab). If the devices of the LAN do not support IPv6 address autoconfiguration, enable the built-in DHCPv6 server of the router (select the **Stateful** value from the **Mode of dynamic IPv6 address assignment** drop-down list). If you want to manually assign IPv6 addresses to devices of the LAN, select the **Disable** value from the **Mode of dynamic IPv6 address assignment** drop-down list.



Dynamic IPv6 Addresses

Mode of dynamic IPv6 address assignment  
Stateful

Start IPv6\*  
fd01::2

End IPv6\*  
fd01::ffff:ffff:ffff

Lease time (min)  
1440



6. After specifying the needed parameters on the **Connections Setup / LAN** page, click the **APPLY** button.

## SPECIFICATIONS\*

Hardware	
<b>Processor</b>	<ul style="list-style-type: none"> <li>· MT7621A (880MHz, dual core)</li> </ul>
<b>RAM</b>	<ul style="list-style-type: none"> <li>· 128MB, DDR3</li> </ul>
<b>Flash</b>	<ul style="list-style-type: none"> <li>· 16MB, SPI</li> </ul>
<b>Interfaces</b>	<ul style="list-style-type: none"> <li>· 10/100/1000BASE-T WAN port</li> <li>· 4 10/100/1000BASE-T LAN ports</li> </ul>
<b>LEDs</b>	<ul style="list-style-type: none"> <li>· POWER</li> <li>· INTERNET</li> <li>· WLAN 2.4G</li> <li>· WLAN 5G</li> </ul>
<b>Buttons</b>	<ul style="list-style-type: none"> <li>· POWER button to power on/power off</li> <li>· WiFi button to enable/disable wireless network</li> <li>· WPS button to set up wireless connection</li> <li>· RESET button to restore factory default settings</li> </ul>
<b>Antenna</b>	<ul style="list-style-type: none"> <li>· Four external non-detachable antennas 5dBi gain</li> </ul>
<b>MIMO</b>	<ul style="list-style-type: none"> <li>· 3 x 3</li> </ul>
<b>Power connector</b>	<ul style="list-style-type: none"> <li>· Power input connector (DC)</li> </ul>

Software	
<b>WAN connection types</b>	<ul style="list-style-type: none"> <li>· PPPoE</li> <li>· IPv6 PPPoE</li> <li>· PPPoE Dual Stack</li> <li>· Static IPv4 / Dynamic IPv4</li> <li>· Static IPv6 / Dynamic IPv6</li> <li>· PPPoE + Static IP (PPPoE Dual Access)</li> <li>· PPPoE + Dynamic IP (PPPoE Dual Access)</li> <li>· PPTP/L2TP + Static IP</li> <li>· PPTP/L2TP + Dynamic IP</li> </ul>

\* The device features are subject to change without notice. For the latest versions of the firmware and relevant documentation, visit [www.dlink.ru](http://www.dlink.ru).

<b>Software</b>	
<b>Network functions</b>	<ul style="list-style-type: none"> <li>· Support of IEEE 802.1X for Internet connection</li> <li>· DHCP server/relay</li> <li>· Stateful/Stateless mode for IPv6 address assignment, IPv6 prefix delegation</li> <li>· Automatic obtainment of LAN IP address (for access point/repeater/client modes)</li> <li>· DNS relay</li> <li>· Dynamic DNS</li> <li>· Static IP routing</li> <li>· Static IPv6 routing</li> <li>· IGMP Proxy</li> <li>· RIP</li> <li>· Support of UPnP IGD</li> <li>· Support of VLAN</li> <li>· WAN ping respond</li> <li>· Support of SIP ALG</li> <li>· Support of RTSP</li> <li>· WAN reservation</li> <li>· Built-in UDPXY application</li> </ul>
<b>Firewall functions</b>	<ul style="list-style-type: none"> <li>· Network Address Translation (NAT)</li> <li>· Stateful Packet Inspection (SPI)</li> <li>· IP filter</li> <li>· IPv6 filter</li> <li>· MAC filter</li> <li>· URL filter</li> <li>· DMZ</li> <li>· Prevention of ARP and DDoS attacks</li> <li>· Virtual servers</li> <li>· Built-in Yandex.DNS web content filtering service</li> <li>· Built-in SafeDNS web content filtering service</li> </ul>
<b>VPN</b>	<ul style="list-style-type: none"> <li>· IPsec/PPTP/L2TP/PPPoE pass-through</li> <li>· IPsec tunnels</li> </ul>

<b>Software</b>	
<b>Management</b>	<ul style="list-style-type: none"> <li>· Local and remote access to settings through TELNET/WEB (HTTP/HTTPS)</li> <li>· Bilingual web-based interface for configuration and management (Russian/English)</li> <li>· Support of Click'n'Connect application for Android smartphones</li> <li>· Notification on connection problems and auto redirect to settings</li> <li>· Firmware update via web-based interface</li> <li>· Automatic notification on new firmware version</li> <li>· Saving/restoring configuration to/from file</li> <li>· Support of logging to remote host</li> <li>· Automatic synchronization of system time with NTP server and manual time/date setup</li> <li>· Ping utility</li> <li>· Traceroute utility</li> <li>· TR-069 client</li> </ul>

<b>Wireless Module Parameters</b>	
<b>Standards</b>	<ul style="list-style-type: none"> <li>· IEEE 802.11a/n/ac</li> <li>· IEEE 802.11b/g/n</li> </ul>
<b>Frequency range</b>	<ul style="list-style-type: none"> <li>· 2400 ~ 2483.5MHz</li> <li>· 5150 ~ 5350MHz</li> <li>· 5650 ~ 5725MHz</li> </ul>
<b>Wireless connection security</b>	<ul style="list-style-type: none"> <li>· WEP</li> <li>· WPA/WPA2 (Personal/Enterprise)</li> <li>· MAC filter</li> <li>· WPS (PBC/PIN)</li> </ul>
<b>Advanced functions</b>	<ul style="list-style-type: none"> <li>· Support of client mode</li> <li>· WMM (Wi-Fi QoS)</li> <li>· Information on connected Wi-Fi clients</li> <li>· Advanced settings</li> <li>· Smart adjustment of Wi-Fi clients</li> <li>· Guest Wi-Fi / support of MBSSID</li> <li>· Periodic scan of channels, automatic switch to least loaded channel</li> <li>· Support of 802.11ac (5GHz) and 802.11n (2.4GHz) TX Beamforming</li> </ul>

<b>Wireless Module Parameters</b>	
<b>Wireless connection rate<sup>2</sup></b>	<ul style="list-style-type: none"> <li>• IEEE 802.11a: 6, 9, 12, 18, 24, 36, 48, and 54Mbps</li> <li>• IEEE 802.11b: 1, 2, 5.5, and 11Mbps</li> <li>• IEEE 802.11g: 6, 9, 12, 18, 24, 36, 48, and 54Mbps</li> <li>• IEEE 802.11n (2.4GHz): 6.5–450Mbps (MCS0–MCS23) to 600Mbps (QAM256)</li> <li>• IEEE 802.11n (5GHz): from 6.5 to 450Mbps (from MCS0 to MCS23)</li> <li>• IEEE 802.11ac (5GHz): from 6.5 to 1300Mbps (from MCS0 to MSC9)</li> </ul>
<b>Transmitter output power</b>  <i>The maximum value of the transmitter output power depends upon the radio frequency regulations applied in your country</i>	<ul style="list-style-type: none"> <li>• 802.11a (typical at room temperature 25 °C) 15dBm at 6, 54Mbps</li> <li>• 802.11b (typical at room temperature 25 °C) 15dBm at 1, 11Mbps</li> <li>• 802.11g (typical at room temperature 25 °C) 15dBm at 6, 54Mbps</li> <li>• 802.11n (typical at room temperature 25 °C) 2.4GHz 15dBm at MCS0, 7 5GHz 15dBm at MCS0, 7</li> <li>• 802.11ac (typical at room temperature 25 °C) 15dBm at MCS0, 9</li> </ul>

<sup>2</sup> Maximum wireless signal rate is derived from IEEE standard 802.11ac and 802.11n specifications. In order to get the rate of 600Mbps in the 2.4GHz band, a Wi-Fi client should support MIMO 3x3 and QAM256 modulation scheme. Actual data throughput will vary. Network conditions and environmental factors, including volume of network traffic, building materials and construction, and network overhead, lower actual data throughput rate. Environmental factors will adversely affect wireless signal range.

<b>Wireless Module Parameters</b>	
<b>Receiver sensitivity</b>	<ul style="list-style-type: none"> <li>· 802.11a -96dBm at 6Mbps -78dBm at 54Mbps</li> <li>· 802.11b -96dBm at 1Mbps -90dBm at 11Mbps</li> <li>· 802.11g -95dBm at 6Mbps -76dBm at 54Mbps</li> <li>· 802.11n 2.4GHz, HT20 -95dBm at MCS0 -76dBm at MCS7 2.4GHz, HT40 -92dBm at MCS0 -72dBm at MCS7 5GHz, HT20 -95dBm at MCS0 -76dBm at MCS7 5GHz, HT40 -93dBm at MCS0 -73dBm at MCS7</li> <li>· 802.11ac VHT20 -96dBm at MCS0 -73dBm at MCS8 VHT40 -92dBm at MCS0 -68dBm at MCS9 VHT80 -88dBm at MCS0 -64dBm at MCS9</li> </ul>
<b>Modulation schemes</b>	<ul style="list-style-type: none"> <li>· 802.11a: BPSK, QPSK, 16QAM, 64QAM with OFDM</li> <li>· 802.11b: DQPSK, DBPSK, DSSS, CCK</li> <li>· 802.11g: BPSK, QPSK, 16QAM, 64QAM with OFDM</li> <li>· 802.11n: BPSK, QPSK, 16QAM, 64QAM, 256QAM with OFDM</li> <li>· 802.11ac: BPSK, QPSK, 16QAM, 64QAM, up to 256QAM with OFDM</li> </ul>

**Physical Parameters**

<b>Dimensions (L x W x H)</b>	· 259 x 184 x 46 mm (10.8 x 7.24 x 1.81 in)
<b>Weight</b>	· 565 g (1.25 lb)

**Operating Environment**

<b>Power</b>	· Output: 12V DC, 1.5A
<b>Temperature</b>	· Operating: from 0 to 40 °C · Storage: from -20 to 65 °C
<b>Humidity</b>	· Operating: from 10% to 90% (non-condensing) · Storage: from 5% to 95% (non-condensing)

## SAFETY RULES AND CONDITIONS

Please carefully read this section before installation and connection of the device. Make sure that the power adapter and cables are not damaged. The device should be used only as intended in accordance with the documents.

The device is intended for use in dry, clean, dust-free, and well ventilated areas with normal humidity away from strong heat sources. Do not use the device outdoors or in the areas with high humidity. Do not place foreign objects on the device. Do not obstruct the ventilation openings of the device. The environmental temperature near the device and the temperature inside the device's cover should be within the range from 0 °C to +40 °C.

Only use the power adapter supplied with the device. Do not plug in the adapter, if its case or cable are damaged. Plug the adapter only into working electrical outlets with parameters indicated on the adapter.

Do not open the cover of the device! Unplug the device before dusting and cleaning. Use a damp cloth to clean the device. Do not use liquid/aerosol cleaners or magnetic/static cleaning devices. Prevent moisture getting into the device or the power adapter.

The service life of the device is 2 years.



## TECHNICAL SUPPORT

You can find software updates and user documentation on our website.

D-Link provides its customers with free support within the product's warranty period.

Customers can contact the technical support group by phone or by e-mail/Internet.

### **FOR TELEPHONE NUMBERS AND ADDRESSES OF D-LINK OFFICES WORLDWIDE VISIT**

<http://www.dlink.com/corporate/worldwideoffices/>