

# D-Link Quick Installation Guide

For Windows XP,  
Server 2003



**DFE-530TX+**  
PCI Fast Ethernet  
Adapter

## Contents of Package

- DFE-530TX+ PCI Fast Ethernet Adapter
- Printed Quick Installation Guide
- CD with Manual and Drivers

*If any of the above items are missing, please contact your reseller.*



## Install the DFE-530TX+ Adapter

Before you start, make sure to turn off your computer and unplug the power cord.

*Note: To avoid damage caused by static electricity, make sure to properly ground yourself by first touching a metal part of your computer to discharge any static electricity before working with the DFE-530TX+ PCI Fast Ethernet Adapter.*



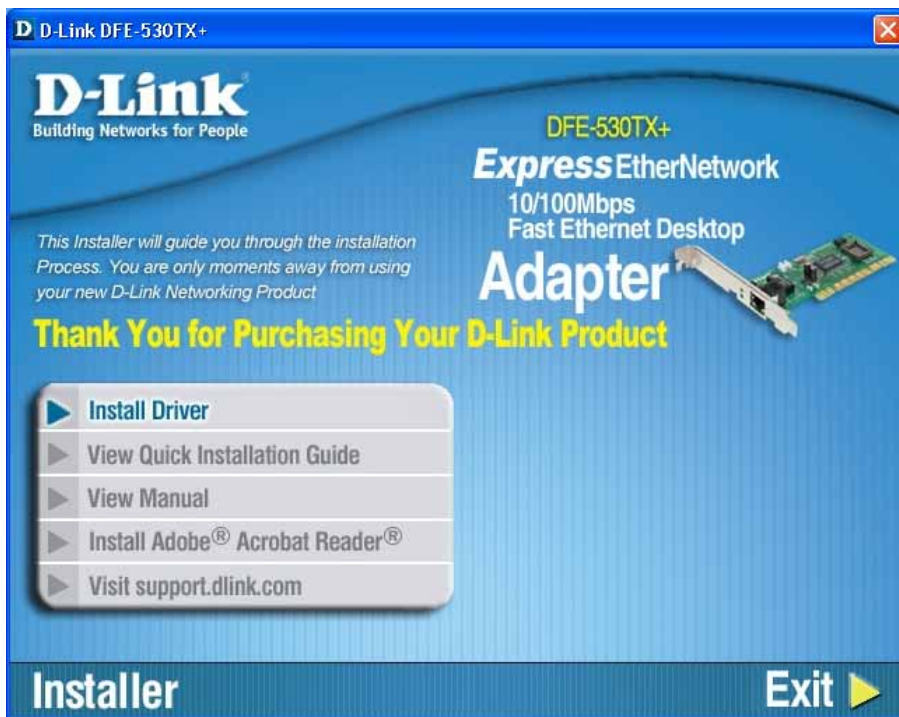
- Remove the back cover of the computer.
- Install the DFE-530TX+ carefully and firmly into an available PCI slot which is usually "white" or "cream" colored
- Secure the DFE-530TX+ with a screw.
- Replace the computer's cover.

## 2

## Install the DFE-530TX+ Driver

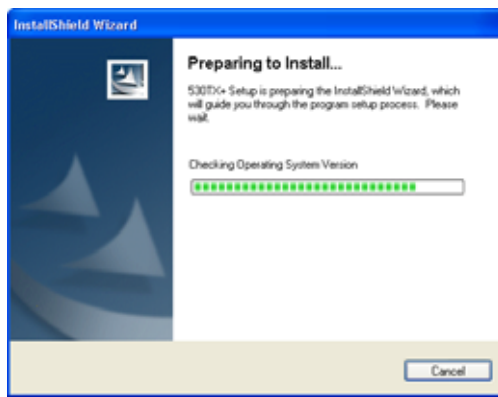
- Turn on the computer.
- Insert the driver CD, which is included with the DFE-530TX+, into the CD-ROM drive.

The following window will open automatically:

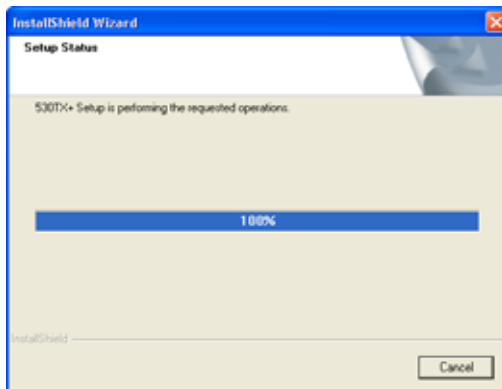


Click the first item, **Install Driver**.

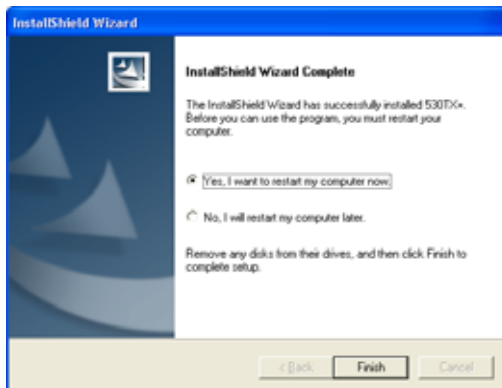
The following initial **Install Shield Wizard** window will open:



The following second **Install Shield Wizard** window will open:



The following final **Install Shield Wizard** window will open:



Select the “Yes, I want to restart my computer now” radio button and then click **Finish**.

# D-Link Quick Installation Guide

For Windows 98,  
ME, 2000



**DFE-530TX+**  
PCI Fast Ethernet  
Adapter

## Contents of Package

- DFE-530TX+ PCI Fast Ethernet Adapter
- Printed Quick Installation Guide
- CD with Manual and Drivers

*If any of the above items are missing, please contact your reseller.*



**DO NOT insert the DFE-530TX+ into the computer's PCI slot before installing the drivers.**

## Pre-installation Procedures:

If you have already installed the DFE-530TX+ into a PCI slot, advanced users may utilize the "Add New Hardware Wizard" to manually specify the location of the driver on the CD-ROM.

**Otherwise, we strongly recommend canceling the "Add New Hardware Wizard" and instead using the "Install Drivers" program in the CD-ROM.**

Here is quick summary of the proper installation procedure:

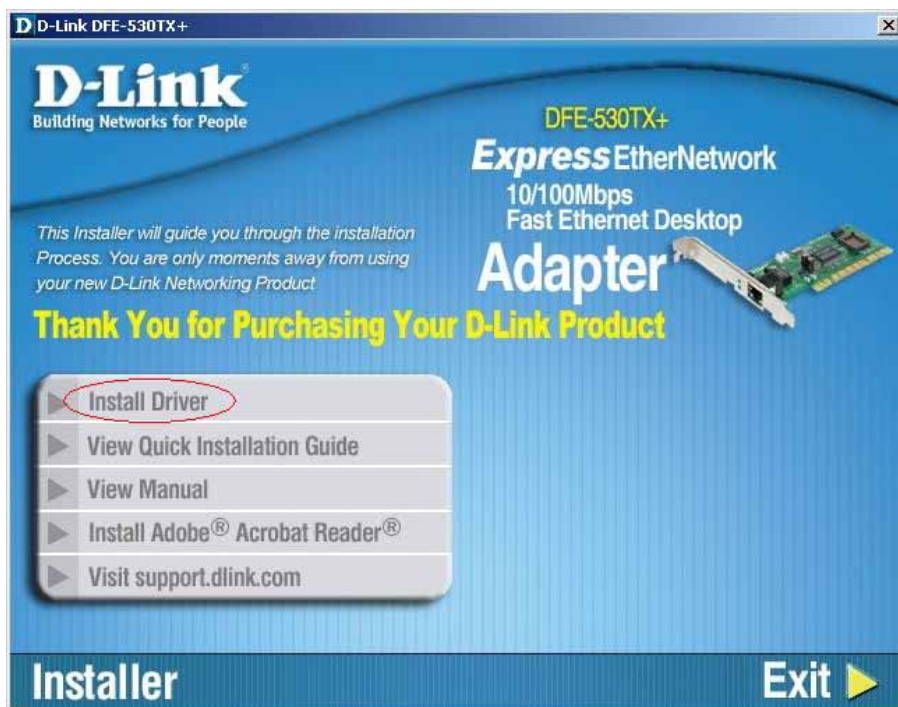
- Run the driver installation from the DFE-530TX+ CD-ROM.
- Turn off the computer and install the DFE-530TX+ into the PCI slot.
- Restart the computer to complete the installation.

# 1

## Install the DFE-530TX+ Driver

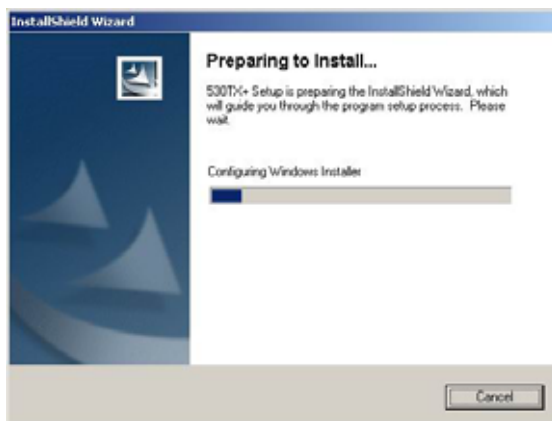
- Turn on the computer.
- Insert the driver CD, which is included with the DFE-530TX+, into the CD-ROM drive.

The following window will open:

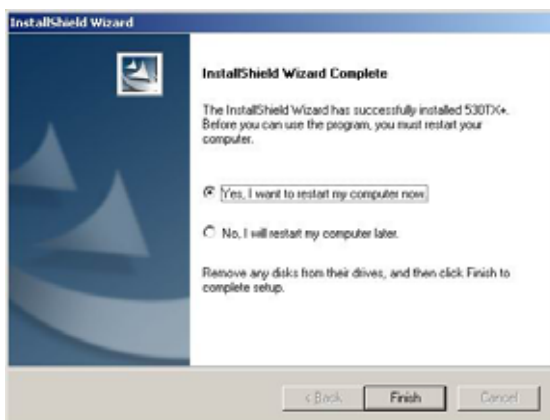


Click the first item, **Install Driver**.

The following initial **Install Shield Wizard** window will open:



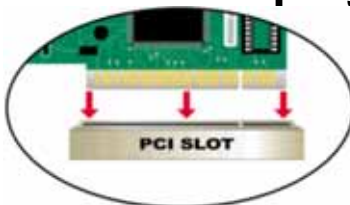
The following final **Install Shield Wizard** window will open:



Select the “Yes, I want to restart my computer now” radio button and then click **Finish**.



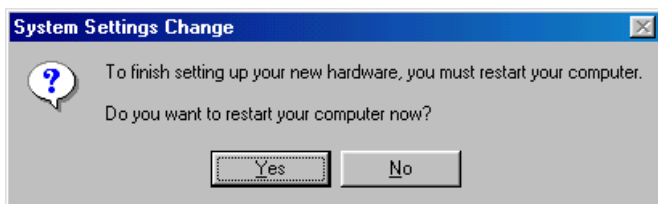
## Turn off PC and Unplug the Power



**Note:** To avoid static electric charges, please touch an unpainted screw on the outside of the power supply before installing or working with the DFE-530TX+.

- Turn off your computer and unplug the power cord.
- Remove the back cover of your computer. (Refer to your computer's manual if needed.)
- Locate an available PCI slot. PCI slots are usually white or cream colored.
- Remove the backplate (the small piece of metal that covers the opening for the PCI card on the back cover that you just removed.)
- Insert the DFE-530TX+ carefully and firmly into the PCI slot.
- Secure the DFE-530TX+ with the screw from the backplate.
- Replace your computer's cover.
- Turn on the computer.

For **Windows 2000/98/98SE** and **Windows ME** users, the following dialog box will appear.



Click **Yes** to restart the computer.

## 3

## Double-Check Your Settings

- Go to **Start>Run**.
- Type "winipcfg." (In Windows 2000, type "ipconfig/all.") In some cases it may be necessary to "Release and Renew" the IP address. Make sure to select the DFE-530TX+ as the specified adapter in the pull-down menu.
- If the IP address belongs to the same IP range and subnet mask as the local network, then open the web browser and test the Internet connection.

# D-Link Quick Installation Guide

For Macintosh 8.0  
or higher



**DFE-530TX+**  
PCI Fast Ethernet  
Adapter

## Contents of Package

- DFE-530TX+ PCI Fast Ethernet Adapter
- Printed Quick Installation Guide
- CD with Manual and Drivers

*If any of the above items are missing, please contact your reseller.*

## Requirements:

- PowerPC-based Macintosh with free PCI slot
- Operating System 8.0 or higher

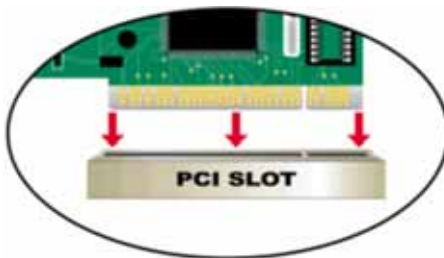
## Installation Procedure:

1. Install the DFE-530TX+ Adapter
2. Install the Driver
3. Configure Network Services



## Install the DFE-530TX+ Adapter into the Macintosh's PCI Slot

- Turn off the Macintosh
- Insert the DFE-530TX+ into an available PCI slot





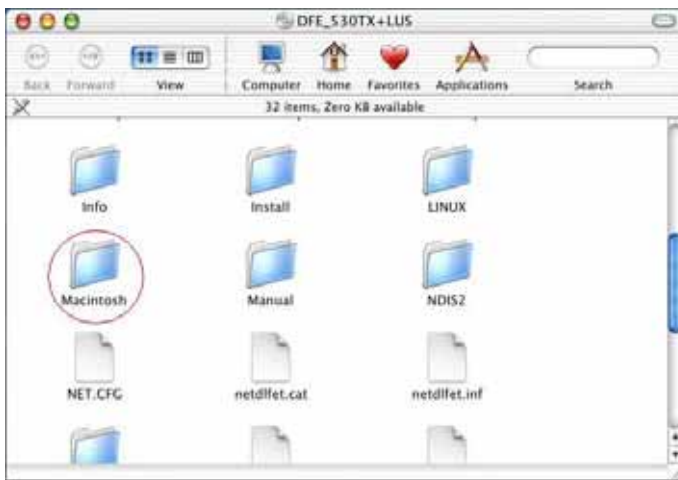
## 2

## Install the DFE-530TX+ Driver

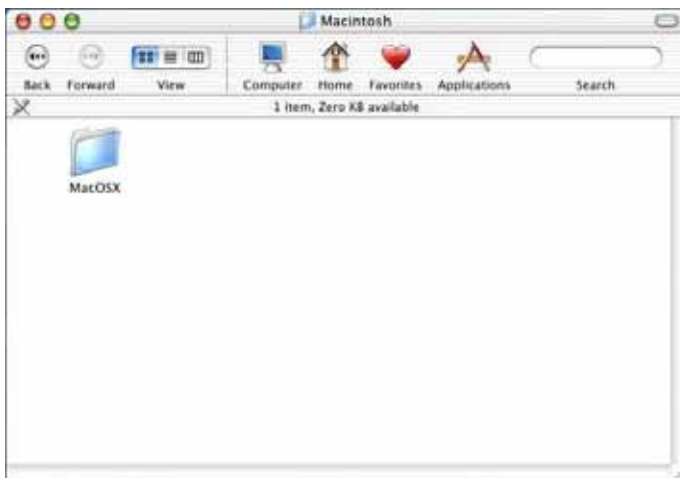
- Turn on the Macintosh
- Insert the CD-ROM into the Macintosh's CD-ROM drive



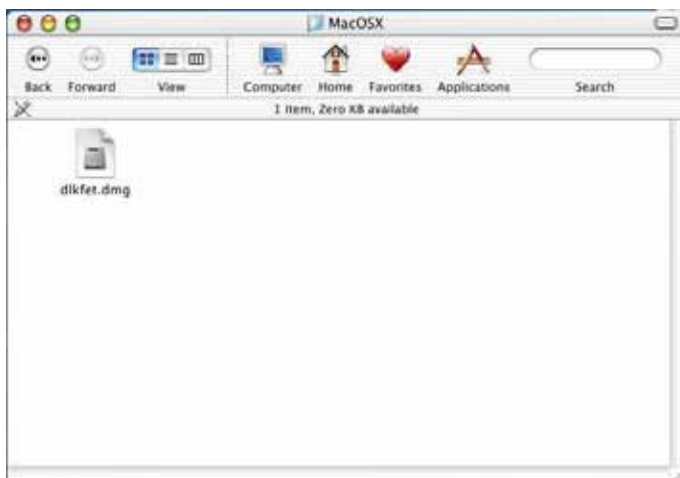
Double-click the **DFE\_530TX+LUS** icon that appears on the desktop.



Double-click the **Macintosh** folder.



Double-click the **MacOSX** folder.



Double-click **dlkfet.dmg** to place a **dlkfet** icon on the desktop.



Double-click the **dikfet** icon below to access the **dikfet** window.



Double-click the **dikfet.pkg** icon to access the driver installation program.

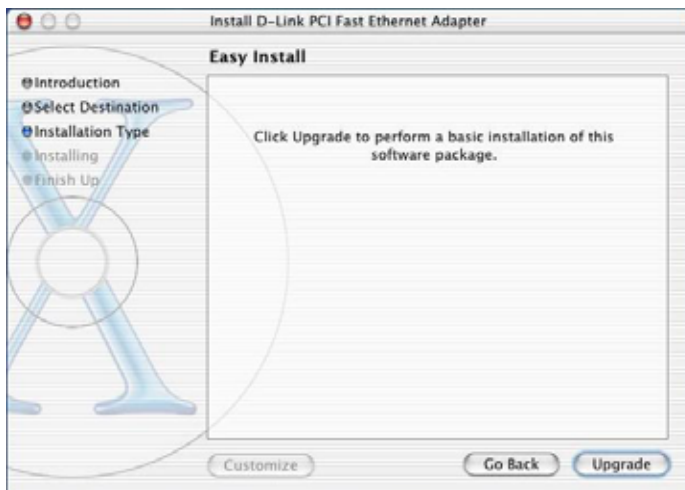


Click the **Continue** button.

Select the appropriate destination disk.



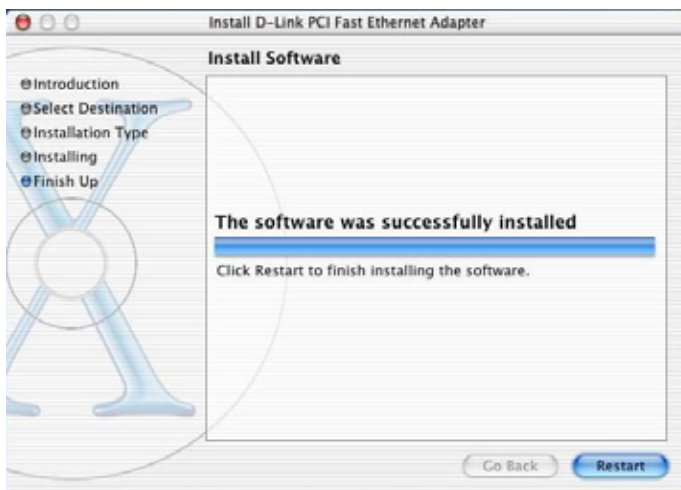
Click the **Continue** button.



Click the **Upgrade** button.



Click the **Continue Installation** button.



Click the **Restart** button to complete the software installation.

### 3

## Configure Network Services

Depending on which version of Mac OS you are using, you will probably need to configure networking services before you can start using the DFE-530TX+ Adapter. Please consult your Macintosh documentation for further information.

# Technical Support

D-Link's website contains the latest user documentation and software updates for D-Link products.

D-Link provides free technical support for customers within the United States and Canada for the duration of the product's warranty period.

U.S. and Canadian customers can contact D-Link Technical Support through our website, or by phone.

## United States

### Telephone

(877) 453-5465

**24 hours a day, 7 days a week**

### World Wide Web

<http://support.dlink.com>

### E-mail

[support@dlink.com](mailto:support@dlink.com)

## Canada

### Telephone

(800) 361-5265

Monday through Friday, 7:30am to 3:00am ET

### World Wide Web

<http://support.dlink.ca>

### E-mail

[support@dlink.ca](mailto:support@dlink.ca)

©2005 D-Link Corporation/D-Link Systems, Inc. All rights reserved. D-Link, the D-Link logo, and Securicam are trademarks or registered trademarks of

D-Link Corporation or its subsidiaries in the United States and other countries. Other trademarks are the property of their respective owners. All

references to speed are for comparison purposes only. Product

specifications, size, and shape are subject to change without notice, and actual product appearance may differ from that depicted herein. Visit

[www.dlink.com](http://www.dlink.com) for more details.

