

## Quick Installation Guide DGE-528T

Gigabit PCI Desktop Adapter

### Check Your Package Contents

---



DGE-528T



CD with Manual and Drivers

**DO NOT insert the DGE-528T into the computer's PCI slot before installing the drivers.**

### Installing the DGE-528T Drivers

---

- A.** Insert the driver CD, which is included with the DGE-528T, into the CD-ROM of your computer.
- B.** Choose the preferred language and click on "Install Drivers". When prompted "Finished", click OK. Or if prompted to reboot (under Windows ME and Windows 98 only), click Yes.

### Installing the DGE-528T into the computer's PCI slot

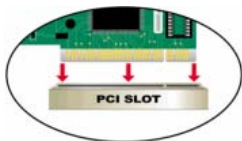
---

**Next, TURN OFF the computer and unplug the power cord.**



Caution: To avoid damage caused by static electricity, make sure to properly ground yourself by first touching a metal part of your computer to discharge any static electricity before working with the DGE-528T Ethernet Adapter.

- A.** Power off your computer and disconnect the power cord.
- B.** Remove the back cover of your computer. (Refer to your computer's manual if needed.)
- C.** Locate an available PCI slot. PCI slots are usually white or cream coloured.
- D.** Remove the back plate (the small piece of metal that covers the opening for the PCI card on the back cover that you just removed.)
- E.** Insert the DGE-528T carefully and firmly into the PCI slot.



- F. Secure the DGE-528T with the screw from the back plate.
- G. Replace your computer's cover.

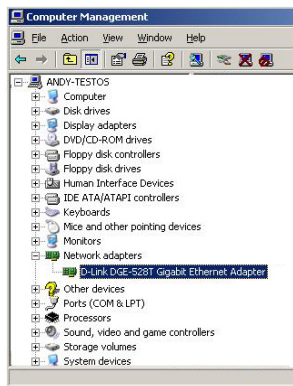
## Finishing the Installation

- A. Reconnect the power cord and power on the computer.
- B. Windows should automatically detect and install the adapter.
- C. If prompted to restart (for Microsoft Windows 98/ME only), click "Yes".

## Troubleshooting

### 1. If I've lost my CD, what can I do?

The CD contains software drivers and manual which can be obtained from D-Link (see Technical Support below). Windows 2000 or XP in most cases will automatically install the correct drivers.



### 2. What do I do if the installed card does not seem to function properly?

- Check that the card appears under START>CONTROL PANEL>SYSTEM>HARDWARE>DEVICE MANAGER>NETWORK ADAPTERS.
- If it does not appear, make sure you have inserted the PCI card correctly or try inserting the card into an alternative PCI slot.
- If it appears with an error "!" or "?", remove or uninstall the device by right clicking on the device. Restart the computer, upon restart Windows will redetect it. If error persists, try removing the card and uninstalling the driver. Repeat the installation process.

## Technical Support

Thank you for choosing D-Link products. For further information, support and product manuals please visit the D-Link website at [www.dlink.eu](http://www.dlink.eu).