

Typical Internet Configuration for DP-692 Internet Servers

Firmware v.20 or above

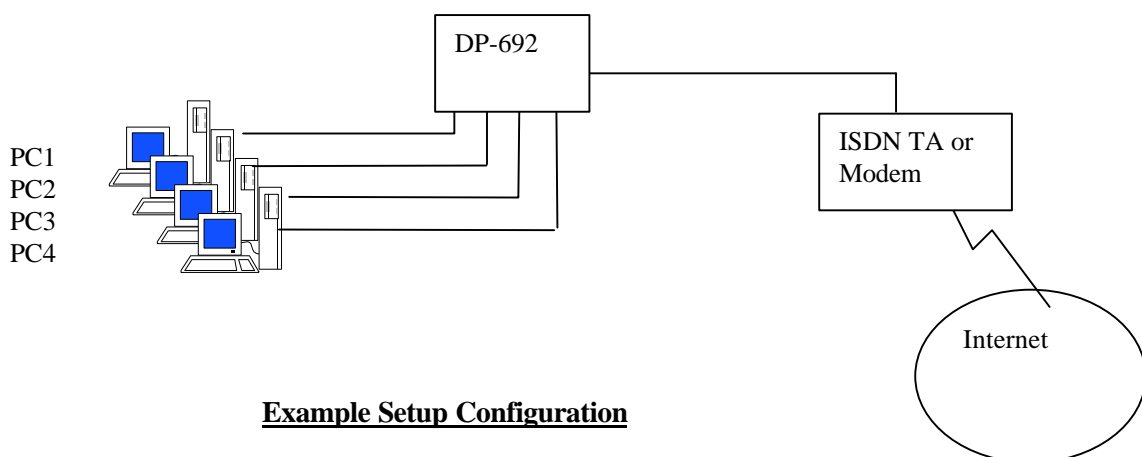
(For Single user Internet Account, with static or dynamic IP address.)

1. Introduction

This document explains how to connect to the internet using a single user account from an Internet Service Provider. The IP network is a private network and is chosen by the installer. In the example below the private IP network is 192.168.10.xxx. Your Service provider may either provide you with a static IP address or more often a dynamic IP address, that is to say the IP address is assigned to the router at connection time. A local network IP address still needs to be assigned to the router.

It is assumed the network is already configured and working in terms of network adapters and drivers installed and configured.

Fig 1.



Example Setup Configuration

DI-692	192.168.10.200
PC1	IP 192.168.10.200
PC2	IP 192.168.10.201
PC3	IP 192.168.10.202
PC4	IP 192.168.10.203
Subnet for all devices	255.255.255.0
Default Gateway (All PC's)	192.168.10.200

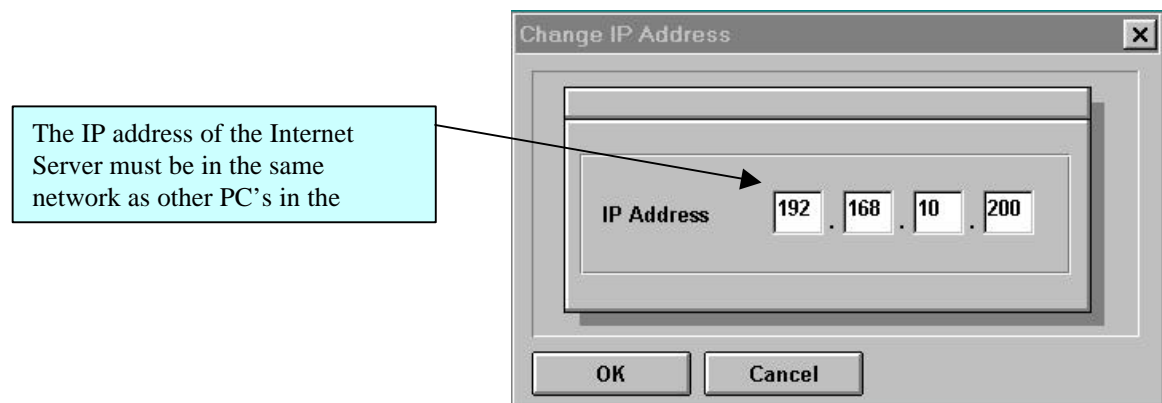
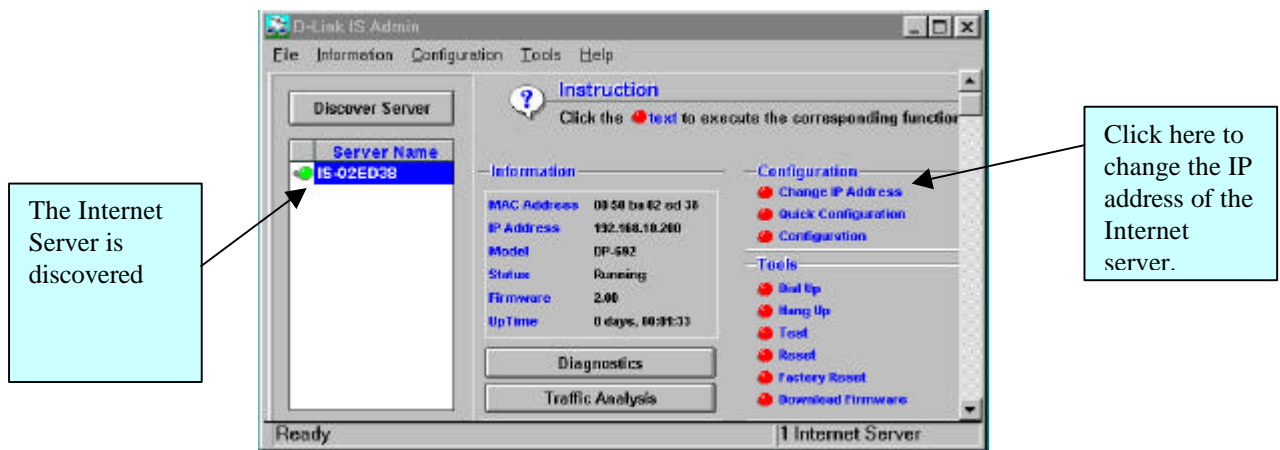
2. *Information required from the ISP.*

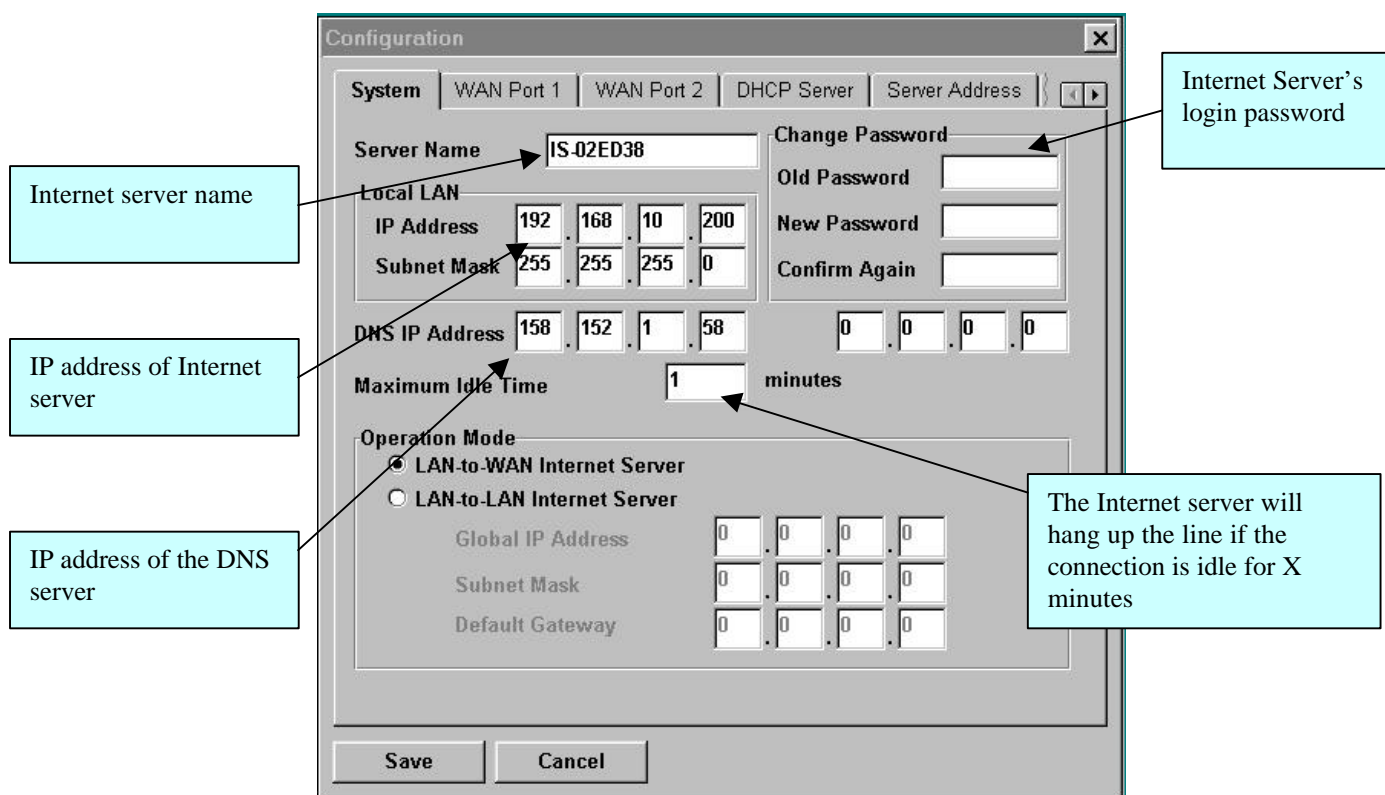
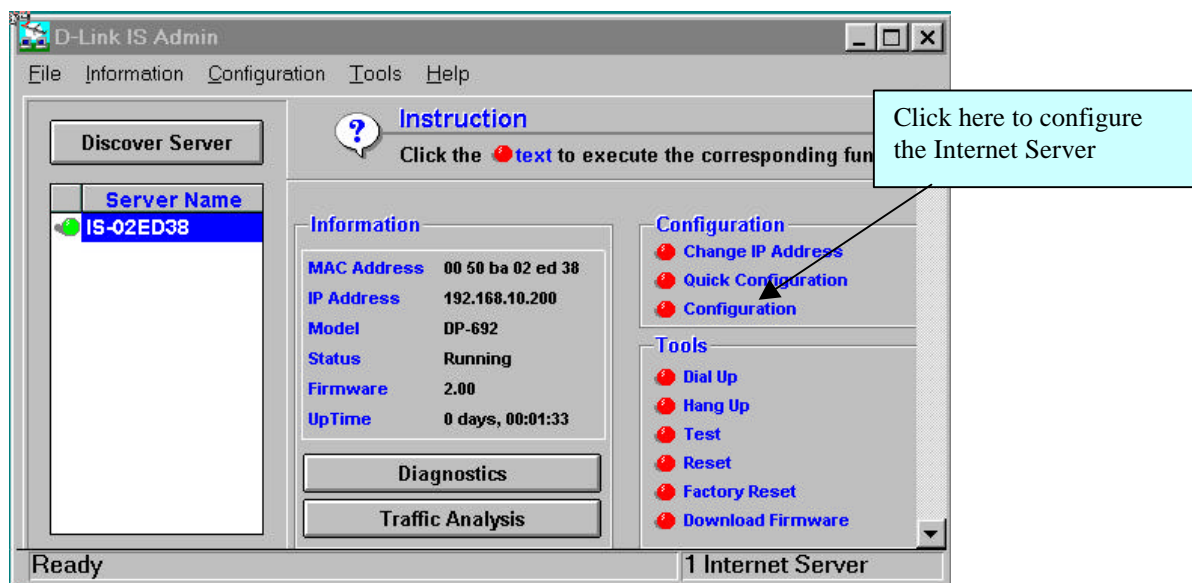
A certain amount of information is required from your ISP. See list below.

- IP address (only for static IP address connections)
- Username
- Password
- ISDN or PSTN Telephone number to dial
- DNS (consists of primary domain name controller IP, and name)

3. *DP-692 Configuration*

You must have v2.0 of the ISAdmin software installed on a Windows 95/98 or NT machine. When it's run, it will discover the DP-692 as shown below.





Configuration

System | **WAN Port 1** | WAN Port 2 | DHCP Server | Server Address

Line Type: **Dial Up**

Baud Rate: **115200** bps

ISP Account

Phone Number: **1470,08453501234**

User ID: **dlink**

Password: *********

IP Address: **0 . 0 . 0 . 0**

Modem AT Command

Init. String: **ATB40&J3**

Dial Prefix String: **ATDT**

Hangup String: **~~~~+~ATH0**

Login Script

Prompt String:

Keyin String:

Add

Insert

Delete

Save **Cancel**

ISP's Telephone number

Username and Password to ISP

Click <Browse> button to choose your modem or TA

Add in the initial string of your modem if your modem or TA is not found in the list

IP address of WAN port remains 0.0.0.0 if the ISP does not provide the fixed IP address

Add in the login script if your ISP requires one

The above steps can be repeated for the second WAN Port.

Configuration

System | WAN Port 1 | WAN Port 2 | **DHCP Server** | Server Address

☐ Disable ☒ **Enable**

IP Address Range

From: **192 . 168 . 10 . 150** To: **192 . 168 . 10 . 200**

Lease Time: **60** minutes

IP Reserve Table

IP: MAC:

Add

Delete

Save **Cancel**

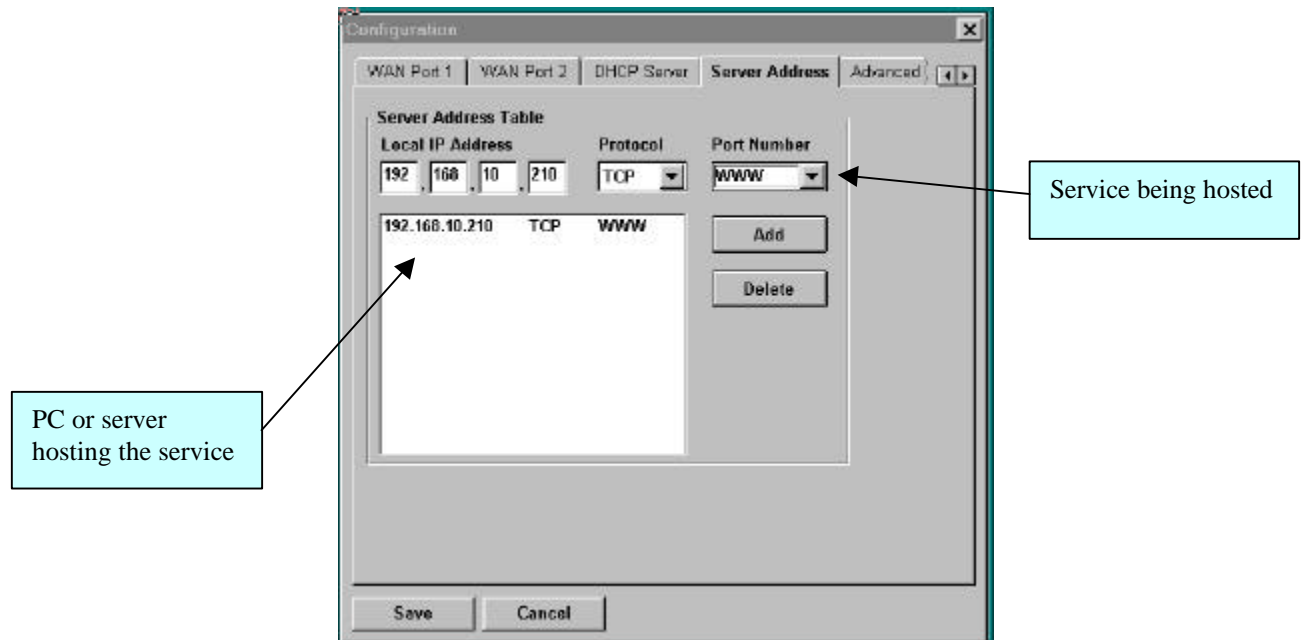
Disable if you do not want this server to be a DHCP server

IP address range for DHCP

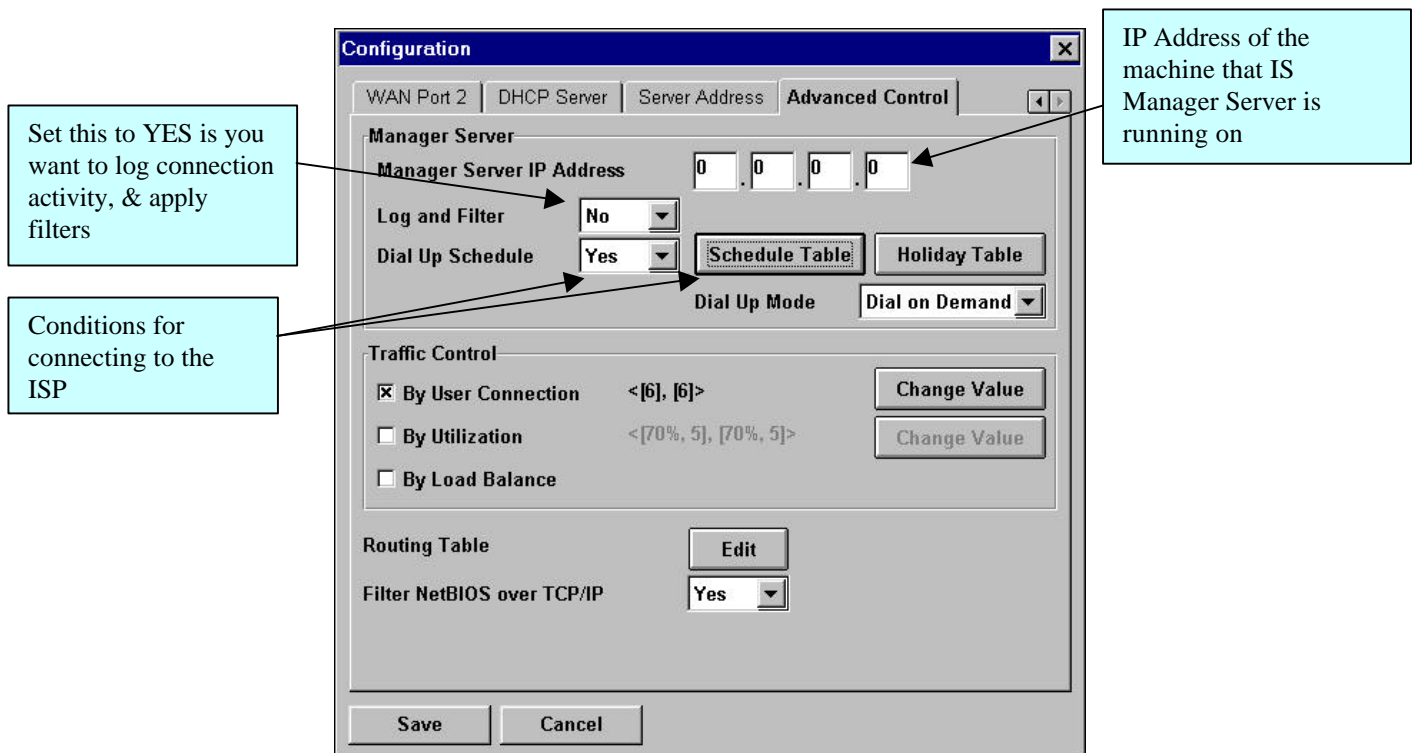
Reserve particular IP addresses for Print Servers or Computers

If NAT, (Network Address Translation), is used and you wish to install a FTP or WEB server on site. You will need to IP map those services through the Internet Server. Using the Server Address tab allows you to map these services.

In the illustration below, Internet users outside of your LAN will be able to access the WEB services installed in PC 192.168.10.210.

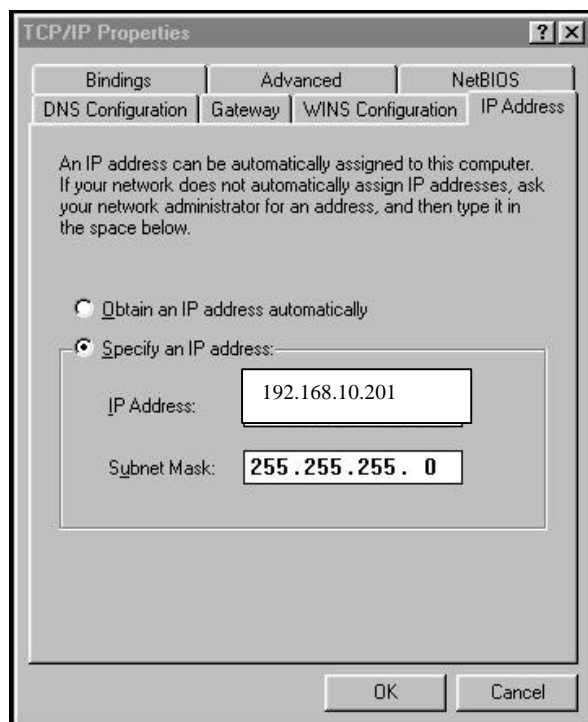


In the Advanced tab, you will find various fine tuning parameters and it also here that you can configure and control the dialler schedule.

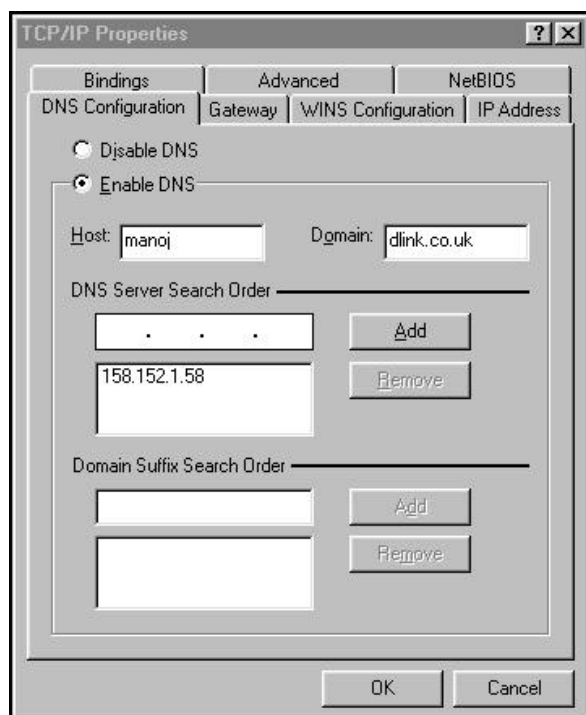


Windows 95/98 Configuration

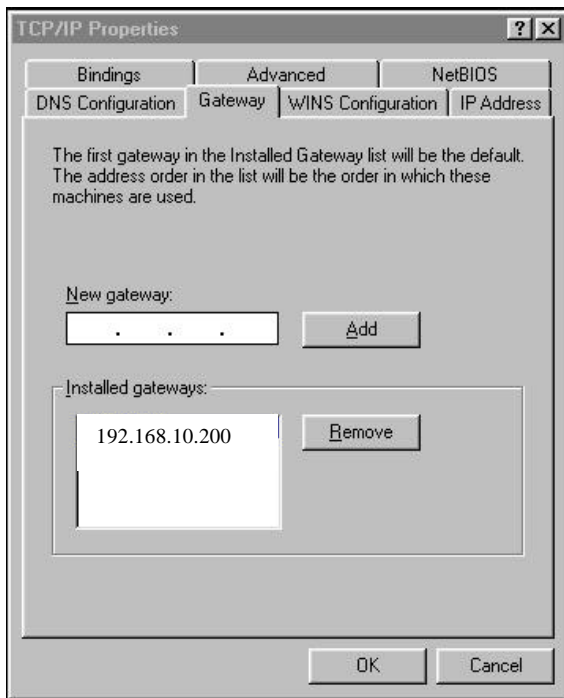
The configuration of windows 95/98 is done through the control panel. Edit the TCP/IP properties, not those bound to the dialup adapter if its installed, but those which are bound to the Ethernet adapter.



The IP address is our example
192.168.10.201 subnet mask of
255.255.255.0.



The DNS will need to be enabled and the various components need to be configured. The host name is a unique name for this computer. All of the computers in the network will have a unique name, the host name can be this name. The Domain is one of those required information provided by the ISP. For example if the ISP is demon, the Domain will be demon.co.uk. Check with the ISP if you do not have this information. Enter the DNS server IP address as shown, again provided by the ISP.



The Gateway is the IP address of the local router. In this example it is 192.168.10.200

Select the OK tab and allow windows 95/98 to load some files from the windows CD-ROM. Complete the TCP/IP configuration by rebooting when asked to do so.

When Windows has finished rebooting, select the MSDOS prompt and type **'ping 192.168.10.200'** as shown below. If the reply is as indicated, then the TCP/IP configuration is correct and working

```
C:\>ping 192.168.10.200
```

Pinging 192.168.10.200 with 32 bytes of data:

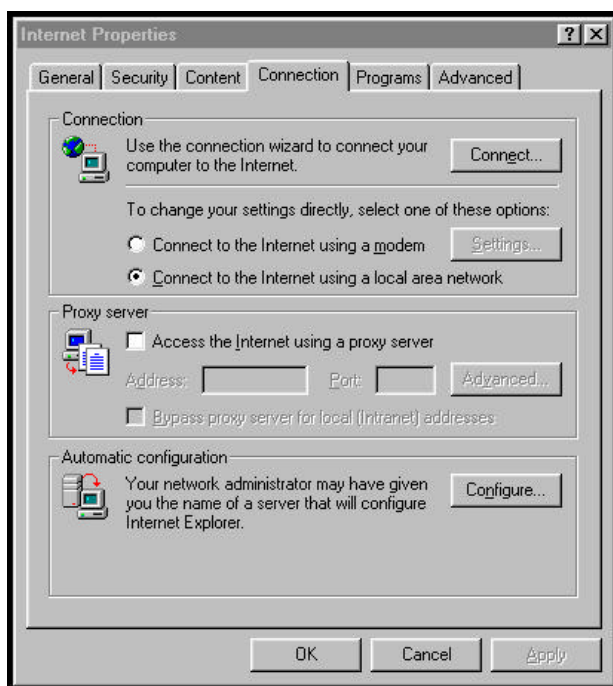
```
Reply from 192.168.10.200: bytes=32 time=1ms TTL=64
Reply from 192.168.10.200: bytes=32 time=1ms TTL=64
Reply from 192.168.10.200: bytes=32 time=1ms TTL=64
Reply from 192.168.10.200: bytes=32 time<10ms TTL=64
```

Ping statistics for 192.168.10.200:

```
Packets: Sent = 4, Received = 4, Lost = 0 (0% loss),
Approximate round trip times in milli-seconds:
Minimum = 0ms, Maximum = 1ms, Average = 0ms
```

5. *Internet Browser Settings*

The Internet browser will need to be configured to connect using the LAN rather than using the dialup adapter. The setting below is from Microsoft IE4. Another browser will have a similar setting, which can be changed to connect using LAN (local area network)



You have now completed the configuration. Launch your Internet browser and see if a connection to the required web site is established. The router will dial automatically when the browser is launched.

FAQ's

Q1. I am unable to discover the Internet Server through ISadmin?

Ans Make sure you have connected the unit to your Ethernet LAN.

Q2. I am unable to ping the Internet Server from my Windows 95/98 workstation.?

Ans Check the TCP/IP configuration of the workstation, ping the workstation IP address. If the workstation ping is successful, check the IP address of the Internet Server.

Q3. When I launch the browser, the router does not dial the ISP.

Ans Check the default gateway setting in the workstation, ensure it is the IP address of the Internet Server

~ End of Document ~