

# D-Link Quick Installation Guide

This product works with the following operating system software:

Windows XP, Windows 2000,  
Windows Me



**DNS-120**  
Express EtherNetwork™  
USB to Ethernet  
Network Storage Adapter

## Before You Begin

- You must have an Ethernet Network and a USB storage device.

The DNS-120 is DHCP enabled by default. If a DHCP server is not detected on your network, the DNS-120 will automatically configure itself with a static IP address of **192.168.0.101**. Additional IP configuration is necessary if this default IP address is not within the range of your existing network. Please refer to the page 37 of the User Manual on the CD-ROM for details.

## Check Your Package Contents



**DNS-120 Express EtherNetwork™ USB to Ethernet  
Network Storage Adapter**



**CD-ROM with Manual and Software**



**Ethernet (CAT5 UTP) Cable**



**5V 2.5A DC Power Adapter**



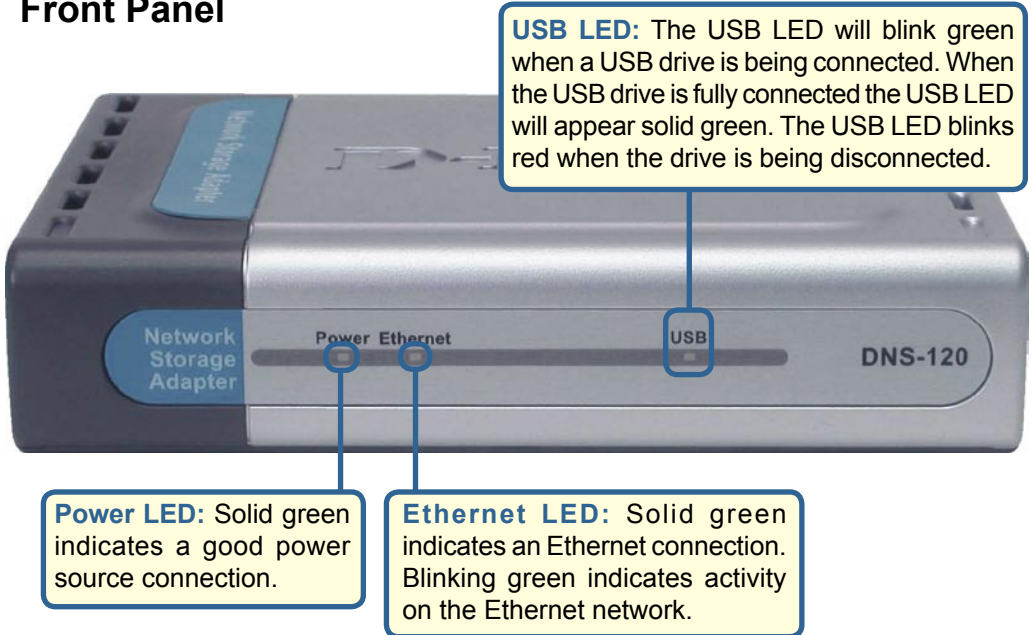
Using a power supply with a different voltage rating will damage and void the warranty of this product.

If any of the above items are missing, please contact your reseller.

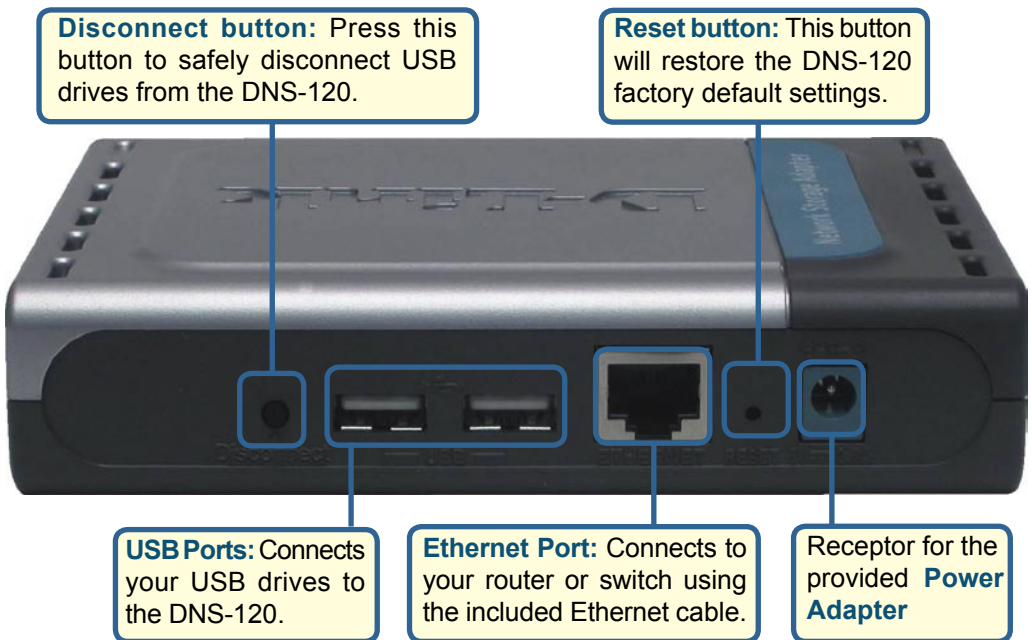
# 1

## Hardware Overview

### Front Panel



### Rear Panel



# 2

## Hardware Installation

Attach the provided Ethernet cable to the Ethernet Port on the rear panel of the DNS-120.



Attach the other end of the provided Ethernet cable to an available Ethernet port on your router or switch.



Attach the Power Adapter to the power receptor on the rear panel of the DNS-120.



Attach your USB drive(s) to the USB port(s) on the rear panel of the DNS-120.



# 3 Configuring the DNS-120

Insert the DNS-120 CD-ROM into your CD-ROM drive.

Click on **Launch D-Link Easy Search Utility**



Select the **DNS-120**

Click the **Configuration** button



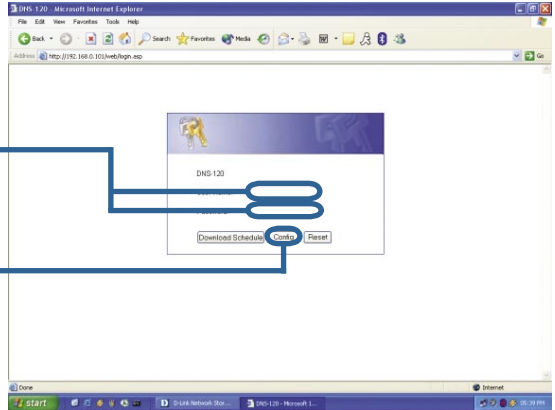
# 3

## Configuring the DNS-120 (continued)

The logon screen will appear.

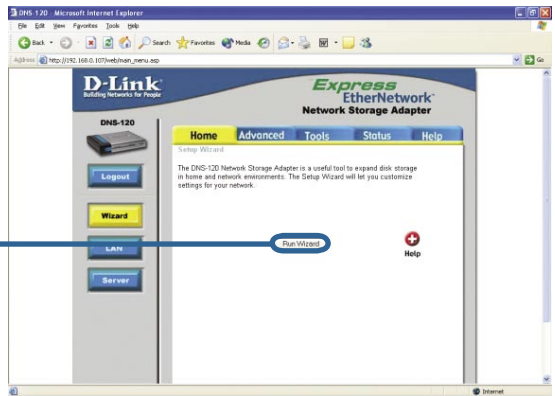
Type **admin** for the User Name and leave the Password field blank.

Click **Config**



Once you have logged in, the Home screen will appear.

Click **Run Wizard**



# 3

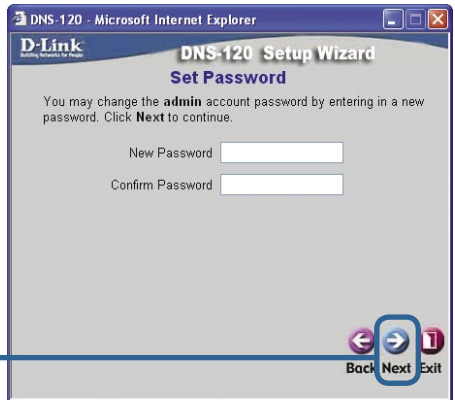
## Configuring the DNS-120 (continued)

You will see the following screen.



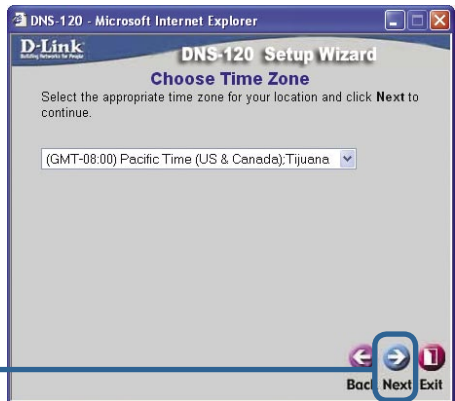
Click **Next**

**Set up your new password.** You have the option to establish a password. There is no password by default.



Click **Next**

**Choose your Time Zone.** Select the appropriate time zone from the pull-down menu.



Click **Next**

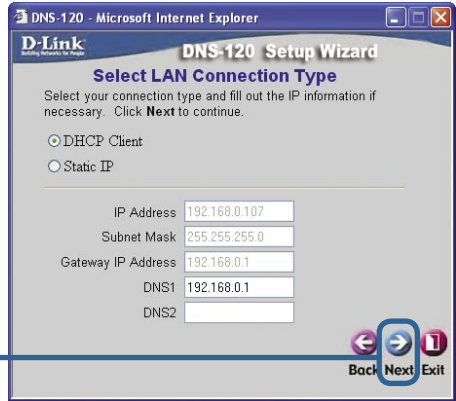
# 3

## Configuring the DNS-120 (continued)

### Select LAN Connection Type

Leave DHCP Client enabled if your network contains a DHCP server. If not, select Static IP and enter the IP address information to be used for the DNS-120. The IP address of the DNS-120 should be in the same range as your network.

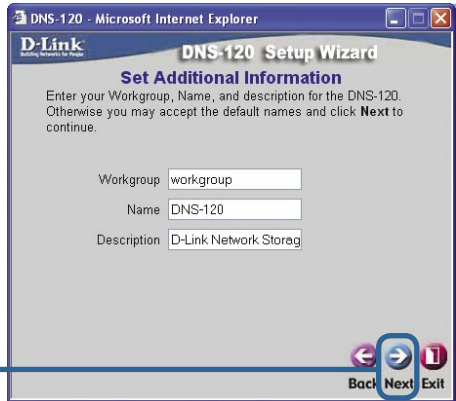
Click **Next**



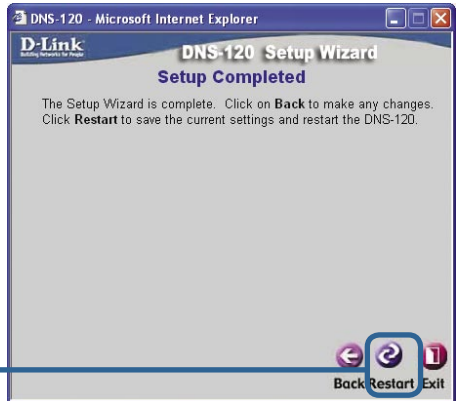
### Set Additional Information

Enter the workgroup name of your network. Enter a name for the DNS-120. Enter a description for the DNS-120.

Click **Next**



Click **Restart**



The DNS-120 Setup Wizard is complete! Please close all web browser windows. Use the Easy Search Utility to locate and continue further configuration of the DNS-120.

# 4

## Mapping Drive Letters

Launch the D-Link Easy Search Utility as shown on page 4.

The screenshot shows the 'D-Link DNS-120 Easy Search Utility' window. It is divided into three main sections: Server, LAN, and Lin Info. The Server section contains a table with columns for Name, IP, Netmask, and Gateway. The LAN section contains input fields for IP, Netmask, and Gateway, along with a DHCP Client dropdown and an Apply button. The Lin Info section contains a table with columns for Link Name and Location, a Network Drive dropdown, and Connect/Disconnect buttons. Three callout boxes with arrows point to specific elements: the first points to the Server table, the second points to the Link Name 'dlink' in the Lin Info table, and the third points to the Connect button.

Name	IP	Netmask	Gateway
DNS-120	192.168.0.107	255.255.255.0	192.168.0.1

LAN  
IP: 192 . 168 . 0 . 107 DHCP Client: Enabled  
Netmask: 255 . 255 . 255 . 0  
Gateway: 192 . 168 . 0 . 1

Lin Info  
Link Name Location Network Drive:  
dlink K:  
Connect Disconnect

Callouts:  
1. Select the appropriate folder listing. (points to Server table)  
2. Select a drive letter to assign. (points to 'dlink' in Link Name)  
3. Click the **Connect** button. (points to Connect button)

A message will appear indicating the success of the operation.



# 5

## Disconnecting Drives

- Press the **Disconnect** button on the rear panel of the DNS-120.
- The USB LED will flash red for a few seconds and turn off.
- You may now safely remove both USB drives.

NOTE: Both drives are disconnected when the Disconnect button is pressed. You must remove both drives from the USB ports. This is a safety feature to reduce the risk of data loss. After both drives have been removed you may reconnect a drive at any time.



# 6 Enabling FTP Access

You can enable FTP access to allow Internet/Intranet users FTP access to the drive(s) or folder(s) that you want to share.

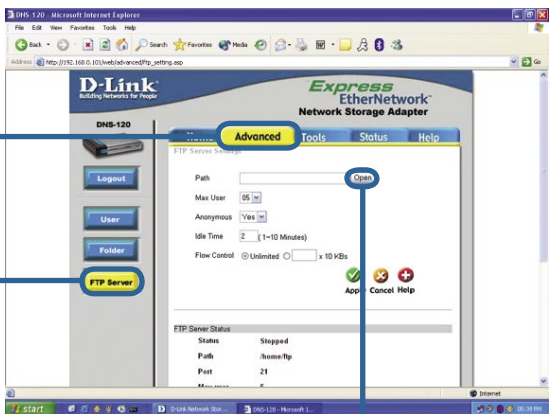


Unless additional precautions are taken, use of an FTP server to access files over the Internet does not provide secure or encrypted transmission. It is recommended that the end user utilize a Virtual Private Network (VPN) to establish a secure FTP session.



Select the **DNS-120**

Click the **Configuration** button



Select the **Advanced** tab

Select the **FTP Server** button

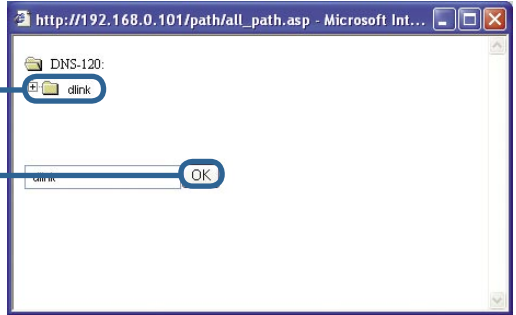
Click the **Open** button

# 6

## Enabling FTP Access (continued)

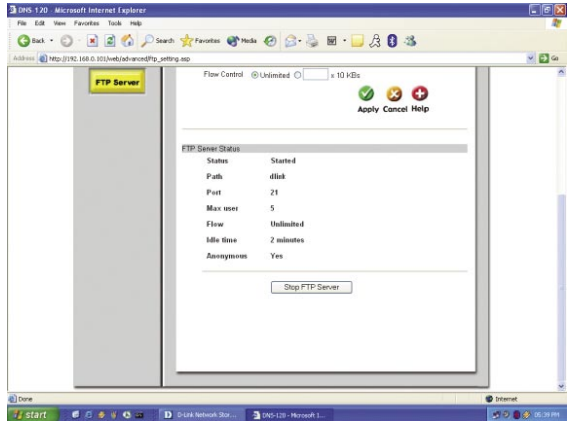
Select a volume or folder

Click **OK**



Press apply to save settings and start the FTP server.

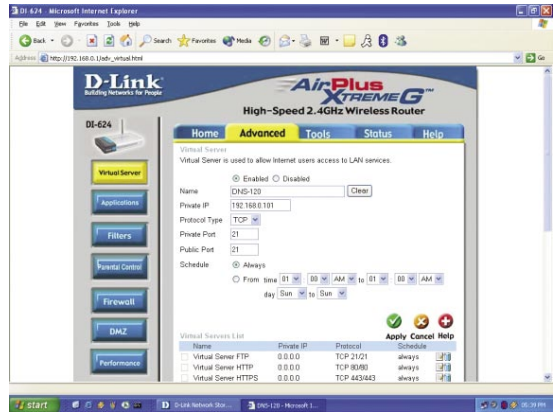
The FTP Server Status is displayed at the bottom of the screen. Scroll down to confirm the FTP Server has been started.



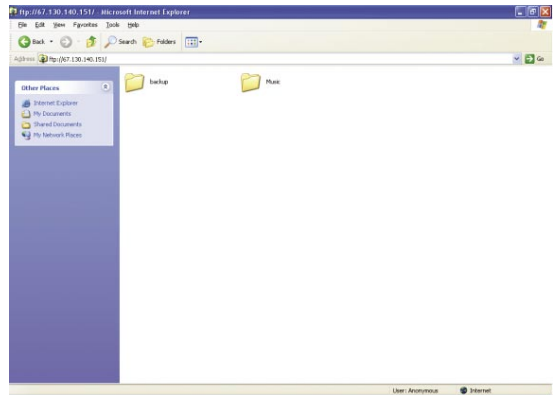
# 6

## Enabling FTP Access (continued)

The DNS-120 uses the standard FTP port assignment of 21. You will need to adjust your router's virtual server configuration to include the DNS-120 FTP server IP and port. Additional filtering and firewall settings may need to be modified on your router to allow Internet access to the DNS-120.



After configuring your router and DNS-120, you should be able to FTP to the DNS-120 using a web browser or FTP client.



# Technical Support

You can find software updates and user documentation on the D-Link website.

D-Link provides free technical support for customers within the United States and within Canada for the duration of the warranty period on this product.

U.S. and Canadian customers can contact D-Link technical support through our website, or by phone.

## Tech Support for customers within the United States:

### ***D-Link Technical Support over the Telephone:***

(877) 453-5465

24 hours a day, seven days a week.

### ***D-Link Technical Support over the Internet:***

<http://support.dlink.com>

[email:support@dlink.com](mailto:support@dlink.com)

## Tech Support for customers within Canada:

### ***D-Link Technical Support over the Telephone:***

(800) 361-5265

Monday to Friday 7:30am to 12:00am EST

Saturday and Sunday 11:00am to 7:00pm EST

### ***D-Link Technical Support over the Internet:***

<http://support.dlink.ca>

[email:support@dlink.ca](mailto:support@dlink.ca)

**D-Link<sup>®</sup>**  
Building Networks for People