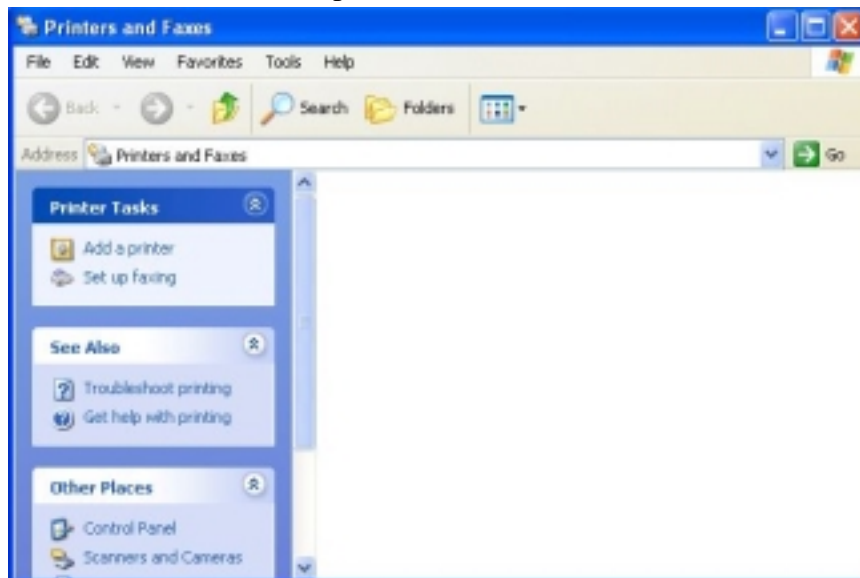


Set DP-300 LPR printing on Windows XP

1. Start menu → Click "Printers and Faxes" → It will apply the below window → Double Click "Add a printer".



2. Click "Next"



3. Select "Local printer attached to this computer" and disable "Automatically detect and install my plug and play printer" → Click "Next".

Add Printer Wizard

Local or Network Printer
The wizard needs to know which type of printer to set up.

Select the option that describes the printer you want to use:

☒ Local printer attached to this computer
☐ Automatically detect and install my Plug and Play printer
☐ A network printer, or a printer attached to another computer

 To set up a network printer that is not attached to a print server, use the "Local printer" option.

< Back Next > Cancel

4. Select "Create a new port" and "Standard TCP/IP Port" in Type of port → Click Next".


Add Printer Wizard

Select a Printer Port
Computers communicate with printers through ports.

Select the port you want your printer to use. If the port is not listed, you can create a new port.

☐ Use the following port: LPT1: (Recommended Printer Port)

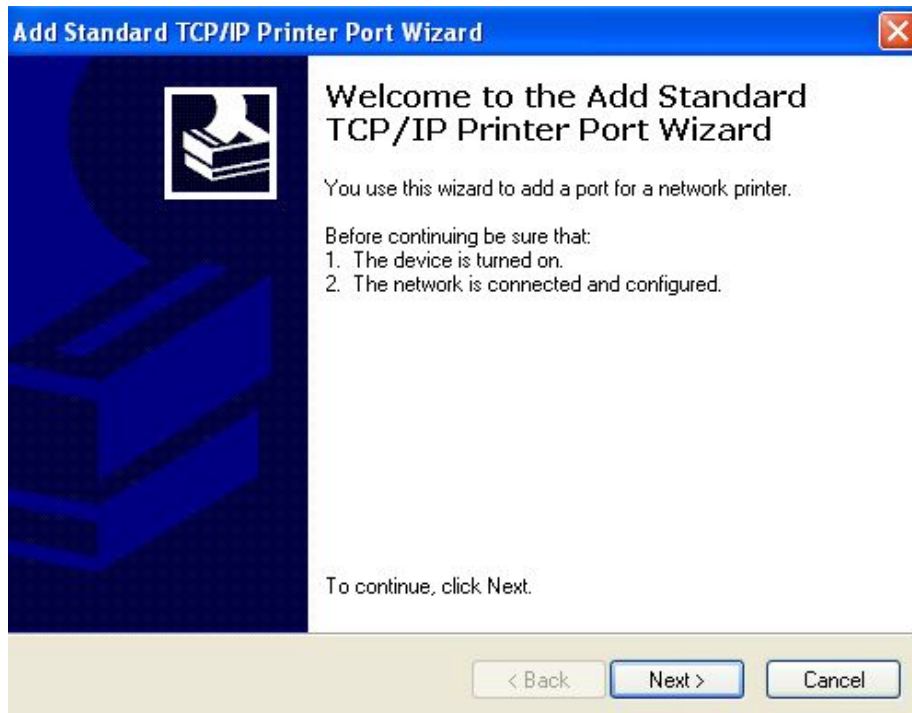
Note: Most computers use the LPT1: port to communicate with a local printer. The connector for this port should look something like this:



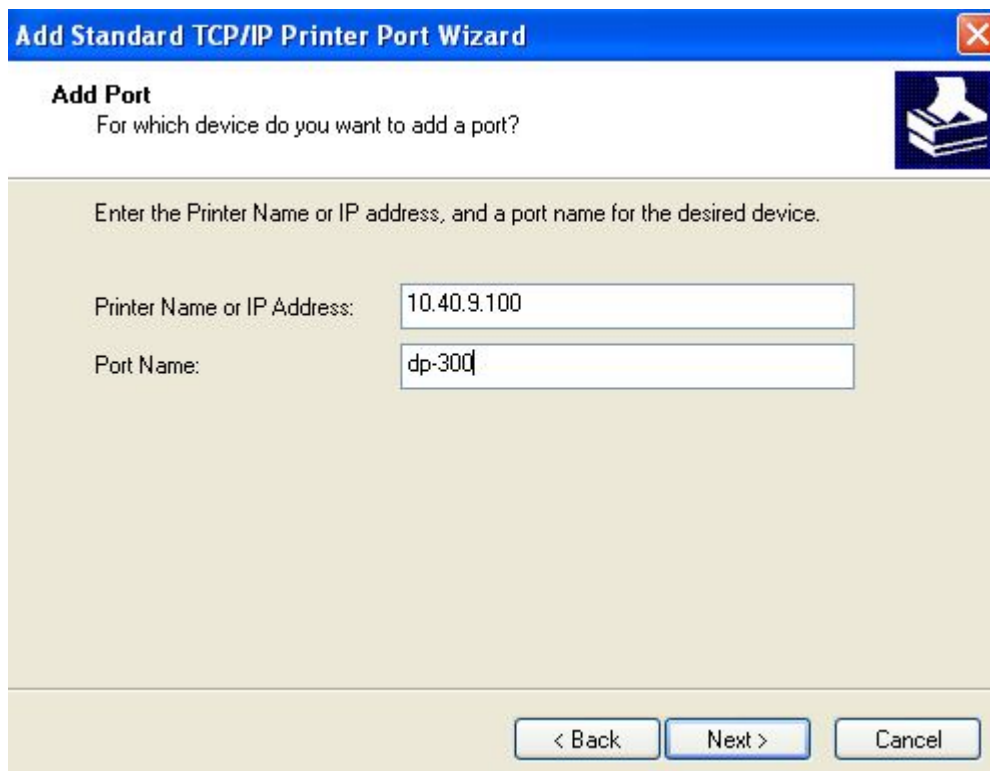
☒ Create a new port:
Type of port: Standard TCP/IP Port

< Back Next > Cancel

5. Click "Next".



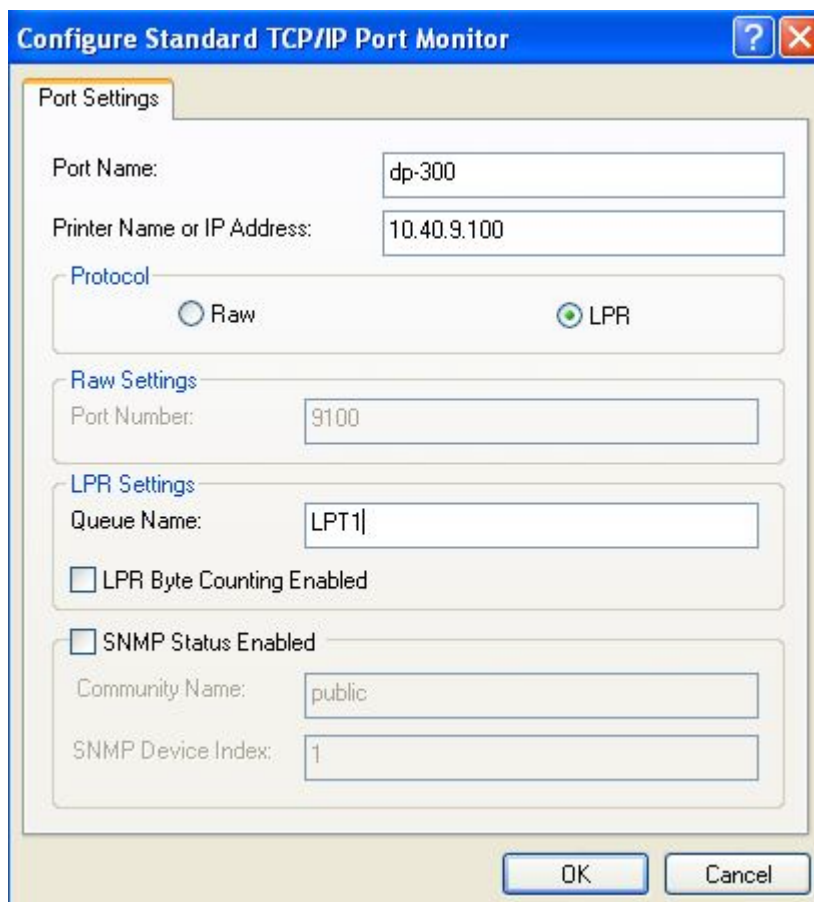
6. Type DP-300's IP address (i.e. 10.40.9.100) in "Printer Name or IP Address" → Click "Next". (You can modify Port Name from IP_10.40.9.100 to any name, which you want. Ex dp-300).



7. Select "Custom" → Click "Setting...".



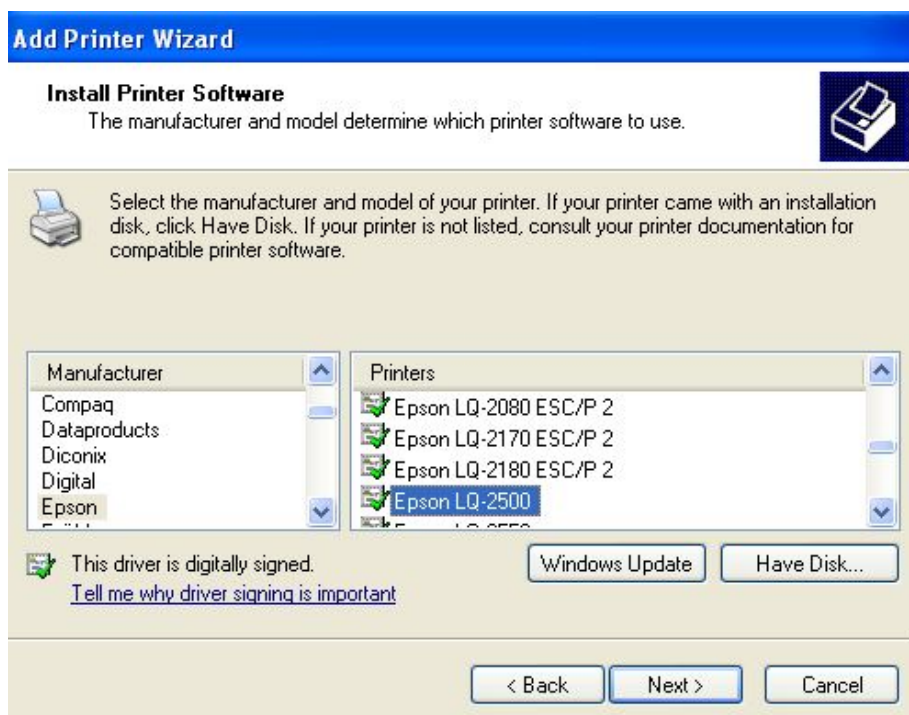
8. Select "LPR" and Type the port name (LPT1) of DP-300 in Queue Name → Click "OK".



9. Click "Finish".



10. The system will ask the driver for your printer, please select/install the correct driver for your printer → Click "Next"



11. Click "Next".

Add Printer Wizard

Name Your Printer

You must assign a name to this printer.



Type a name for this printer. Because some programs do not support printer and server name combinations of more than 31 characters, it is best to keep the name as short as possible.

Printer name:

Do you want to use this printer as the default printer?

☒ Yes

☐ No

< Back

Next >

Cancel

12. Click "Next".

Add Printer Wizard

Print Test Page

To confirm that the printer is installed properly, you can print a test page.



Do you want to print a test page?

☒ Yes

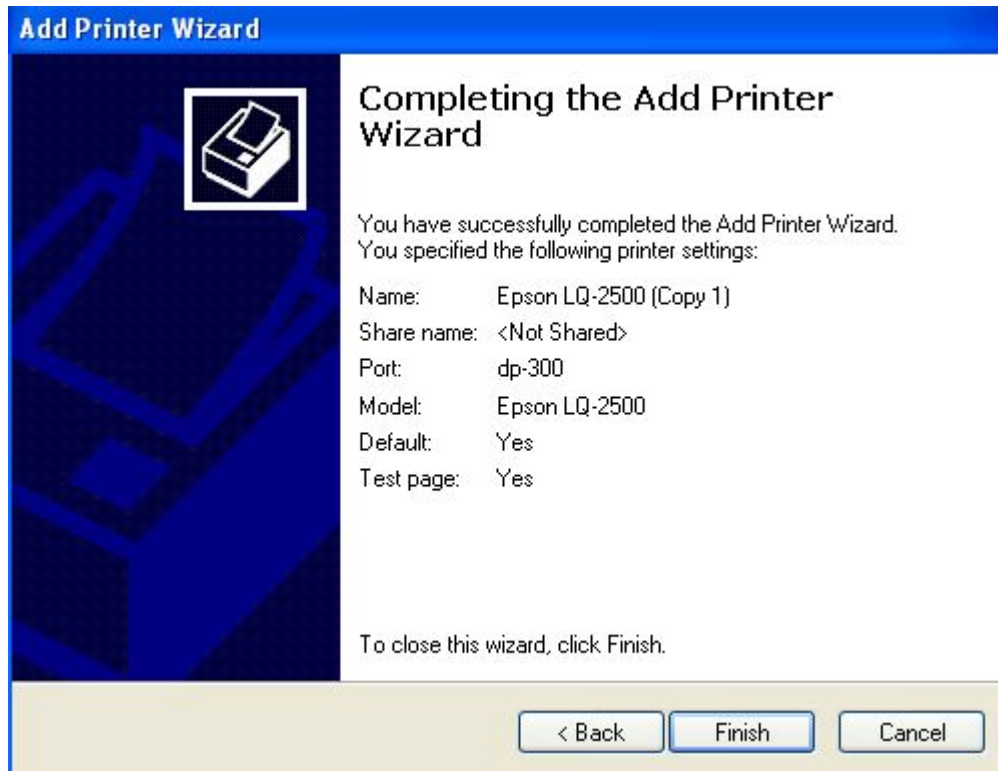
☐ No

< Back

Next >

Cancel

13. Click "Finish".



Then the printer will print out "Windows XP Printer test page".