



## DIR-806A

### Wireless AC750 Multi-Function Router

## BEFORE YOU BEGIN

### *Delivery Package*

- Wireless router DIR-806A
- Power adapter DC 5V/1.2A
- Ethernet cable (CAT 5E)
- “*Quick Installation Guide*” (brochure).

If any of the items are missing, please contact your reseller.

The “*User Manual*” and “*Quick Installation Guide*” documents in Russian and English are available on D-Link website (see <ftp.dlink.ru/pub/Router/DIR-806A/Description/>).

**!** Using a power supply with a different voltage rating than the one included will cause damage and void the warranty for this product.

### *Default Settings*

|                                 |                  |
|---------------------------------|------------------|
| IP address of wireless router   | 192.168.0.1      |
| Username (login)                | admin            |
| Password                        | admin            |
| Name of wireless network (SSID) | 2.4GHz DIR-806A  |
|                                 | 5GHz DIR-806A-5G |

## ***System Requirements and Equipment***

- A computer with any operating system that supports a web browser.
- A web browser to access the web-based interface of the router:
  - Apple Safari 5 and later
  - Google Chrome 5 and later
  - Microsoft Internet Explorer 7 and later
  - Mozilla Firefox 5 and later
  - Opera 10 and later.
- A NIC (Ethernet or Wi-Fi adapter) to connect to the router.
- An 802.11a, b, g, n, or ac Wi-Fi adapter to create a wireless network.

## CONNECTING TO PC

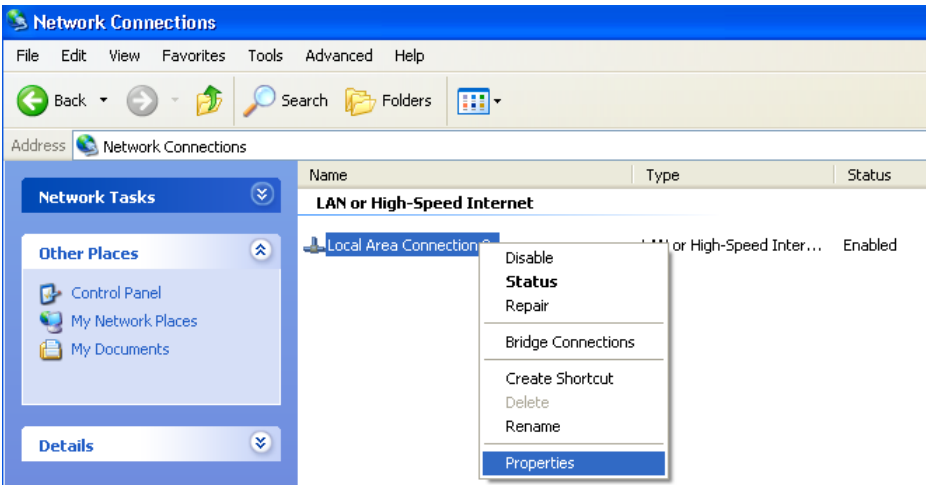
### *PC with Ethernet Adapter*

1. Make sure that your PC is powered off.
2. Connect an Ethernet cable between any of LAN ports located on the back panel of the router and the Ethernet port of your PC.
3. Connect the power cord to the power connector port on the left side panel of the router, then plug the power adapter into an electrical outlet or power strip.
4. Turn on your PC and wait until your operating system is completely loaded.

Now you should configure your PC to obtain an IP address automatically (as DHCP client).

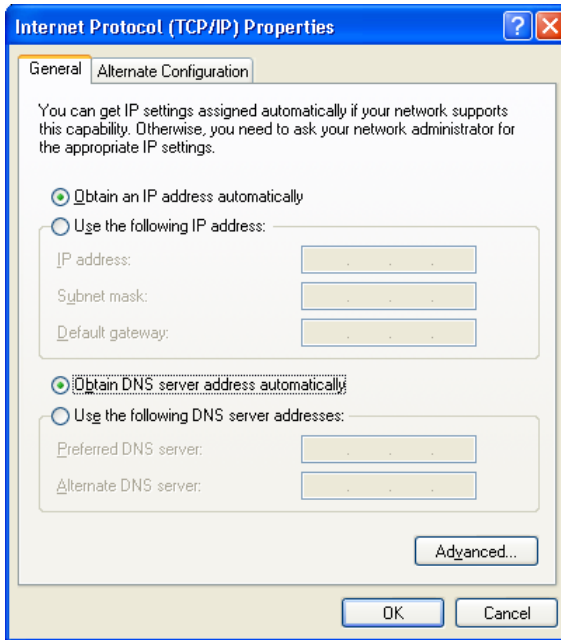
## Obtaining IP Address Automatically in OS Windows XP

1. Click the **Start** button and proceed to the **Control Panel > Network and Internet Connections > Network Connections** window.
2. In the **Network Connections** window, right-click the relevant **Local Area Connection** icon and select the **Properties** line in the menu displayed.



3. In the **Local Area Connection Properties** window, on the **General** tab, select the **Internet Protocol (TCP/IP)** line. Click the **Properties** button.

4. Select the **Obtain an IP address automatically** and **Obtain DNS server address automatically** radio buttons. Click the **OK** button.

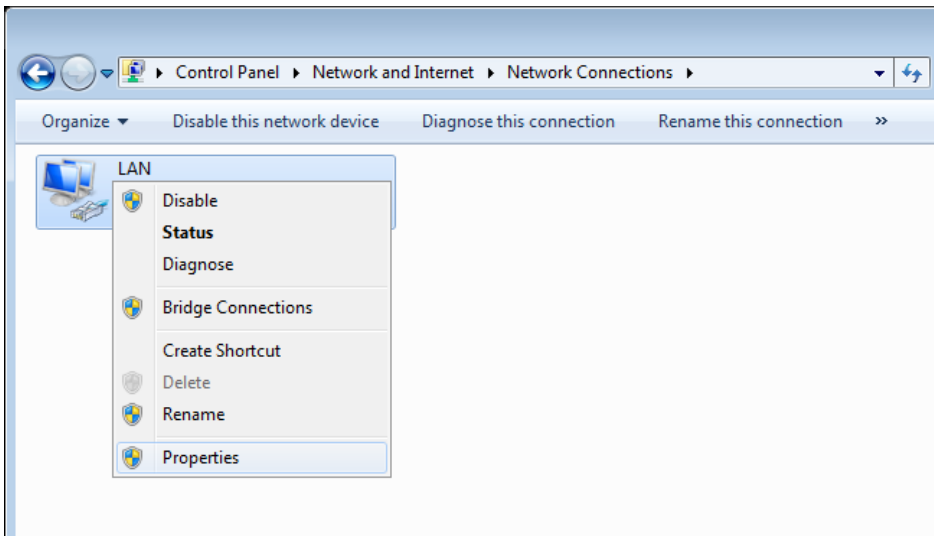


5. Click the **OK** button in the connection properties window.

Now your computer is configured to obtain an IP address automatically.

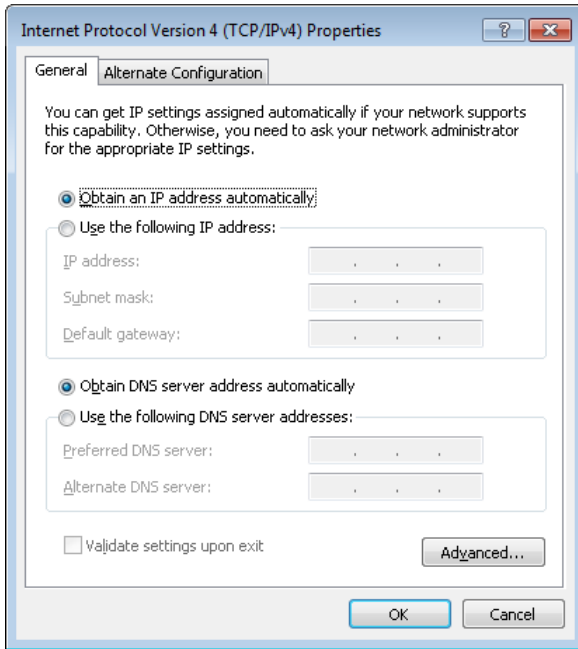
## Obtaining IP Address Automatically in OS Windows 7

1. Click the **Start** button and proceed to the **Control Panel** window.
2. Select the **Network and Sharing Center** section. (If the Control Panel has the category view (the **Category** value is selected from the **View by** drop-down list in the top right corner of the window), choose the **View network status and tasks** line under the **Network and Internet** section.)
3. In the menu located on the left part of the window, select the **Change adapter settings** line.
4. In the opened window, right-click the relevant **Local Area Connection** icon and select the **Properties** line in the menu displayed.



5. In the **Local Area Connection Properties** window, on the **Networking** tab, select the **Internet Protocol Version 4 (TCP/IPv4)** line. Click the **Properties** button.

6. Select the **Obtain an IP address automatically** and **Obtain DNS server address automatically** radio buttons. Click the **OK** button.



7. Click the **OK** button in the connection properties window.  
Now your computer is configured to obtain an IP address automatically.



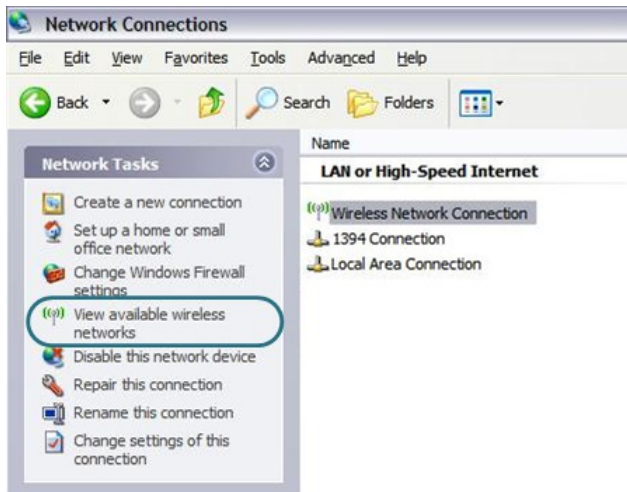
## ***PC with Wi-Fi Adapter***

1. Connect the power cord to the power connector port on the left side panel of the router, then plug the power adapter into an electrical outlet or power strip.
2. Turn on your PC and wait until your operating system is completely loaded.
3. Turn on your Wi-Fi adapter. As a rule, modern notebooks with built-in wireless NICs are equipped with a button or switch that turns on/off the wireless adapter (refer to your PC documents). If your PC is equipped with a pluggable wireless NIC, install the software provided with your Wi-Fi adapter.

Now you should configure your Wi-Fi adapter.

## Configuring Wi-Fi Adapter in OS Windows XP

1. Click the **Start** button and proceed to the **Control Panel > Network and Internet Connections > Network Connections** window.
2. Select the icon of the wireless network connection and make sure that your Wi-Fi adapter is on.



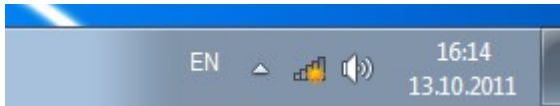
3. Search for available wireless networks.
4. In the opened **Wireless Network Connection** window, select the wireless network **DIR-806A** (for operating in the 2.4GHz band) or **DIR-806A-5G** (for operating in the 5GHz band) and click the **Connect** button.

After that the **Wireless Network Connection Status** window appears.

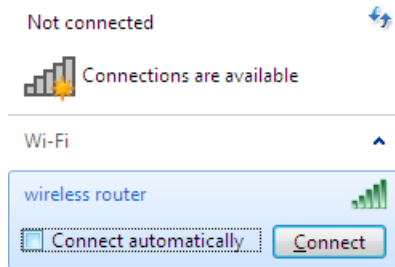
! If you perform initial configuration of the router via Wi-Fi connection, note that immediately after changing the wireless default settings of the router you will need to reconfigure the wireless connection using the newly specified settings.

## Configuring Wi-Fi Adapter in OS Windows 7

1. Click the **Start** button and proceed to the **Control Panel** window.
2. Select the **Network and Sharing Center** section. (If the Control Panel has the category view (the **Category** value is selected from the **View by** drop-down list in the top right corner of the window), choose the **View network status and tasks** line under the **Network and Internet** section.)
3. In the menu located on the left part of the window, select the **Change adapter settings** line.
4. In the opened window, select the icon of the wireless network connection and make sure that your Wi-Fi adapter is on.
5. To open the list of available wireless networks, select the icon of the wireless network connection and click the **Connect To** button or left-click the network icon in the notification area located on the right side of the taskbar.



- In the opened window, in the list of available wireless networks, wireless network **DIR-806A** (for operating in the 2.4GHz band) or **DIR-806A-5G** (for operating in the 5GHz band) and click the **Connect** button.



[Open Network and Sharing Center](#)

- Wait for about 20-30 seconds. After the connection is established, the network icon will be displayed as the signal level scale.



If you perform initial configuration of the router via Wi-Fi connection, note that immediately after changing the wireless default settings of the router you will need to reconfigure the wireless connection using the newly specified settings.

# CONFIGURING ROUTER

## Connecting to Web-based Interface

1. Start a web browser.
2. In the address bar of the web browser, enter the IP address of the router (by default, the following IP address is specified: **192.168.0.1**). Press the **Enter** key.

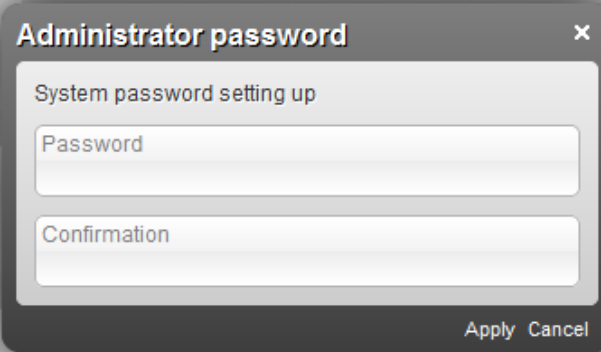


3. On the opened page, enter the username and password for the administrator account in the **Login** and **Password** fields correspondingly (by default, the following username and password are specified: **admin, admin**). Then click the **Enter** link.

A screenshot of a web browser displaying the "Authorization" page of a router. The page has a dark grey background. At the top, the word "Authorization" is written in white. Below it, there are two input fields. The first field is labeled "Login" and contains the text "admin". The second field is labeled "Password" and contains six black dots. At the bottom right of the form area, there are two buttons: "Enter" and "Clear".

If the error “The page cannot be displayed” (or “Unable to display the page”/“Could not connect to remote server”) occurs upon connecting to the web-based interface of the router, make sure that you have properly connected the router to your computer.

Right after the first access to the web-based interface you are forwarded to the page for changing the administrator password specified by default.



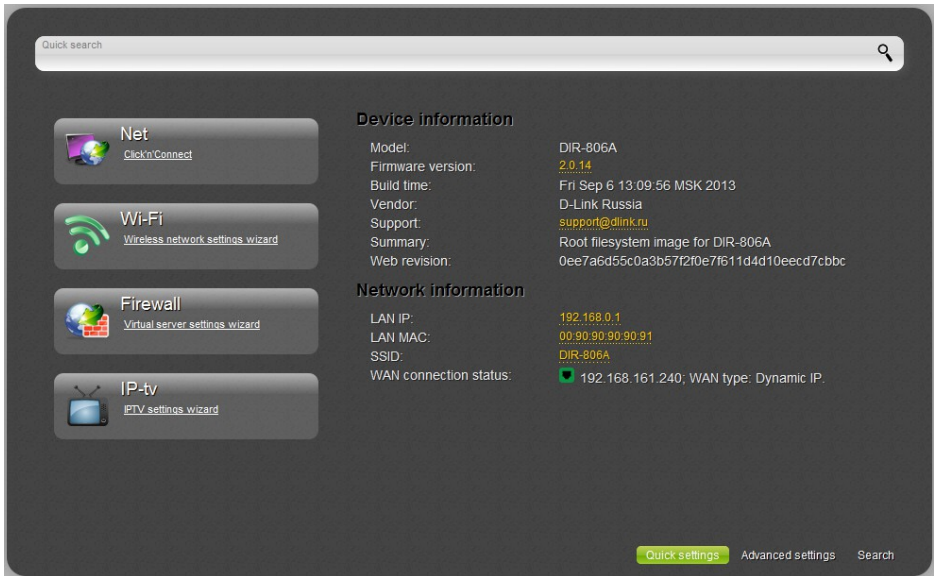
The image shows a web-based dialog box titled "Administrator password" with a close button (X) in the top right corner. The dialog contains the text "System password setting up" and two input fields labeled "Password" and "Confirmation". At the bottom right of the dialog, there are two buttons: "Apply" and "Cancel".

Enter a new password in the **Password** and **Confirmation** fields (you may use digits, Latin letters (uppercase and/or lowercase), and characters available on the keyboard), then click the **Apply** link.

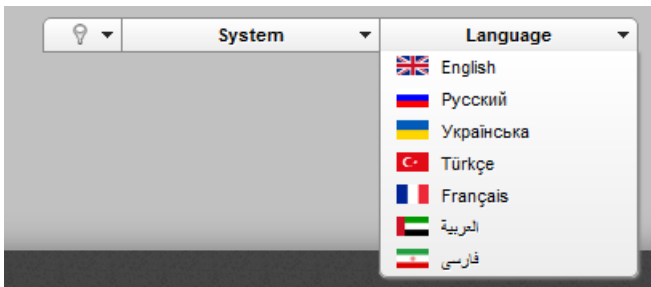



Remember or write down the new password for the administrator account. In case of losing the new password, you can access the settings of the router only after restoring the factory default settings via the hardware button located on the front panel of the router. This procedure wipes out all settings that you have configured for your router.

After successful registration the router's quick settings page opens.



The web-based interface of the router is multilingual. Select a needed language from the menu displayed when the mouse pointer is over the **Language** caption. You can change the language of the web-based interface in any menu item.



After selecting the language, the notification on unsaved changes will be displayed. Click the **Save** icon (  ) to save the current language of the web-based interface as the default language.

The quick settings page displays general information on the router and its software (the version and the date of the firmware, the IP address of the device, the name of the 2.4GHz WLAN, etc.).


On the quick settings page, you can quickly get to some pages of the web-based interface or run a needed Wizard (use the links on the left side of the page).

From the quick settings page you can switch to the advanced settings section. To do this, click the **Advanced settings** link in the bottom right corner of the page.

Also you can find a specific page via search. To do this, enter the name of the page, wholly or partly, in the search bar in the top part of the web-based interface page, and then select a needed link in the search results.



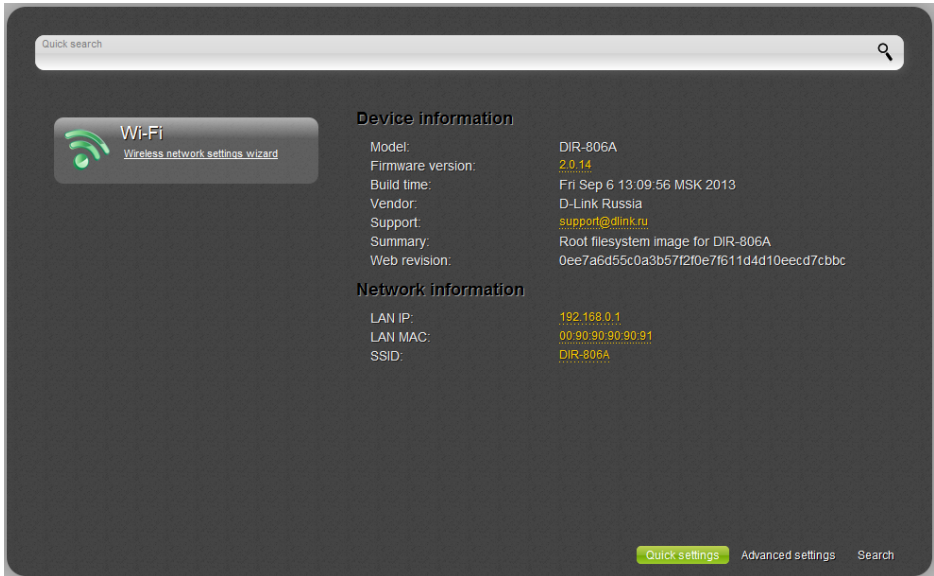
## Selecting Operation Mode

By default, the router mode is specified for the device. If you need to use the device as an access point, on the advanced settings page, select the **AP** position (  ) of the **Switch device mode** switch. In the opened dialog box, click the **OK** button to save new settings and immediately reboot the router.

Also you can change the operating mode of the device on the **System / Device mode** page. To do this, on the page, select the **Access point** value from the **Work mode** list, and click the **Apply** button. In the opened dialog box, click the **OK** button and wait until the device is rebooted.



After the device has rebooted, the quick settings page in the access point mode opens.



On the opened page, you can run the Wi-Fi Setup Wizard (use the link on the left side of the page), quickly get to some pages of the web-based interface, find a specific page via search, or switch to the standard web-based interface of the router by clicking the **Advanced settings** link in the bottom right corner of the page.

## Configuring Connection to the Internet



You should configure your WAN connection in accordance with data provided by your Internet service provider (ISP). Make sure that you have obtained all necessary information prior to configuring your connection. Otherwise contact your ISP.


### Configuring WAN Connection

1. Go to the **Net / WAN** page, select the **WAN** connection and click the **Delete** button.
2. Click the **Add** button.
3. From the **Connection Type** drop-down list, select the needed value.
4. From the **Interface** drop-down list, select the **WAN** value.

The screenshot shows the 'General settings' section of a configuration interface. It includes the following fields and options:

- Connection Type:** A dropdown menu with 'PPPoE' selected.
- Interface:** A dropdown menu with 'WAN' selected.
- Name:** A text input field with a red asterisk indicating it is required. The field is currently empty.
- Enable:** A checkbox that is checked.
- Direction:** A dropdown menu with 'WAN' selected.

5. Specify a name for your connection (any name for easier identification) in the **Name** field.

6. If your ISP uses MAC address binding, in the **Ethernet** section, in the **MAC** field, enter the MAC address registered by your ISP upon concluding the agreement. To set the MAC address of the network interface card (of the computer that is being used to configure the router at the moment) as the MAC address of the WAN interface, click the **Clone MAC Address** button (  ). To set the address of a device connected to the router's LAN at the moment, select the relevant value from the drop-down list (the field will be filled in automatically).

**Ethernet**

---

MTU:\*

MAC:  

7. *For connection of PPPoE type:* in the **PPP** section, enter authorization data provided by your ISP (the username (login) in the **Username** field and the password in the **Password** and **Password confirmation** fields), or select the **Without authorization** checkbox if authorization is not required.

**PPP**

---

Username:\*

Without authorization:

Password:\*

Password confirmation:\*

8. *For connection of Static IP type:* in the **IP** section, fill in the **IP Address**, **Netmask**, **Gateway IP address**, and **Primary DNS server** fields.

IP

---

IP Address:\*

Netmask:\*

Gateway IP address:\*

Primary DNS server:\*

Secondary DNS server:

9. *For connection of Dynamic IP type:* if your ISP has provided the address of the DNS server, in the **IP** section, deselect the **Obtain DNS server addresses automatically** checkbox and fill in the **Primary DNS server** field.

IP

---

Obtain DNS server addresses automatically:

Primary DNS server:\*

Secondary DNS server:

Vendor ID:

10. **For connection of PPTP + Static IP or L2TP + Static IP type:** in the **IP** section, fill in the **IP Address**, **Netmask**, **Gateway IP address**, and **Primary DNS server** fields. Then in the **VPN** section, enter authorization data provided by your ISP (the username (login) in the **Username** field and the password in the **Password** and **Password confirmation** fields), or select the **Without authorization** checkbox if authorization is not required. In the **VPN server address** field, enter the IP or URL address of the PPTP or L2TP authentication server. If your ISP applies encryption, select a needed value from the **Encryption** drop-down list.

**IP**

---

IP Address:\*

Netmask:\*

Gateway IP address:\*

Primary DNS server:\*

Secondary DNS server:

**VPN**

---

Connect automatically:

Username:\*

Without authorization:

Password:\*

Password confirmation:\*

VPN server address:\*

Encryption:

11. *For connection of PPTP + Dynamic IP or L2TP + Dynamic IP type:* if your ISP has provided the address of the DNS server, in the **IP** section, deselect the **Obtain DNS server addresses automatically** checkbox and fill in the **Primary DNS server** field. Then in the **VPN** section, enter authorization data provided by your ISP (the username (login) in the **Username** field and the password in the **Password** and **Password confirmation** fields), or select the **Without authorization** checkbox if authorization is not required. In the **VPN server address** field, enter the IP or URL address of the PPTP or L2TP authentication server. If your ISP applies encryption, select a needed value from the **Encryption** drop-down list.

### IP

---

Obtain DNS server addresses automatically:

Primary DNS server:\*

Secondary DNS server:

Vendor ID:

### VPN

---

Connect automatically:

Username:\*

Without authorization:

Password:\*

Password confirmation:\*

VPN server address:\*

Encryption:

12. Click the **Apply** button.

## Example of Connection via VLANs

If your ISP provides:

- access to the Internet via the VLAN with the tag (VLAN ID) **2**, the **PPPoE** connection type, the login **user**, and the password **user\_password**,
- access to IPTV service via the VLAN with the tag (VLAN ID) **10**,
- access to IP telephony via the VLAN with the tag (VLAN ID) **20**,

and your set-top box is connected to the LAN port 3, your VoIP phone is connected to the LAN port 4 of the router, then follow the next steps to configure the router.

1. Go to the **Net / WAN** page, select the **WAN** connection and click the **Delete** button on the opened page.
2. Go to the **Advanced / VLAN** page.
3. Select the **lan** group.
4. Select the line **port3** in the table at the bottom of the page and click the **Delete port** button.
5. Select the line **port4** and click the **Delete port** button.
6. Click the **Apply** button.
7. Select the **wan** group.
8. In the **Name** field, enter a name for the group (**INTERNET**).
9. From the **Type** drop-down list, select the **NAT** value.
10. From the **Port** drop-down list, select the value **internet** (corresponds to the **WAN** port of the router).
11. From the **Tag** drop-down list, select the **tagged** value.
12. In the **VLAN ID** field, enter **2**.
13. Click the **Apply** button.

You have created the group of ports for connection to the Internet.



14. Click the **Add** button.
15. In the **Name** field, enter a name for the new group (**IPTV**).
16. From the **Type** drop-down list, select the **Transparent** value.
17. From the **Port** drop-down list, select the value **port3**.
18. From the **Tag** drop-down list, select the **untagged** value.
19. From the **Port** drop-down list, select the value **internet**.
20. From the **Tag** drop-down list, select the **tagged** value.
21. In the **VLAN ID** field, enter **10**.
22. Click the **Apply** button.

You have created the group of ports for IPTV service.

23. Click the **Add** button.
24. In the **Name** field, enter a name for the new group (**VOIP**).
25. From the **Type** drop-down list, select the **Transparent** value.
26. From the **Port** drop-down list, select the value **port4**.
27. From the **Tag** drop-down list, select the **untagged** value.
28. From the **Port** drop-down list, select the value **internet**.
29. From the **Tag** drop-down list, select the **tagged** value.
30. In the **VLAN ID** field, enter **20**.
31. Click the **Apply** button.

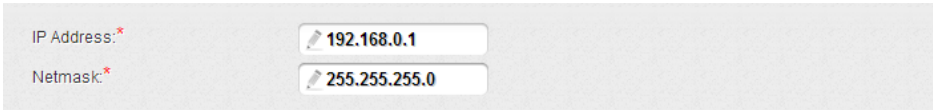
You have created the group of ports for access to IP telephony.

| Настройка VLAN                 |            |  |         |           |
|--------------------------------|------------|--|---------|-----------|
| Создание и редактирование VLAN |            |  |         |           |
| Имя                            | Тип        | Порты  | VLAN ID | Разрешить |
| lan                            | Локальный  | wifi2 (U)<br>port1 (U)<br>port2 (U)<br>wifi1 (U) |         | Да        |
| INTERNET                       | NAT        | internet (T)                                     | 2       | Да        |
| IPTV                           | Прозрачный | internet (T)<br>port3 (U)                        | 10      | Да        |
| VOIP                           | Прозрачный | internet (T)<br>port4 (U)                        | 20      | Да        |

32. Click the **Save&Reboot** line in the top-page menu displayed when the mouse pointer is over the **System** caption.
33. Log into the web-based interface and go to the **Net / WAN** page.
34. Click the **Add** button.
35. On the opened page, select the **PPPoE** value from the **Connection Type** drop-down list.
36. From the **Interface** drop-down list, select the value **Internet.2**.
37. In the **Username** field, enter **user**.
38. Deselect the **Without authorization** checkbox.
39. In the **Password** and **Password confirmation** fields, enter **user\_password**.
40. Click the **Apply** button.

## Configuring Local Area Network

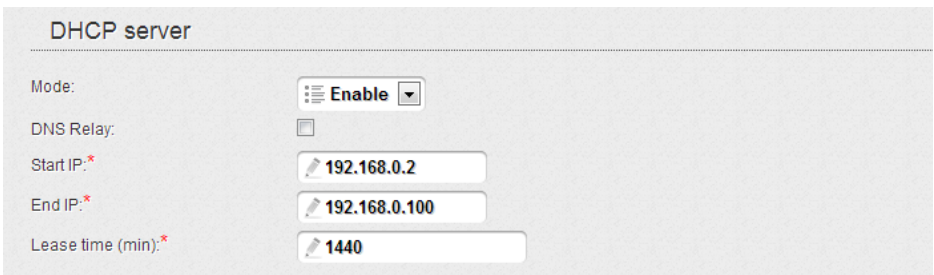
1. Go to the **Net / LAN** page. If needed, change the IP address of the router's LAN interface and the mask of the local subnet in the **IP Address** and **Netmask** fields. Then click the **Apply** button.



IP Address:\*

Netmask:\*

2. By default, the DHCP server of the router is enabled. In the **DHCP server** section, you can change the parameters of the DHCP server. If you want to manually assign IP addresses to devices of your LAN, disable the DHCP server (select the **Disable** value from the **Mode** drop-down list).



DHCP server

Mode:  **Enable** ▼

DNS Relay:

Start IP:\*

End IP:\*

Lease time (min):\*

3. After specifying the DHCP server settings, click the **Apply** button.

## Configuring Wireless Network

By default, the wireless network of the router is open (it requires no password to access it). To avoid unauthorized access to your wireless local area network, change the default settings of the router.

### Example of Wireless Settings

1. Go to the **Wi-Fi / Security settings** page.
2. Go to the tab corresponding to the used range of the wireless network (**2.4 GHz** or **5 GHz**).
3. Select the **WPA2-PSK** value from the **Network Authentication** drop-down list.

Network Authentication: **WPA2-PSK**

Encryption Key PSK:\*

WPA2 Pre-authentication:

**WPA Encryption settings**

WPA Encryption: **AES**

WPA renewal:\* **3600**

4. Enter a key (a password that will be used to access your wireless network) in the **Encryption Key PSK** field. Use digits and Latin characters.
5. Select the **AES** value from the **WPA Encryption** drop-down list.
6. Click the **Apply** button.
7. If needed, specify your own security settings for the other range of the wireless network.

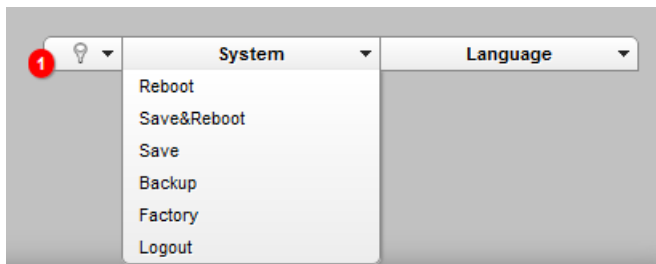


If you perform initial configuration of the router via Wi-Fi connection, note that immediately after changing the wireless default settings you will need to reconfigure the wireless connection using the newly specified settings.

## Saving Settings to Non-volatile Memory

In order to avoid losing the new settings upon hardware reboot (accidental or intentional power-off of the device), it is recommended to save the settings to the non-volatile memory of the router.

Click the **Save&Reboot** line in the top-page menu displayed when the mouse pointer is over the **System** caption.



Wait until the router is rebooted. Now you can use it to access the Internet or access the web-based interface of the router to configure additional parameters. For detailed description of every page of the web-based interface, see the “*User Manual*” document (<ftp.dlink.ru/pub/Router/DIR-806A/Description/>).

## TECHNICAL SUPPORT

You can find software updates and user documentation on our website.

D-Link provides its customers with free support within the product's warranty period.

Customers can contact the technical support group by phone or by e-mail/Internet.

### FOR TELEPHONE NUMBERS AND ADDRESSES OF D-LINK OFFICES WORLDWIDE VISIT

<http://www.dlink.com/corporate/worldwideoffices/>