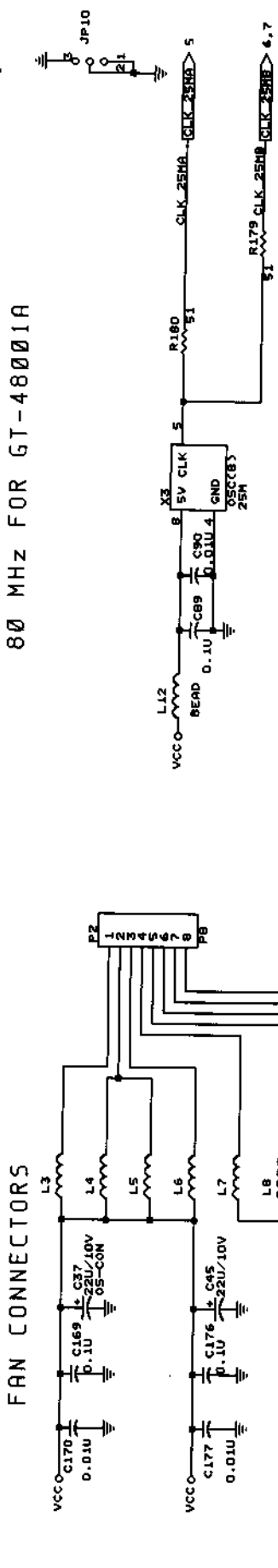
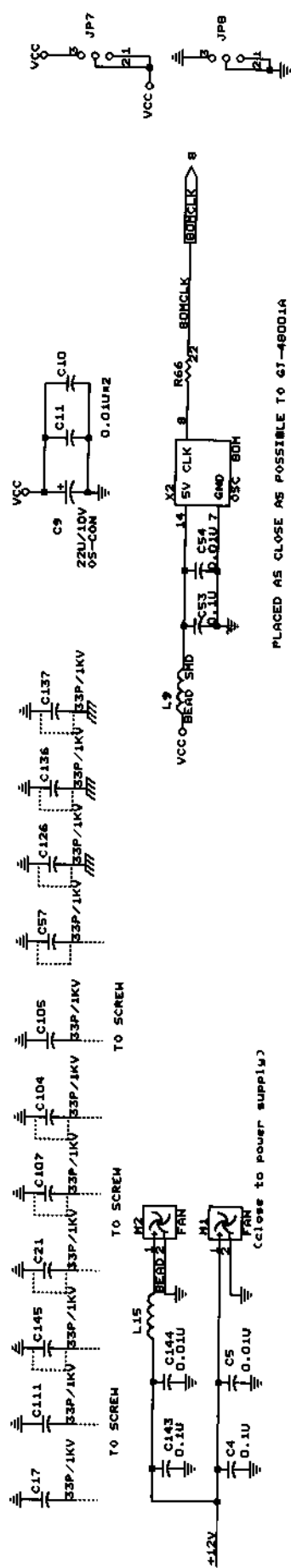
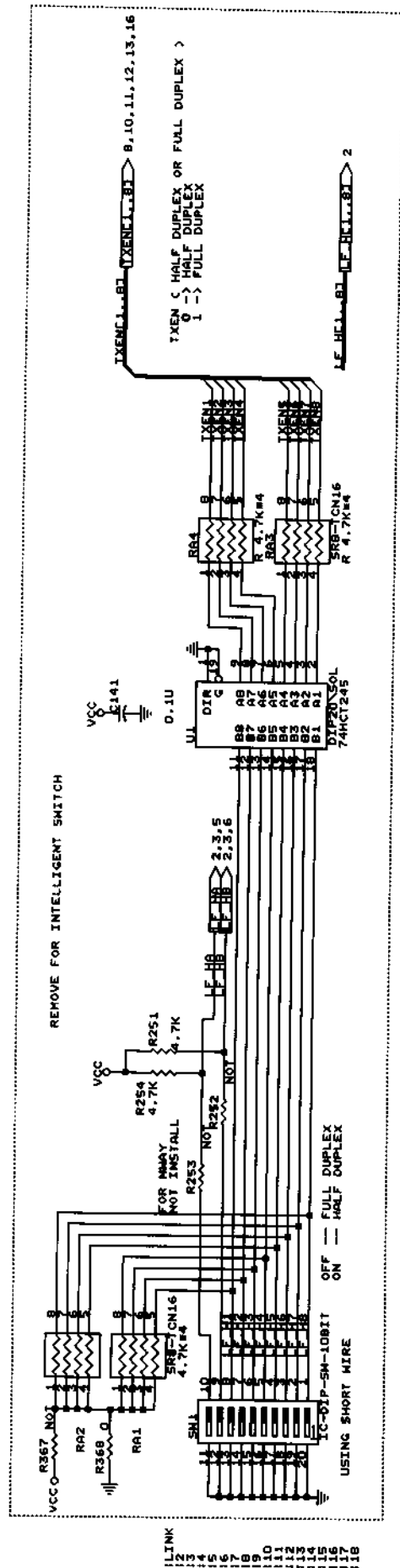


TITLE DES-2218 Rev A3 電路圖

生效日期: 87. 6. 26

REVISION		STATUS
PAGE		REV
0 ~ 0-1		A
1 ~ 26		A

APPROVED		CHECKED		DEPARTMENT	PREPARED
張福財		張福財		EDI	陳智文
代 87.6.26					

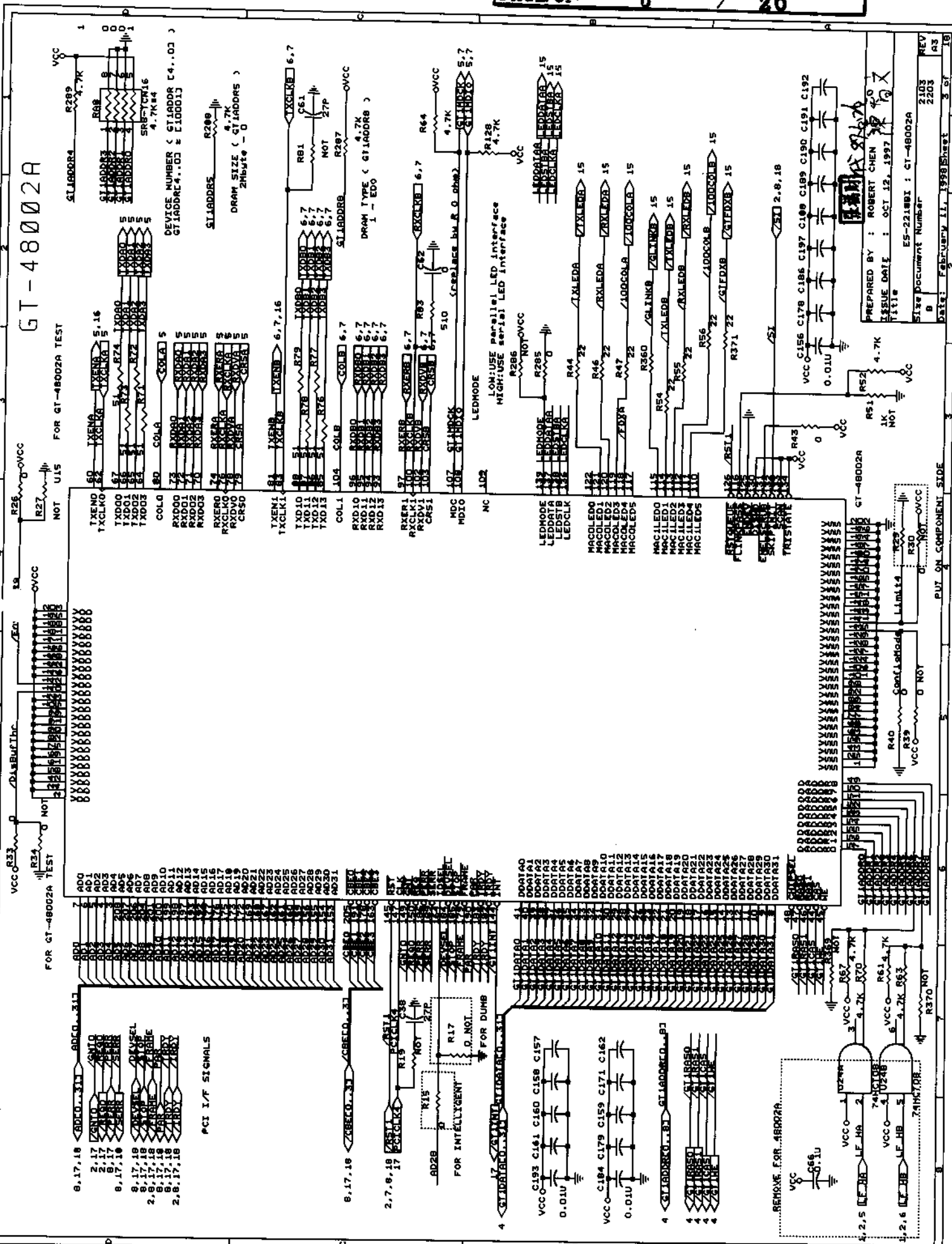


POWER CONNECTOR

D-Link®		Corporation	
DOC. NO.: 305DES2218 --- A3 --		Version: A	
Approved: 張福財		Prepared by: ROBERT CHEN	
Checked: 張福財		Issue Date: OCT 12, 1997	
		Title: ES-2218BI : POWER/FAN CONN. & SYS CLOCK	
		Size Document Number: 2103 2203	
		REV: 03	
		Date: February 8, 1998 Sheet: 1 of 13	

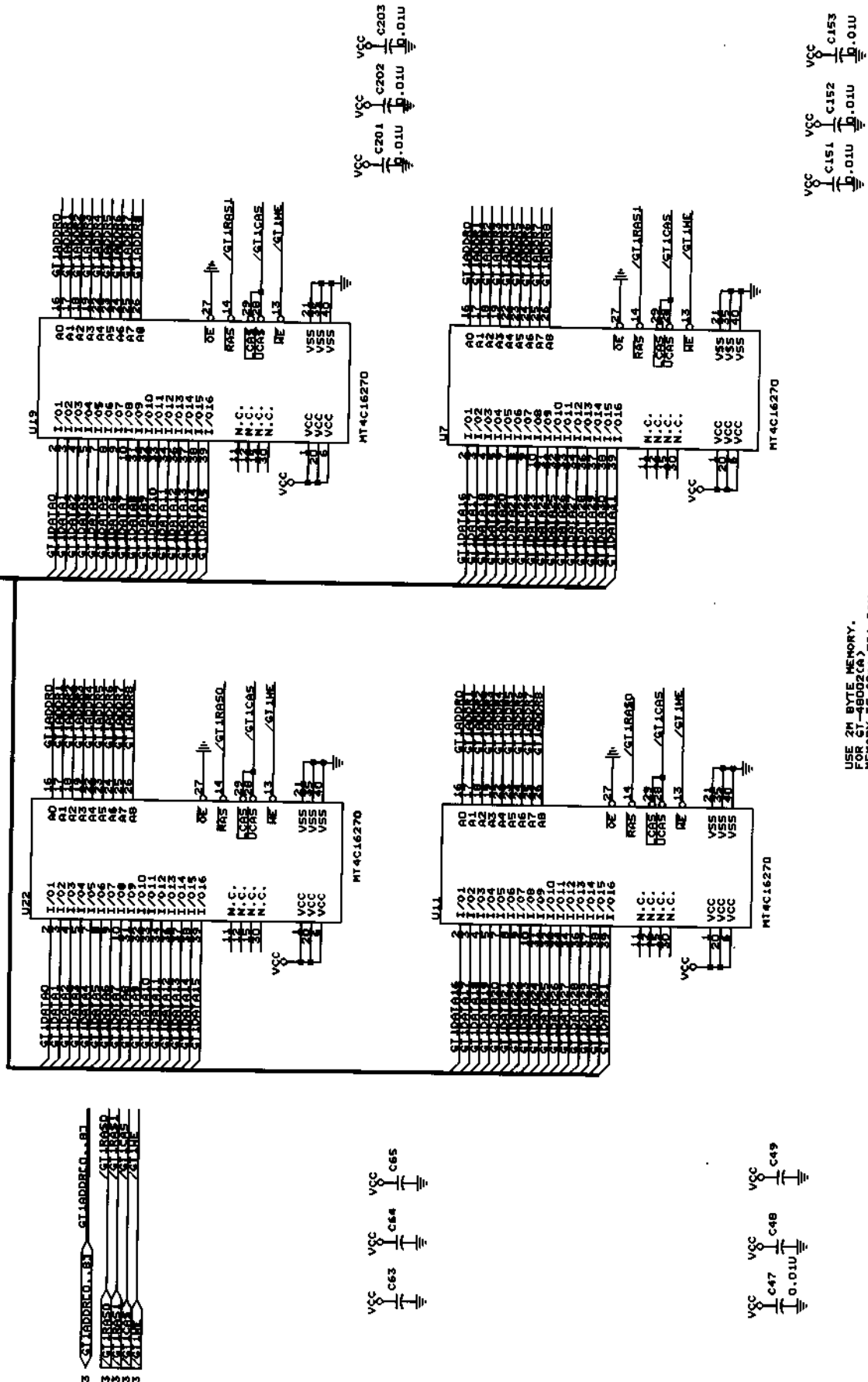
GT-48002A

FOR GT-48002A TEST



FOR GT-48002A

3 <GT-48002A> 311 <GT-48002A> 312



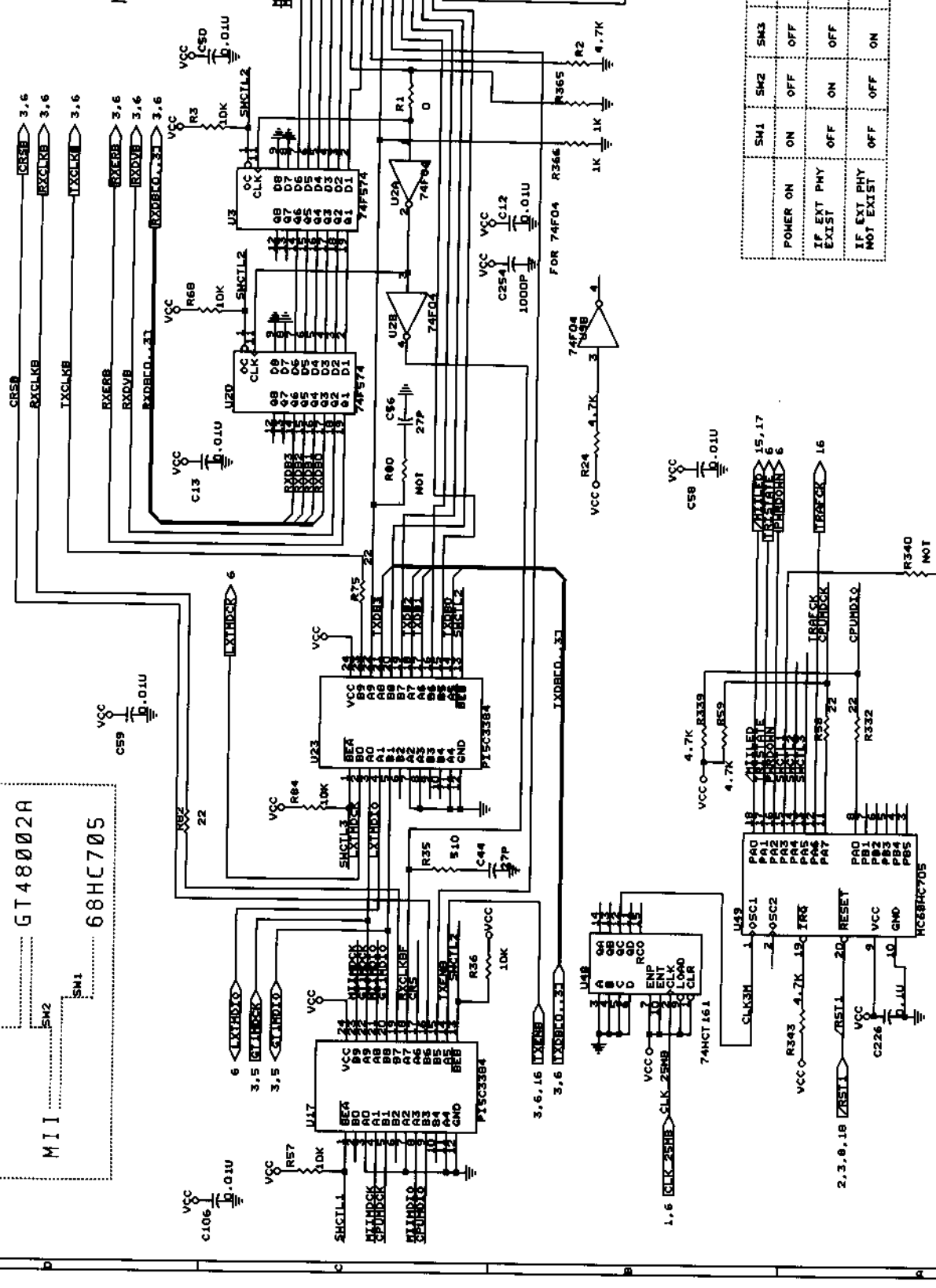
USE 2M BYTE MEMORY.
FOR GT-48002(A)
MEMORY IS 60ns EDO RAM

D-Link Corp.

Doc. No.: 305DES2218--A3-

Approved:	Checked:	Prepared by: ROBERT CHEN
		Issue Date: OCT 12, 1997
Title: ES-221881: DRAM FOR GT-48002A		
Version: A	Size: 2203	Rev: A3
Date: FEBRUARY 9, 1998	Page: 4 of 18	

MII CONNECTOR 40 PINS



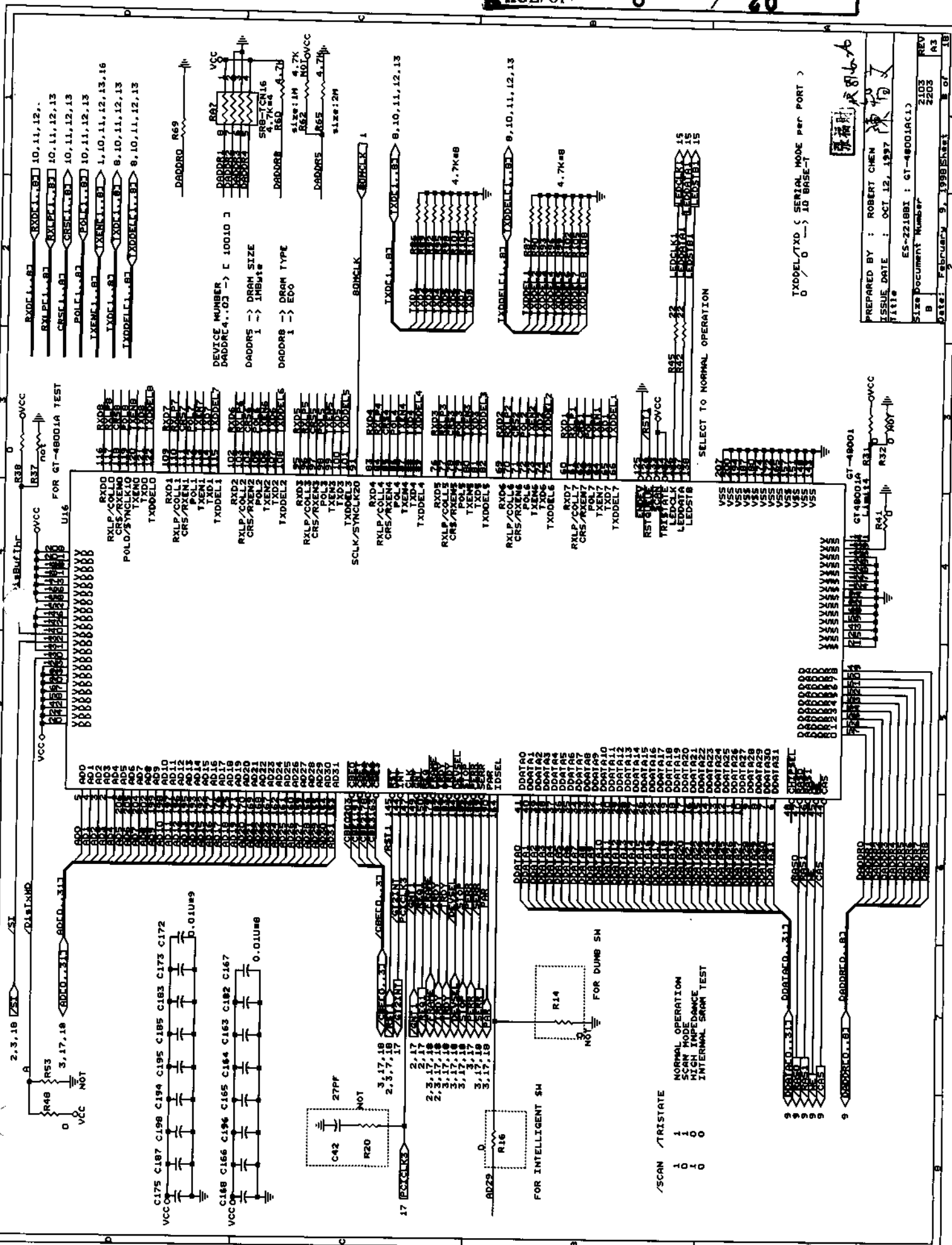
MII CONNECTOR & CONTROL CKT.

POWER ON	SM1	SM2	SM3	MILED	TRISTATE	PHRDOWN
IF EXT PHY EXIST	ON	OFF	OFF	ON	HIGH	HIGH
IF EXT PHY NOT EXIST	OFF	ON	ON	OFF	LOW	LOW



DOC. NO.: 305DES2218-A3-

Approved: Robert Chen
Checked: Robert Chen
Title: ES-2218B1: 100M MII CONN. & CONTROL CKT
Version: 1.0
Date: 1997-10-12
Page: 7 of 18



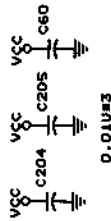
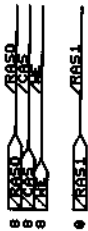
TXDDEL/TXD (SERIAL MODE per PORT)
0 / 0 -- ID BASE-T

PREPARED BY : ROBERT CHEN
ISSUE DATE : OCT 12, 1997
Title :
Size Document Number :
REV : 2103
REV : 2203
REV : 2303
Date: February 9, 1998 Sheet 8 of 18

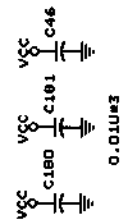
FOR GT-48001A(1)

8 <DADDRQ...> DADDRQ...B7

8 <DATAQ...> DATAQ...317

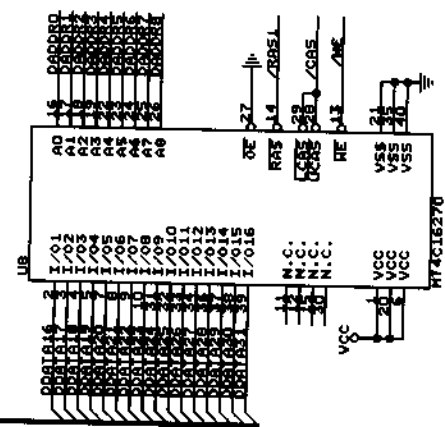
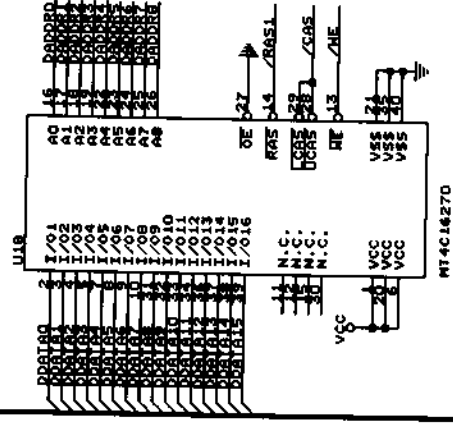


0.01u#3

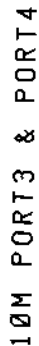


0.01u#3

USE 2M BYTE MEMORY.
FOR GT-48001(A)
MEMORY IS 60ns EDO RAM



<h1>D-Link</h1>		Approved:	Prepared By: ROBERT CHEN
		Checked:	Issue Date: OCT 12, 1997
Doc. No.: 305DES2218---A3-	Version: A	Title: ES-2218BI : DRAM FOR GT-48001A(1)	
Size: 2203 Date: February 3, 1998		Size: 2203 Date: February 3, 1998	



D-Link®

DOC. NO.: 305DES2218--A3-

Approved:

Checked:

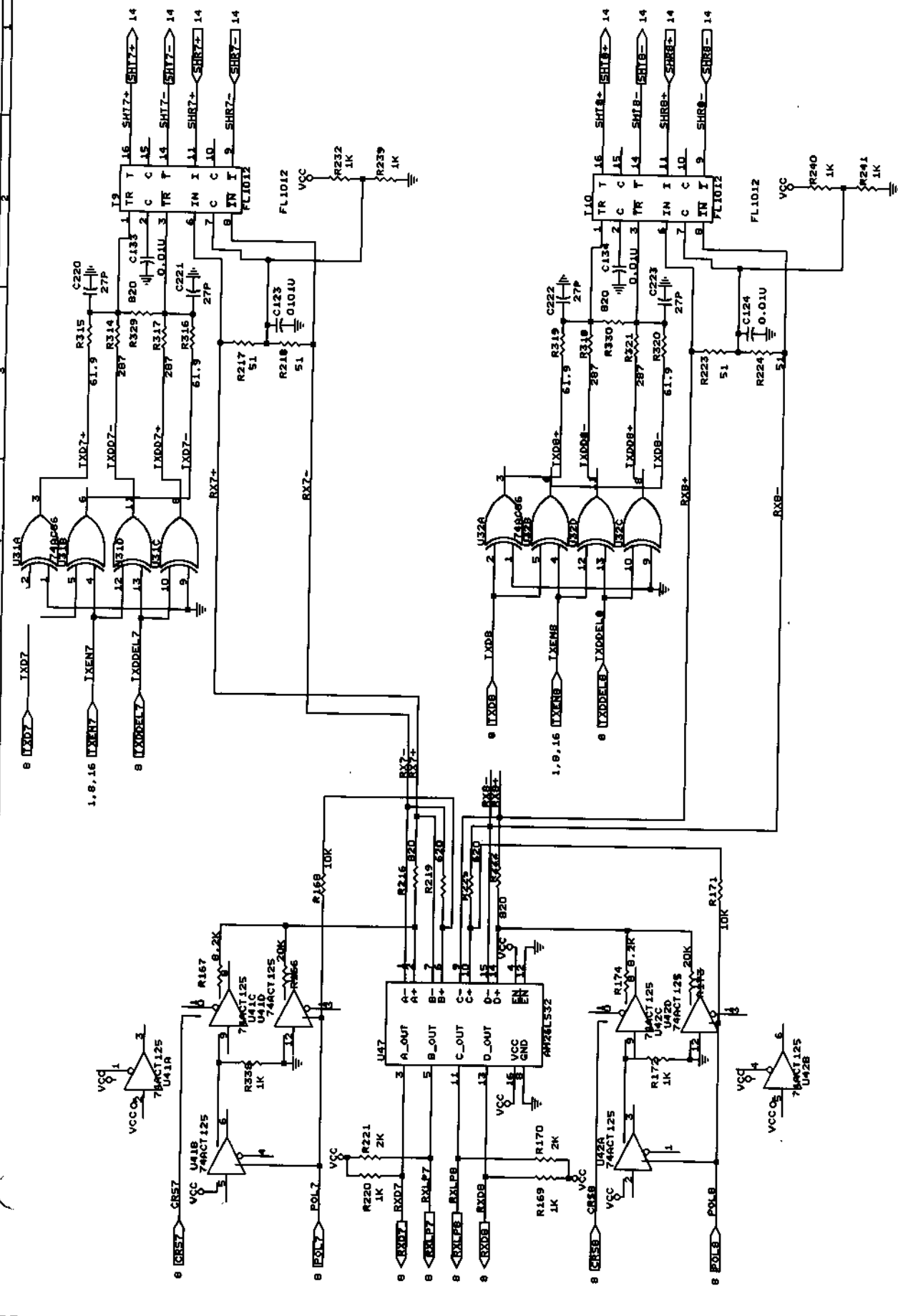
Version:

Document Number

2103

REV

10M PORT9 & PORT10



D-Link Corp.

DOC. NO.: 305DES2218---A3-

Approved: 張福財

Checked: 張福財

Version: A

PREPARED BY: ROBERT CHEN

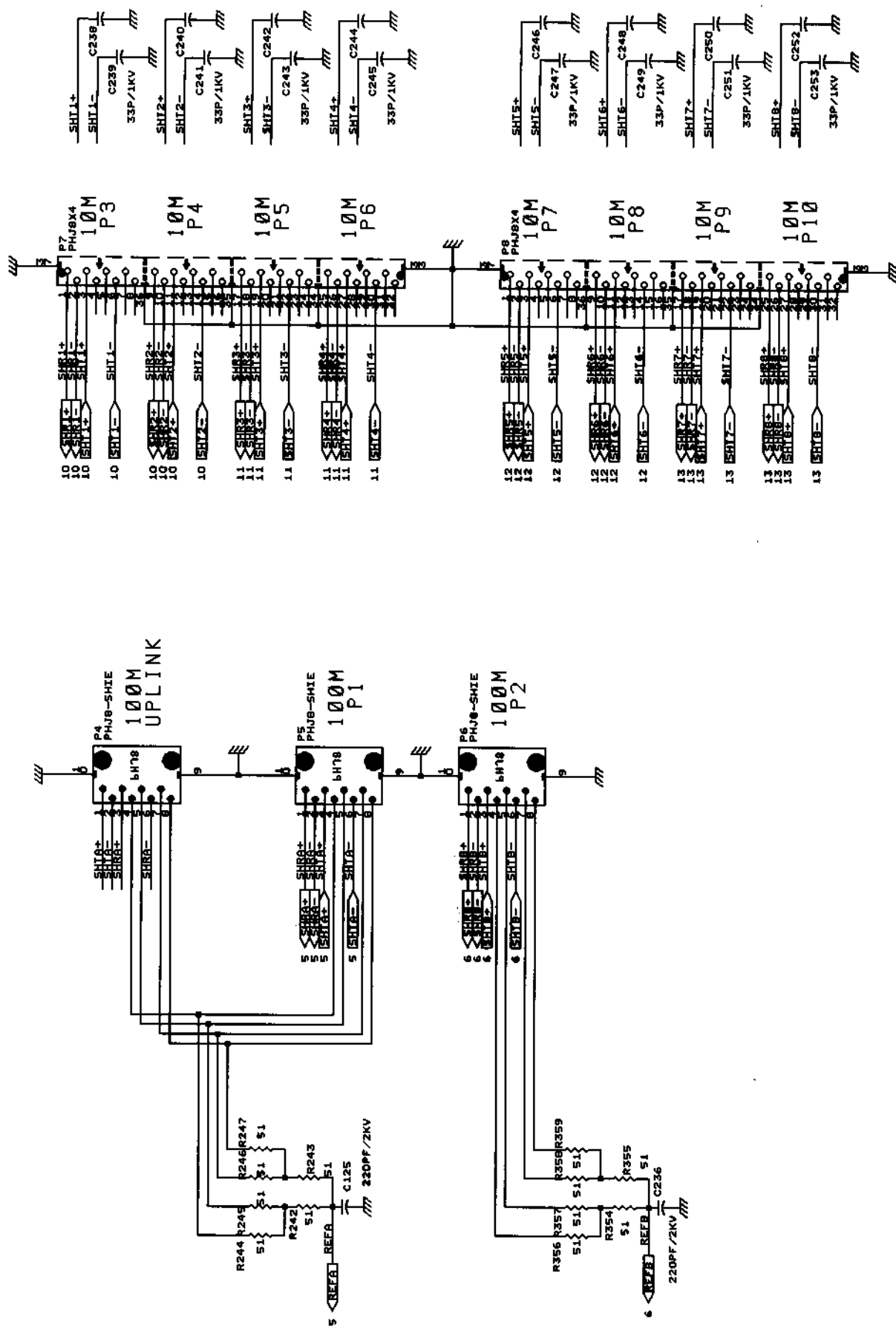
ISSUE DATE: OCT 12, 1997

Title: ES-2218BI: 10M PORT9 & PORT10 CKT

Size: Document Number

REV: 2103, 2203, 2303

Date: February 9, 1998 Sheet 13 of 18

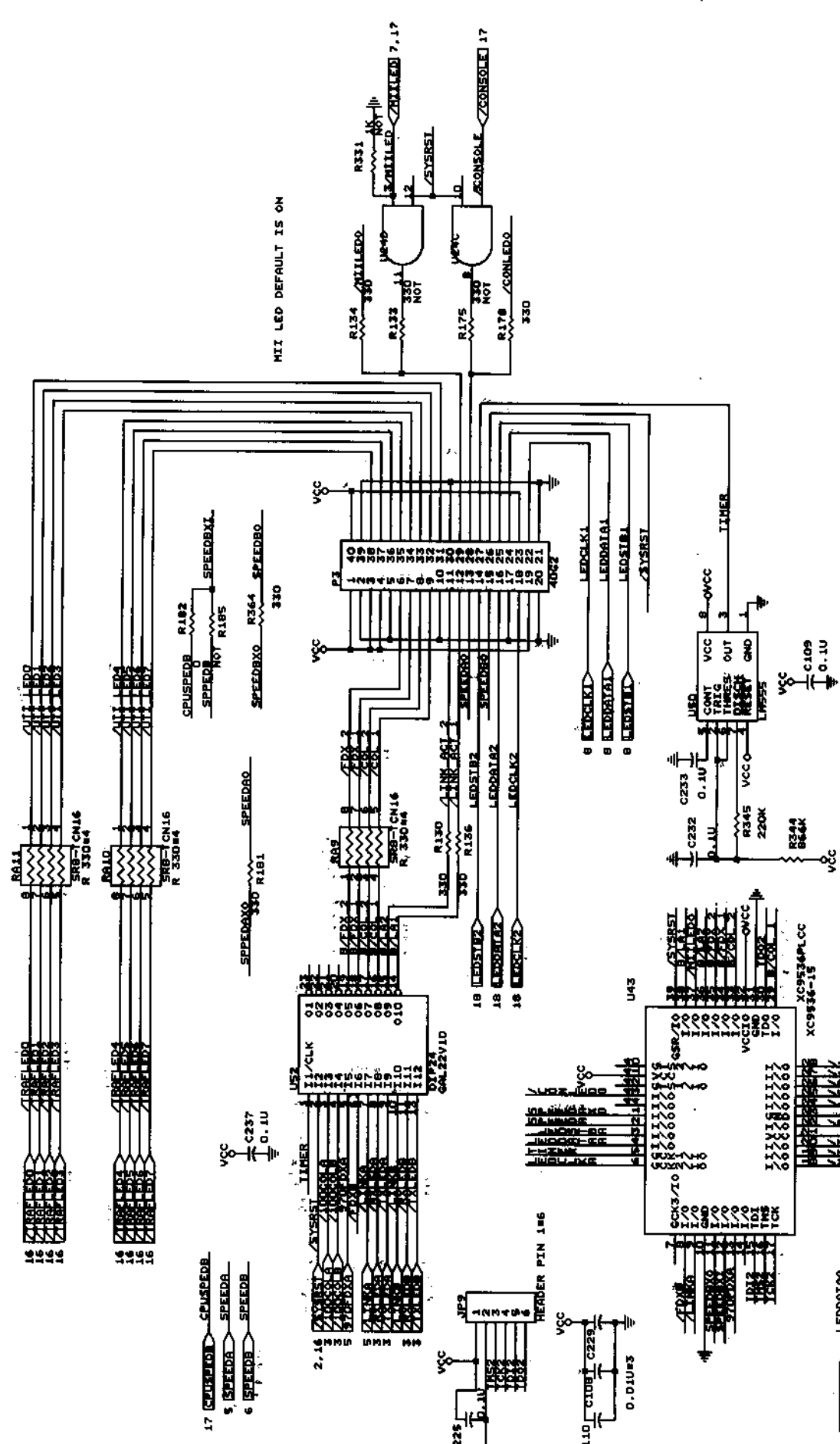


100M & 10M PHONE JACKS

DOC. NO.: 305DES2218---A3-

PREPARED BY : ROBERT CHEN	ES-221681 : BUONE JACQUE
ISSUE DATE : OCT 12, 1997	
Title	

Size	Document Number	REV
B	2103	A3
	2203	
Date:	February 9, 1998	Sheet 14 of 18



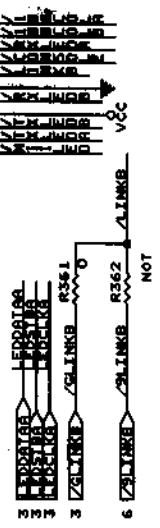
10M PORTS SERIAL LED SIGNALS

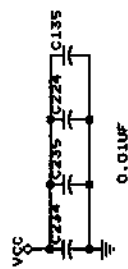
Approved:	Prepared by: ROBERT CHEN	REV
Checked:	Issue Date: OCT 12, 1997	2103
	File: ES-2218BI : LED+ DISPLAY CNT	A3
	Size: Document Number	2203
	Version: A	15 of 18
	Date: FEBRUARY 9, 1998	

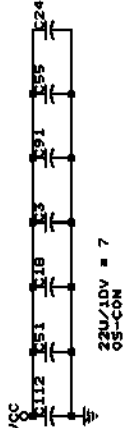
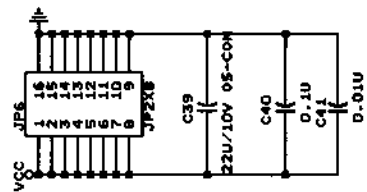
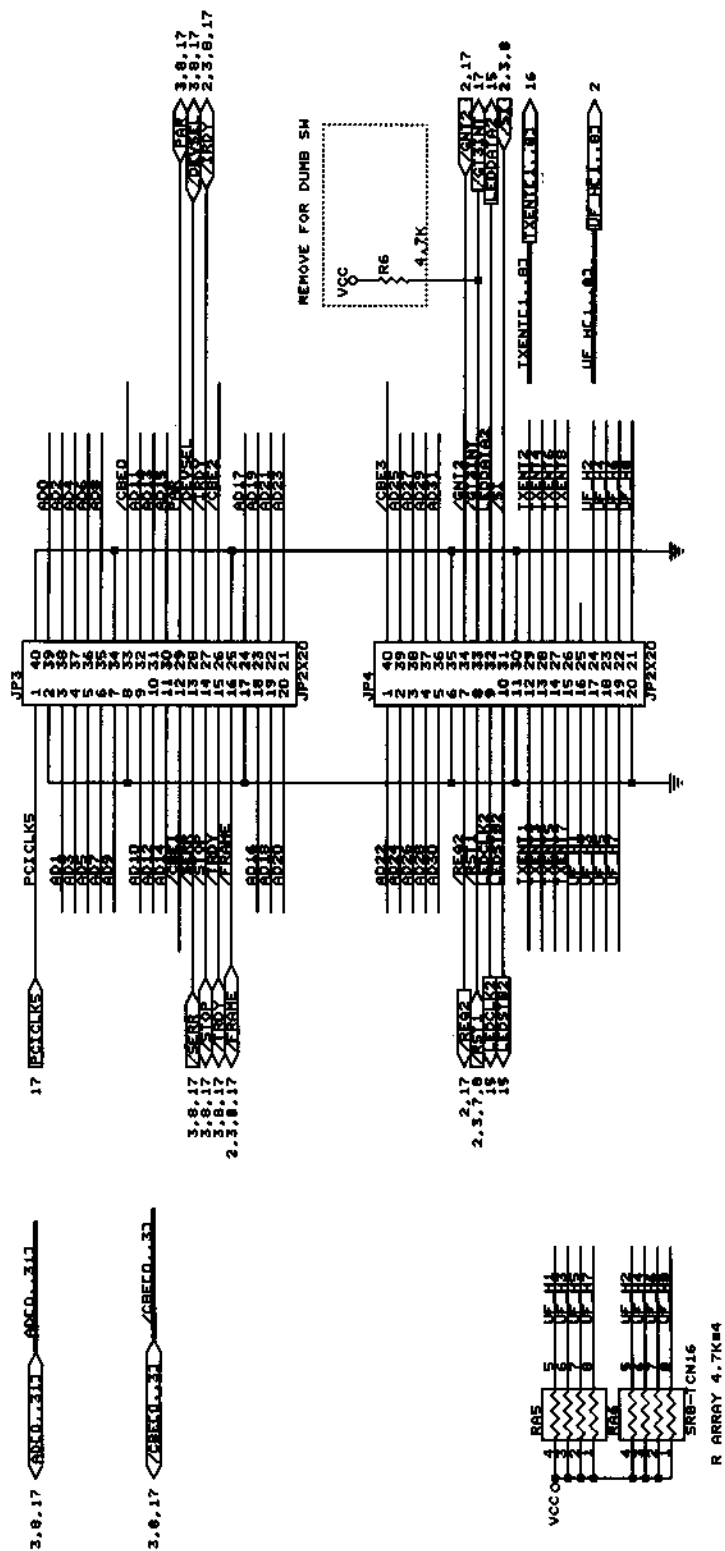
D-Link Corp.

DOC. NO.: 305DES2218---A3-

100M PORTS LED CIRCUIT



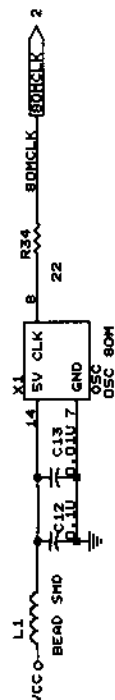




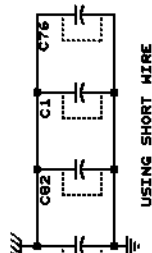
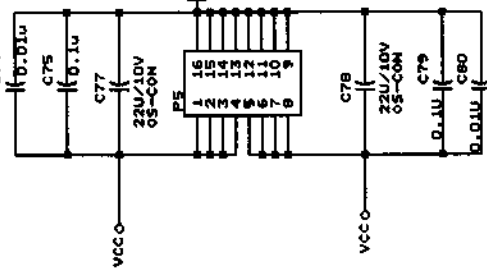
CONN. BETWEEN ES-2218BI & ES-2218TI

D-Link Corp.		Approved: 張福財 Checked: 張福財	PREPARED BY : ROBERT CHEN ISSUE DATE : OCT 12, 1997
DOC. NO.: 305DES2218---A3-	Version: A	ES-2218BI TO ES-2218TI CONN. Size Document Number Date: October 14, 1997 Sheet 18 of 18	REV 2103 2203 A1

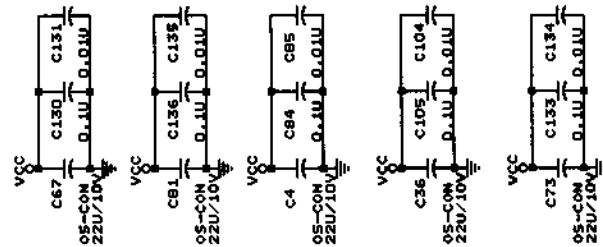
CONN. BETWEEN ES-2218BI & ES-2218TI



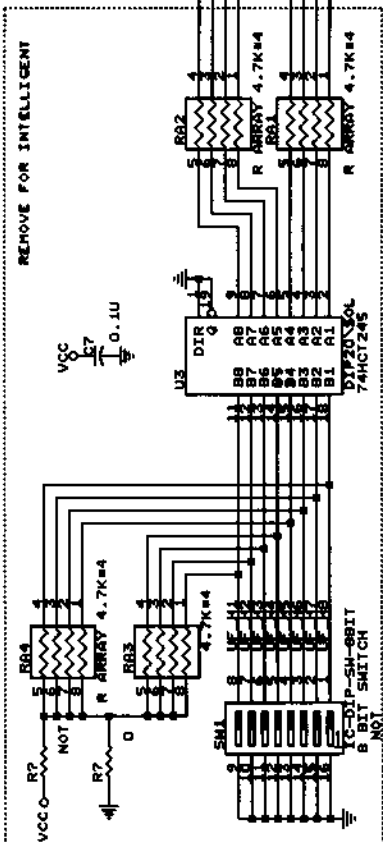
80MHz CLOCK FOR GT-48001A(2)
PLACE AS CLOSE TO GT-48001(2) AS POSSIBLE



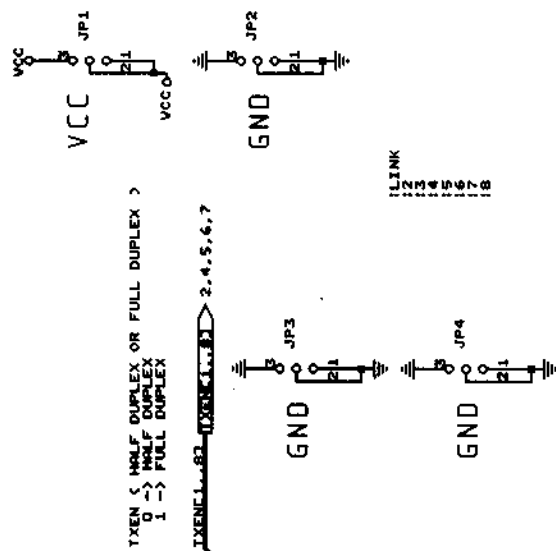
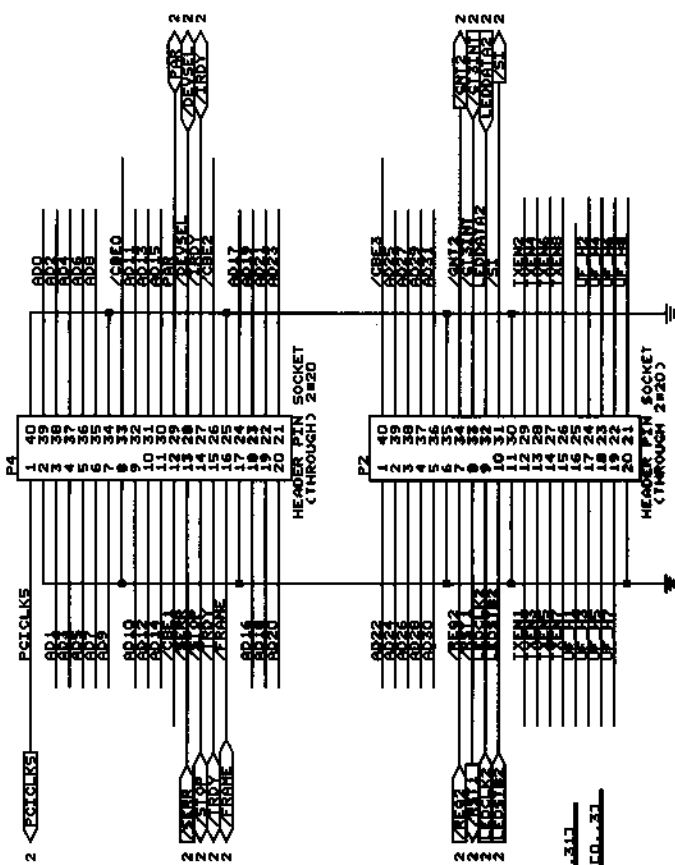
USING SHORT WIRE



OFF = FULL DUPLEX
ON = HALF DUPLEX



REMOVE FOR INTELLIGENT



TXEN < HALF DUPLEX OR FULL DUPLEX >
0 -> HALF DUPLEX
1 -> FULL DUPLEX

LINK
1 2 3 4 5 6 7 8

DIP SW FOR GT-48001A

D-Link Corp.

DOC. NO.: 305DES2218--A3-

Approved:

Checked:

Version:

Rev:

Prepared by:

Issue Date:

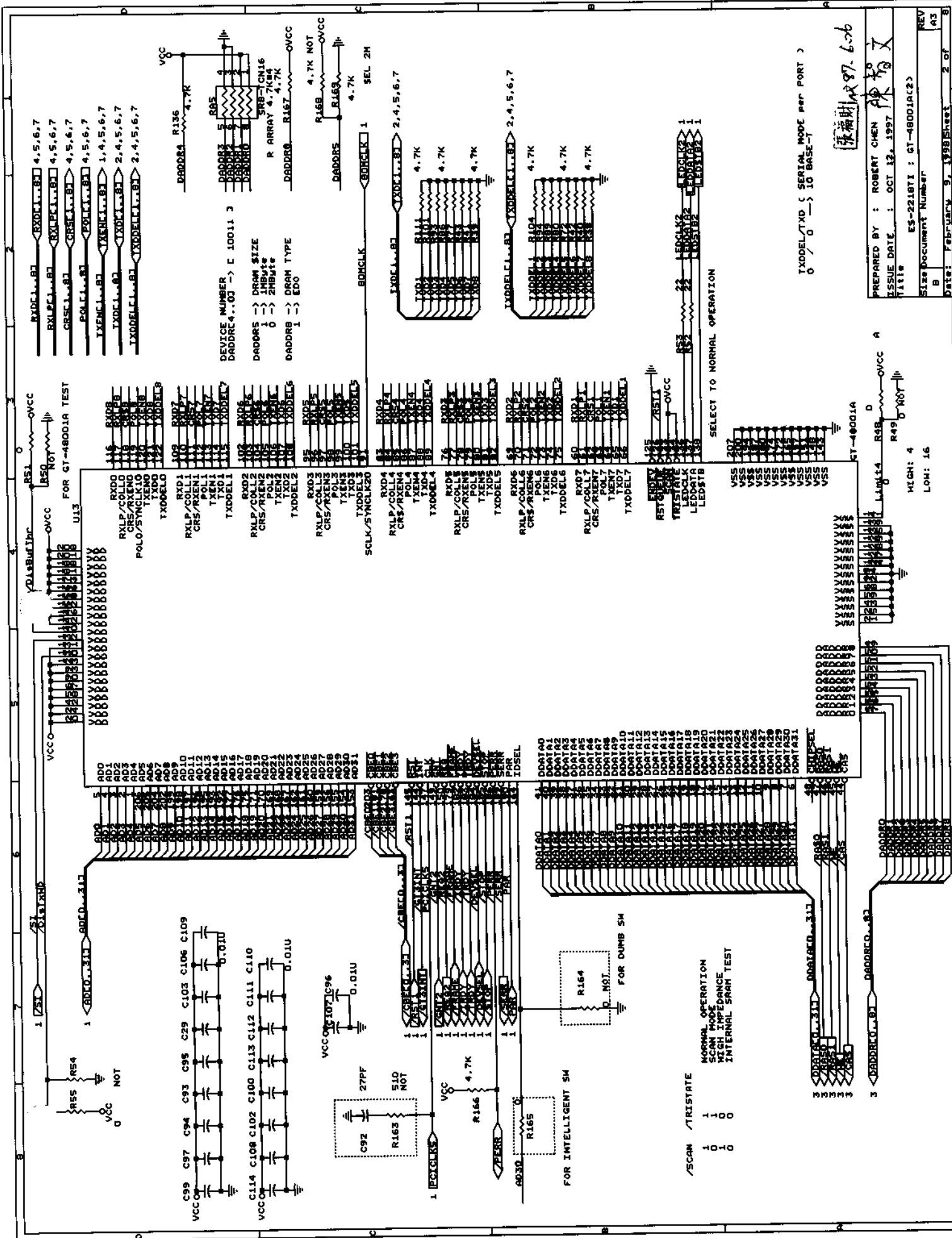
ES-2218TI to ES-2218BI CONN.

Size Document Number

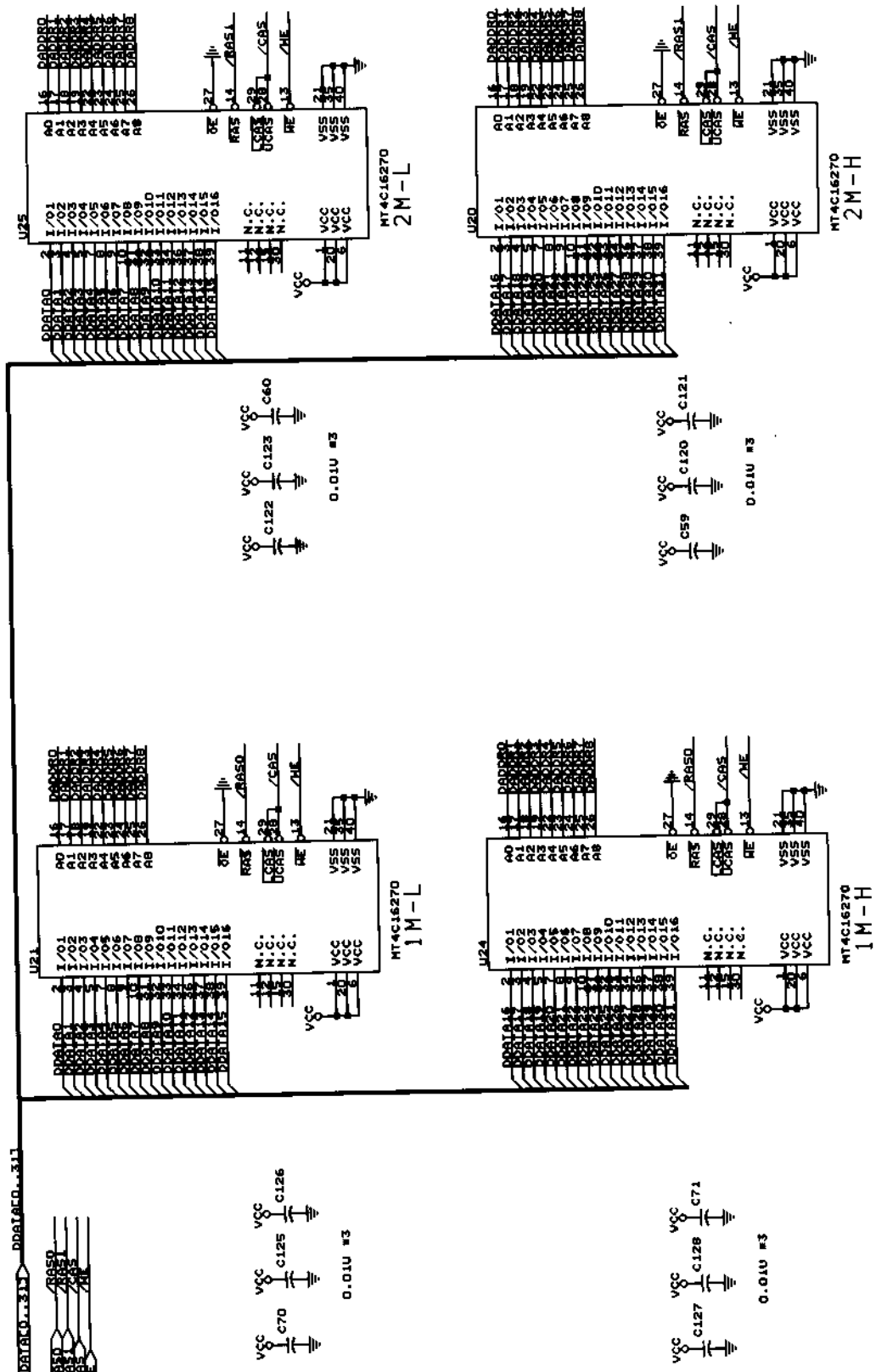
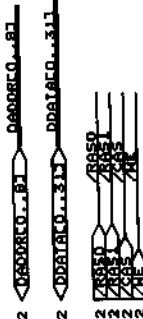
Date:

Page:

1 of 8

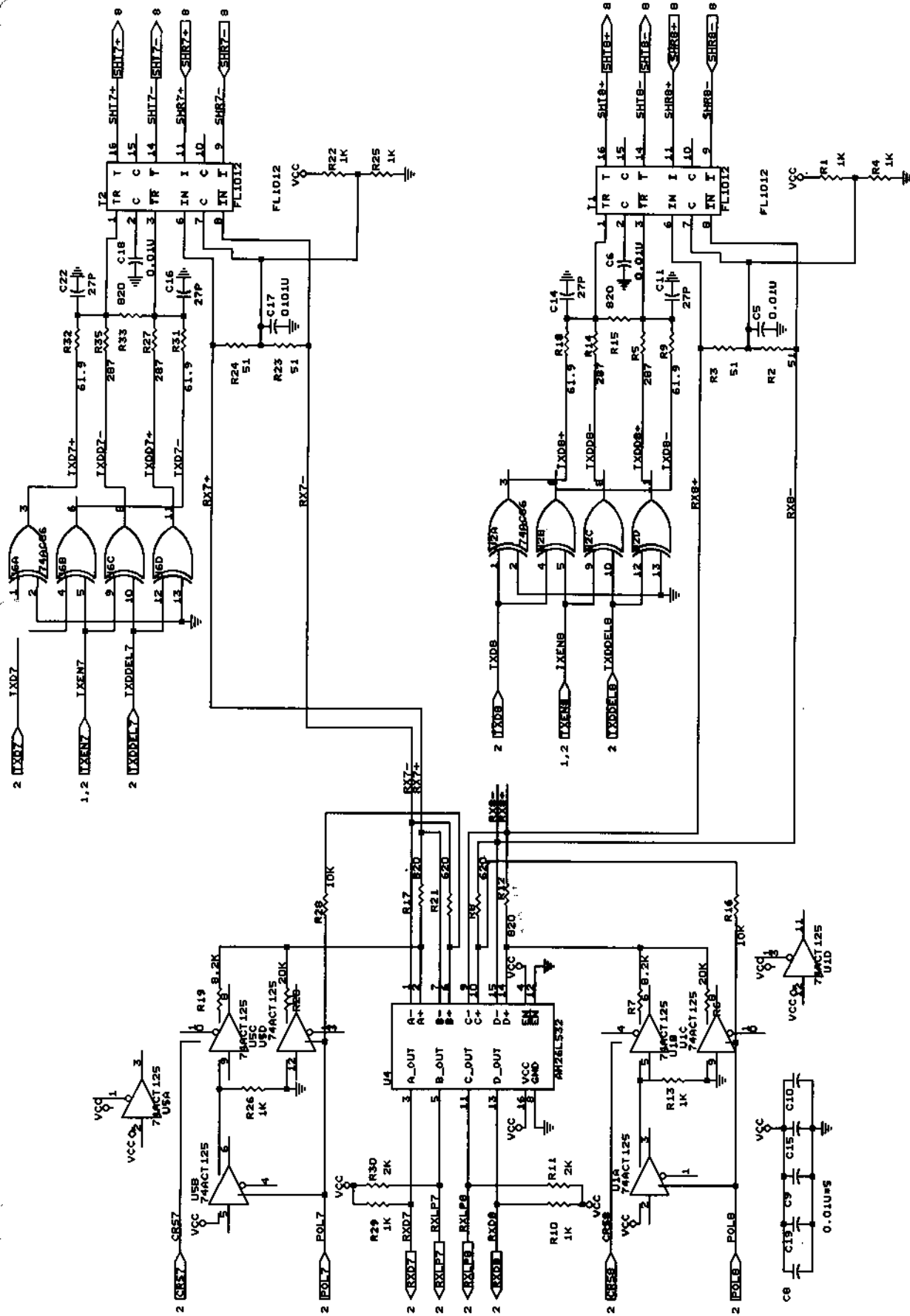


FOR GT-48001A(2)



USE 2M BYTE MEMORY.
FOR GT-48001(A)
MEMORY IS 60ns EDO RAM

D-Link Corp.		Approved: 张福财	Prepared by: ROBERT CHEN
		Checked: 张福财	Issue Date: OCT 12, 1997
Doc. No.: 305DES2218---A3-		Version: A	Title: ES-2218T1: DRAM FOR GT-48001A(2)
Date: February 9, 1998		Size: 3.07	Rev: A3



10M PORT17 & PORT18

D-Link

Approved: 張福財

Checked: 張福財

Prepared by: ROBERT CHEN

Issue Date: OCT 12, 1997

DOC. NO.: 305DES2218---A3-

Version: A

Size: 7 of 7

REV

A3

25/26

100M & 10M PHONE JACKS



DOC. NO.: 305DES2218---A3-

Approved:	Prepared by: ROBERT CHEN	REV
Checked:	Issue Date: OCT 12, 1997	A3
	Title: ES-2218T1 : PHONE JACKS	
	Size Document Number	
	Version: 4	
	Date: February 9, 1998	8 of 8

