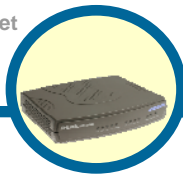


D-Link

Quick Installation Guide

This product can be set up using Internet Explorer or Netscape Navigator, 6.x or above, with Javascript enabled



DVG-6004S
FXO VoIP Router

Before You Begin

You must have at least the following:

- A subscription with bundled service provider included in this package
- A Computer with a CD-ROM drive and an Ethernet port running a Windows
- Ethernet based broadband modem

Check Your Package Contents

These are the items included with your purchase:

If any of the below items are missing, please contact your reseller.



DVG-6004S FXO VoIP Router



Phone Cord



CAT5 Ethernet Cable



CD-ROM



12V DC Power Adapter



Using a power supply with a different voltage rating will damage this product and void the warranty

1

Hardware Overview


Front Panel



Power LED	Indicates the unit is powered on.
Run	The Run LED will flash when performing a self-test/booting up and light solid green if the self-test or bootup fails.
Alarm	The Alarm LED will light solid red if the self-test or bootup fails. The Alarm will flash red when the system is registering with the service provider or register fails.
WAN LED	When a connection is established the 10 or 100 LED will light up solid. The LED will blink to indicate activity. If the 10 or 100 LED does not light up when a cable is connected, verify the cable connections and make sure your devices are powered on.
LAN LEDs	When a connection is established the 10 or 100 LED will light up solid on the appropriate port. The LEDs will blink to indicate activity. If the 10 or 100 LED does not light up when a cable is connected, verify the cable connections and make sure your devices are powered on.
Line LEDs	Light on means the line is in use (off-hook), and vice versa.

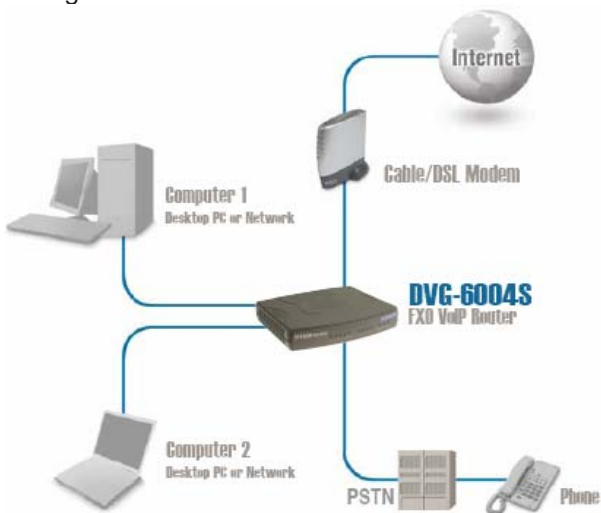
Rear Panel



Line Ports	Connect to your original telephone line on the wall jack with RJ-11 cable.
LAN Port	Connect to your Ethernet enabled computers using Ethernet cabling.
WAN Port	Connects to your broadband modem using an Ethernet cable.
Reset	This is used to reset the unit to the factory default settings.
DC 12V	<p>The power adapter attaches here.</p> <div data-bbox="260 776 954 891" style="border: 2px solid blue; border-radius: 15px; background-color: #ffffcc; padding: 10px;"> Using a power supply with a different voltage rating will damage this product.</div>

2 Connecting the DVG-6004S directly to a Modem and Computer

If your computer connects directly to a DSL or Cable modem and does not connect to a router, follow the steps below to install your DVG-6004S. For any other configuration, please refer to the user manual located on the CD-ROM. After the steps are completed, your setup should look similar to the diagram below.



- Turn off your Computer.
- Disconnect the power to your Cable/DSL Modem (Unplug or turn off the power switch).
- Unplug the existing Ethernet cable that is connected to your Cable/DSL Modem's LAN or Ethernet port. Leave the other end of this cable attached to your PC.
- Plug the Ethernet cable connector that you just removed from the modem into one of the four LAN ports on the back of the DVG-6004S. The other end remains attached to the PC.



2

Connecting the DVG-6004S directly to a Modem and Computer (continued)

e. Attach one end of the Ethernet Cable provided in this package to the LAN or Ethernet Port on the Cable/DSL Modem.

f. Attach the other end of the provided Ethernet Cable to the WAN Port of the DVG-6004S.



g. Attach one end of the provided phone cable to your original telephone line on the wall jack.

h. Attach the other end of the phone cable to the line port on the rear panel of the DVG-6004S.



i. Reconnect the power to the Cable/DSL Modem (Plug in or turn on the power switch).

j. Connect the Power Adapter to the Power Connector on the DVG-6004S.

k. Connect the other end of the Power Adapter to an available electrical outlet (Wall Socket or Surge Protector).



l. Restart your PC.

- If your ISP registers your computer's MAC address, see the section labeled *MAC Cloning* for Connections in the user manual on the CD-ROM.
- **PPPoE Users**, please continue to the next page for additional configuration steps.

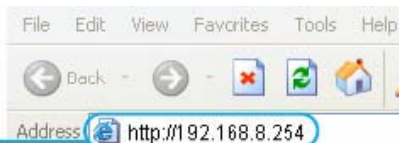
Hardware configuration is complete! If your VoIP service is already activated, you can make phone calls now.

3

PPPoE Configuration

Some Internet Service providers use PPPoE as their method of connecting clients. If you have a PPPoE connection, you must follow the steps below to complete the configuration of your hardware. If you are unsure of your connection type or do not know your username and password, please check with your Internet Service Provider.

Open your Web browser and type <http://192.168.8.254> into the URL address box. Press the Enter or Return Key



Click **OK** to enter Web Site.



Click **Network Settings**.



Click **PPPoE**.

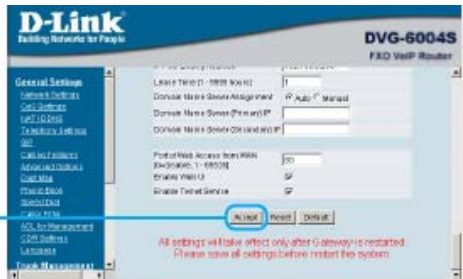
Enter **PPPoE Account**, **Password** and **Confirm Password**.



3

PPPoE Configuration (continued)

Click **Accept** at the bottom of this page.



Click **System Operation** at left menu.

Select **Save Settings and Restart**.

Click **Accept**.



Once the unit reboots you will see the message. Check to see if the status LED light goes from blinking green to solid green on the front panel of the DVG-6004S.



The information found on the **Device Information** page is necessary for VoIP service registration