



DAP-1150

Wireless Access Point Supporting Router Mode

BEFORE YOU BEGIN

Delivery Package

- Access point DAP-1150
- Power adapter
- Straight-through Ethernet cable (CAT 5E)
- CD-ROM with “*User Manual*” and “*Quick Installation Guide*”
- “*Quick Installation Guide*” (brochure)

If any of the items are missing, please contact your reseller.

! Using a power supply with a different voltage rating than the one included will cause damage and void the warranty for this product.

Default Settings

IP address of access point	192.168.0.50
Username (login)	admin
Password	admin
Name of wireless network (SSID)	DAP-1150

System Requirements and Equipment

- A computer with any operating system that supports a web browser.
- A web browser to access the web-based interface of the access point: Windows Internet Explorer, Mozilla Firefox, or Opera.
- A NIC (Ethernet or Wi-Fi adapter) to connect to the access point.
- An 802.11b, g or n Wi-Fi adapter to create a wireless network.

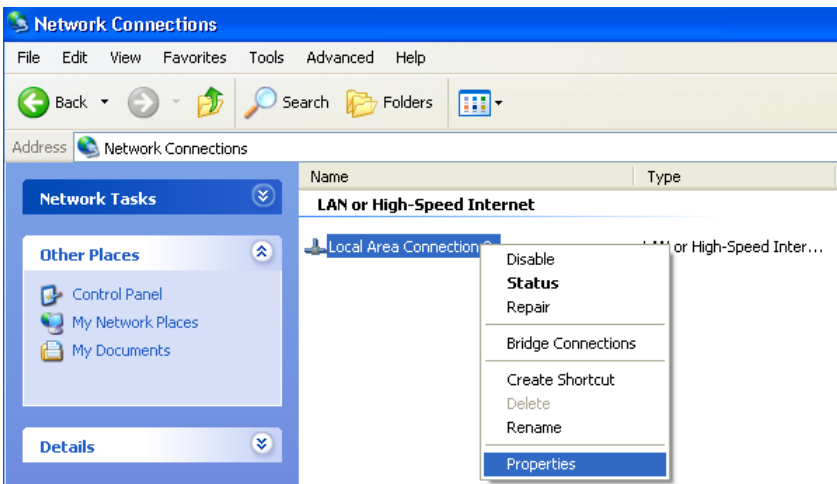
CONNECTING TO PC (OS WINDOWS XP)

PC with Ethernet Adapter

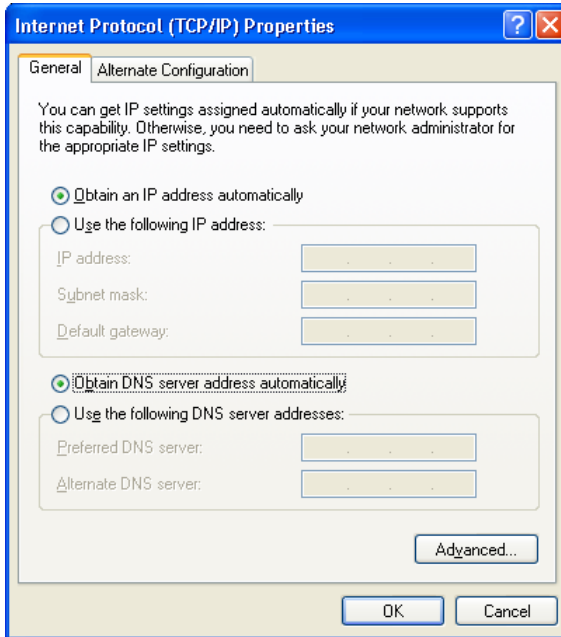
1. Make sure that your PC is powered off.
2. Connect an Ethernet cable between the LAN port located on the back panel of the access point and the Ethernet port of your PC.
3. Connect the power cord to the power connector port on the back panel of the access point, then plug the power adapter into an electrical outlet or power strip.
4. Turn on your PC and wait until your operating system is completely loaded.

Now you should configure your PC to obtain an IP address automatically (as DHCP client).

1. Click the **Start** button and proceed to the **Control Panel > Network and Internet Connections > Network Connections** window.
2. In the **Network Connections** window, right-click the relevant **Local Area Connection** icon and select the **Properties** line in the menu displayed.



3. In the **Local Area Connection Properties** window, on the **General** tab, in the **This connection uses the following items** section, select the **Internet Protocol (TCP/IP)** line. Click the **Properties** button.
4. Select the **Obtain an IP address automatically** radio button. Click the **OK** button.



Click the **OK** button. Now your computer is configured to obtain an IP address automatically.

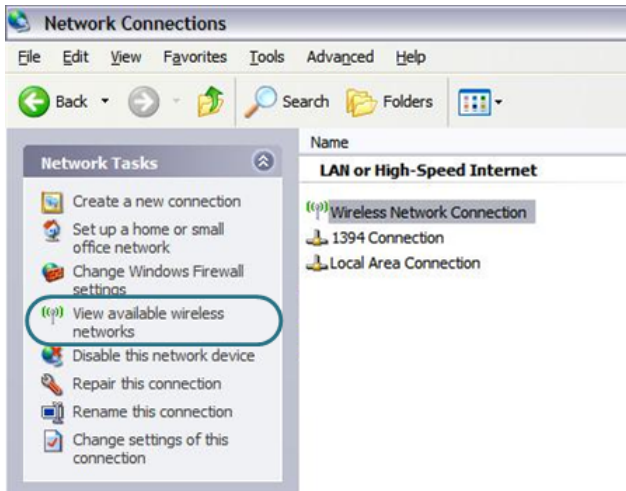
PC with Wi-Fi Adapter

1. Connect the power cord to the power connector port on the back panel of the access point, then plug the power adapter into an electrical outlet or power strip.
2. Turn on your PC and wait until your operating system is completely loaded.

3. Turn on your Wi-Fi adapter. As a rule, modern notebooks with built-in wireless NICs are equipped with a button or switch that turns on/off the wireless adapter (refer to your PC documents). If your PC is equipped with a pluggable wireless NIC, install the software provided with your Wi-Fi adapter.

Now you should configure your Wi-Fi adapter.

1. Click the **Start** button and proceed to the **Control Panel > Network and Internet Connections > Network Connections** window.
2. Select the icon of the wireless connection and make sure that your Wi-Fi adapter is on.



3. Search for available wireless networks.
4. In the opened **Wireless Network Connection** window, select the needed wireless network (**DAP-1150**) and click the **Connect** button.

After that the **Wireless Network Connection Status** window appears.

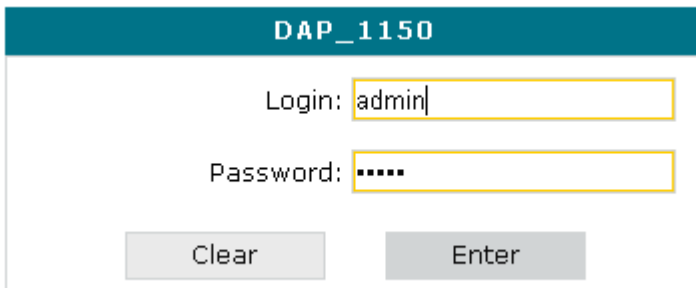
CONFIGURING ACCESS POINT

Connecting to Web-based Interface

1. Start a web browser.
2. In the address bar of the web browser, enter the IP address of the access point (by default, the following IP address is specified: **192.168.0.50**). Press the **Enter** key.

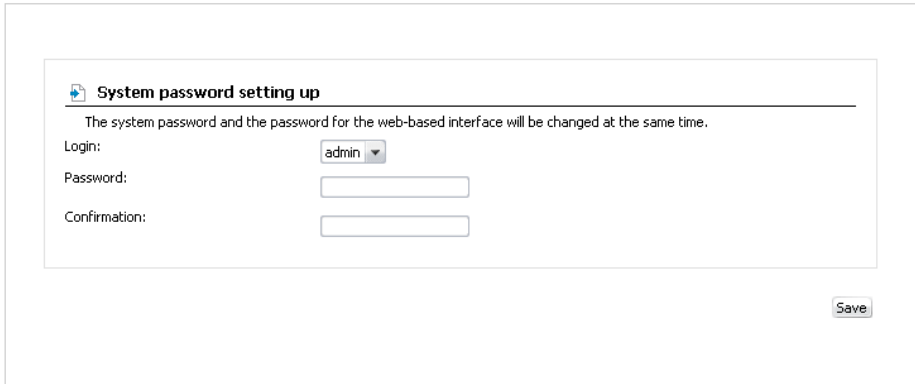


3. On the opened page, enter the username (login) and password for the administrator account (by default, the following username and password are specified: **admin**, **admin**). Then click the **Enter** button.

A screenshot of a login page titled "DAP_1150". The page has a teal header with the text "DAP_1150". Below the header, there are two input fields: "Login:" with the text "admin" and "Password:" with "*****". Below the input fields are two buttons: "Clear" and "Enter".

If the error “*The page cannot be displayed*” (or “*Unable to display the page*”/“*Could not connect to remote server*”) occurs upon connecting to the web-based interface of the access point, make sure that you have properly connected the device to your computer.

Right after the first access to the web-based interface you are forwarded to the page for changing the administrator password specified by default.



System password setting up

The system password and the password for the web-based interface will be changed at the same time.

Login:

Password:

Confirmation:

Enter the new password in the **Password** and **Confirmation** fields. Then click the **Save** button.



Remember or write down the new password for the administrator account. In case of losing the new password, you can access the web-based interface of the access point only after restoring the factory default settings via the hardware Reset button. This procedure wipes out all settings that you have configured for your device.

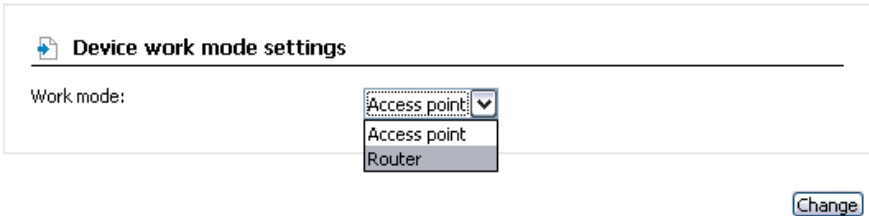
After successful registration the system statistics page opens. The page displays general information on the access point and its software.

The web-based interface of the access point is bilingual (English/Russian). Select a needed language from the menu displayed when the mouse pointer is over the **Language** caption. You can change the language of the web-based interface in any menu item.

Selecting Operating Mode

By default, the access point mode is specified for the device. If you need to use the device as a router, proceed to the **Advanced / Device mode** page, select the **Router** value from the **Work mode** list, and click the **Change** button.

Advanced / Device mode



The screenshot shows a web interface titled "Device work mode settings". Below the title is a horizontal line. Underneath, the text "Work mode:" is followed by a dropdown menu. The dropdown menu is open, showing three options: "Access point" (which is highlighted with a blue background and a small downward arrow), "Access point", and "Router". To the right of the dropdown menu is a button labeled "Change".

Then select the **Save&Reboot** value from the top-page menu displayed when the mouse pointer is over the **System** caption and wait until the device is rebooted.

! When the device is switched to the router mode, you cannot connect to it via a wired connection.

Configuring Wireless Network

By default, the wireless network of the access point is open (it requires no password to access it). To avoid unauthorized access to your wireless local area network, change the default settings of the access point.

Example of Wireless Settings

1. Go to the **Wi-Fi / Security settings** page.
2. Select the **WPA-PSK** value from the **Network Authentication** drop-down list.

Wi-Fi / Security settings

Network Authentication:

Encryption Key PSK:

WPA Encryption settings

WPA Encryption:

WPA renewal:

[Change](#)

3. Enter a key (a password that will be used to access your wireless network) in the **Encryption Key PSK** field. Use digits and Latin characters.
4. Select the **AES** value from the **WPA Encryption** drop-down list.
5. Click the **Change** button.



If you perform initial configuration of the access point via Wi-Fi connection, note that immediately after changing the wireless default settings you will need to reconfigure the wireless connection using the newly specified settings.

Configuring Local Area Network

1. Go to the **Net / Connections** page and select the **LAN** connection. If needed, change the IP address and subnet mask for the LAN interface of the access point in the **IP Address** and **Netmask** fields of the **IP settings** section. Then click the **Save** button.

IP settings

Internet Protocol settings

IP Address: . . .

Netmask: . . .

2. By default, the DHCP server of the device is enabled. On the **DHCP server** tab you can change the parameters of the DHCP server. As a rule, the DHCP server should be disabled when the device is used in the access point mode (select the **Disable** value from the **Mode** drop-down list).

Main | **DHCP server** | Static DHCP

Mode: ▼

Start IP: . . .

End IP: . . .

Lease time (min):

3. After specifying the DHCP server settings, click the **Save** button.

Configuring Connection to the Internet (Router Mode Only)



You should configure your WAN connection in accordance with data provided by your Internet service provider (ISP). Make sure that you have obtained all necessary information prior to configuring your connection. Otherwise contact your ISP.

PPPoE or IPoE WAN Connection

1. Go to the **Net / Connections** page and click the **Add** button.
2. In the **General settings** section, select a needed value from the **Connection Type** drop-down list.
3. In the **Physical layer** section, select the value corresponding to the LAN port of the access point (**WAN**) from the **Physical interface** drop-down list.
4. If your ISP uses MAC address binding, enter the address registered by your ISP upon concluding the agreement in the **MAC** field.
5. *For Static IP connection (IPoE)*: fill in the **IP Address**, **Netmask**, **Gateway IP Address**, and **Primary DNS server** fields.
6. *For Dynamic IP connection (IPoE)*: select the **Obtain an IP address automatically** and **Obtain DNS server addresses automatically** checkboxes.
7. *For PPPoE connection*: enter authorization data provided by your ISP (the username (login) in the **PPP Username** field and the password in the **Password** and **Password confirmation** fields), or select the **Without authorization** checkbox if authorization is not required.
8. If needed, fill in other fields on the page in accordance with data provided by the ISP.
9. Click the **Save** button.

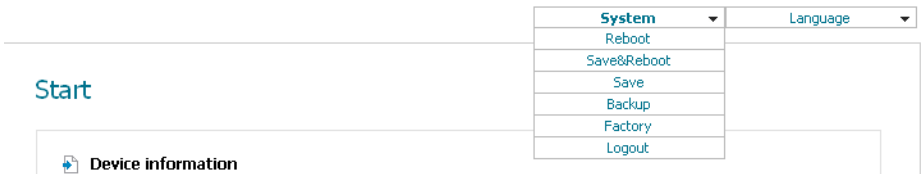
PPTP or L2TP WAN Connection

1. Go to the **Net / Connections** page and click the **Add** button.
2. In the **General settings** section, select the **IPoE** value from the **Connection Type** drop-down list.
3. In the **Physical layer** section, select the value corresponding to the LAN port of the access point (**WAN**) from the **Physical interface** drop-down list.
4. If your ISP uses MAC address binding, enter the address registered by your ISP upon concluding the agreement in the **MAC** field.
5. *For Static IP connection:* fill in the **IP Address**, **Netmask**, **Gateway IP Address**, and **Primary DNS server** fields.
6. *For Dynamic IP connection:* select the **Obtain an IP address automatically** and **Obtain DNS server addresses automatically** checkboxes.
7. Click the **Save** button.
8. On the **Net / Connections** page, click the **Add** button.
9. In the **General settings** section, select a needed value (**PPTP** or **L2TP**) from the **Connection Type** drop-down list.
10. In the **Physical layer** section, select the value corresponding to the previously created IPoE connection from the **Physical interface** drop-down list.
11. Fill in other fields on the page in accordance with data provided by the ISP.
12. Click the **Save** button.
13. On the **Net / Connections** page, select the choice of the **Default gateway** radio button corresponding to the new PPTP or L2TP WAN connection.

Saving Settings to Non-volatile Memory

In order to avoid losing the new settings upon hardware reboot (accidental or intentional power-off of the device), it is recommended to save the settings to the non-volatile memory of the access point.

Click the **Save&Reboot** line in the top-page menu displayed when the mouse pointer is over the **System** caption.



Wait until the access point is rebooted. Now you can use it to access the Internet or access the web-based interface of the access point to configure additional parameters (for detailed description of every page of the web-based interface, see the “*User Manual*” document).

TECHNICAL SUPPORT

You can find software updates and user documentation on our website.

D-Link provides its customers with free support within the product's warranty period.

Customers can contact the technical support group by phone or by e-mail/Internet.

FOR TELEPHONE NUMBERS AND ADDRESSES OF D-LINK OFFICES WORLDWIDE VISIT

<http://www.dlink.com/corporate/worldwideoffices/>