



**Firmware Version:** 4.6.1.1\_RU  
C1

**Published Date:** 2017-11-06

Copyright © 2017

### **Copyright Notice**

This publication, including all photographs, illustrations and software, is protected under international copyright laws, with all rights reserved. Neither this manual, nor any of the material contained herein, may be reproduced without written consent of the author.

### **Disclaimer**

The information in this document is subject to change without notice. The manufacturer makes no representations or warranties with respect to the contents hereof and specifically disclaim any implied warranties of merchantability or fitness for any particular purpose. The manufacturer reserves the right to revise this publication and to make changes from time to time in the content hereof without obligation of the manufacturer to notify any person of such revision or changes.

### **Limitations of Liability**

UNDER NO CIRCUMSTANCES SHALL D-LINK OR ITS SUPPLIERS BE LIABLE FOR DAMAGES OF ANY CHARACTER (E.G. DAMAGES FOR LOSS OF PROFIT, SOFTWARE RESTORATION, WORK STOPPAGE, LOSS OF SAVED DATA OR ANY OTHER COMMERCIAL DAMAGES OR LOSSES) RESULTING FROM THE APPLICATION OR IMPROPER USE OF THE D-LINK PRODUCT OR FAILURE OF THE PRODUCT, EVEN IF D-LINK IS INFORMED OF THE POSSIBILITY OF SUCH DAMAGES. FURTHERMORE, D-LINK WILL NOT BE LIABLE FOR THIRD-PARTY CLAIMS AGAINST CUSTOMER FOR LOSSES OR DAMAGES. D-LINK WILL IN NO EVENT BE LIABLE FOR ANY DAMAGES IN EXCESS OF THE AMOUNT D-LINK RECEIVED FROM THE END-USER FOR THE PRODUCT.

### **Content:**

<b>REVISION HISTORY AND SYSTEM REQUIREMENT:</b> .....	<b>2</b>
<b>IMPORTANT NOTES:</b> .....	<b>3</b>
<b>NOTES FOR CONFIGURATION AUTO-BACKUP/RESTORE IN USB STORAGE:</b> .....	<b>5</b>
<b>UPGRADING INSTRUCTIONS:</b> .....	<b>5</b>
UPGRADING BY USING WEB-UI .....	5
<b>NEW FEATURES:</b> .....	<b>6</b>
<b>PROBLEMS FIXED:</b> .....	<b>10</b>
<b>KNOWN ISSUES:</b> .....	<b>23</b>
<b>RELATED DOCUMENTATION:</b> .....	<b>24</b>

## Revision History and System Requirement:

Firmware Version	Date	Model Hardware	History
4.6.1.1_RU	06 Nov 2017	DWC-1000 C1	M2.3 release, C1 RU version
4.6.1.1_WW	14 Sept 2017	DWC-1000 A1/B1/C1	<ol style="list-style-type: none"> <li>1. M2.3 release</li> <li>2. To fix inconsistency issues among DWC-1000 A1/B1_v4602 and C1_v4603.</li> </ol> <p><i>Note: When A1/B1 and C1 are in the same network segment (broadcast domain), DWC-1000 C1 must be configured as master controller in peer group to avoid syncing error between controllers.</i></p>
4.6.0.3_WW	29 July 2017	DWC-1000 C1	<ol style="list-style-type: none"> <li>1. No changes, just rename C1 v4601 to C1 v4603.</li> <li>2. Update known issue list</li> </ol>
4.6.0.2_WW	04 July 2017	DWC-1000 A1/B1	Based on v4601
4.6.0.1_WW	05 June 2017	DWC-1000 A1/B1	Support new UAPs
4.4.1.2_WW 4.4.1.2_RU	20 Nov 2015	DWC-1000 A1/B1	<ol style="list-style-type: none"> <li>1. <i>User Manual ver. 3.12</i></li> <li>2. <i>Correct typo</i></li> </ol>
4.4.1.2_WW 4.4.1.2_RU	08 Sept 2015	DWC-1000 A1/B1	<ol style="list-style-type: none"> <li>3. New GUI firmware</li> <li>4. On top of FW v4.4.1.1</li> <li>5. Bug fix</li> <li>6. Update new feature field on 4.4.1.2/4.4.1.1/4.4.0.2.</li> <li>7. Update problem fixed items on 4.4.0.2_B301 field.</li> </ol>
4.4.1.1_WW 4.4.1.1_RU	22 May 2015	DWC-1000 A1/B1	<ol style="list-style-type: none"> <li>1. New GUI firmware</li> <li>2. On top of FW v4.4.0.2_B501</li> </ol>
4.4.0.2_B301_WW 4.4.0.2_B301_RU	13 Mar 2015	DWC-1000 A1/B1	<ol style="list-style-type: none"> <li>1. Bug fix</li> </ol>
4.4.0.2 4.4.0.2	02 Mar 2015	DWC-1000 A1/B1	<ol style="list-style-type: none"> <li>1. Bug fix</li> </ol>
4.3.0.2_B401_WW 4.3.0.2_B401_RU	03 Dec 2014	DWC-1000 A1/B1	<ol style="list-style-type: none"> <li>1. Bug fix</li> </ol>
4.3.0.2_B305_WW 4.3.0.2_B305_RU	25 Nov 2014	DWC-1000 A1/B1	<ol style="list-style-type: none"> <li>1. Bug fix</li> <li>2. Security Vulnerability Addressed OpenSSL vulnerability (CVE-2014-3566)</li> </ol>
4.3.0.2_B203_WW 4.3.0.2_B203_RU	05 Nov 2014	DWC-1000 A1/B1	<ol style="list-style-type: none"> <li>1. DWC-1000 and DWC-2000 are <b>not</b> vulnerable to SRTP Memory Leak (CVE-2014-3513).</li> </ol>
4.3.0.2_B101_WW 4.3.0.2_B101_RU	11 Sept 2014	DWC-1000 A1/B1	N/A

4.3.0.2_WW 4.3.0.2_RU	12 Aug 2014	DWC-1000 A1/B1	1. Security Vulnerability Addressed OpenSSL vulnerability (CVE-2014-0224)
4.3.0.1_WW 4.3.0.1_RU	17 July 2014	DWC-1000 A1/B1	1. New AP support 2. Bug fix 3. Based on 4.2.0.6_B501
4.2.0.6_WW_B303 4.2.0.6_RU_B303	11 Apr 2014	DWC-1000 A1	1. DUSA20140204000002 2. Security Vulnerability Addressed
4.2.0.6_WW_B201 4.2.0.6_RU_B201	11 Mar 2014	DWC-1000 A1/B1	1. Bug fix 2. Security Vulnerability Addressed
4.2.0.6_WW 4.2.0.6_RU	03 Mar 2014	DWC-1000 A1/B1	1. Add firmware MD5 checksum info 2. Update "Important Notes" 3. Update "Notes for Configuration Auto-Backup/Restore in USB Storage"
4.2.0.6_WW 4.2.0.6_RU	30 Dec 2013	DWC-1000 A1/B1	1. Security Vulnerability Addressed

## Firmware Details:

Image Version	HW	MD5 Checksum
DWC-1000_C1_FW4.6.1.1_RU	C1	5f09f61997894226c033f42fa44e6dab

## Important Notes:

1. A firmware region mismatch between RU and WW images now is forbidden. System will check and block firmware upgrade process, such as firmware upgrade from RU→WW or WW→RU image.
2. Below are new functions and will be available after upgrading FW to v4.2.0.3 or later.

Website Filter	Content Filtering
	Approved URLs
	Blocked Keywords
	Export
	Category filtering

**Website Filter** feature (Content Filtering/ Approved URLs/ Blocked Keywords/ Export) needs DWC-1000-VPN/ DWC-1000-VPN-LIC license upgrade.

**Category Filtering** feature needs DWC-1000-WCF-12 or DWC-1000-WCF-12-LIC license upgrade.

3. B1 firmware is not backward compatible with HW A1, please make sure the hardware version

is correct before upgrading firmware for DWC-1000.

- Hardware B1 supports **Web Recovery Mode** whenever there is firmware damage on DWC-1000, or manually access it by following steps: Power off the DWC-1000, press and hold the reset button, then power on and keep hold the reset button for over 15 seconds, the DWC-1000 will enter the Web Recovery Mode either.

```
Clearing DRAM..... done
BIST check passed.
Starting PCI
PCI Status: PCI 32-bit
PCI BAR 0: 0x00000000, PCI BAR 1: Memory 0x00000000 PCI 0xf8000000
Net: octeth0, octeth1, octeth2

Hit any key to stop autoboot: 0 .....

!!! Entering Http Recovery Mode !!!

Interface 0 has 3 ports (RGMII)
uip init ..
IP address is: 192.168.1.1
httpd init ..
fs_init(Entry)
NetState: 1
octeth0: Up 1000 Mbps Full duplex (port 0)
```

The IP address will be 192.168.1.1, and make sure to setup same IP segment for your PC/NB then access the Web Recovery Mode via browser.



- GNU/Linux Bash Shell vulnerability (CVE-2014-6271)

We have evaluated this vulnerability. DWC-1000 and DWC-2000 are **not** vulnerable to this since these devices do not expose the shell interface through CLI nor WEB interface (including CGI).

Reference website:

<http://web.nvd.nist.gov/view/vuln/detail?vulnId=CVE-2014-6271>

<http://seclists.org/oss-sec/2014/q3/650>

<https://blogs.akamai.com/2014/09/environment-bashing.html>

#### 6. SRTP Memory Leak (CVE-2014-3513)

We have evaluated this vulnerability. DWC-1000 and DWC-2000 are **not** vulnerable to this since these devices do not support SRTP and based on OpenSSL 1.0.x versions.

Reference website:

<http://web.nvd.nist.gov/view/vuln/detail?vulnId=CVE-2014-3513>

#### 7. DWC-1000 Clustering behavior among A1/B1 and C1.

When A1/B1 and C1 are in the same network segment (broadcast domain), DWC-1000 C1 must be configured as master controller in peer group to avoid syncing error between controllers.

### **Notes for Configuration Auto-Backup/Restore in USB Storage:**

D-Link DWC Unified Controller support configuration backup or restore automatically while a USB drive is inserted. Following information instructs what condition will perform backup/restore.

1. The configuration will be automatically backed up to the USB drive as soon as the USB drive is inserted. The configuration file name format is <Model Name>\_<Serial Number>.cfg.
2. The system LED on the DWC blinks 5X in amber to indicate a backup operation has started.
3. The configuration in the USB drive can be updated if the user manually clicks 'Save Settings' in any GUI page and provided the Model Number and the Serial Number of the DWC matches with the file already present in the USB drive.
4. In case of reboot, the DWC checks for the presence of configuration file (with format ModelName\_SerialNumber.cfg). If found, the configuration from the USB drive is restored on the DWC. If a configuration file with the correct format is present in both connected USB drives, the configuration from the first USB drive will be used to restore the DWC.
5. The USB drive can have only one configuration with the above mentioned format for each model name.
6. If the USB drive is plugged in to the DWC which is in factory default state, then during reboot, no backup is taken since no custom configuration file exists in the DWC by that time. The custom configuration is stored on the USB drive once the user clicks Save Settings in any GUI page.

### **Upgrading Instructions:**

#### **Upgrading by using Web-UI**

For installation details and upgrade instructions, please refer to the Firmware Upgrades chapter in the *DWC-1000 User Manual ver. 3.12*.

## New Features:

Firmware Version	New Features
4.6.1.1_RU	1. M2.3 release, C1 RU version
4.6.1.1_WW	1. M2.3 release, no new features 2. To fix inconsistency issues among DWC-1000 A1/B1_v4602 and C1_v4603.
4.6.0.2_WW	N/A (Based on A1/B1 v4601)
4.6.0.1_WW	1. Support DWL-3610AP/6610AP_B1 2. Support new license, AP18-LIC 3. Single VLAN setting on WAN 4. Sync MAC authentication and CP attribute with DWS 5. Add back Facebook Wifi 6. Human Readable Log for AP Lost Management 7. Password rules (A1/B1 v4601 not support yet)
4.4.1.2_B501C	DWL-8710AP support (DWC-1000 A1/B1 FW v4.4.1.2B501C and onwards)
4.4.1.2_WW 4.4.1.2_RU	New GUI style.
4.4.1.1_WW 4.4.1.1_RU	1. New GUI style. 2. DWL-6610AP support (DWL-6610_FW_v_4.3.0.2_B042.tar or later version) 3. WDS-managed AP feature for 6610AP is not ready yet 4. [HQ20141204000016] WLAN visualization issues-- <b>Not</b> supported for A1 hardware for new GUI image, but B1 supported.
4.4.0.2_B301_WW 4.4.0.2_B301_RU	N/A
4.4.0.2_WW 4.4.0.2_RU	1. Maximum Clients 30 as default 2. Update Russia Time Zone 3. DWL-6700AP support (DWL-6700_FW_v4_4_0_6.bin or later version) 4. DWL-6700AP doesn't support WDS-managed AP feature
4.3.0.2_B401_WW 4.3.0.2_B401_RU	N/A

1. Increase the DHCP IP leasing scope (/22, 255.255.252.0)

Example: WEB GUI

**LAN IP Address Setup**

IP Address:

Subnet Mask:

**List of Available DHCP Pools**

<input type="checkbox"/>	Start IP Address	End IP Address
<input type="checkbox"/>	192.168.8.2	192.168.8.254
<input type="checkbox"/>	192.168.9.2	192.168.9.254
<input type="checkbox"/>	192.168.10.2	192.168.10.254
<input type="checkbox"/>	192.168.11.2	192.168.11.254

Example: Setting LAN IP and DHCP server via CLI command

\*\*\*\*\*

```
D-Link DWC> net lan ipv4 configure
net-config[lan-ipv4]> static address 192.168.8.1
net-config[lan-ipv4]> static subnet_mask 255.255.252.0
net-config[lan-ipv4]> save
net-config[lan-ipv4]> .top
D-Link DWC>
D-Link DWC> net dhcp-pool-config add
net-config[pool-config]> vlanid 1
net-config[pool-config]> start_address 192.168.8.2
net-config[pool-config]> end_address 192.168.8.254
net-config[pool-config]> save
net-config[pool-config]> vlanid 1
net-config[pool-config]> start_address 192.168.9.2
net-config[pool-config]> end_address 192.168.9.254
net-config[pool-config]> save
net-config[pool-config]> vlanid 1
net-config[pool-config]> start_address 192.168.10.2
net-config[pool-config]> end_address 192.168.10.254
net-config[pool-config]> save
net-config[pool-config]> vlanid 1
net-config[pool-config]> start_address 192.168.11.2
net-config[pool-config]> end_address 192.168.11.254
net-config[pool-config]> save
```

4.3.0.2\_B101\_WW  
4.3.0.2\_B101\_RU

```

net-config[pool-config]> .top
D-Link DWC>
D-Link DWC> net lan ipv4 configure
net-config[lan-ipv4]> dhcp mode DHCP-Server
net-config[lan-ipv4]> dhcp default_gw 192.168.8.1
net-config[lan-ipv4]> save
net-config[lan-ipv4]> .top
D-Link DWC>

```

\*\*\*\*\*

## 2. Reboot Scheduler via CLI command

\*\*\*\*\*

```

D-Link DWC> util schedule-reboot true
Operation Succeeded
...
D-Link DWC> Reboot Reason : reboot scheduler
The system is going down NOW !!
Sending SIGTERM to all processes.

```

\*\*\*\*\*

- a. Enable: "util schedule-reboot true"
- b. Disable: "util schedule-reboot false"
- c. It will reboot every day automatically during 03:01:10 – 03:01:50, not 3AM sharp.

## 3. Reboot Trace Code via CLI command

\*\*\*\*\*

```

D-Link DWC> show system status
System Info
-----
System Up Time: 0 days, 0 hours, 2 minutes, 49 seconds
Reboot Trace Code: reboot scheduler
ModelId: DWC-1000
System Name: DWC-1000
WLAN Module Version: 4.2.0.1
Firmware Version: 4.3.0.2_A1_B101_WW
Serial Number: QBE81B6000004
UBOOT_VERSION: N/A

```

\*\*\*\*\*



## 4. Deleting local user via CLI command

\*\*\*\*\*

```
D-Link DWC> system group add
groups-config[userdb]> groupname CP
groups-config[userdb]> description Captive-Portal
groups-config[userdb]> Privilege_Type CaptivePortal Y
groups-config[userdb]> grouptimeOut 10
groups-config[userdb]> save
groups-config[userdb]> .top
D-Link DWC>
```

```
D-Link DWC> system users add
users-config[userdb]> username fatman
users-config[userdb]> password 12345678
users-config[userdb]> password_confirm 12345678
users-config[userdb]> groupname CP
users-config[userdb]> FirstName Fatman
users-config[userdb]> LastName Chen
users-config[userdb]> save
users-config[userdb]> .top
```

```
D-Link DWC> show system users all
```

```
-----USERS-----
```

---

```
ROWID User Name Group Login Status
```

---

```
1   admin   ADMIN Enabled (LAN) Enabled (OPTION)
2   guest   GUEST Disabled (LAN) Disabled (OPTION)
3   fatman   CP   Enabled (LAN) Enabled (OPTION)
```

```
D-Link DWC> system users delete_user fatman
```

```
STATUS_OK
```

```
D-Link DWC> show system users all
```

```
-----USERS-----
```

---

```
ROWID User Name Group Login Status
```

---

```
1   admin   ADMIN Enabled (LAN) Enabled (OPTION)
```

	<p>2 guest GUEST Disabled (LAN) Disabled (OPTION)</p> <p>D-Link DWC&gt;</p> <p>*****</p> <p>a. Delete via User Name: "system users delete_user fatman"</p> <p>b. Delete via ROW ID "system users delete 3"</p>															
4.3.0.2_WW 4.3.0.2_RU	N/A															
4.3.0.1_WW 4.3.0.1_RU	<p>1. DWL-8610AP Support (DWL-8610_FW_v_4.3.0.2_B016)</p> <p>2. Delete/deactivate licenses via CLI command</p> <p>*****</p> <p>D-Link DWC&gt; license clear</p> <p>*****</p> <p>3. The Max AP database number is 4 times of Max Managed AP number supported on DWC-1000.</p> <table border="1"> <thead> <tr> <th>AP license</th> <th>Default</th> <th>AP6 x 1</th> <th>AP6 x 2</th> <th>AP6 x 3</th> </tr> </thead> <tbody> <tr> <td>Max AP database</td> <td>24</td> <td>48</td> <td>72</td> <td>96</td> </tr> <tr> <td>Max Managed AP</td> <td>6</td> <td>12</td> <td>18</td> <td>24</td> </tr> </tbody> </table>	AP license	Default	AP6 x 1	AP6 x 2	AP6 x 3	Max AP database	24	48	72	96	Max Managed AP	6	12	18	24
AP license	Default	AP6 x 1	AP6 x 2	AP6 x 3												
Max AP database	24	48	72	96												
Max Managed AP	6	12	18	24												
4.2.0.6_B303_WW 4.2.0.6_B303_RU	N/A															
4.2.0.6_B201_WW 4.2.0.6_B201_RU	N/A															
4.2.0.6_WW 4.2.0.6_RU	N/A															

## Problems Fixed:

Firmware Version	Problems Fixed
4.6.1.1_RU C1	<p>1. <del>DBG17040281 DWC-1k_Mac-Auth_webUI issue for authentication action in MAC database.</del></p> <p>2. <del>DBG17050181 H/W=C1 cannot create 256 temp users on frontdesk page.</del></p> <p>3. <del>DBG17050302 DWC-1k_Bug_CLI_Cli format changed in C1 version (SPR#56187).</del></p> <p>4. <del>DBG17050183 DWC_AD_Two issue within AD page, server check and web page difference.</del></p> <p>5. <del>DBG17050179 DWC_CLI_Having the different command for option port setting between A1, B1 and C1.</del></p> <p>6. <del>DBG17050309 DWC_AP_Profile_DWC-1k still suffer the same issue as DBG17020030, SPR-59525.</del></p> <p>7. <del>DBG17050306 DWC-1k_webUI_the spelling issue in CP setting.</del></p>

8. ~~DBG17050319 DWC-1000\_UserDatabase\_ with the same incorrect CSV-format DWC-1k show the different error message between different hardware types.~~
9. DBG17050100 DWC-1k\_webUI\_ the different UI displacement between SSID profile and AP profile SSID pages.
10. DBG17050094 DWC-1k\_Ap-Profile\_Still has the redirection option for new added xx10AP.
11. DBG17040240 DWC-1k\_ap-database\_incorrect number of AP-database in CLI.
12. DBG17050157 A1/B1 failed to upload the CSV file to USER DB, the same format is work for H/W C1 version. (DBG17020018)( SPR#59719)
13. DBG17050205 DUT will present a critical page as accesses into frontdesk page after a specific test steps performed.
14. ~~DBG17050304 CLI issue "net LAN DHCP reserved\_ip" is different with old firmware version, and it's also different between B1 and C1 version. (previous case SPR#55519)~~
15. DBG17050337 DWC-1000\_User-database\_ can upload CSV file even it will exceed the mac spec number (SPR#57698).
16. ~~DBG17050335 DWC-1000\_CLI\_CLI act incorrectly when adding the Mac Authentication database with the account exceed mac number.~~
17. ~~DBG17050326 The Web GUI naming of internal database is different between B1 and C1, need to be synced.~~
18. DBG17050213 DWC-1000\_frontDesk\_Unclear ticket info with the billing profile type Start-while-Account-Login.
19. DBG17050147 DWC-1k\_Peer-Sync\_incorrect temp CP info cause by peer sync.
20. DBG17050182 DWC\_LDAP\_The default configurable base CN in LDAP setting should be D-Link.
21. DBG17040246 DWC-1k\_LDAP\_exceed max LDAP server via CLI and strange behavior when authenticating.
22. DBG17050246 Bug is not fixed (HQ20150812000006/SRP#53146), DWC-1000(C1) is not working as expected.
23. DBG17050150 Password rules for A1/B1 (SPR#61970)
24. HQ20170612000004 (Config Migration : Uploading DWC-1000/A1's Config to DWC-1000/C1) (SPR#61606)
25. DBG17050165 The NT domain setting page doesn't sync between A1, B1 and C1. (SPR#60814)
26. HQ20170614000012 (CP login page with HTTPS by default, C1 only)

4.6.0.2_WW	1. HQ20170614000009 To fix the AP License to Zero Issue (A1/B1 only)
4.6.0.1_WW	<ol style="list-style-type: none"> <li>1. HQ20160627000021 Captive Portal issues from DHQ setup</li> <li>2. HQ20160831000011 LAN client cannot access Internet when default gateway is DWC</li> <li>3. HQ20161220000011 Need to allow space character in SSID profile configuration from both SSID profiles and AP profile SSID page</li> <li>4. HQ20160722000011 [DLAB] Unable to get the value for OID "wsManagedAPRadioBandwidth" when radio bandwidth is 80 MHz</li> <li>5. HQ20160705000002 Unable to disassociate clients from SNMP browser with OID "wsAssociatedClientDisassocaiteAction"</li> <li>6. HQ20160831000014 SLA content is not coming properly in mobile phone</li> <li>7. DBG16080306 Incorrect error message when we add 65th AP profile</li> <li>8. DBG16110292, DBG16110290 Difference in alert message usage and actual usage left for TEMP CP</li> <li>9. HQ20160621000015 [WebGUI] Status Bar shows "Operation Failed" when we edit &amp; save SSID</li> <li>10. HQ20160825000010 Authorzie.net error mapping if any issue in configuration of billing profiles</li> <li>11. DBG16080304 Need to show link local ipv6 address in GUI.</li> <li>12. DBG16080282 Unable to set more than 31 days in the session timeout value of billing profile</li> <li>13. DBG16110379, HQ20161116000010 Error message when added a ACL rule with L4 port HTTP</li> <li>14. HQ20160412000011 Captive portal problem-[Expiry date is showing wrong when we select start while account created in billing profile]</li> <li>15. HQ20160407000015 PayPal is not working for PayPal test</li> <li>16. HQ20160321000006 Unable to configure diffserv match selector with IP address as 0.0.0.0/0.0.0.0</li> <li>17. HQ20160321000004 Minimum Power should persist across reboot</li> <li>18. HQ20160505000002,HQ20160518000004 Auto power channel plan[DEUR20160504000004-Eastern Europe]</li> <li>19. HQ20160331000014 LDAP Daemon is killing while login through CaptivePortal</li> <li>20. HQ20160613000033 The number of SSID of AP Profile HW type 6700 conflicts with DWL-6700 design</li> <li>21. HQ20160506000007 Device is throwing error as "Give the radio interface", when tried to reset AP from CLI.</li> </ol>

22. HQ20160721000002 Unable to delete the VLAN though it is not associated to any SSID from dwc-1k with config
23. HQ20160415000015 DWC web unstable issues, sometimes login button missing, pages are not loading properly, wrong notifications after logged-in to CP
24. HQ20160218000007 Need to change the IPsec mode config and DHCP client range to loop back address, also when customer tries
25. HQ20160301000019 Bandwidth rule [control] on option2 is not working.
26. HQ20160311000013, HQ20160914000007 Cannot redirect to "Successful login page" after temporary user click accept button.
27. HQ20160701000005 Upgrade firmware from 4.4.0.2\_B401 to 4.4.1.3\_B101, configuration becomes default
28. HQ20160506000010 Routing Logs should come irrespective of facility Logs in DWC-1000
29. HQ20160513000002 Unable to save time from CLI
30. HQ20160506000017 Need to support Called Station ID Attribute in Access-Request packet
31. HQ20160621000015 [WebGUI] Status Bar shows Operation Failed When we edit & save SSID
32. HQ20160606000019 Cluster Controller displayed some APs as are "Conn Failed" on Cluster Controller WEBUI
33. HQ20160705000002 Unable to disassociate clients from SNMP browser with OID "wsAssociatedClientDisassocateAction"
34. HQ20160722000011 Unable to get the value for OID "wsManagedAPRadioBandwidth" when radio bandwidth is 80 MHz
35. HQ20160831000014 SLA content is not coming properly in mobile phone
36. HQ20160627000021 Captive Portal issues of setup
37. HQ20160825000010 Authorzie.net error mapping if any issue in configuration of billing profiles
38. HQ20160909000009 Need to modify the help content for maximum controllers in cluster for DWC-1k to 4 from 8
39. HQ20160831000011 LAN client cannot access Internet when default gateway is DWC
40. HQ20161116000010 When added a ACL rule with I4 port HTTP then when edit it is showing as www
41. HQ20161021000002 DWC-1000 issues

- [DI20161012000002-Singapore]
42. HQ20160822000012 httpd upgrade, LDAP changes & loggingd changes for issues observed in customer setup
43. HQ20160218000006- overlapping subnet/ VLAN  
[DEUR20160217000006-Eastern Europe] Unable to configure VLAN with Addresses 192.168.10.1/24 after changing the default LAN IP also
44. HQ20160215000046-DWC-1k - DHCP Issue  
[DEUR20160211000007-Central Europe] should not allow reserved IP configuration from CLI in the range of DHCP pools
45. HQ20160219000003-Default HTTPS port number is 4443 instead of 443  
Need to add port 443 for remote management and SSL-VPN
46. HQ20160219000016- Captive Portal redirect feature doesn't work correctly[DEUR20160218000019-Eastern Europe] Need to hide redirect option in SSID page when we enable the captive portal in the same page
47. HQ20160219000021- how does CP user logout? how can administrator logout CP user?[DEUR20160218000011-Eastern Europe] After login to the captive portal if redirection to any website is enabled need to redirect it in new page, with logout button in same login page
48. HQ20160302000015- [Web GUI] When 2.4G Radio turned off, the 5GHz status in Radio Detail Page is blank. The 5GHz radio status in Radio Detail Page is blank when we managed DWL-6700AP.
49. HQ20160304000002- DWC-2000: Problem with AP debug mode.[DRU20160303000004-Russia] Need to extend the password length to 5 ~ 32 characters for AP debug mode
50. HQ20160223000012- RADIUS unauthenticated client is blacklisted[DEUR20160222000003-Eastern Europe] Need to add delete all and single delete function in detected clients page and also change the option in WIDS client security configuration page for MAC Authentication Database Lookup Method option
51. HQ20151013000018 - DWC-2000 Captive Portal HTTPS is not reply at all  
Captive Portal Logout behavioral change
52. HQ20160216000012 - SSL vulnerability [DEUR20160208000002-UKI]  
SSL/TLS use of weak RC4 cipher- CVE-2013-2566
53. HQ20160127000001-Hangs when using temporary user captive portal hot spot [DEUR20160126000008-South Europe] Should get server busy redirect page instead of 503 error page
54. HQ20151229000008-No SLA Configuration for Temporary User No SLA Configuration for Temporary User in SSID profiles page

	<p>55. HQ20160127000021-- DWC-1000 + DWL-8610 - several issues[DEUR20160125000011-Central Europe][three issues]-DWC-1000 + DWL-8610 several issues</p> <p>56. HQ20160218000017-Paypal CP translation [DEUR20160217000012-Eastern Europe] Spelling mistake in pay pal configuration page</p> <p>57. HQ20160201000019-Master &amp; Peer show AP's previous radio power values in Web GUI after turn off AP radio (continue HQ20151216000012) When both the radio of peer managed AP is off then channel is not getting updated in master</p> <p>58. HQ20160218000018--DSR-Series - FW 2.x &amp; 3.x - PPPoE password length to short [DEUR20160217000004-Central Europe] Need to increase the PPPoE password length</p> <p>59. HQ20151217000014-Nat problem [DEUR20151216000007-South Europe] NAT problem [DWC-1000 device WAN is not getting up in roll-over case]</p> <p>60. HQ20151218000002-What is the unit used for the QoS Bandwidth limit on the SSID configuration page? [DUSA20151218000001-Canada] The value of client QoS bandwidth up/down value is displaying as -1 when configuring maximum values</p> <p>61. HQ20151221000015-management remote access behind NAT with port forwarding [DEUR20151218000002-Eastern Europe] Unable to open DWC-1000 GUI pages when device is behind NAT with Port forwarding Rule</p> <p>62. HQ20160106000002- DWC-1000 - Option forced roaming Force roaming option is getting disabled after reboot for managed AP entry added in valid access points page</p> <p>63. HQ20151125000010-DWC-1000 and DWL-8610AP Captive portal ERROR page issue. [DUSA20151121000001-USA] Observed operation does not exist message while edit and click on save button</p>
<p>4.4.1.2_WW 4.4.1.2_RU</p>	<ol style="list-style-type: none"> <li>1. DBG14090381 Unable to see the fields e.g. Header, Customized Not, Time Stamp and Footer.</li> <li>2. DBG14090416 incorrect CP type in AP Profile SSID page.</li> <li>3. DBG15050481 Reboot message incorrect</li> <li>4. DBG15050404 DWL-2600 &amp; 8610AP not support WEP encryption, so DWC-1000 should not have the option.</li> <li>5. DBG15050482 Cannot find select all button</li> <li>6. DBG15050472 For managed AP,5G and 2.4G display should reverse in "RF</li> </ol>

	<p>scan" page for 8610 AP</p> <ol style="list-style-type: none"> <li>7. DBG15050478 unable to set more than 16 characters in the user name for PPPOE setting when using Wizard to setup PPPOE.</li> <li>8. DBG15050477 Can't type "@" and "." when we choose PPPoE connection type in "internet connection wizard".</li> <li>9. DBG15050485 display incorrect info on Managed AP page</li> <li>10. DBG15050489 Wireless switch task dead</li> <li>11. DBG12050169 DWC WEB GUI logout after some time operation (random only), need to login again to use.</li> <li>12. DBG15050416 firmware download behavior in DWC-1k must be changed</li> <li>13. DBG13120227 Managed AP status radio details must be properly displayed for 8610 AP</li> <li>14. DBG13120226 The 5Ghz radio shall display 802.11a/n/ac supported in Default profile.</li> <li>15. Ap profile radio mode page description is showing wrong for Radio 1 and Radio 2 operate modes</li> <li>16. Unable to change Country code to BR</li> <li>17. Captive Portal redirect feature does not works on mobile device</li> <li>18. LAN leased clients entries are flushed if we add new VLAN in the device in DWC1000</li> <li>19. Syslog: Client Association/Roaming/Disassociation logs not showing the location information</li> <li>20. Channel information is incorrect on Managed AP page in DWC1000</li> <li>21. Tablet(or IPAD) and cell phone does not display correct captive portal page in DWC1000</li> <li>22. Issues with WLAN visualization page in DWC-1000</li> <li>23. Unable to configure the limits for bandwidth in option qos page</li> <li>24. Support for SNMP QoS Differentiated Services in DWC-1000</li> <li>25. Need to add more IP address(1024) list at the L3 discover page for DWC-1000</li> <li>26. Unable to obtain all OIDs in MIB browser on performing walk operation</li> </ol>
<p>4.4.1.1_WW 4.4.1.1_RU</p>	<ol style="list-style-type: none"> <li>1. 49916 P1 Observed critical error after STA pass captive portal Login in IE11 browser(DWC-1000)</li> <li>2. 50003 P1 DHCP server in vlan is not responding when configured relay on another vlan (4.4.0.2_B401)</li> <li>3. 50169 P1 Unable to upgrade firmware to 8610-AP from DWC-1000 (4.4.0.2_B401)</li> <li>4. 50333 P1 Unable to see the channel suggestion for 5 ghz (4.4.0.2_B402)</li> </ol>



	<ol style="list-style-type: none"> <li>5. 50356 P1 Need to add DWL-6610 AP support in DWC-1000 device (4.4.0.2_B401)</li> <li>6. 50392 P1 Unable to push the radius server details to DWL-6600 AP from DWC-1000 device (4.4.0.2_B401)</li> <li>7. 50524 P1 The DWL-6700 did not support WEP encryption (4.4.0.2_B402)</li> <li>8. 50596 P1 Hardware Name is wrong for DWL-8610 ap in DWC-1000 device (4.4.0.2_B501)</li> <li>9. 51080 P1 Need to apply changes for vulnerability CVE-2015-0291 / CVE-2015-0204. (4.4.0.2_B501)</li> <li>10. 51258 P1 Java applet should load with latest java versions in B1 Hardware</li> <li>11. 51263 P1 Wlan visualization should work similar to 4.3.0.1 image for A1 hardware</li> <li>12. 51331 P1 HQ20141104000020 Not able to perform trace route or ping functionality of ipv6 addresses from diagnostics page</li> <li>13. 51344 P1 HQ20150119000014 Radio mode is saving as 802.11b/g in AP Profile Radio page when we save it as 802.11b</li> <li>14. 51348 P1 HQ20141128000005 Observed Status of Physical mode in RF scan page is not showing properly in DWC-1000 using DWL-8610AP</li> </ol>
<p>4.4.0.2_B501_WW 4.4.0.2_B501_RU</p>	<ol style="list-style-type: none"> <li>1. 50596 P1 HQ20150401000014 The HW type naming issue of DWL-8610AP</li> <li>2. 47777 P1 HQ20140804000014 Intermediate Restart[DRU20140730000001-Middle East]</li> <li>3. 51080 P1 N/A Open SSL Vulnerability patches</li> </ol>
<p>4.4.0.2_B402_WW 4.4.0.2_B402_RU</p>	<ol style="list-style-type: none"> <li>1. 50333 P1 DBG15030267 Auto-channel function not work in the DWC-1000 with the fixed time setting</li> <li>1. 50333 P1 HQ20150127000021 Auto Channel in 5G not work properly [DUSA20150122000002-USA]</li> <li>2. 50524 P1 DBG15030277 The DWL-6700 did not support WEP encryption, but controller has the option</li> </ol>
<p>4.4.0.2_B401_WW 4.4.0.2_B401_RU</p>	<ol style="list-style-type: none"> <li>1. 50169 P1 HQ20150305000004 DWC-1000 - error by updating APs[DEUR20150304000004-Central Europe]</li> <li>2. 50003 P1 HQ20141209000011 SHCP server stopped working[DEUR20141021000006-Eastern Europe]</li> <li>3. 50356 P1 N/A Need to add DWL-6610 AP support in DWC-1000 device</li> <li>4. 50392 P1 N/A Unable to push the radius server details to DWL-6600 AP from DWC-1000 device</li> </ol>

<p>4.4.0.2_B301_WW 4.4.0.2_B301_RU</p>	<ol style="list-style-type: none"> <li>[DUSA20141119000004][HQ20141121000004] Display error of Controller MAC Address on AP Details</li> <li>[DEUR20150130000005][HQ20150202000005] DWC-1000 - scheduler</li> <li>[DI20150211000005][HQ20150212000006] DHCP server for each VLAN</li> <li>[HQ20150210000018] Incorrect usage-left info shown in the log-out web page</li> <li>Trap Log Enhancement. To sync the Log behavior from DWS-4026 for DJP SPEC: SNR-20141118-001</li> <li>ACA diff_91 (auto channel algorithm) DWS-4026 DTrack case: DEUR20140918000007/HQ20140919000018 FW: DWS-4026_4.3.0.3_B016</li> </ol>
<p>4.4.0.2 4.4.0.2</p>	<p>N/A</p>
<p>4.3.0.2_B401_WW 4.3.0.2_B401_RU</p>	<ol style="list-style-type: none"> <li>[DLA20140829000002][HQ20140829000007] Problem with vlan</li> <li>[DEUR20141024000002][HQ20141027000007] DWC-1000 - becomes unresponsive</li> <li>DBG14080374</li> </ol>
<p>4.3.0.2_B305_WW 4.3.0.2_B305_RU</p>	<ol style="list-style-type: none"> <li>[DEUR20140912000008][HQ20140915000017] DWC-1000 VPN LIC - Auto-Rollover OPT 1 - 2 DDNS not updated</li> <li>OpenSSL vulnerability (CVE-2014-3566) Security Vulnerabilities Addressed: OpenSSL before 0.9.8za, which allows man-in-the-middle attack, and consequently hijack sessions or obtain sensitive information. Reference: CVE-2014-3566 <a href="http://web.nvd.nist.gov/view/vuln/detail?vulnId=CVE-2014-3566">http://web.nvd.nist.gov/view/vuln/detail?vulnId=CVE-2014-3566</a> Solution: For the fix for this vulnerability issue, we did not upgrade OpenSSL. Rather we selectively merged the required changes to resolve the issue into the current OpenSSL version 0.9.8za.</li> <li>[DEUR20141110000005][HQ20141111000010] DWC-1000 &amp; DWL-8610 - no 80 MHz choosable for country CH</li> </ol>
<p>4.3.0.2_B101_WW 4.3.0.2_B101_RU</p>	<ol style="list-style-type: none"> <li>[DEUR20140722000001][HQ20140724000011] DWC-1000 - expiration time in Frontdesk</li> <li>[DEUR20140722000002][HQ20140729000005] automatic reboot (Schedule Reboot)</li> <li>[DEUR20140605000008][HQ20140624000021] Temp CP Expiration Issue (not gateway, it failed when using the config file from OBU, SPR#46076)</li> </ol>
<p>4.3.0.2_WW 4.3.0.2_RU</p>	<ol style="list-style-type: none"> <li>OpenSSL CCS Injection vulnerability (man-in-the-middle attack)</li> </ol>

**Security Vulnerabilities Addressed:** OpenSSL before 0.9.8za, which allows man-in-the-middle attack, and consequently hijack sessions or obtain sensitive information.

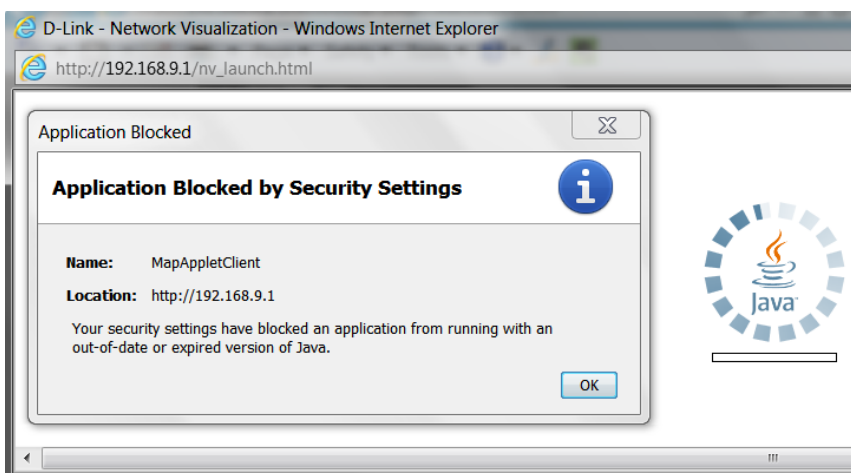
**Reference:** CVE-2014-0224

<http://web.nvd.nist.gov/view/vuln/detail?vulnId=CVE-2014-0224>

[https://www.openssl.org/news/secadv\\_20140605.txt](https://www.openssl.org/news/secadv_20140605.txt)

**Solution:** Update OpenSSL patch to 0.9.8za that addresses the vulnerability.

2. Sync DWS-4026 Auto Channel Algorithm Patch at 5GHz Issue (DI20140507000005)
3. JAVA update for wireless controller



4. [DEUR20140603000004][HQ20140604000004] DWC-1000 & DWL-2600AP - issue with WPA key after DWC-reboot
5. [DEUR20140522000001][HQ20140523000004] DWC-1000 - CP time doesn't count down in browser after logging
  - a. [44444] Usage time will get count down automatically without clicking the "F5" button or refresh button. (Resolved in v4302)
  - b. In **View Accounts** page of FrontDesk, after pressing the "F5" or refresh button in IE11 browser, the FrontDesk user is re-directing to login page (get logged out). (v4302 **didn't** include this IE11 support enhancement)
6. [DEUR20140106000001][HQ20140218000024] DWC-1000 - maximum detected client limit too low
7. [DEUR20140605000008][HQ20140624000021] DWC-1000 - time CP - expired used won't be deleted (Temporary user cannot login CP page when the daylight saving was enabled)

4.3.0.1\_WW  
4.3.0.1\_RU

1. [DEUR20140131000006][HQ20140205000020] CLI error while configuring SSID.
2. [DEUR20140305000004][HQ20140306000015] DWC-1000 VPN LIC -

	<p>issue with upload at german eMail provider (gmx.de/gmx.net)</p> <p>3. [DRU20140430000002][HQ20140507000013] Problem with the Epson 1945W projector (Issue resolved: Cannot upgrade firmware for 2600AP via DWC-1000)</p> <p>4. Memory leak issue (Spontaneously reboot every 2.5 - 3 hours, or sometimes reboot randomly)</p>
<p>4.2.0.6_B303_WW 4.2.0.6_B303_RU</p>	<p>1. [DUSA20140204000002][HQ20140219000015] Unacceptable Download Speeds Using the DWL-2600AP Controlled by the DWC-1000.</p> <p>2. <b>Security Vulnerabilities Addressed:</b> Null byte injection attack in URL. <b>Reference:</b> <a href="http://www.ultsec.com/null-byte-attack.php">http://www.ultsec.com/null-byte-attack.php</a> <b>Solution:</b> Avoid parsing the null byte in URL and send back that requested URL is not there.</p>
<p>4.2.0.6_B201_WW 4.2.0.6_B201_RU</p>	<p>1. [DEUR20140117000008][HQ20140120000016] DWC-1000 - password issue. <b>Security Vulnerabilities Addressed:</b> Using the character "\$" in the login password causes the password to get truncated to only the characters prior to it, potentially shortening and simplifying the original password. This only affects the CLI login, Web login is not affected and can accept the "\$" character in the password login. <b>Reference:</b> N/A <b>Solution:</b> Fixed CLI login to recognize the "\$" character properly.</p> <p>2. [DI20130821000001][HQ20130823000011] Cannot configure RADIUS Accounting.</p> <p>3. [DRU20140116000005][HQ20140114000010] Fail to use 5G channel on country code in Russia.</p> <p>4. [DEUR20140131000006][HQ20140205000020] CLI error while configuring SSID.</p>
<p>4.2.0.6_WW 4.2.0.6_RU</p>	<p>1. [DI20130404000005][HQ20130408000025] CLI issue and request.</p> <p>2. [DI20130405000001][HQ20130408000014] RADIUS Use Network Configuration cannot be disabled in CLI.</p> <p>3. [DI20130327000006][HQ20130328000003] The maximum number of AP can be registered into local valid DB.</p> <p>4. [DI20130108000020][HQ20130109000007] Internet Throughput (PPPoE).</p> <p>5. [DEUR20130426000003][HQ20130426000017] SNAT Issue.</p> <p>6. HTTP 500 Error a. [DRU20130708000006][HQ20130709000013]</p>

- b. [DEUR20130708000003][HQ20130730000015]
- c. [DI1208120001]
- 7. [DEUR20130410000003][HQ20130411000011] captive portal, billing.
- 8. [DEUR20130412000004][HQ20130424000016] DWC-1000 LDAP, DSR-1000N PPTP.
- 9. LDAP Issue
  - a. [DEUR20130412000004][HQ20130424000016] DWC-1000 LDAP, DSR-1000N PPTP
  - b. [DEUR20130528000001][HQ20130530000017] DWC-1000 - CP with AD LDAP integration
  - c. [DEUR20130523000012][HQ20130530000014] LDAP doesn't work
- 10. [38483][DEUR20130531000007][HQ20130603000006] DWC-1000 -NT-Domain & AD integration.
- 11. [DI20130329000002][HQ20130401000007] Do not support 802.11an or 802.11bgn for country code KR.
- 12. [DEUR20130507000003][HQ20130510000004] create corrupted config file – doesn't save config.
- 13. [DI1208120001] SNMP Trap Enhancement (P-Force/Ilya Narodetsky).
- 14. [DI20130404000001][HQ20130408000013] Warning displays by command to add RADIUS.
- 15. [DI1208120001][HQ20130508000011] No Response on SNMP Query issue, workaround is to configure "Syscontact" and "SysLocation" fields and DWC-1000 will start passing SNMP query. (P-Force/Ilya Narodetsky).
- 16. [DRU20130620000005][HQ20130621000011] WDS Status & notifications.
- 17. [DEUR20130621000009][HQ20130624000009] Hotspot mode kernel panic.
  - Maximum Local Database Users: 400
  - Maximum Billing Profile Users: 256
- 18. [HQ20130702000010] Continuous case for DWC LDAP server checks issue.
- 19. [DEUR20130621000007][HQ20130624000005] DWC1000 - remote logging via eMail.
- 20. [DEUR20130722000010][HQ20130802000002] WLAN Visualization doesn't work.
- 21. Browser issue
  - a. [DEUR20130523000001][HQ20130409000009] AP profile applying with IE10 and Chrome.

- b. [DI20130409000001][HQ20130409000009] Peer Controller Configuration Request does not start.
22. Temporary Account Enhancement
- a. [DEUR20130410000003][HQ20130411000011] captive portal, billing (an existing ticket cannot be deleted)
- b. [DEUR20130611000003] DWC-1000 – How to delete CP temporary user
- c. [DEUR20130424000010][HQ20130425000002] DWC-1000 - CP with Ticketing - How to log CP users?
23. [HQ20130812000006] billing account users are not getting expired.
24. [DEUR20130715000001][HQ20130715000008] DWC-1000 - CP with POP3 auth not working.
25. [HQ20130708000010] The DWC Generated the wrong number of billing users account.
26. [DI20130716000001][HQ20130716000019] Full tunnel failed on DWC with DSR..
27. [DEUR20130613000007][HQ20130805000004] DWC-1000 - CP issue with guest users.
28. [DUSA20130608000002][HQ20130621000018] Captive Portal (Page does not refresh and redirect).
29. [DEUR20130430000005][HQ20130502000010] Customized CP doesn't work with mobile devices.
30. [DEUR20130708000003][HQ20130730000015] DWC-1000 - Cluster problems.
31. [DRU20130718000003][HQ20130723000010] DWC-1000: DHCP relay issue.
32. [DEUR20130912000005][HQ20130913000006] multiple subnets show.
33. [DEUR20130213000002][HQ20130218000031] DWC-1000 & ALL APs - several issues with Peering.
34. Vulnerability reported by DEU ([nu11.nu11@yahoo.com](mailto:nu11.nu11@yahoo.com) 2013-08-18) Network access to the router ports 443 and 23.

**Security Vulnerabilities Addressed:** Devices respond clients some unnecessary information, and hence give hackers a chance to get a non-persistent root shell.

**Reference:** CVE-2013-5945, CVE-2013-5946

<http://packetstormsecurity.com/files/124319/D-Link-DSR-Router-Remote-Root-Shell-Overview.html>

<http://dl.packetstormsecurity.net/1312-advisories/dlinkdsrrouter-writeup.txt>

	<p><a href="http://web.nvd.nist.gov/view/vuln/search-results?query=Dlink&amp;search_type=all&amp;cves=on">http://web.nvd.nist.gov/view/vuln/search-results?query=Dlink&amp;search_type=all&amp;cves=on</a></p> <p><b>Solution:</b> Remove all unnecessary root user account</p> <p>35. [DEUR20130906000003][HQ20130909000005] DWC-1000 - PPTP Routing similar to case DEUR20120814000019</p> <p>36. [HQ20131001000009] "show system dashboard" command in CLI is not showing up with any value, until we go the status general page in GUI</p> <p>37. [DRU20130620000009][HQ20130621000008] DWC-1000: Country code and 802.11n issue</p> <p>38. [DI20130902000002][HQ20131204000011] Created time of temporary user is showing GMT time only after changing GMT + local time also</p>
--	---

## Known Issues:

Firmware Version	Known Issues
4.6.1.1_WW 4.6.1.1_RU C1	<p>DWC-1000 A1/B1/C1 v4611 WW</p> <ol style="list-style-type: none"> <li>DBG17050120 Facebook WiFi is not work---client will be presented a 404 error page.</li> <li>DBG17050232 DWC-1k_diffServ_behavior for adding ANY in diffServ Class should be the issue (SPR-54624).</li> <li>DBG17040350 DWC-1k_IP-ACL_Can setup the IP ACL Rule for ICMP with port value.</li> <li>DBG17050299 Extended bug found during the test of "SPR#55342", DUT is using LAN-IP address as source address for Radius authentication while we put the Radius server on Option1 network.</li> </ol> <p>DWC-1000 A1/B1 v4602 WW port scan issues</p> <ol style="list-style-type: none"> <li>DBG17040238 DWC-1k_Security-hole_TCP-Fin port scan failed for port 520 in special situation.</li> <li>DBG17040199 DWC-1k_Security-hole_http access with the Password in plain-text.</li> <li>DBG17040208 DWC-1k_Security-hole_https certificate be the same even after reset.</li> <li>DBG17050385 Multiple ports are staying at "open" or "closed" status.</li> </ol> <p>DWC-1000 C1 v4603 WW port scan issues</p> <ol style="list-style-type: none"> <li>DBG17070546 scan port 520 at "Closed" status.</li> </ol>

- |   |
|---|
| <ol style="list-style-type: none"><li>2. DBG17070605 UDP port scan some port at "Closed" status.</li><li>3. DBG17070548 The http login password is plaintext</li><li>4. DBG17070547 TCP-Syn scan have port response "open" and "Closed" status.</li><li>5. DBG17070588 [DBG16110376]_D-Lab_2016_11_C1_Unable to add 625 users from csv only 624 are added</li><li>6. DBG17100053 HTTPS brute force attack prevention failure (SPR#61917)</li></ol> <p>DWC-1000 C1 v4611 RU known issues</p> <ol style="list-style-type: none"><li>1. DBG17110028 DWC_Security-Hole_unexpected port scanned in TCP SYN</li><li>2. DBG17110030 DWC_Security-Hole_unexpected port scanned in UDP</li><li>3. DBG17100545 DWC_CP_Cannot reach CP page with HTTPS URL</li></ol> |
|---|

### Related Documentation:

---

- DWC-1000 User Manual ver. 3.12
- DWC-1000 CLI Reference Guide ver. 1.01