

Product Highlights

Reliable, Secure Network

Self-healing and self-optimizing technology combined with 4+4 wireless controller redundancy and RF scanning ensures reliability and performance.

Easy Guest Management

Features such as account generation, ticket issuance, user monitoring, and session extension make for a convenient wireless solution.

Scalable Network Architecture

To meet evolving network demands, access point management can be upgraded from 64 to 256 APs per controller.



DWC-2000

Wireless Controller

Features

Network Architecture

- Manage up to 64 wireless APs; upgradable to 256 APs¹ per controller
- Control up to 256 wireless APs; maximum 1024 APs¹ per cluster

Robust Network Security

- Wireless Intrusion Detection System (WIDS)
- Rogue AP Detection & Classification
- Captive Portal
- WEP, WPA Personal/ Enterprise, WPA2 Personal/ Enterprise
- 802.1x

Guest Management

- Ticket generation
- Payment gateway
- Account monitoring and extension

Compatible D-Link Wireless Access Points

- DWL-8610AP (802.11 ac)
- DWL-8600AP (802.11 a/b/g/n)
- DWL-6600AP (802.11 a/b/g/n)
- DWL-3600AP (802.11 b/g/n)
- DWL-2600AP (802.11 b/g/n)

The D-Link DWC-2000 Wireless Controller is a centralized Wireless LAN manager designed specifically for education, hospitality, and medium-to-large enterprises. With the ability to manage up to 64 (upgradable to 256) wireless access points and up to a maximum of 1,024 wireless access points in a controller cluster, the DWC-2000 is a cost-effective mobility solution suitable for medium to large scale deployments. Features such as auto-managed AP discovery and single-point management allow users to achieve enterprise class networking without the burden of executing massive and complex configurations. The guest account generation function manages guest users' bandwidth and accessibility to network resources. With a robust and comprehensive security detection system, the DWC-2000 manages associated APs by blocking potential attacks from unauthorized users and appliances, which is particularly crucial in wireless environments.

Simplified Deployment and Management

Using the Setup Wizard, the DWC-2000 can be configured for any network in minutes. Centralized management of remote access points via a simple interface provides the ability to automatically discover compatible D-Link Wireless Access Points, add them into the managed access point list, and set one-time configuration dispatch settings for them. The network administrator can use the controller clustering feature to easily log into one wireless controller and push essential configurations to others within the group.

The dashboard displays real-time monitoring of access points and associated client stations to manage network resources efficiently. Furthermore, the graphical widgets on the dashboard can be customized to provide various client and network statistics at a glance. Combined with system alarms and statistical reports on managed access points, the DWC-2000 is the one-stop platform that allows administrators to effectively optimize and manage their network environment.

Guest Control and Management

The DWC-2000 integrates guest management features that deliver a secure and easy solution for managing access to the Internet by temporary users in a private or public network. Each temporary account, or the issued ticket, is accompanied by time-limited or volume-limited Internet access privileges. The Guest Management service allows batch generation of temporary accounts, and also provides account details to the guest via printout. Furthermore, it can monitor or extend the usage on the specific account manually after account creation and activation. By connecting with payment gateways to authorized credit card or electronic payments, guests can easily purchase the service online.

Robust and Optimized Network

The DWC-2000 offers self-organizing, self-optimizing, and self-healing network capabilities to increase the stability of the entire wireless network. Maximum 4+4 wireless controller redundancy and AP provisioning automatically switches the AP management from the failed controller to the backup in emergency scenarios, giving your network the reliability it needs. Featuring regular radio scanning and performance analysis, the DWC-2000 automatically tunes radio channels and power from time to time to avoid interference and keep the wireless network optimized. To make up for a sudden RF signal vacuum created by a "dead" access point, the DWC-2000 increases the transmission output power of neighboring access points to expand RF coverage for a reliable, high performance network.

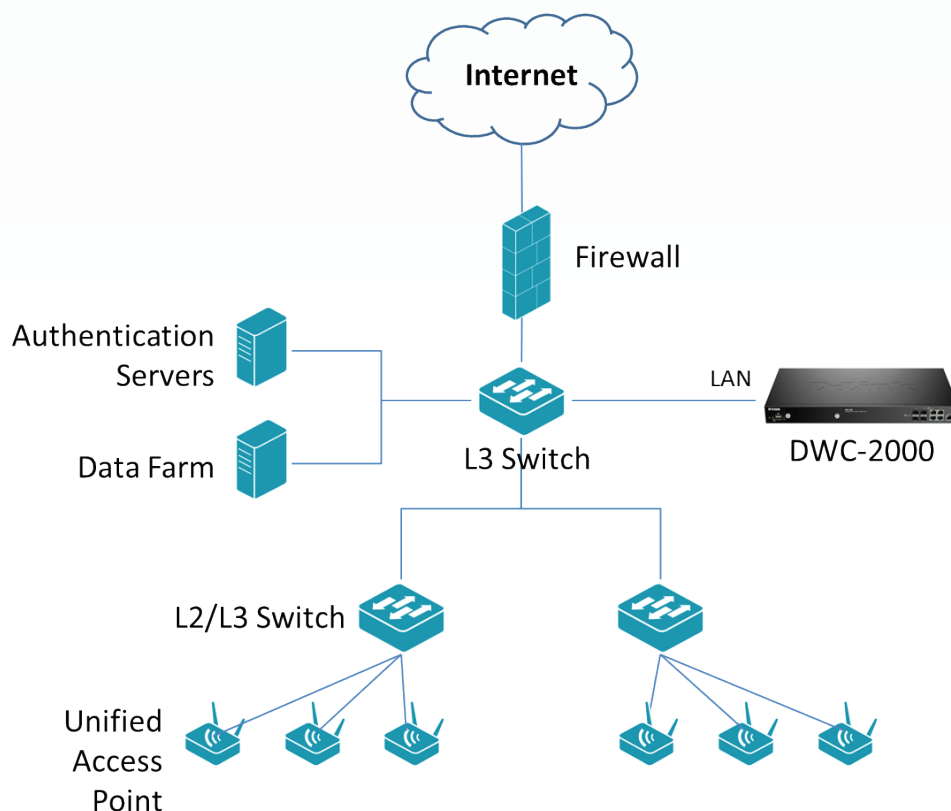
Comprehensive Security

The DWC-2000 provides a comprehensive wireless security solution for easy integration into any network. With advanced security features, traffic encryption and decryption processing method. The Wireless Intrusion Detection System (WIDS) featured in the DWC-2000 detects rogue access points, rogue clients, man-in-the-middle attack and can anticipate wireless threats, preventing potential breaches and illegal access before any damage is done to the network. In addition to fundamental wireless security, the Captive Portal feature allows you to block clients from accessing the network until their identities are verified. The Captive Portal authentication servers cover local, RADIUS, LDAP, POP3 and Window Active Directory. This double-layer authentication and authorization establish a robust security fence to avoid attacks from internal networks. The wireless controller comes with basic security options for its successful operation.

High Scalability, Availability, and Flexibility

To address today's fast-changing corporate structures, the DWC-2000 Wireless Controller offers flexible optional features: the administrator can purchase D-Link's Business Wireless Plus license packs to upgrade the DWC-2000's capabilities. D-Link offers a range of DWC-2000 managed AP license pack upgrades to increase the number of manageable access points, depending on need. By default, the DWC-2000 manages up to 64 access points, but this can be expanded to 256 access points per controller. With the DWC-2000, as business grows, so does its wireless network.

Network Implementation within L2/L3 Network in Medium to Large Environments



Technical Specifications

Interface

Ports	• 4 10/100/1000 RJ-45 and 4 100/1000 SFP Combo ports
USB	• 2 USB 2.0 ports
Console Port	• 1 RJ-45
Extension Slot	• 1 Hard disk driver slot

Performance

Maximum Access Points per Unit	• 64/ 256 ¹ (default/ upgrade)
Maximum Access Points per Cluster	• 256/ 1024 ¹ (default/ upgrade)
Concurrent Captive Portal Authentication Users	• 6300

Access Point Management

Model of Managed APs	• DWL-8610AP • DWL-8600AP	• DWL-6600AP • DWL-3600AP	• DWL-2600AP
AP Discovery & Control	• Layer-2	• Layer-3	
AP Monitoring	• Managed AP • Rogue AP	• Authentication Fail AP • Standalone AP	
Client Monitoring	• Authenticated Client • Rogue Client	• Authentication Fail Client • Ad-hoc Client	
Centralized RF/ Security Policy Management	• Supported		

Roaming

Roaming	• Fast Roaming • Intra-controller/ Inter-controller Roaming • Intra-subnet/ Inter-subnet Roaming	• Mobility -Layer 2 / Layer 3 Roaming
---------	--	--

Security

Wireless Security	• WEP • Dynamic WEP • WPA Personal/Enterprise • 802.11i WPA2 Personal/Enterprise	• WPA Ciphers - TKIP - CCMP (AES) - TKIP and CCMP (AES)	• EAP-MD5, EAP-TLS, EAP-TTLS, EAP-FAST, EAP-SIM, PEAP-GTC • WEP
Wireless Intrusion Detection & Prevention System (WIDS)	• Rogue and Valid AP Classification	• Rogue AP Mitigation	
LAN Security	• 802.1x port-based access control and guest VLAN		
Authentication	• Captive Portal	• MAC Authentication	

VLAN

VLAN Group	• Up to 255 entries
802.1q VLAN Tagging	• Supported
Subnet-based VLAN	• Supported
Port-based VLAN	• Supported

Technical Specifications		
IP Mode	• IPv4 / IPv6 mode	
DHCP	• Server, client, and relay	
Quality of Service (QoS)	<ul style="list-style-type: none"> • Wireless Multimedia (WMM) • Spectralink Voice Priority (SVP) • SIP • H.323 • QoS Policy 	<ul style="list-style-type: none"> • QoS - CoS - ToS - DSCP
Bandwidth Management	• Minimum Bandwidth Guarantee	• Bandwidth Control
AP firmware management	• AP firmware version auto-detection and dispatch	
AP configuration management	• Centralized RF/ security policy settings Maximum support 64 AP Profiles	
Layer 2 Multicast	• Supported	
User Account Management		
Permanent Account Authentication Method	<ul style="list-style-type: none"> • Local Database • External RADIUS • External LDAP 	<ul style="list-style-type: none"> • External POP3 • External Windows Active Directory (wired only)
Temporary Account Authentication Method	• Local Database	
Temporary Account Creation	• Single or batch account generation by system with customized active or usage expired time	
Payment Gateway	<ul style="list-style-type: none"> • Authorize.net • Paypal 	<ul style="list-style-type: none"> • SecurePay • World Pay
System Management		
Management	<ul style="list-style-type: none"> • HTTP/HTTPS -Web-based User Interface • Command Line Interface • SNMP v1, v2c, v3 • AP Load Balancing Utilization 	<ul style="list-style-type: none"> • SSH(v2) • TFTP • 802.11h spectrum and Transmit Power Management • 802.11d Country Code
Physical/Environmental		
Power Supply	• 100-240 V AC, 50-60 Hz Internal power supply	
Max. Power Consumption	• 26.95 W	
Dimensions	• 440 x 310 x 44 mm (17.3 x 12.2 x 1.73 inches)	
Operating Temperature	• 0 to 40 °C (32 to 104 °F)	
Storage Temperature	• -20 to 70 °C (-4 to 158 °F)	
Operating Humidity	• 5% to 95%, Non-condensing	
Emission (EMI)	• FCC Class A, CE Class A, C-Tick, IC	
Safety	• cUL, LVD (EN60950-1)	
Diagnostic	• Capture Packets	• System Check • Network Tools

Ordering Information

Compatible D-Link Wireless Access Points

DWL-8610AP	Unified Concurrent Dual-band Access Point 802.11ac
DWL-8600AP	Unified Concurrent Dual-band Access Point 802.11n/g/b/a
DWL-6600AP	Unified Concurrent Dual-band Access Point 802.11n/g/b/a
DWL-3600AP	Unified Concurrent Single-band Access Point 802.11n/g/b
DWL-2600AP	Unified Concurrent Single-band Access Point 802.11n/g/b

Compatible D-Link Business Wireless Plus License

DWC-2000-AP32/DWC-2000-AP32-LIC	Enable management of 32 additional APs
DWC-2000-AP64/DWC-2000-AP64-LIC	Enable management of 64 additional APs
DWC-2000-AP128/DWC-2000-AP128-LIC	Enable management of 128 additional APs

¹ The number of additional APs available for management depends on your license type.

Updated November 18, 2013