

D-Link

Quick Installation Guide

This product works with the following operating system software: **Windows XP, Windows 2000, Windows Me, Windows 98SE**



DWL-G520

Xtreme G 2.4GHz
Wireless PCI Adapter

Before You Begin

You must have at least the following:

- A desktop computer with an available 32-bit PCI slot
- At least a 300 MHz processor and 32MB of memory
- An 802.11g or 802.11b Access Point (for Infrastructure Mode) or another 802.11g or 802.11b wireless adapter (for Ad-Hoc; Peer-to-Peer networking mode.)

Check Your Package Contents

These are the items included with your DWL-G520 purchase:



DWL-G520 Xtreme G 2.4GHz Wireless PCI Adapter



CD-ROM (containing Drivers, Manual and Warranty)

If any of the above items are missing, please contact your reseller.

1

Insert the D-Link CD-ROM Into Your Computer

Turn on the computer and **Insert** the **D-Link Xtreme G DWL-G520 Driver CD** in the CD-ROM drive.

The step-by-step instructions that follow are shown in **Windows XP**. The steps and screens are similar for the other Windows operating systems



Do **NOT** install the **DWL-G520 Wireless PCI Adapter** into your computer before installing the driver software from the D-Link CD!

1 Continued...

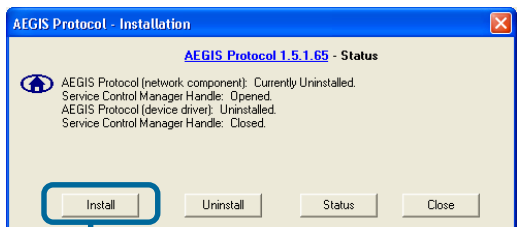
The Install Screen will appear.

If the CD Autorun function does not automatically start on your computer , type "D:\WPA\ageisl2.exe" for Windows ME/98 or "D:\WPA\ageisl5.exe" for Windows XP/ 2000. If it does start, proceed to the next screen. **The letter "D" represents the letter of the CD-ROM drive. Your CD-ROM drive may be a different drive letter.**

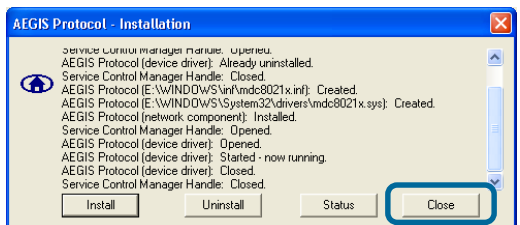
The WPA Supplicant is optional. Install this only if you want to use the WPA security protocol. You may skip this step if you do not plan to implement WPA in your network. (See Appendix, Page 6 for more information on WPA.)



Choose **Windows XP/2000** or **Windows ME/98SE**



Click **Install**



Click **Close**

1

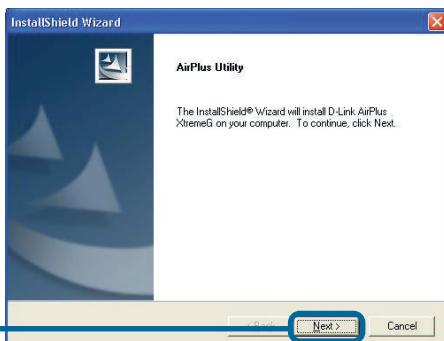
Continued...

If the CD Autorun function does not automatically start on your computer , type "D:\Drivers\setup.exe." If it does start, proceed to the next screen.

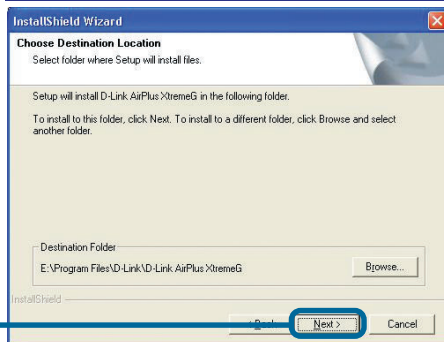
Click **Install Drivers**



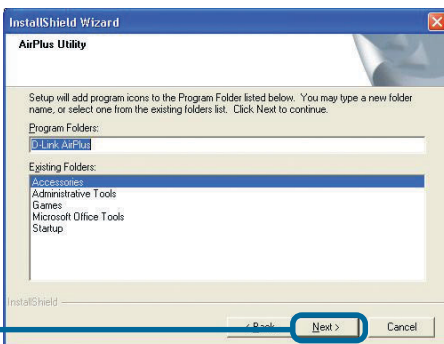
Click **Next**



Click **Next**

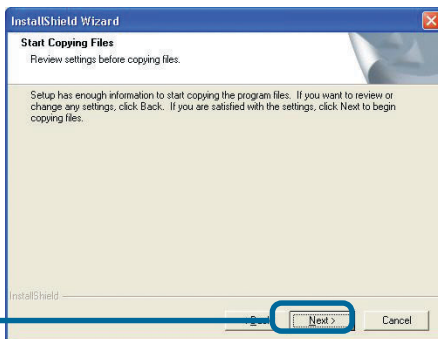
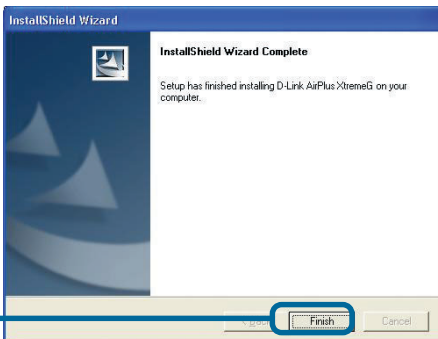


Click **Next**



1

Continued...

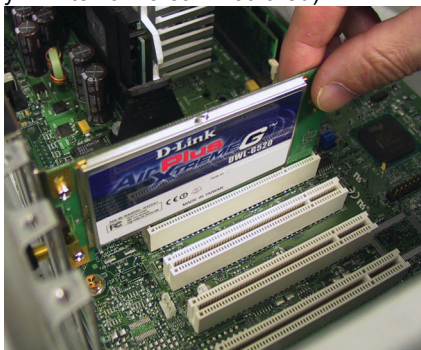
Click **Next**Click **Finish****Shut down your computer**

Remember to leave the DWL-G520 Driver CD in the CD-ROM drive.

2

Installing the DWL-G520 Wireless PCI Adapter in Your Computer

- A. Make sure to turn off your computer and unplug the power cord.** Remove the back cover of the computer.
- B. Install the DWL-G520 carefully** and firmly seat it into an available PCI slot (which is usually “white” or “cream” colored).



To avoid damage caused by static electricity, make sure to properly ground yourself by first touching a metal part of your computer to discharge any static electricity before working with the DWL-G520 Wireless PCI Adapter.

- C.** Secure the DWL-G520 back panel shield with a screw.
- D.** Replace the computer's cover.
- E.** Place the computer back in its normal position.
- F.** Attach the DWL-G520's antenna to the socket on the back panel shield.

2

Continued...

Screw Mount

The screw to secure the PCI Adapter to the back of your computer will fit in this slot

Antenna

Used to wirelessly connect to WiFi networks.

32-bit connector

This is the connector that fits into the PCI slot on your computer's motherboard

Back Panel Shield

Once properly installed, this panel should be at the back of your computer.

Link/Activity LED

Indicates that the DWL-G520 is properly installed when the computer is on and blinks when data is being transmitted

3

Restart Your Computer

When you restart your computer this **Found New Hardware Wizard (Windows XP)** screen will appear:

Select **Install the software automatically (Recommended)**

Click **Next**



Click **Finish** to finalize the installation.



4

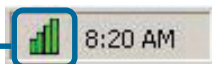
Your Installation is Complete!

After you've continued in Windows 2000, ME, or 98SE, the D-Link *AirExtreme* DWL-G520 **Configuration Utility** will automatically start and the utility icon will appear in the bottom right hand corner of the desktop screen (systray). **If this icon appears GREEN, then you have successfully installed the DWL-G520, are connected to a wireless network and are ready to communicate!**

If the utility icon does not appear, double-click the **shortcut icon** that has appeared on your desktop.



Double-click the **utility icon** to use the configuration utility.



Appendix

Wi-Fi Protected Access (WPA), a Wi-Fi standard that was designed to improve upon the security features of WEP. The technology is designed to work with existing Wi-Fi products that have been enabled with WEP (i.e., as a software upgrade to existing hardware), but the technology includes two improvements over WEP:

- 1.) Improved data encryption through Temporal Key Integrity Protocol (TKIP)
- 2.) User authentication using Extensible Authentication Protocol (EAP) via RADIUS

Note that WPA is an interim standard that will be replaced with the IEEE's 802.11i standard upon its completion.

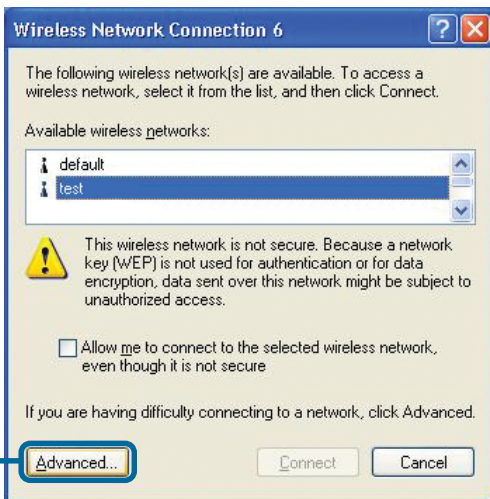
WPA - Wi-Fi Protected Access authorizes and authenticates users onto the wireless network. WPA uses stronger security than WEP and is based on a key that changes automatically at a regular interval. This mode requires a RADIUS server in the network.

WPA-PSK - Pre-Shared Key mode means that the wireless client and the router must have the same passphrase in order to establish the wireless connection. A RADIUS server is **not** required with PSK.

Appendix

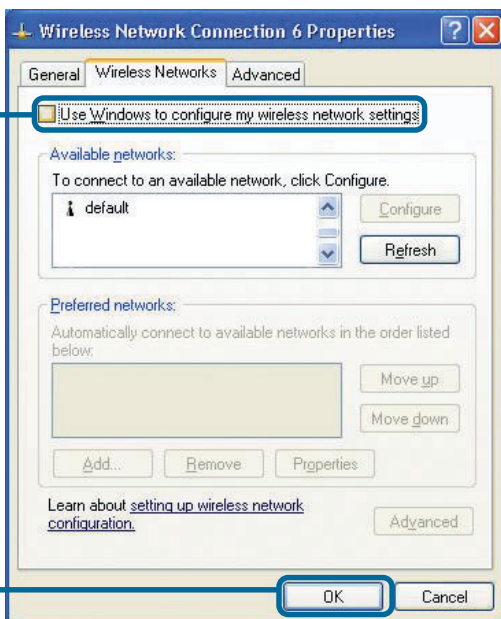
For Windows XP, if you wish to use the Xtreme G utility, please do the following steps.

Click the **XP Networking icon** to use the Zero Configuration Wireless Settings.



Click **Advanced**

Uncheck "Use Windows to configure my wireless network settings."



Click **OK**

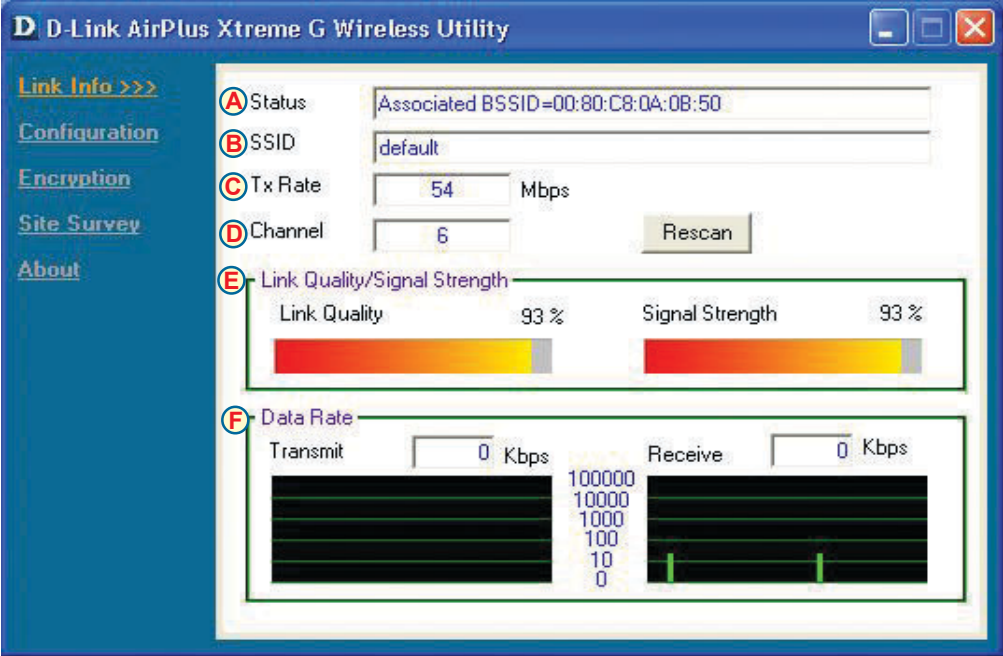
Appendix (Continued)

Using the Configuration Utility

A. Status: Displays the MAC Address of the Access Point that is associated with the DWL-G520.

B. SSID: The Service Set Identifier is the name assigned to the wireless network. The factory SSID setting is set to **default**.

C. TxRate: The default setting is **Auto**; meaning, TxRate settings are automatically determined by the DWL-G520 depending on the distance from the access point.



D. Channel: Displays the channel information. By default, the channel is set to 6. Please note that the DWL-G520 will automatically adjust channel depending on the Access Point.

E. Link Quality / Signal Strength: Displays the Link Quality for the DWL-G520 wireless connection to the access point. The Signal Strength represents the wireless signal between the access point and the DWL-G520. The percentage coincides with the graphical bar.

F. Data Rate: Graphically displays the statistics of data transmitted and received.

G. SSID: The Service Set Identifier is the name assigned to the wireless network. The factory SSID setting is set to **default**. Make changes here to match the SSID on existing Wireless Router or Access Point.

H. Wireless Mode: The factory setting is set to **Infrastructure**. Ad-Hoc mode is used for peer-to-peer networking.

I. Channel: By default, the channel is set to **6**. Channel selection is automatically adjusted by the DWL-G520 depending on the channel setting of the access point selected for association. To change the channel settings, the **Wireless Mode** must be set to **Ad-hoc**.

The screenshot shows the 'D-Link AirPlus Xtreme G Wireless Utility' window. On the left is a blue sidebar with navigation links: 'Link Info.', 'Configuration >>>', 'Encryption', 'SiteSurvey', and 'About'. The 'Configuration >>>' link is highlighted. The main area contains five configuration items, each with a lettered icon in a circle: 'G SSID' (text field with 'default'), 'H Wireless Mode' (dropdown menu with 'Infrastructure'), 'I Channel' (dropdown menu with '6'), 'J Tx Rate' (dropdown menu with 'Auto'), and 'K Power Mode' (dropdown menu with 'Continuous Access Mode'). At the bottom are 'Apply' and 'Cancel' buttons.

J. TxRate: You can adjust the transmission rate to get the best signal possible depending on your usage and your environment.

K. Power Mode: By default, Power Mode is set to Continuous Access Mode. **Continuous Access Mode** — this default setting consumes the most power. **Maximum Power Save** — this setting consumes the least power. **Power Save** — this setting consumes a moderate amount of power.

IP Address Configuration

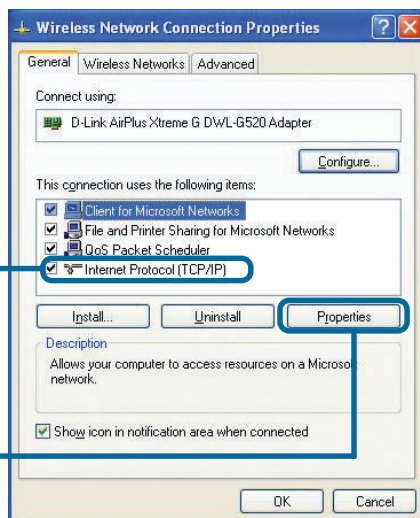
To connect to a network, **make sure the proper network settings are configured for DWL-G520.**

For Microsoft Windows XP:

Go to **Start > right click on My Network Places > select Properties > Double-click on the Network Connection** associated with the DWL-G520.

Click **Internet Protocol (TCP/IP)**

Click **Properties**



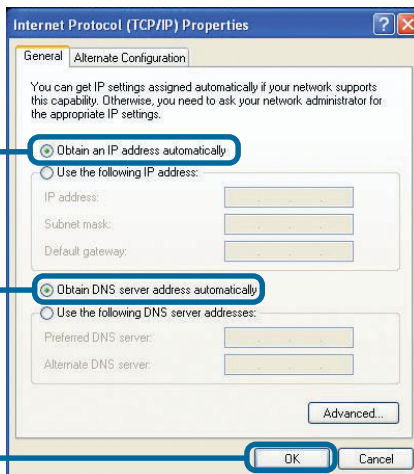
Dynamic IP Address setup

Used when a **DHCP server** is available on the local network. (i.e. Router)

Select **Obtain an IP address automatically** (if the Wireless Router or Access Point has DHCP server enabled)

Select **Obtain DNS server address automatically**

Click **OK**



Static IP Address setup

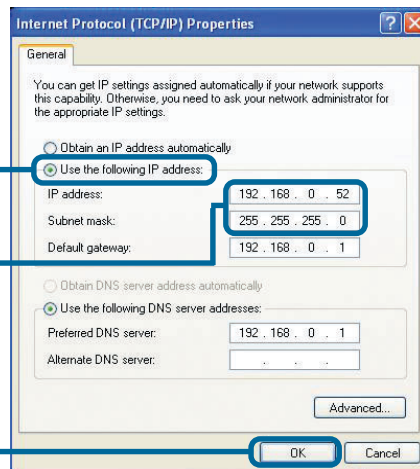
Used when a **DHCP server** is not available on the local network.

Select **Use the following IP address**

IP address: **192.168.0.52**
Subnet mask: **255.255.255.0**

Input a static IP address in the same range as the Wireless Router or Access Point.

Click **OK**

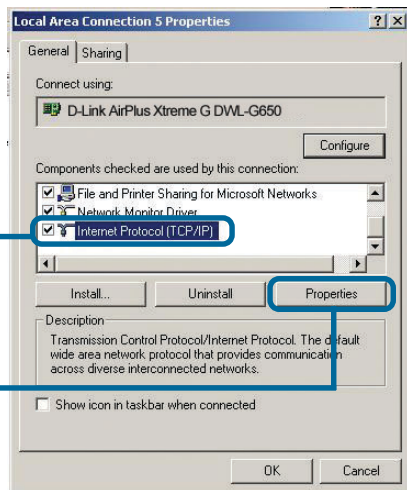


For Windows 2000 users:

Go to **Start > Settings > Network and Dial-up Connections** > Double-click on the **Local Area Connection** associated with the DWL-G520 > select **Properties**

Click **Internet Protocol (TCP/IP)**

Click **Properties**



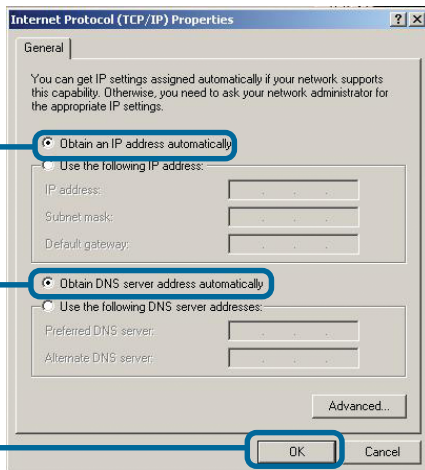
Dynamic IP Address setup

Used when a **DHCP server** is available on the local network. (i.e. Router)

Select **Obtain an IP address automatically** (if the Wireless Router or Access Point has DHCP server enabled)

Select **Obtain DNS server address automatically**

Click **OK**



Static IP Address setup

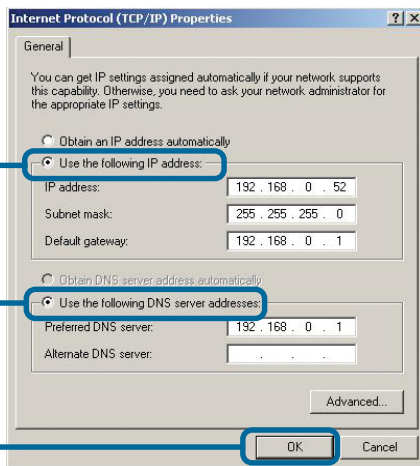
Used when a **DHCP server** is not available on the local network.

Select **Use the following IP address**

IP address: **192.168.0.52**
Subnet mask: **255.255.255.0**

Input a static IP address in the same range as the Wireless Router or Access Point.

Click **OK**



Technical Support

You can find software updates and user documentation on the D-Link website.

D-Link provides free technical support for customers within the United States and within Canada for the duration of the warranty period on this product.

U.S. and Canadian customers can contact D-Link technical support through our website, or by phone.

Tech Support for customers within the United States:

D-Link Technical Support over the Telephone:

(877) 453-5465

24 hours a day, seven days a week.

D-Link Technical Support over the Internet:

<http://support.dlink.com>

[email:support@dlink.com](mailto:support@dlink.com)

Tech Support for customers within Canada:

D-Link Technical Support over the Telephone:

(800) 361-5265

Monday to Friday 8:30am to 9:00pm EST

D-Link Technical Support over the Internet:

<http://support.dlink.ca>

[email:support@dlink.ca](mailto:support@dlink.ca)

