

D-Link Quick Installation Guide



DSL-200

D-Link USB
ADSL Modem

Before Your Begin

This Quick Installation Guide gives step-by-step instructions for setting up the D-Link DSL-200 ADSL Modem. For more detailed information about the ADSL Modem, its components, making network connections and technical specifications, please refer to the User's Guide on the CD-ROM included with your ADSL Modem.

Check Your Package Contents

These are the items included with your DSL-200 purchase:



- **DSL-200 ADSL Modem (USB interface)**



- **CD-ROM (containing Driver and User's Guide)**



- **Quick Installation Guide**



- **USB Cable**



- **RJ-11 Cable**

If any of the above items are missing, please contact your reseller.

1

Install Modem Driver

Before starting the software setup process, close all windows and quit any application programs you are running. The installation procedure presented here is the same for Mac 8.6, Mac OS 9.x and Mac OS X 10.1.x and above.



You need to install the device drivers first and then perform the hardware installation steps below.

1. Insert the DSL-200 Installation CD into the CD-ROM drive. To view the contents of the CD, open CD ROM from the desktop. Select the folders “ Mac ” on the CD.
2. In the Device Driver Folder, locate the Installer application and invoke it by double-clicking on it.



3. The “Welcome” screen will appear. Click **Next** to proceed.



4. The “License Agreement” screen will appear. Click **Accept**.



5. When all necessary files have been copied, the “Finished” screen will appear. Click **Finish**. Mac OSX 10.x operating systems will request restart. Mac 9.x does not require a restart



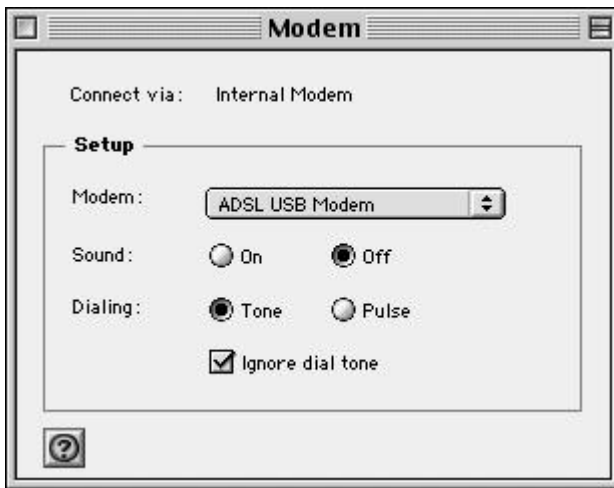
6. The USB driver is now installed. Before using your USB ADSL modem, connect the modem to the computer using the proper USB device cable and connect the DSL line to the USB ADSL modem.

MAC OS 9.x

If you have not done so yet, please install the PPPoA VC driver first (refer to the Install Guide). Then connect the USB ADSL modem to the computer using the proper USB device cable. Connect the ADSL line to the USB ADSL modem too.

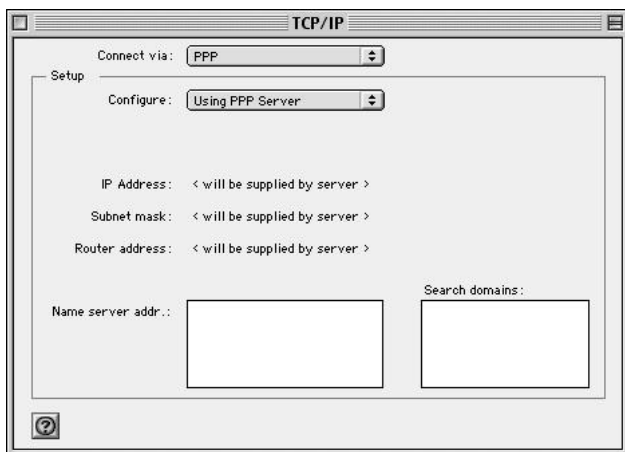
TCP/IP settings are set up automatically during the software installation process. The following procedure may be used to change TCP/IP settings, if necessary.

1. Click on the **Apple** icon (🍏), then select **Control Panels à Modem**
2. Make sure that the *ADSL USB Modem* appears in the **Modem:** drop-down list. You can modify the dialup settings such as dialing sound and type.



3. Close the “Modem” window (click on the top left corner). You will be prompted to save the current configuration. Click **Save**.
4. Next, click again on the **Apple** icon (🍏), and then select **Control Panels à TCP/IP**.

5. The “TCP/IP” window will appear.

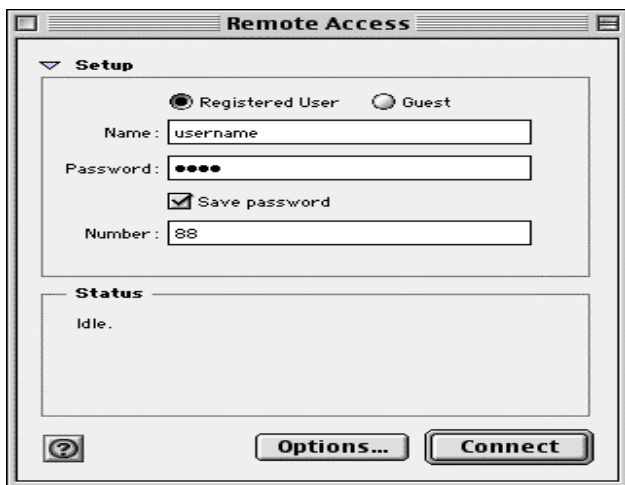


- Make sure that **PPP** is selected in the *Connect via:* drop-down list.
- The *Configure:* drop-down list should show **Using DHCP Server**.

6. Close the “TCP/IP” window. You will be prompted to save the current configuration. Click **Save**.

7. Click on the **Apple** icon (🍏), and then select **Control Panels** à **Remote Access**.

8. The “Remote Access” window lets you set up the remote login parameters.





Note: If you do not see the *Name* and *Password* fields, click on the small triangle to the left of the word **Setup**.

- Enter your userid in the *Name* field.
 - Type in your password in the *Password* field.
 - Choose whether or not to have your password saved by checking or unchecking the *Save Password* check box.
 - Enter any number in the *Number* field.
 - You may wish to use the **Options** button to set up some additional connection and protocol settings, or accept the default. Click **OK** when done with the “Options” window.
9. Close the “Remote Access” window. You will be prompted to save the current configuration. Click **Save**.

MAC OS X

If you have not done so yet, please install the PPPoA VC driver first (refer to the Install Guide). Then connect the USB ADSL modem to the computer using the proper USB device cable. Connect the ADSL line to the USB ADSL modem too.

TCP/IP settings are set up automatically during the software installation process. The following procedure may be used to change TCP/IP settings, if necessary.

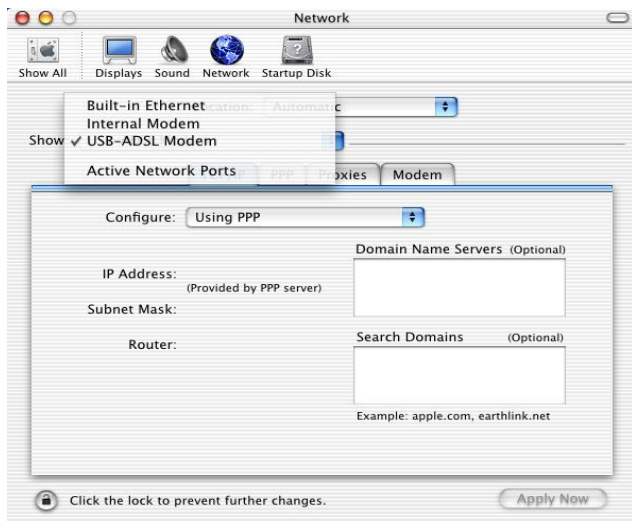
1. Open **System Preferences** and select **Network**.



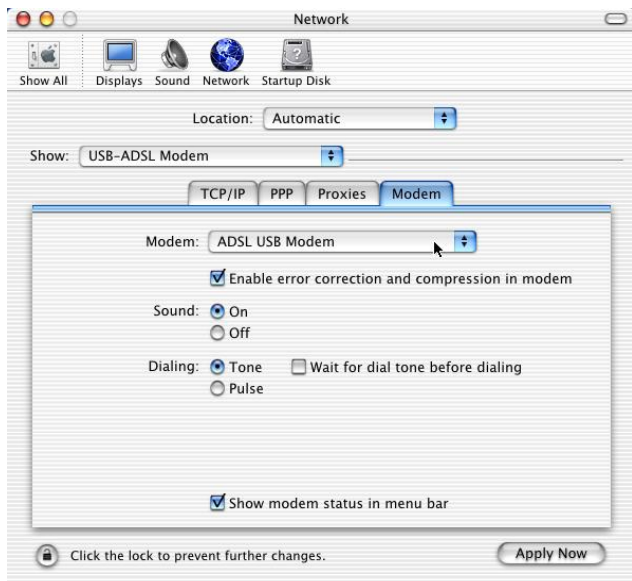
2. A window should pop up indicating that a new port has been detected. It will be named **USB-ADSL Modem**. Click **OK**.



3. From the **Show** pull down menu, select the new port, **USB-ADSL Modem**.



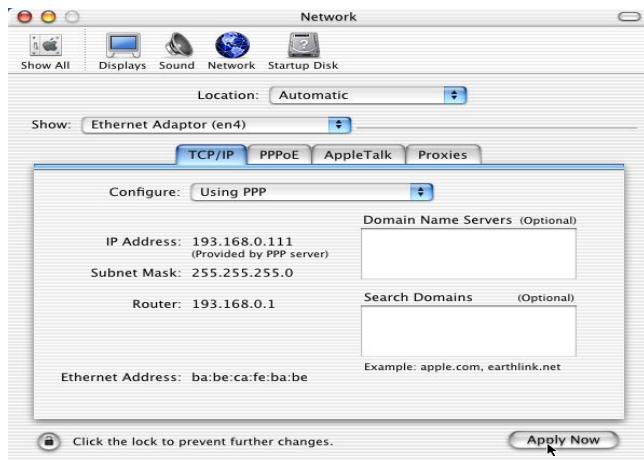
4. Select the **Modem** tab. In the **Modem** pull down menu, select **ADSL USB Modem**. Uncheck **Wait for dial tone before dialing**. Check **Show Modem Status in menu bar**.



5. Select the **PPP** tab. Enter your username (account name). If you want to make your password permanently saved, enter it and check **Save password**. Configure any other **PPP Options** as desired.




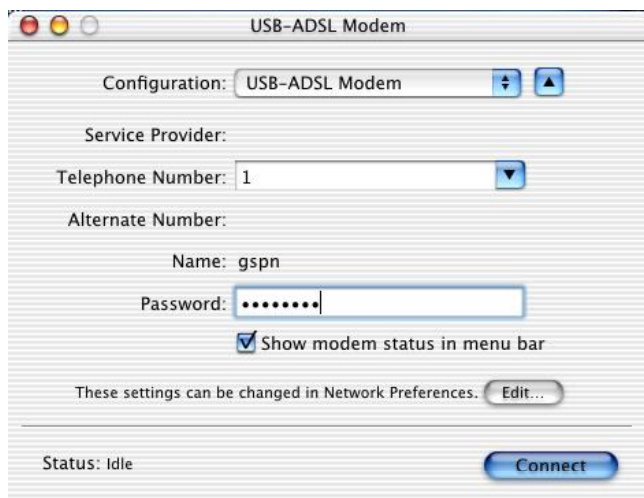
6. Select the **TCP/IP** tab and select the way you would like to obtain your IP address. The recommended way is **Configure Using PPP**.



7. Click **Apply Now**. Close the System Preferences application. The installation and configuration is now complete.

Establishing a Connection

1. Open the Internet Connection application (which looks like a modem dialer) by clicking the  icon at the top right side of the screen and selecting **Open Internet Connection** from the menu.
2. In the **Configuration** drop down menu, select your adapter's port **USB-ADSL Modem** and fill in the password if it was not provided in Step 5 above and click **Connect**.



3. The Internet Connection application will display the progress of the connection. Upon completion, you will be connected to the Internet. The **Disconnect** button may be used to remove the connection, effectively disconnecting from the Internet.