



DSL-6740U

VDSL/Ethernet Router with Wi-Fi and Built-in Switch

BEFORE YOU BEGIN

Delivery Package

- Wireless router DSL-6740U
- Power adapter DC 12V/1A
- RJ-11 telephone cable
- Straight-through Ethernet cable (CAT 5E)
- Splitter
- “*Quick Installation Guide*” (brochure).

If any of the items are missing, please contact your reseller.

The “*User Manual*” and “*Quick Installation Guide*” documents in Russian and English are available on D-Link website (see <ftp://dlink.ru/pub/VDSL2/DSL-6740U/Description/>).

! Using a power supply with a different voltage rating than the one included will cause damage and void the warranty for this product.

Default Settings

IP address of router	192.168.1.1
Username (login)	admin
Password	admin
Name of wireless network (SSID)	DSL-6740U

System Requirements and Equipment

- A computer with any operating system that supports a web browser.
- A web browser to access the web-based interface of the router:
 - Apple Safari 5 and later
 - Google Chrome 5 and later
 - Microsoft Internet Explorer 7 and later
 - Mozilla Firefox 5 and later
 - Opera 10 and later.
- A NIC (Ethernet or Wi-Fi adapter) to connect to the router.
- An 802.11b, g, or n Wi-Fi adapter to create a wireless network.

CONNECTING TO PC

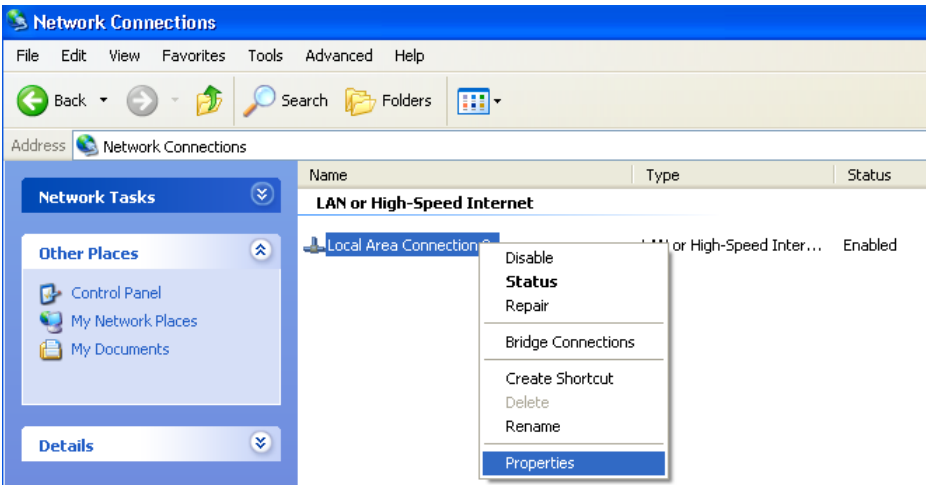
PC with Ethernet Adapter

1. Make sure that your PC is powered off.
2. Connect an Ethernet cable between any of four Ethernet ports located on the back panel of the router and the Ethernet port of your PC.
3. ***To connect the router to a DSL line:*** connect a phone cable between the DSL port of the router and the **MODEM** port of the splitter. Connect your phone to the **PHONE** port of the splitter. Then connect another phone cable between a phone jack and the **LINE** port of the splitter.
4. ***To connect the router to an Ethernet line:*** connect the Ethernet cable between any of four Ethernet ports located on the back panel of the router and the Ethernet line.
5. Connect the power cord to the power connector port on the back panel of the router, then plug the power adapter into an electrical outlet or power strip.
6. Turn on the router by pressing the **ON/OFF** button on its left side panel.
7. Turn on your PC and wait until your operating system is completely loaded.

Now you should configure your PC to obtain an IP address automatically (as DHCP client).

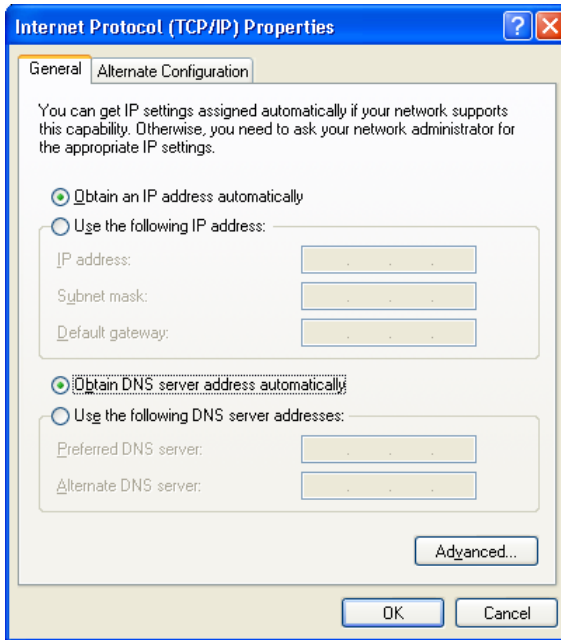
Obtaining IP Address Automatically in OS Windows XP

1. Click the **Start** button and proceed to the **Control Panel > Network and Internet Connections > Network Connections** window.
2. In the **Network Connections** window, right-click the relevant **Local Area Connection** icon and select the **Properties** line in the menu displayed.



3. In the **Local Area Connection Properties** window, on the **General** tab, select the **Internet Protocol (TCP/IP)** line. Click the **Properties** button.

4. Select the **Obtain an IP address automatically** and **Obtain DNS server address automatically** radio buttons. Click the **OK** button.

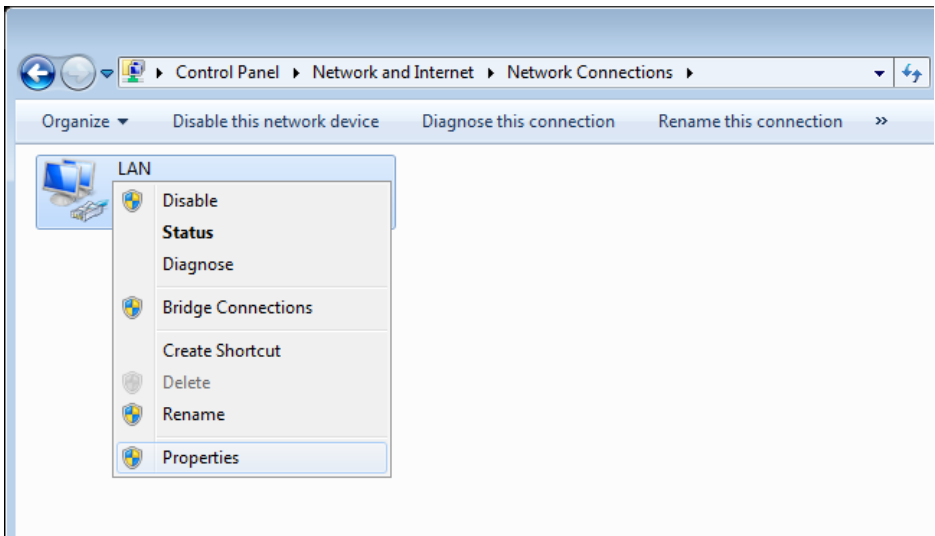


5. Click the **OK** button in the connection properties window.

Now your computer is configured to obtain an IP address automatically.

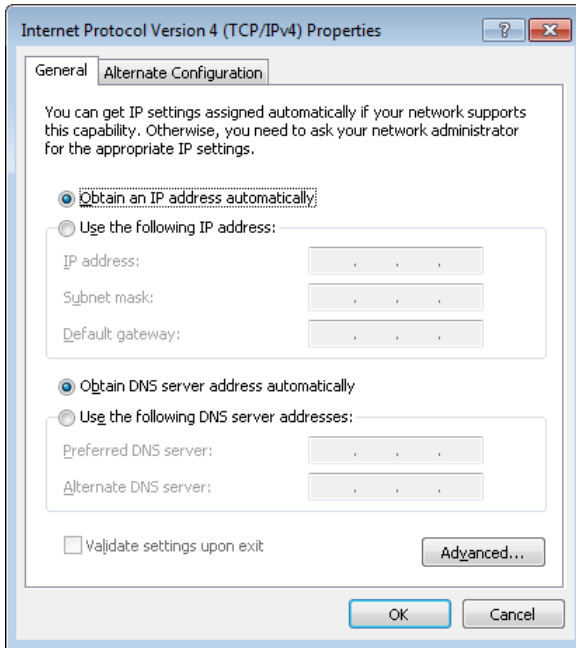
Obtaining IP Address Automatically in OS Windows 7

1. Click the **Start** button and proceed to the **Control Panel** window.
2. Select the **Network and Sharing Center** section. (If the Control Panel has the category view (the **Category** value is selected from the **View by** drop-down list in the top right corner of the window), choose the **View network status and tasks** line under the **Network and Internet** section.)
3. In the menu located on the left part of the window, select the **Change adapter settings** line.
4. In the opened window, right-click the relevant **Local Area Connection** icon and select the **Properties** line in the menu displayed.



5. In the **Local Area Connection Properties** window, on the **Networking** tab, select the **Internet Protocol Version 4 (TCP/IPv4)** line. Click the **Properties** button.

6. Select the **Obtain an IP address automatically** and **Obtain DNS server address automatically** radio buttons. Click the **OK** button.



7. Click the **OK** button in the connection properties window.
Now your computer is configured to obtain an IP address automatically.

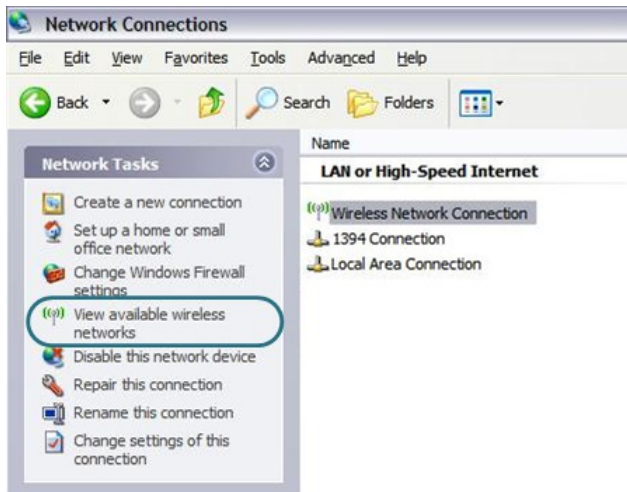
PC with Wi-Fi Adapter

1. ***To connect the router to a DSL line:*** connect a phone cable between the DSL port of the router and the **MODEM** port of the splitter. Connect your phone to the **PHONE** port of the splitter. Then connect another phone cable between a phone jack and the **LINE** port of the splitter.
2. ***To connect the router to an Ethernet line:*** connect the Ethernet cable between any of four Ethernet ports located on the back panel of the router and the Ethernet line.
3. Connect the power cord to the power connector port on the back panel of the router, then plug the power adapter into an electrical outlet or power strip.
4. Turn on the router by pressing the **ON/OFF** button on its left side panel.
5. Turn on the router's wireless connection by pressing the **WLAN** button on its left side panel.
6. Turn on your PC and wait until your operating system is completely loaded.
7. Turn on your Wi-Fi adapter. As a rule, modern notebooks with built-in wireless NICs are equipped with a button or switch that turns on/off the wireless adapter (refer to your PC documents). If your PC is equipped with a pluggable wireless NIC, install the software provided with your Wi-Fi adapter.

Now you should configure your Wi-Fi adapter.

Configuring Wi-Fi Adapter in OS Windows XP

1. Click the **Start** button and proceed to the **Control Panel > Network and Internet Connections > Network Connections** window.
2. Select the icon of the wireless network connection and make sure that your Wi-Fi adapter is on.



3. Search for available wireless networks.
4. In the opened **Wireless Network Connection** window, select the wireless network **DSL-6740U** and click the **Connect** button.

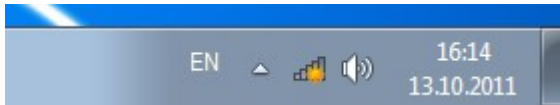
After that the **Wireless Network Connection Status** window appears.



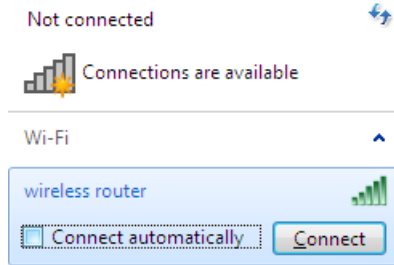
If you perform initial configuration of the router via Wi-Fi connection, note that immediately after changing the wireless default settings of the router you will need to reconfigure the wireless connection using the newly specified settings.

Configuring Wi-Fi Adapter in OS Windows 7

1. Click the **Start** button and proceed to the **Control Panel** window.
2. Select the **Network and Sharing Center** section. (If the Control Panel has the category view (the **Category** value is selected from the **View by** drop-down list in the top right corner of the window), choose the **View network status and tasks** line under the **Network and Internet** section.)
3. In the menu located on the left part of the window, select the **Change adapter settings** line.
4. In the opened window, select the icon of the wireless network connection and make sure that your Wi-Fi adapter is on.
5. To open the list of available wireless networks, select the icon of the wireless network connection and click the **Connect To** button or left-click the network icon in the notification area located on the right side of the taskbar.



- In the opened window, in the list of available wireless networks, select the wireless network **DSL-6740U** and click the **Connect** button.



Open Network and Sharing Center

- Wait for about 20-30 seconds. After the connection is established, the network icon will be displayed as the signal level scale.



If you perform initial configuration of the router via Wi-Fi connection, note that immediately after changing the wireless default settings of the router you will need to reconfigure the wireless connection using the newly specified settings.

CONFIGURING ROUTER

Connecting to Web-based Interface

1. Start a web browser.
2. In the address bar of the web browser, enter the IP address of the router (by default, the following IP address is specified: **192.168.1.1**). Press the **Enter** key.



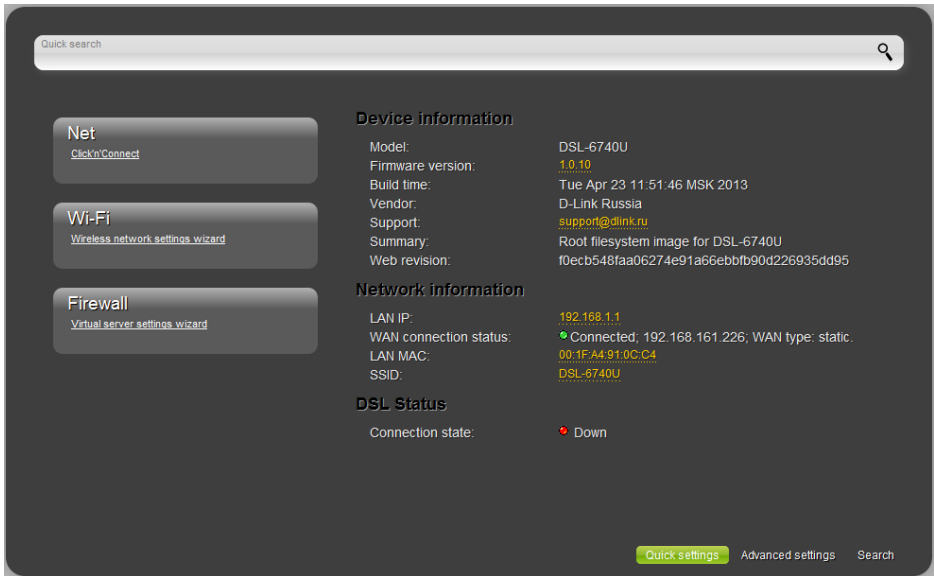
3. On the opened page, enter the username and password for the administrator account in the **Login** and **Password** fields correspondingly (by default, the following username and password are specified: **admin, admin**). Then click the **Enter** link.

A screenshot of the router's "Authorization" page. The page has a title "Authorization" at the top. Below the title are two input fields: "Login" with the text "admin" entered, and "Password" with several dots representing a masked password. At the bottom right of the form are two buttons: "Enter" and "Clear".

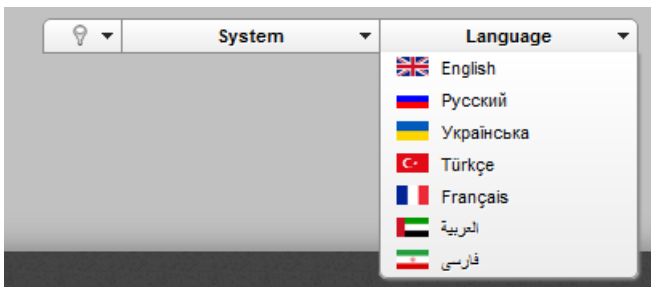
! If the error “The page cannot be displayed” (or “Unable to display the page”/“Could not connect to remote server”) occurs upon connecting to the web-based interface of the router, make sure that you have properly connected the router to your computer.


! For security reasons, it is strongly recommended to change the administrator password upon initial configuration of the router. To do this, click the **Advanced settings** link and proceed to the **System / Administrator password** page.

After successful registration the router's quick settings page opens.



The web-based interface of the router is multilingual. Select a needed language from the menu displayed when the mouse pointer is over the **Language** caption. You can change the language of the web-based interface in any menu item.



After selecting the language, the notification on unsaved changes will be displayed. Click the **Save** icon () to save the current language of the web-based interface as the default language.

The quick settings page displays general information on the router and its software, and data on the DSL connection state.

On the quick settings page, you can quickly get to some pages of the web-based interface or run a needed Wizard (use the links on the left side of the page).

From the quick settings page you can switch to the advanced settings section. To do this, click the **Advanced settings** link in the bottom right corner of the page.

Also you can find a specific page via search. To do this, enter the name of the page, wholly or partly, in the search bar in the top part of the web-based interface page, and then select a needed link in the search results.

Configuring Connection to the Internet



You should configure your WAN connection in accordance with data provided by your Internet service provider (ISP). Make sure that you have obtained all necessary information prior to configuring your WAN connection. Otherwise contact your ISP.

VDSL WAN Connection

1. Go to the **Net / WAN** page and click the **Add** button.
2. From the **Connection Type** drop-down list, select the needed value.
3. From the **Interface** drop-down list, leave the **VDSL PTM** value.

General settings

Connection Type: PPPoE

Interface: VDSL PTM

Name:*

Enable:

Direction: WAN

4. Specify a name for your connection (any name for easier identification) in the **Name** field.
5. For the **PPPoE** connection type, enter authorization data provided by your ISP in the **PPP** section (the username (login) in the **Username** field and the password in the **Password** and **Password confirmation** fields). If these data have not been provided by your ISP, select the **Without authorization** checkbox.

PPP

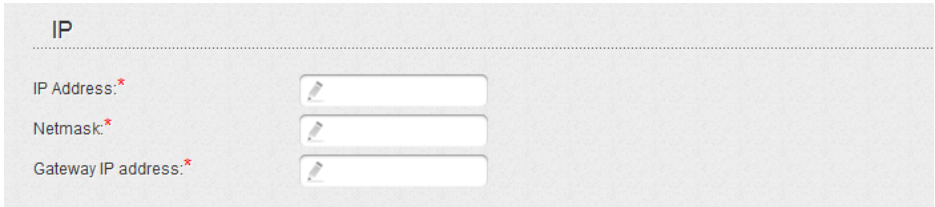
Username:*

Without authorization:

Password:*

Password confirmation:*

- For the **Static IP** connection type, fill in the **IP Address**, **Netmask**, and **Gateway IP address** fields in the **IP** section.

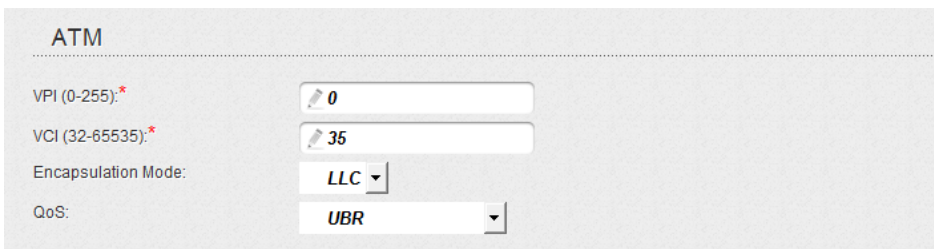


The screenshot shows a section titled "IP" with a dotted line separator. Below the title are three input fields, each with a pencil icon on the left. The first field is labeled "IP Address:*" and contains the number "0". The second field is labeled "Netmask:*" and contains the number "35". The third field is labeled "Gateway IP address:*" and is empty.

- Deselect the **NAT** checkbox in the **Miscellaneous** section if your ISP requires you to disable the network address translation function.
- Click the **Save** button.

ADSL WAN Connection

- Go to the **Net / WAN** page and click the **Add** button.
- From the **Connection Type** drop-down list, select the needed value.
- From the **Interface** drop-down list, select the **DSL(new)** value.
- Specify a name for your connection (any name for easier identification) in the **Name** field.
- In the **ATM** section, specify the **VPI** and **VCI** in the relevant fields, and then select a method of encapsulation from the **Encapsulation Mode** drop-down list.



The screenshot shows a section titled "ATM" with a dotted line separator. Below the title are four fields. The first is "VPI (0-255):*" with a pencil icon and a value of "0". The second is "VCI (32-65535):*" with a pencil icon and a value of "35". The third is "Encapsulation Mode:" with a dropdown menu showing "LLC". The fourth is "QoS:" with a dropdown menu showing "UBR".

- For the **PPPoE** and **PPPoA** connection types, enter authorization data provided by your ISP in the **PPP** section (the username (login) in the **Username** field and the password in the **Password** and **Password confirmation** fields). If these data have not been provided by your ISP, select the **Without authorization** checkbox.

PPP

Username:*

Without authorization:

Password:*

Password confirmation:*

- For the **IPoA** and **Static IP** connection types, fill in the **IP Address**, **Netmask**, and **Gateway IP address** fields in the **IP** section.

IP

IP Address:*

Netmask:*

Gateway IP address:*

- Deselect the **NAT** checkbox in the **Miscellaneous** section if your ISP requires you to disable the network address translation function.
- Click the **Save** button.

Ethernet WAN Connection

- Go to the **Advanced / Interface grouping** page.
- Place the mouse pointer on the router's LAN port that will be used as the WAN port and click the **Make WAN** line in the menu displayed. Click the **Save** link.
- Go to the **Net / WAN** page and click the **Add** button.
- From the **Connection Type** drop-down list, select the needed value.

- From the **Interface** drop-down list, select the value corresponding to the LAN port that will be used as the WAN port.

General settings

Connection Type:

Interface:

Name:*

Enable:

Direction: WAN

- Specify a name for your connection (any name for easier identification) in the **Name** field.
- For the **PPPoE** connection type, enter authorization data provided by your ISP in the **PPP** section (the username (login) in the **Username** field and the password in the **Password** and **Password confirmation** fields). If these data have not been provided by your ISP, select the **Without authorization** checkbox.

PPP

Username:*

Without authorization:

Password:*

Password confirmation:*

- For the **Static IP** connection type, fill in the **IP Address**, **Netmask**, and **Gateway IP address** fields in the **IP** section.

IP

IP Address:*

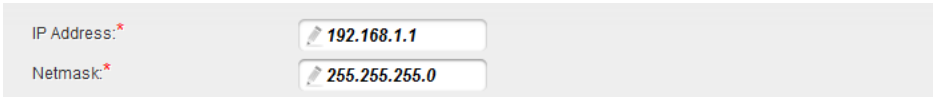
Netmask:*

Gateway IP address:*

- Deselect the **NAT** checkbox in the **Miscellaneous** section if your ISP requires you to disable the network address translation function.
- Click the **Save** button.

Configuring Local Area Network

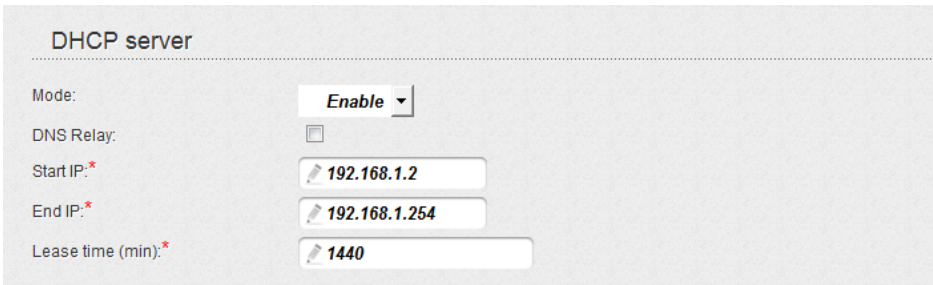
1. Go to the **Net / LAN** page. If needed, change the IP address of the router's LAN interface and the mask of the local subnet in the **IP Address** and **Netmask** fields. Then click the **Save** button.



IP Address:*

Netmask:*

2. By default, the DHCP server of the router is enabled. In the **DHCP server** section, you can change the parameters of the DHCP server. If you want to manually assign IP addresses to devices of your LAN, disable the DHCP server (select the **Disable** value from the **Mode** drop-down list).



DHCP server

Mode:

DNS Relay:

Start IP:*

End IP:*

Lease time (min):*

3. After specifying the DHCP server settings, click the **Save** button.

Configuring Wireless Network

By default, the wireless network of the router is open (it requires no password to access it). To avoid unauthorized access to your wireless local area network, change the default settings of the router.

Example of Wireless Settings

1. Go to the **Wi-Fi / Security settings** page.
2. Select the **WPA2-PSK** value from the **Network Authentication** drop-down list.

Network Authentication: **WPA2-PSK** ▼

Encryption Key PSK:

WPA2 Pre-authentication:

WPA Encryption settings

WPA Encryption: **AES** ▼

WPA renewal:*

3. Enter a key (a password that will be used to access your wireless network) in the **Encryption Key PSK** field. Use digits and Latin characters.
4. Select the **AES** value from the **WPA Encryption** drop-down list.
5. Click the **Change** button.

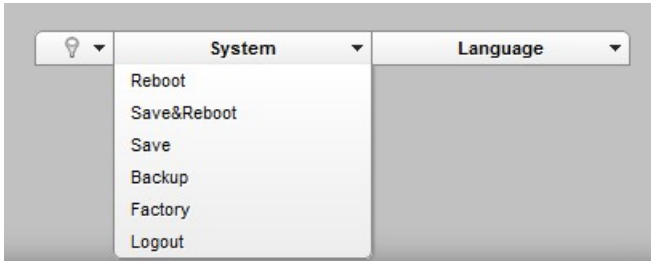


If you perform initial configuration of the router via Wi-Fi connection, note that immediately after changing the wireless default settings you will need to reconfigure the wireless connection using the newly specified settings.

Saving Settings to Non-volatile Memory

In order to avoid losing the new settings upon hardware reboot (accidental or intentional power-off of the device), it is recommended to save the settings to the non-volatile memory of the router.

Click the **Save&Reboot** line in the top-page menu displayed when the mouse pointer is over the **System** caption.



Wait until the router is rebooted. Now you can use it to access the Internet or access the web-based interface of the router to configure additional parameters. For detailed description of every page of the web-based interface, see the “*User Manual*” document (<ftp://dlink.ru/pub/VDSL2/DSL-6740U/Description/>).

TECHNICAL SUPPORT

You can find software updates and user documentation on our website.

D-Link provides its customers with free support within the product's warranty period.

Customers can contact the technical support group by phone or by e-mail/Internet.

FOR TELEPHONE NUMBERS AND ADDRESSES OF D-LINK OFFICES WORLDWIDE VISIT

<http://www.dlink.com/corporate/worldwideoffices/>