



DHN-120
10Mb Home Phoneline
USB Adapter
User's Guide

Copyright © 1999 D-Link, all rights reserved. D-Link, DHN-920 and DHN-120 are registered trademarks of D-Link. Microsoft Windows 95, Windows 98, and Windows 2000 are trademarks of the Microsoft Corporation. All other trademarks are registered trademarks or trademarks of their respective holders. All specifications are subject to change without notice.

FCC Certifications

This equipment has been tested and found to comply with the limits for a Class B digital device, pursuant to Part 15 of the FCC Rules. These limits are designed to provide reasonable protection against harmful interference in a residential installation. This equipment generates, uses and can radiate radio frequency energy and, if not installed and used in accordance with the instructions, may cause harmful interference to radio communications.

However, there is no guarantee that interference will not occur in a particular installation. If this equipment does cause harmful interference to radio or television reception, which can be determined by turning the equipment off and on, the user is encouraged to try to correct the interference by one or more of the following measures:

- Reorient or relocate the receiving antenna.
- Increase the separation between the equipment and receiver.
- Connect the equipment into an outlet on a circuit different from that to which the receiver is connected.
- Consult the dealer or an experienced radio/TV technician for help.

Shielded interface cables must be used in order to comply with emission limits.

You are cautioned that changes or modifications not expressly approved by the party responsible for compliance could void your authority to operate the equipment.

This device complies with Part 15 of the FCC rules. Operation is subject to the following two conditions: (1) This device may not cause harmful interference, and (2) This device must accept any interference received, including interference that may cause undesired operation.

CE Mark Warning

This is a Class B product. In a domestic environment, this product may cause radio interference, in which case the user may be required to take adequate measures.

VCCI Warning

注意
この装置は、情報処理装置等電波障害自主規制協議会 (VCCI) の基準に基づく第一種情報技術装置です。この装置を家庭環境で使用すると電波妨害を引き起こすことがあります。この場合には使用者が適切な対策を講ずるよう要求されることがあります。

LIMITED WARRANTY

D-Link Systems, Inc. (“D-Link”) provides this limited warranty for its product only to the person or entity who originally purchased the product from D-Link or its authorized reseller or distributor.

Limited Hardware Warranty: D-Link warrants that the hardware portion of the D-Link products described below (“Hardware”) will be free from material defects in workmanship and materials from the date of original retail purchase of the Hardware, for the period set forth below applicable to the product type (“Warranty Period”) if the Hardware is used and serviced in accordance with applicable documentation; provided that a completed Registration Card is returned to an Authorized D-Link Service Office within ninety (90) days after the date of original retail purchase of the Hardware. If a completed Registration Card is not received by an authorized D-Link Service Office within such ninety (90) period, then the Warranty Period shall be ninety (90) days from the date of purchase.

<i>Product Type</i>	<i>Warranty Period</i>
Product (excluding power supplies and fans), if purchased and delivered in the fifty (50) United States, or the District of Columbia (“USA”)	As long as the original purchaser still owns the product
Product purchased or delivered outside the USA	One (1) Year
Power Supplies and Fans	One (1) Year
Spare parts and spare kits	Ninety (90) days

D-Link’s sole obligation shall be to repair or replace the defective Hardware at no charge to the original owner. Such repair or replacement will be rendered by D-Link at an Authorized D-Link Service Office. The replacement

Hardware need not be new or of an identical make, model or part; D-Link may in its discretion may replace the defective Hardware (or any part thereof) with any reconditioned product that D-Link reasonably determines is substantially equivalent (or superior) in all material respects to the defective Hardware. The Warranty Period shall extend for an additional ninety (90) days after any repaired or replaced Hardware is delivered. If a material defect is incapable of correction, or if D-Link determines in its sole discretion that it is not practical to repair or replace the defective Hardware, the price paid by the original purchaser for the defective Hardware will be refunded by D-Link upon return to D-Link of the defective Hardware. All Hardware (or part thereof) that is replaced by D-Link, or for which the purchase price is refunded, shall become the property of D-Link upon replacement or refund.

Limited Software Warranty: D-Link warrants that the software portion of the product (“Software”) will substantially conform to D-Link’s then current functional specifications for the Software, as set forth in the applicable documentation, from the date of original delivery of the Software for a period of ninety (90) days (“Warranty Period”), if the Software is properly installed on approved hardware and operated as contemplated in its documentation. D-Link further warrants that, during the Warranty Period, the magnetic media on which D-Link delivers the Software will be free of physical defects. D-Link’s sole obligation shall be to replace the non-conforming Software (or defective media) with software that substantially conforms to D-Link’s functional specifications for the Software. Except as otherwise agreed by D-Link in writing, the replacement Software is provided only to the original licensee, and is subject to the terms and conditions of the license granted by D-Link for the Software. The Warranty Period shall extend for an additional ninety (90) days after any replacement Software is delivered. If a material non-conformance is incapable of correction, or if D-Link determines in its sole discretion that it is not practical to replace the non-conforming Software, the price paid by the original licensee for the non-conforming Software will be refunded by D-Link; provided that the non-conforming Software (and all copies thereof) is first returned to D-Link. The license granted respecting any Software for which a refund is given automatically terminates.

What You Must Do For Warranty Service:

Registration Card. The Registration Card provided at the back of this manual must be completed and returned to an Authorized D-Link Service Office for each D-Link product within ninety (90) days after the product is purchased and/or licensed. The addresses/telephone/fax list of the nearest Authorized D-Link Service Office is provided in the back of this manual. **FAILURE TO PROPERLY COMPLETE AND TIMELY RETURN THE REGISTRATION CARD MAY AFFECT THE WARRANTY FOR THIS PRODUCT.**

Submitting A Claim. Any claim under this limited warranty must be submitted in writing before the end of the Warranty Period to an Authorized D-Link Service Office. The claim must include a written description of the Hardware defect or Software nonconformance in sufficient detail to allow D-Link to confirm the same. The original product owner must obtain a Return Material Authorization (RMA) number from the Authorized D-Link Service Office and, if requested, provide written proof of purchase of the product (such as a copy of the dated purchase invoice for the product) before the warranty service is provided. After an RMA number is issued, the defective product must be packaged securely in the original or other suitable shipping package to ensure that it will not be damaged in transit, and the RMA number must be prominently marked on the outside of the package. The packaged product shall be insured and shipped to D-Link, 53 Discovery Drive, Irvine CA 92618, with all shipping costs prepaid. D-Link may reject or return any product that is not packaged and shipped in strict compliance with the foregoing requirements, or for which an RMA number is not visible from the outside of the package. The product owner agrees to pay D-Link’s reasonable handling and return shipping charges for any product that is not packaged and shipped in accordance with the foregoing requirements, or that is determined by D-Link not to be defective or non-conforming.

What Is Not Covered:

This limited warranty provided by D-Link does not cover:

Products that have been subjected to abuse, accident, alteration, modification, tampering, negligence, misuse, faulty installation, lack of reasonable care, repair or service in any way that is not contemplated in the documentation for the product, or if the model or serial number has been altered, tampered with, defaced or removed;

Initial installation, installation and removal of the product for repair, and shipping costs;

Operational adjustments covered in the operating manual for the product, and normal maintenance;

Damage that occurs in shipment, due to act of God, failures due to power surge, and cosmetic damage; and

Any hardware, software, firmware or other products or services provided by anyone other than D-Link.

Disclaimer of Other Warranties: EXCEPT FOR THE LIMITED WARRANTY SPECIFIED HEREIN, THE PRODUCT IS PROVIDED “AS-IS” WITHOUT ANY WARRANTY OF ANY KIND INCLUDING, WITHOUT LIMITATION, ANY WARRANTY OF MERCHANTABILITY, FITNESS FOR A PARTICULAR PURPOSE AND NON-INFRINGEMENT. IF ANY IMPLIED WARRANTY CANNOT BE DISCLAIMED IN ANY TERRITORY WHERE A PRODUCT IS SOLD, THE DURATION OF SUCH IMPLIED WARRANTY SHALL BE LIMITED TO NINETY (90) DAYS. EXCEPT AS EXPRESSLY COVERED UNDER THE LIMITED WARRANTY PROVIDED HEREIN, THE ENTIRE RISK AS TO THE QUALITY, SELECTION AND PERFORMANCE OF THE PRODUCT IS WITH THE PURCHASER OF THE PRODUCT.

Limitation of Liability: TO THE MAXIMUM EXTENT PERMITTED BY LAW, D-LINK IS NOT LIABLE UNDER ANY CONTRACT, NEGLIGENCE, STRICT LIABILITY OR OTHER LEGAL OR EQUITABLE THEORY FOR ANY LOSS OF USE OF THE PRODUCT, INCONVENIENCE OR DAMAGES OF ANY CHARACTER, WHETHER DIRECT, SPECIAL, INCIDENTAL OR CONSEQUENTIAL (INCLUDING, BUT NOT LIMITED TO, DAMAGES FOR LOSS OF GOODWILL, WORK STOPPAGE, COMPUTER FAILURE OR MALFUNCTION, LOSS OF INFORMATION OR DATA CONTAINED IN, STORED ON, OR INTEGRATED WITH ANY PRODUCT RETURNED TO D-LINK FOR WARRANTY SERVICE) RESULTING FROM THE USE OF THE PRODUCT, RELATING TO WARRANTY SERVICE, OR ARISING OUT OF ANY BREACH OF THIS LIMITED WARRANTY, EVEN IF D-LINK HAS BEEN ADVISED OF THE POSSIBILITY OF SUCH DAMAGES. THE SOLE REMEDY FOR A BREACH OF THE FOREGOING LIMITED WARRANTY IS REPAIR, REPLACEMENT OR REFUND OF THE DEFECTIVE OR NON-CONFORMING PRODUCT.

GOVERNING LAW: This Limited Warranty shall be governed by the laws of the state of California.

Some states do not allow exclusion or limitation of incidental or consequential damages, or limitations on how long an implied warranty lasts, so the foregoing limitations and exclusions may not apply. This limited warranty provides specific legal rights and the product owner may also have other rights which vary from state to state.

Contents

- Chapter 1 Introduction..... 1
 - DHN-120 Installation Guide and Networking Basics 1
 - Box Contents 2
- Chapter 2 Installing Adapters and Cables 3
 - Installing USB Adapters 3
 - Installing Cables 3
- Chapter 3 Installing Software..... 5
 - Installing Software under Windows 98 5
 - Installing Software in Windows 2000 9
- Chapter 4 Networking Basics..... 13
 - TCP/IP Protocol..... 13
 - Computer Identification..... 17
 - Sharing Files 19
 - Sharing Printers 26
 - Playing Network Games 31
- Chapter 5 Troubleshooting..... 36
 - Verify Each Computer’s Identification 36
 - Verify Network Adapter Installation 36
 - Verify Cable Connections..... 37
 - Understanding Indicators..... 38
 - Getting Technical Support..... 38
 - Technical Specifications..... 39

Chapter 1 Introduction

DHN-120 Installation Guide and Networking Basics

The D-Link DHN-120 is ideal for the small office or home office environment. The DHN-120 enables you to add your computer to a network. After completing the steps in this manual, you will have the ability to share information and resources - such as files and printers - and take full advantage of a "connected" environment for work and play!

The DHN-120 comes with drivers for the most popular operating systems and can be integrated into a larger network. This Quick Starter Guide is designed to help you install the DHN-120 and connect the computer to a network running Windows 98 or Windows 2000.

The HomePNA standard allows you to connect computers and devices at speeds up to 10 Mbps. The DHN-120 is based on the newest HomePNA 2.0 standard. Older Network Cards, based on HomePNA 1.0, support speeds up to 1 Mbps. The DHN-120 is backwards compatible with HomePNA 1.0 products as well.

This Quick Starter Guide will take you through the steps of planning your network, installing the network hardware and software, and setting up Windows properly to use basic networking functions like printer and file sharing and playing network games. Take a moment to read through this manual and familiarize yourself with the steps necessary to complete the installation process. The entire process should take from one to two hours of your time. But, you should also give yourself some time to play with your new network!

Box Contents

You should have the following items:

- 1 DHN-120 10 Mbps HomePNA 2.0 Network Adapter
- 1 Phoneline Cable
- 1 USB Cable
- DHN-120 Quick Starter Guide (This Manual)
- DHN-120 Driver CD

Chapter 2 Installing Adapters and Cables

If you plan to set up two computers in the same room, you can use a single phone jack. Keep in mind that at all times at least one of the cards on your phonline network must be plugged into a phone jack. Also keep in mind that the phone jack must be for an active phone line. The phonline network cards depend on the small voltage that it is on your phone lines to function properly.

Installing USB Adapters

USB is the simplest way to install a network adapter. It is a simple matter of using the included USB cable to connect the DHN-120 to an open USB port on any PC or laptop you wish to connect. Please make sure that each computer is off before plugging the unit in. Once you have created your network, you will be able to hot-plug the DHN-120 at will, but for the purposes of this manual it is best if you initially install the adapters with your computers powered off.

Installing Cables

The cable included in the box is 15 feet in length. If you need a longer cable, they are sold at most electronics stores. If you want to use a phone on the same phone jack, we recommend that you purchase a splitter for the jack.

If you plan to use 2 or more phone jacks, make sure that they are (1) active and (2) on the same line (the same phone number). The Home Phonline adapters will NOT interfere with your normal phone, analog modem, or DSL modem but they do require an active phone line to work.

With the power off on your computers, run the first cable from your DHN-120 USB HPNA 2.0 Network Adapter directly to the phone jack. If you have two available phone jacks on the same line (telephone number) then simply repeat this step for any other machines you would like to add to your home phonline network like the picture below, Figure 1:



Figure 1: Connecting Cables

If you plan to have two computers in the same room and only have one phone jack, you can "daisy chain" the computers together. Simply run your first phoneline cable from one of ports on the first DHN-120 to an available, active phone line. Then run the second cable from the second port of the first DHN-120 to one of the ports on the second DHN-120.

If you have a free port available on the DHN-120, it can be used to plug in a phone or modem. The DHN-120 won't interfere with your phone, DSL, or modem signal.

Congratulations: The hardware is ready to be configured into a network.

Chapter 3 Installing Software

You have completed the hardware installation necessary to start operating your network. But, before you start sending those print jobs to the printer in the other room or start playing fast paced network games with your family, you need to tell your computers that they are connected to a network – that is, you need to install the Networking System Software. This will consist primarily of installing device drivers for your Network Adapters. Device drivers help the operating system on your computer to identify and operate devices such as printers and Network Adapters.

Installing Software under Windows 98

Since the DHN-120 is Plug-and-Play, Windows 98 recognizes that you have added a Network Adapter and requests that you provide the necessary device driver. The Windows 98 installation CD will be needed to complete this installation.

- A. Power ON your computer.

- B. Windows 98 will detect the new hardware, and will launch the Add New Hardware Wizard. The wizard will find your new "D-Link DHN-120", as shown in Figure 2.



Figure 2: Add New Hardware Wizard

- C. Insert the DHN-120 Drivers CD provided with your kit into your CD-ROM drive and click "Next >" to continue.

- D. In Windows 98, the wizard will ask you, "What do you want Windows to do?" Select "Search for the best driver for your device (Recommended)" and click "Next >" to continue, as shown in Figure 3.



Figure 3: Search for Driver

- E. The wizard will now ask you to identify the location to search. Ensure that "CD-ROM Drive" has a check in Windows 98 and click "Next >" to continue, as shown in Figure 4.



Figure 4: Specify Driver Location

- F. The wizard will find the driver on the CD and state its readiness to install the driver for the "D-Link DHN-120 10Mb Home Phoneline USB Adapter" Click "Next >" to continue, as shown in Figure 5.
- G. The wizard will install the driver and additional networking software from the Windows 98 CD-ROM. If requested, please provide the Windows 98 CD-ROM.



Figure 5: Driver Installation

- H. For Windows 98, the wizard will display that it has finished installing the driver. Remove the driver CD from the CD-ROM drive and click "Finish." Windows will ask to reboot click "Yes" and let your computer reboot, as shown in Figure 6.



Figure 6: Click Finish to complete the installation

Installing Software in Windows 2000

Since the DHN-120 is Plug-and-Play, Windows 2000 will recognize that you have added a Network Adapter and request that you provide the necessary device driver. The Windows 2000 installation disks or CD will be needed to complete this installation.

- I. Power ON your computer.

- J. Windows 2000 will detect the new hardware, and will launch the Add New Hardware Wizard. The wizard will find your new "D-Link DHN-120", see Figure 7.



Figure 7: Found New Hardware Wizard

- K. Select "Search for a suitable driver for my device (recommended)" then click "Next>", see Figure 8.

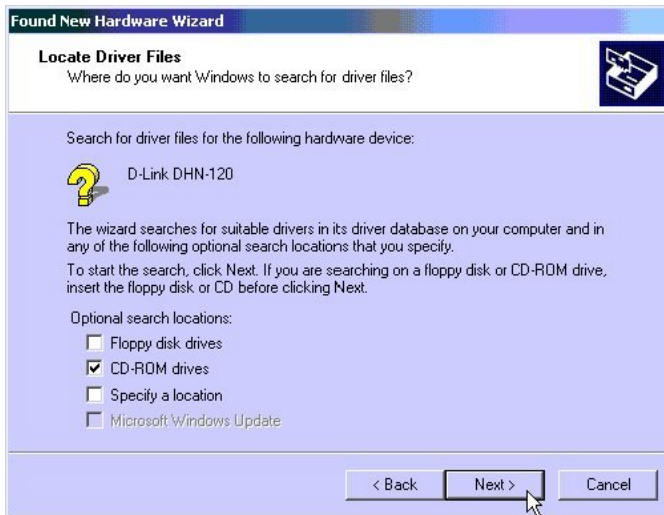


Figure 8: Locate Driver Files

- L. Make sure your DHN-120 installation CD is in your CD-ROM drive and the box next to "CD-ROM drives" is checked. Press "Next>", see Figure 9.

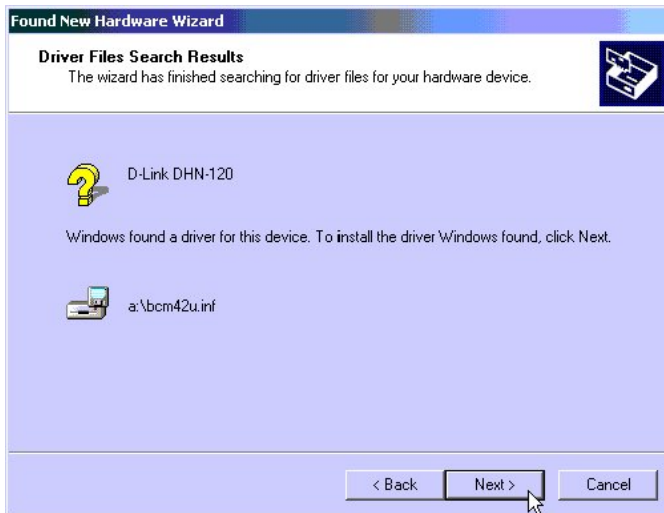


Figure 9: Driver Files Search Results

M. Windows will find the appropriate driver. Press "Next>"



Figure 10: Digital Signature Not Found

A. Press "Yes", see Figure 10.



Figure 11: Completing the Found New Hardware Wizard

N. To complete the installation, press "Finish", see Figure 11.

Chapter 4 Networking Basics

You may have had some ideas about how to use your new network prior to installing the DHN-120 – sharing files, printing from any computer on the network, or accessing the Internet on multiple computers with one connection. This section will help you get started on those ideas or even give you some new ones. However, this section is not intended to be a comprehensive guide to networking, it is just an outline of a few networking basics.

If you are interested in learning more about networking, we have identified some Internet resources that may be of interest:

D-Link Systems, Inc.

www.dlink.com

D-Link is one of the largest manufacturers of Ethernet products in the world. D-Link's technological expertise and dedication to providing quality products at a low price makes D-Link a good place to watch for the newest in networking innovations. Or, you may want to get the newest drivers available for your Network Adapters.

TCP/IP Protocol

Before you start sharing files and printers, you need to set the IP address for each of your computers. An IP address is just that, an address. It tells other computers on the network where your computer is so that they can communicate. For your first computer you will add a fixed IP address. For each computer you add to the network, you will need to follow these same steps, but add a different address.

- O. From the Start menu, go to Settings-Control Panel, as shown in Figure 12.

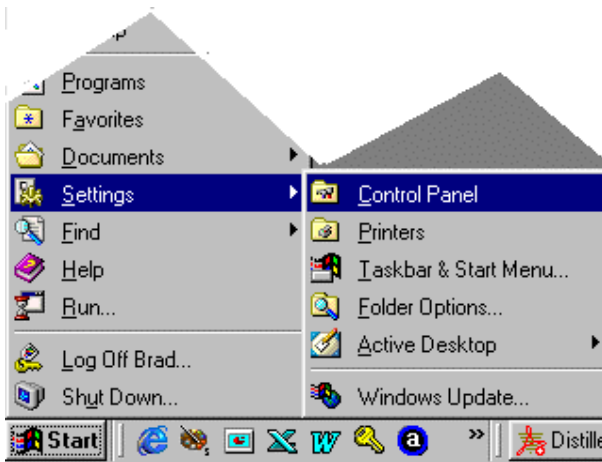


Figure 12: Start > Settings > Control Panel

- P. Double Click the Network icon in the Control Panel, as shown in Figure 13.

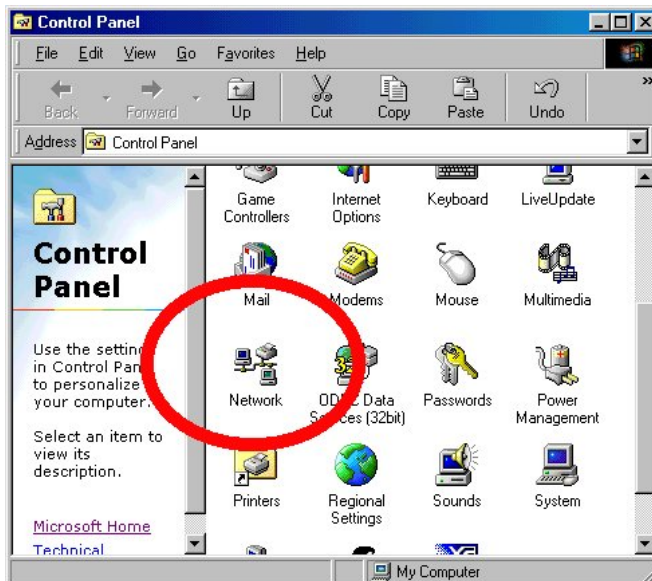


Figure 13: Control Panel

This Window will appear, as shown in Figure 14.

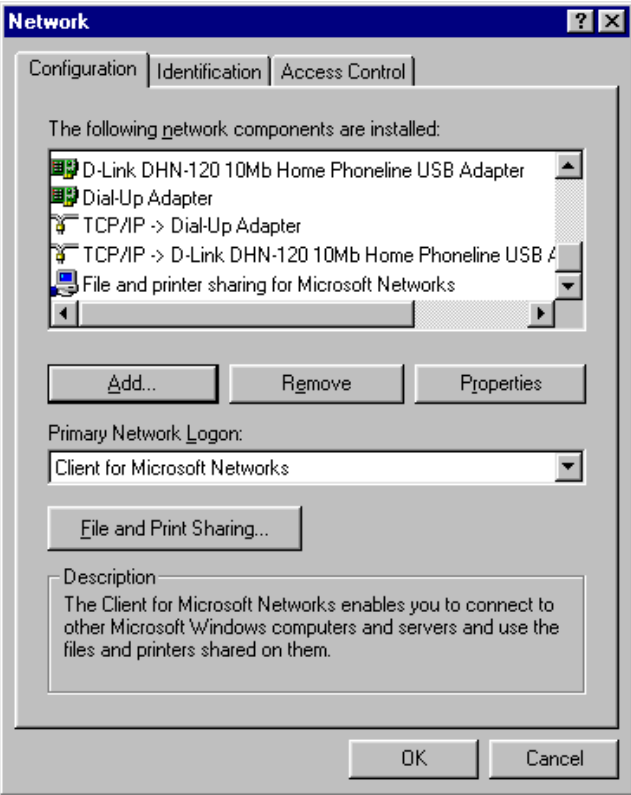


Figure 14: Network

- Q. Highlight the line that says "TCP/IP >D-Link DHN-120 10Mb Home Phoneline USB Adapter" and press the "Properties" button.

- R. This will open the TCP/IP properties window. Make sure the "IP Address" tab is selected and then press the circle next to "Specify an IP Address". Enter 192.168.0.1 for the IP address, and 255.255.255.0 for the Subnet Mask. After you have done this your screen should look like this, as shown in Figure 15:

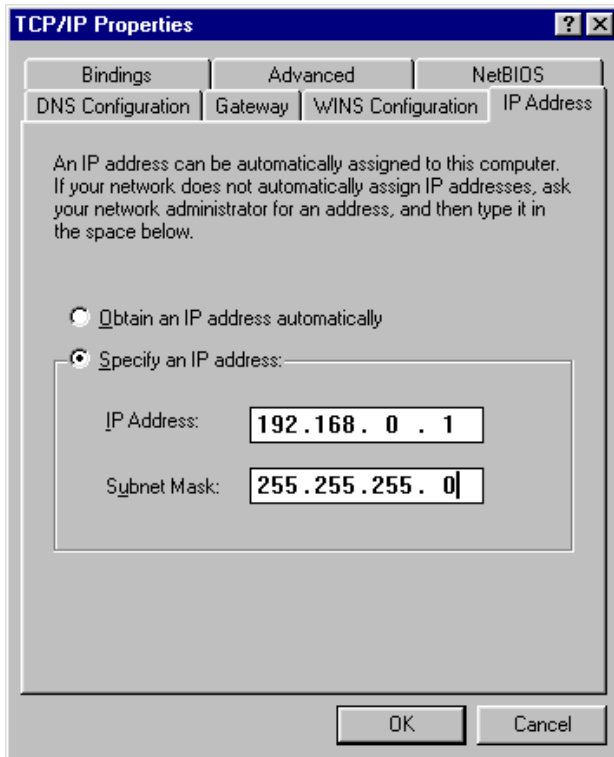


Figure 15: TCP/IP Properties

- S. Now press OK, and press OK again. Your system will probably prompt you to reboot at this point, just answer "Yes". That's it!

For each computer on your network you will need to follow these same steps, with the exception that you will give each computer its own unique IP address. So for your second computer enter 192.168.0.2 for the IP address and 255.255.255.0 for the Subnet Mask. For your third computer set the address as 192.168.0.3 and so on (192.168.0.4 for the 4th, 192.168.0.5, for the 5th....etc.). It does not matter which computer is which number, just that each computer has its own unique number starting with 192.168.0.??? and the same subnet mask of 255.255.255.0, as shown in Figure 16.

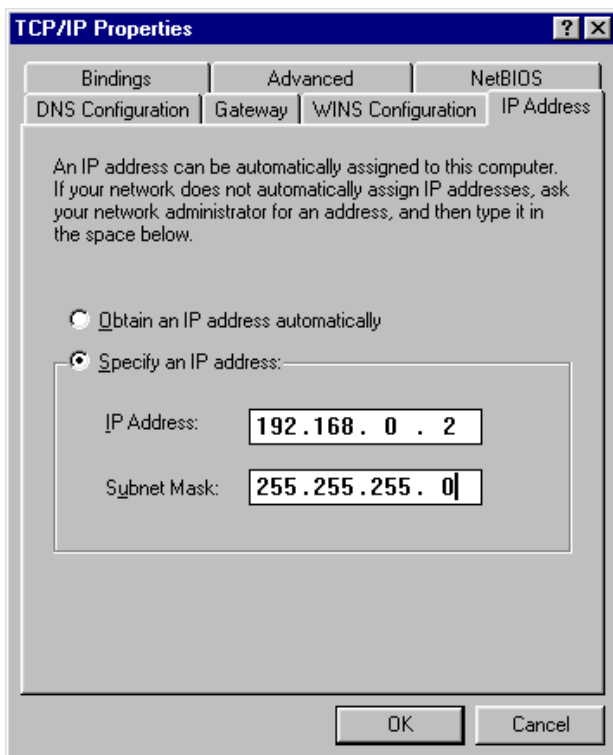


Figure 16: Specify an IP Address

Computer Identification

You may need to verify that each computer has a unique name and common workgroup name.

- T. On your Desktop, right-click the icon "Network Neighborhood" and select "Properties" from the context menu, as shown in Figure 17.

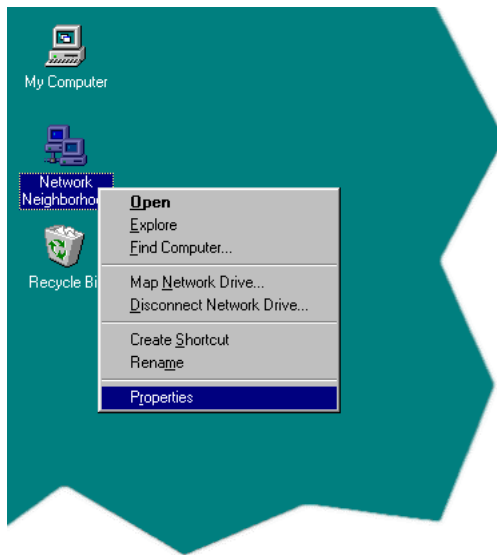


Figure 17: Network Neighborhood

- U. Click the "Identification" tab on the top of the dialog box.
- V. Type a unique, identifying name for this particular computer in the "Computer name:" box. This will be the name that other computers on your network will use to communicate with this computer. Each computer's name must be unique on a particular network or confusion will result. (The computer's name should be 15 or fewer characters with no spaces.)
- W. Type the workgroup name this computer will be a part of in the "Workgroup:" box. All of the computers on your network should have an identical Workgroup name.
- X. The "Computer Description:" box is optional. You may enter a description that will help you identify this computer on your network. Then click "OK".

- Y. Repeat this process for each computer on your network to ensure that they all have a unique "Computer Name" and identical "Workgroup", as shown in Figure 18.

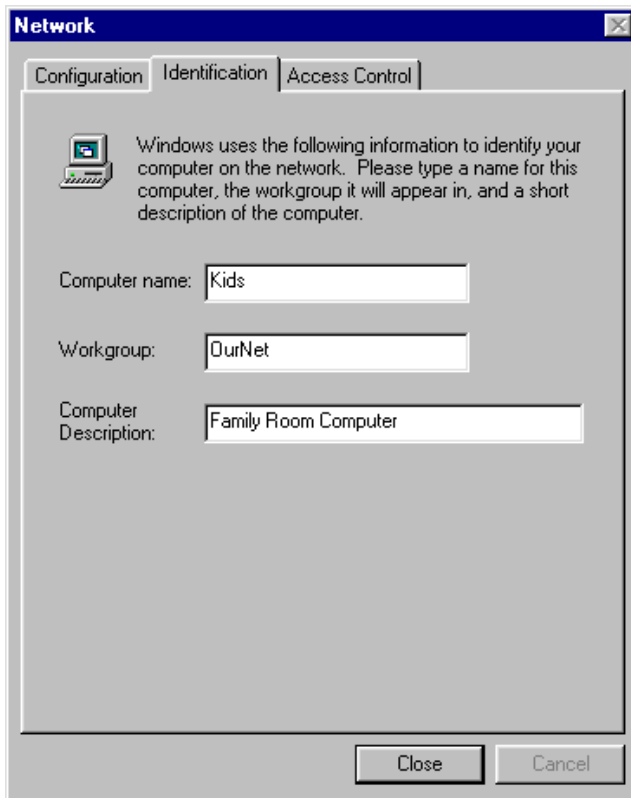


Figure 18: Network

Sharing Files

With your computers connected together on a network, you may now open and save files on another computer. You will be able to specify particular folders or disk drives to "share" and even password protect them. The steps below will enable you to share specific files and folders with other computers on your network.

- Z. On your Desktop, right-click the icon "Network Neighborhood" and select "Properties" from the context menu, as shown in Figure 19.

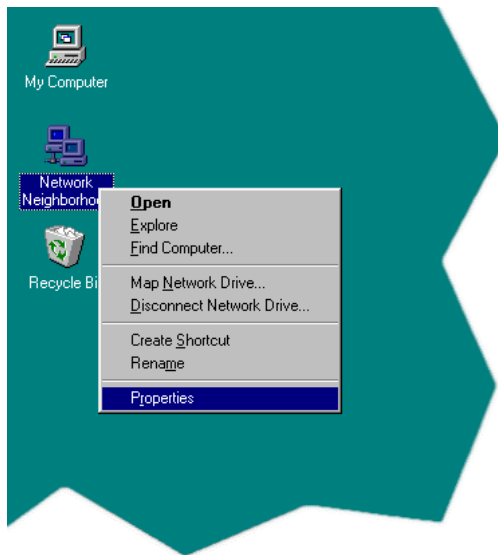


Figure 19: Network Neighborhood

- AA. This dialog box is where you will come to configure most of your computers network settings. It is also available through the "Network" icon in the Control Panel.

- BB. Click the "File and Print Sharing..." button, as shown in Figure 20.

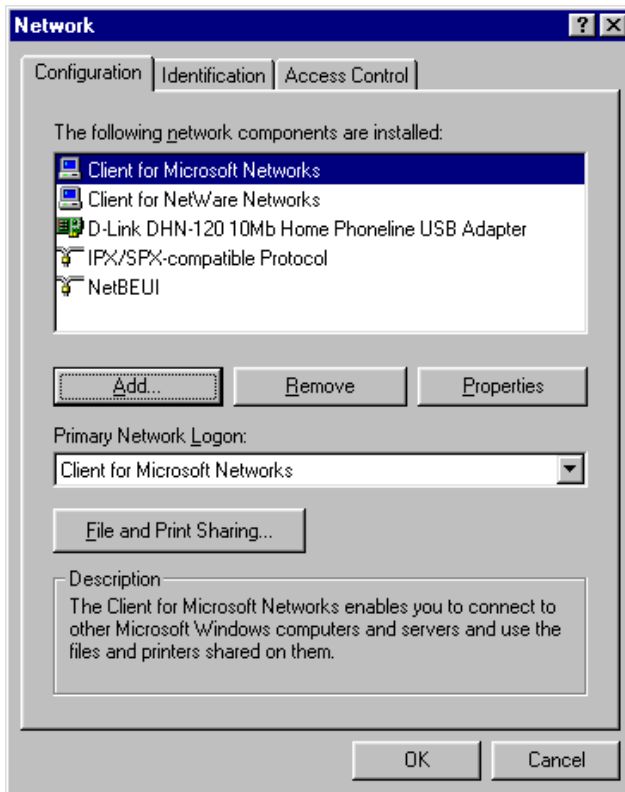


Figure 20: Network

- CC. Click to place a check mark next to "I want to be able to give others access to my files."
- DD. Click "OK" on the "File and Print Sharing" dialog box.
- EE. Click "OK" on the "Network" dialog box.

- FF. Provide the Windows 98 installation CD or diskette(s) if prompted or direct Windows to the proper location of the installation files. Reboot if prompted, as shown in Figure 21.

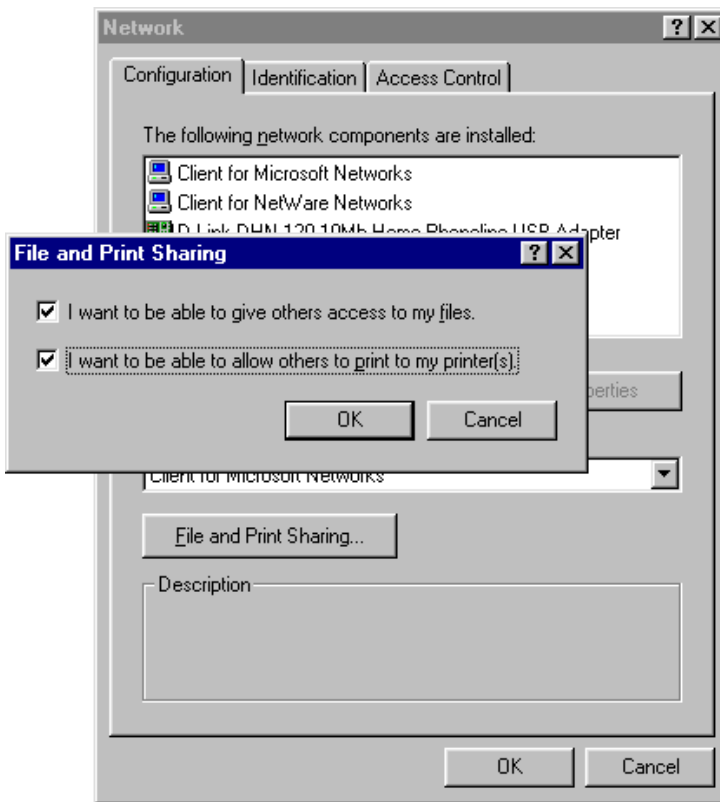


Figure 21: File and Print Sharing

- GG. You will now be able to identify a particular folder or disk drive to share. You may want to share a folder that both you and a colleague/family member needs to access occasionally. Or, maybe you want to share a CD-ROM drive so your other computer that does not have one can read CD's. Both of these processes are the same. Only the disk drives and folders that you specifically identify as shared will be accessible to other computers on your network.
- HH. Find the disk drive or folder you want to share with Windows Explorer or the "My Computer" icon on your desktop.

- II. Right-click on the disk drive or folder icon and select "Sharing...", as shown in Figure 22.

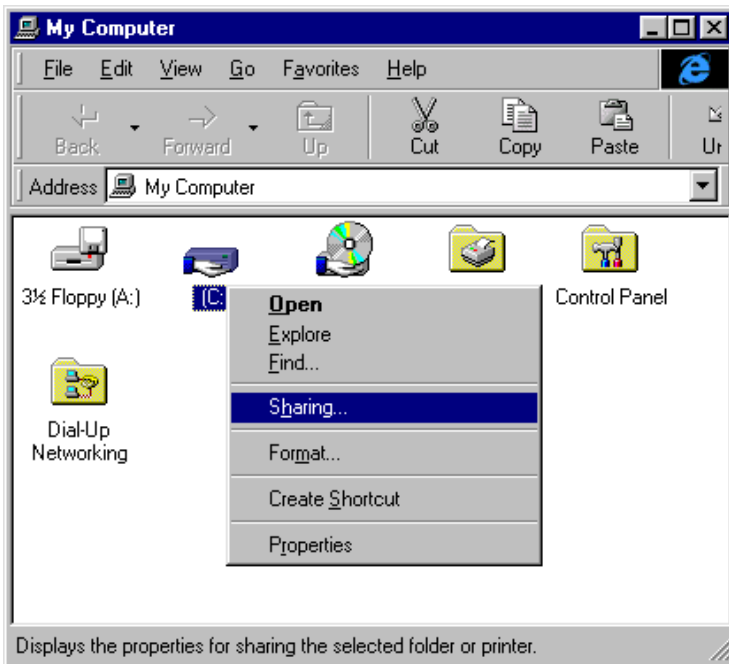


Figure 22: My Computer

- JJ. Select "Shared As:" to set the parameters for sharing this particular disk drive or folder.
- KK. The "Share Name:" box is used to identify the disk drive or folder you are sharing to other computers on the network. You can give it any name you wish. However, a specific identification may help as more resources on your network are shared.
- LL. The "Comment:" box is optional. You can use this box to further describe the disk drive or folder for others on the network.
- MM. "Access Type:" allows you to designate how much someone else on the network can do with this disk drive or folder. "Read-Only" allow others to only look at or open the files on the disk drive or in the folder. "Full" allows other to read, write, open, save, copy, move, and delete files on the disk or in the folder. "Depends on Password" gives other computers access conditional upon the password they provide.

- NN. "Passwords:" allow you to apply a level of security to your shared disk drives and folders. Another computer (user) will be required to enter the password you designate here before accessing the disk drive or folder. Two passwords are used to give two levels of security (or access) to others on the network using the "Depends on Password" setting. Leaving the "Password" boxes empty gives everyone on the network access to the disk drive or folder.
- OO. Click "OK" to continue. You will be prompted to enter the password(s) you provided for verification. Retype the password(s) just as you entered them the first time, Figure 23.

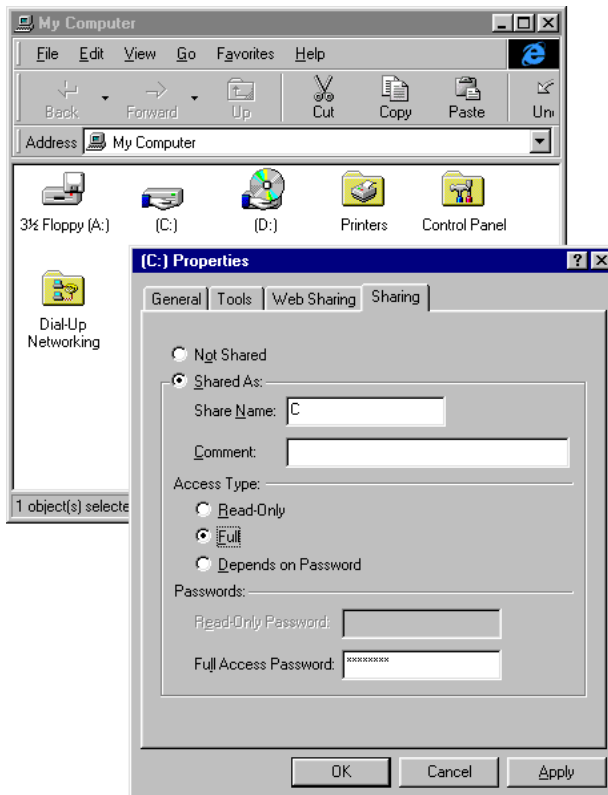


Figure 23: Properties

- PP. You may now access this disk drive or folder from another computer on your network. Do so by double-clicking the "Network Neighborhood" icon on your desktop or inside Windows Explorer.

- QQ. Navigate to the computer with the shared disk drive or folder (recognized by the "Computer Name" you provided) and double-click. You should now see the disk drive or folder, double-click. If you specified a password when sharing this disk drive or folder, you will be prompted for the password.
- RR. You can access a disk drive or folder shared over the network from most Windows 98 applications. To make this process easier, Windows allows you to map these disk drives and folders to a drive letter on another computer. For example, on a computer where you are accessing a shared folder from another computer, inside Windows Explorer right-click and select "Map Network Drive..." You will then be able to assign an available drive letter. Checking "Reconnect at logon" allows Windows to map this network drive each time you start your computer, as shown in Figure 24.

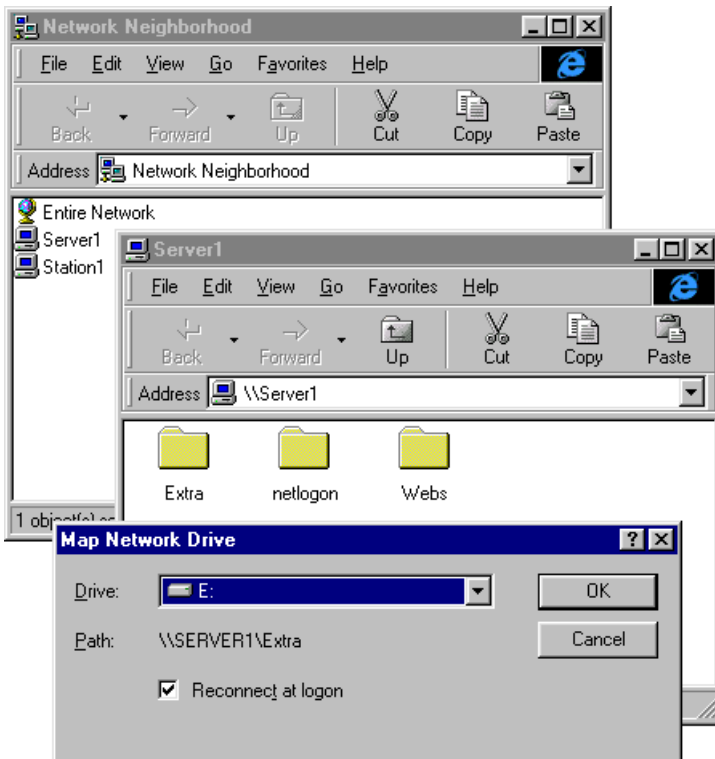


Figure 24: Map Network Drive

Sharing Printers

"Sharing" a printer connected to one computer with other computers on your network can be very convenient — allowing you to print from any computer on the network. The steps below will enable you to print with other computers on your network.

- SS. On your Desktop, right-click the icon "Network Neighborhood" and select "Properties" from the context menu, Figure 25.

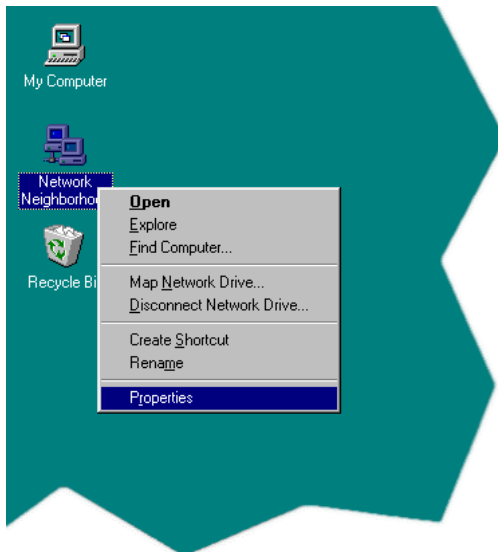


Figure 25: Network Neighborhood

- TT. Click the "File and Print Sharing..." button.
- UU. Click to place a check mark next to "I want to be able to allow others to print to my printer(s)."
- VV. Click "OK" on the "File and Print Sharing" dialog box.
- WW. Click "OK" on the "Network" dialog box.

- XX. Provide the Windows 98 installation CD or diskette(s) if prompted or direct Windows to the proper location of the installation files. Reboot if prompted, as shown in Figure 26.

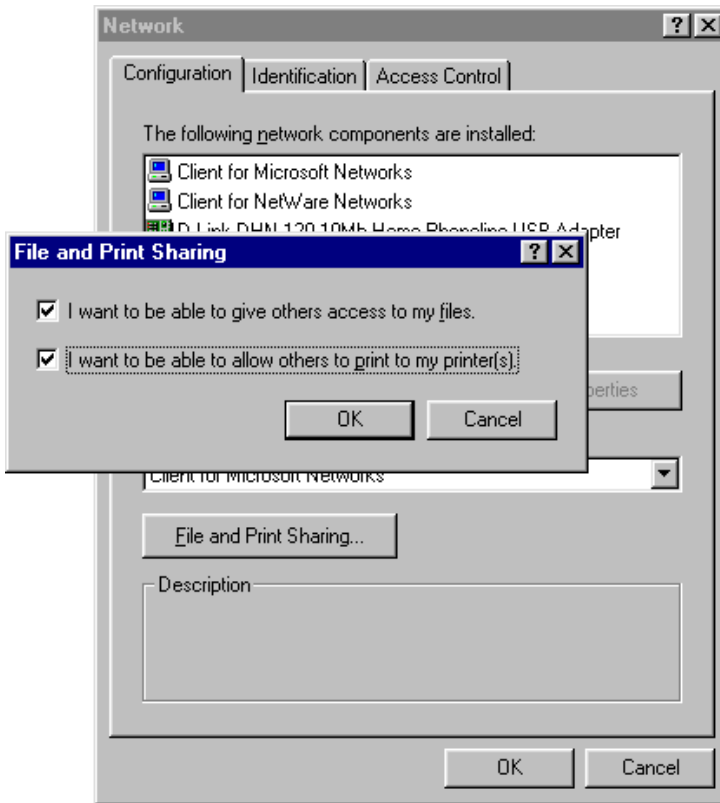


Figure 26: File and Print Sharing

YY. You may now share any installed printers connected to this computer with other computers on your network. From the "Start" button on the Task Bar select "Setting" and then "Printers", as shown in Figure 27.

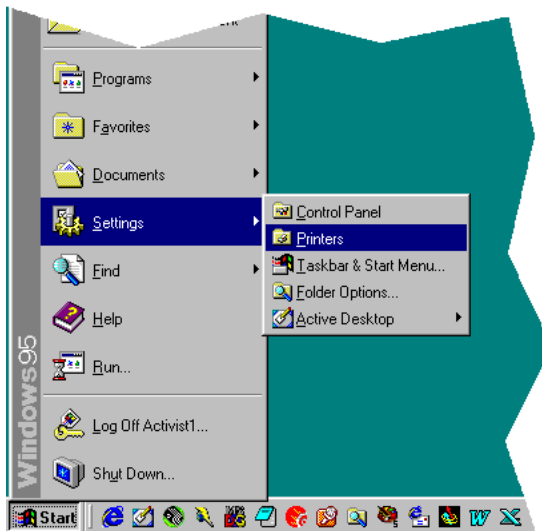


Figure 27: Printers

ZZ. Right-click on the printer you want to share with others on the network and select "Sharing..."

AAA. Click "Share As:" and provide a "Share Name:" to identify the printer to other computers on the network. "Comment:" and "Password:" are optional. Then click "OK", as shown in Figure 28.

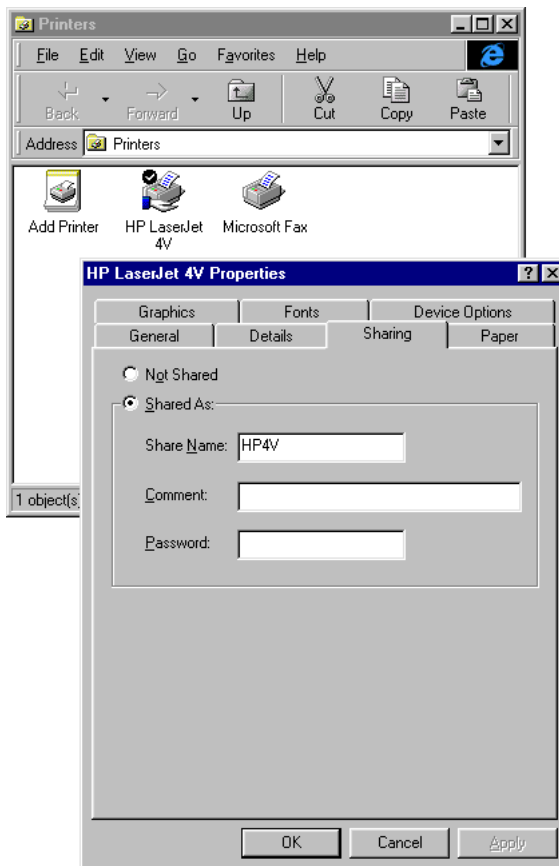


Figure 28: Printer Properties

BBB. Shared printers become Network Printers for other computers on the network. For a computer to access a Network Printer, the device driver or software for that printer must be installed and pointed to the proper location of the printer. This is done much the same way you installed the printer on the computer it is connected to.

- CCC. Go to the computer that you would like to be able to print from using the network. From the "Start" button on the Task Bar select "Settings" and then "Printers".
- DDD. Double click the "Add Printer" icon.
- EEE. The "Add Printer Wizard" will appear. Click "Next >".
- FFF. Choose "Network printer" and click "Next >", as shown in Figure 29.

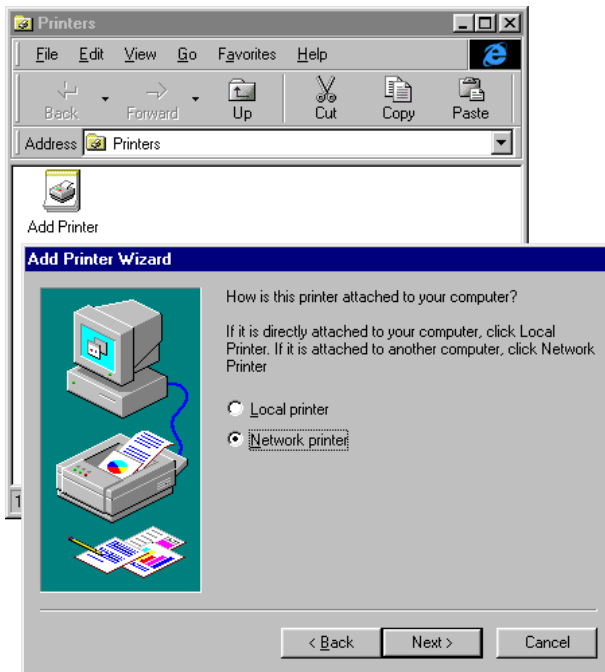


Figure 29: Add Printer Wizard

- GGG. Now you will identify the location of the Network Printer. If you know the name of the computer and the share name of the printer, you can type it into the "Network path or queue name:" box. However, it is easier to click the "Browse..." button and navigate to the location of the printer. Click "OK" when you have selected the desired printer. Finish the installation by continuing the "Add Printer Wizard" normally.
- HHH. You may now use the Network Printer as if it was connected directly. Note: the computer that the printer is connected to must

be on to use the printer. If you find this inconvenient, devices known as Network Print Servers are available from D-Link. The DP-101 and DP-301 can each support a single printer. The DP-300 and DP-100 will support up to three. A Network Print Server would allow you to directly connect your printer to your network, so you wouldn't have to worry which computer is turned on, as shown in Figure 30.

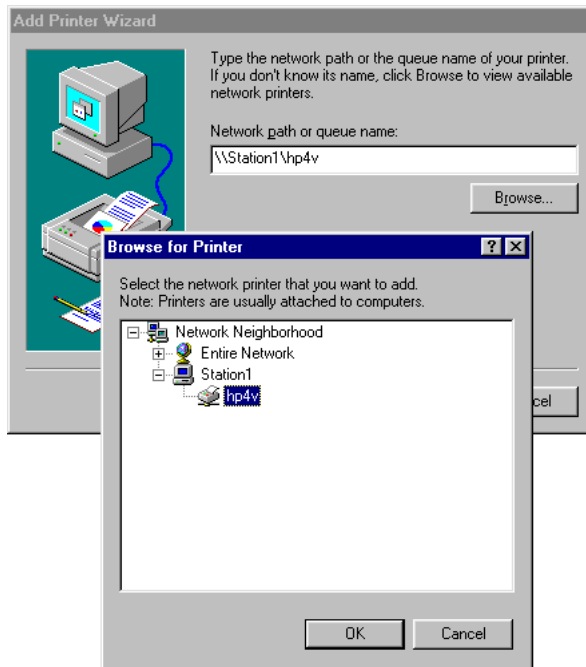


Figure 30: Browse for Printer

Playing Network Games

Part of the fun of having a network, is being able to play some of today's hottest games against friends and family. While a game may be fun when played in single player mode, or even against competitors across the Internet, playing someone in the same room across a network rocks!

If you followed the directions in this guide, you should have TCP/IP installed already. If you don't or are not sure, jump back to the beginning of the

Networking Basics section for a walk through. Some games may require IPX protocol support as well. To add IPX to each computer follow these steps:

- III. From the Start menu, go to Settings-Control Panel, as shown in Figure 31.

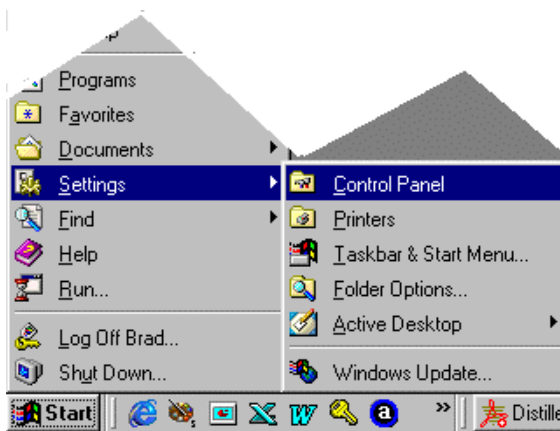


Figure 31: Control Panel

Double Click the Network icon in the Control Panel.

This window will appear, as shown in Figure 32:

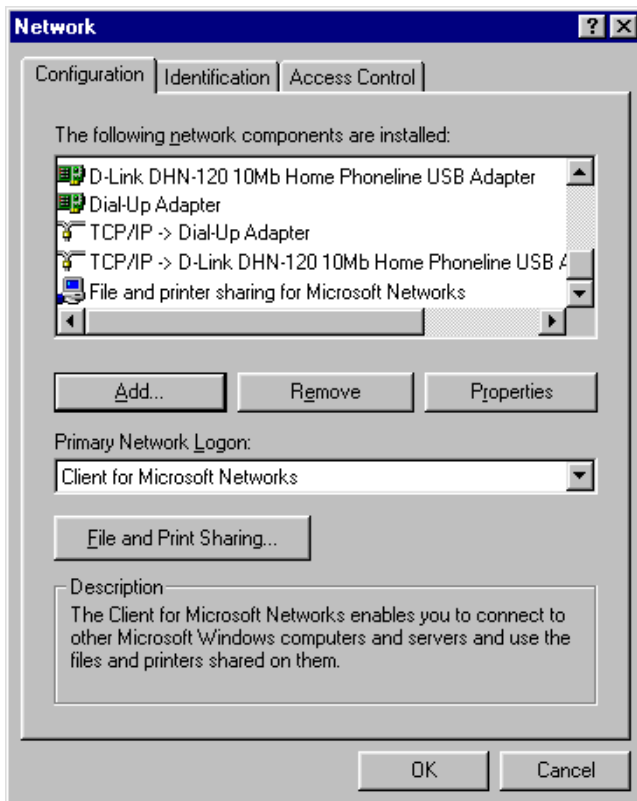


Figure 32: Network

Next press the “Add” button.

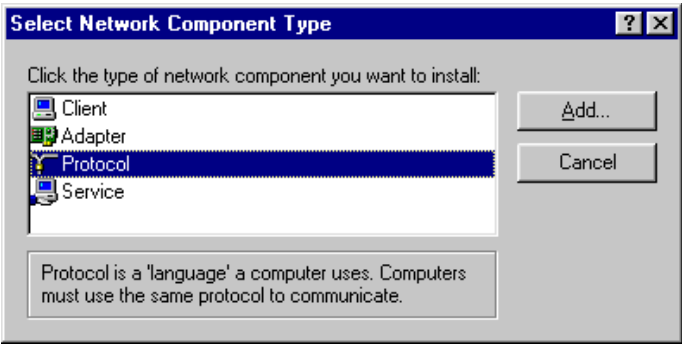


Figure 33: Select Network Component Type

Choose “Protocol” and press “Add”, as shown in Figure 33

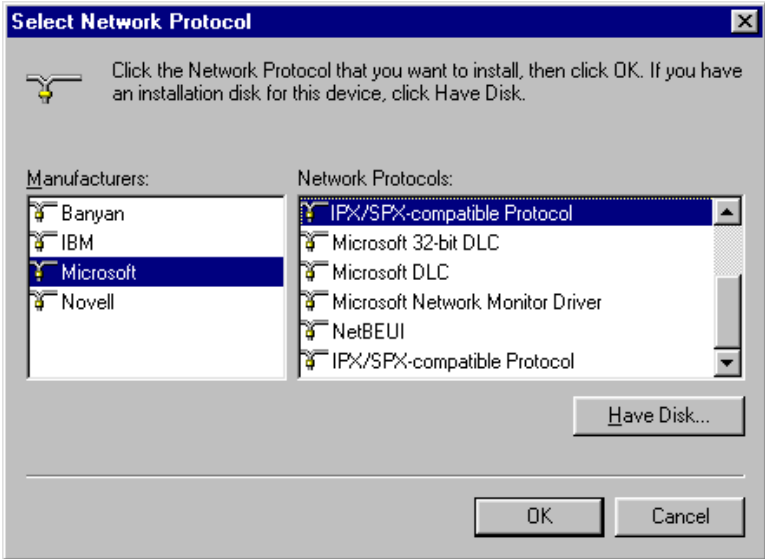


Figure 34: Select Network Protocol

Press “OK”, see Figure 34.

Windows may ask you for your original Windows installation CD and then to reboot. Once completed, the protocol will be available to your network adapter. Follow these steps for each computer on your network.

D-Link has included Shareware versions of two very popular network playable games from Blizzard, Diablo and WarCraft II. To install these games, place the accompanying D-Link CD into your CD-ROM drive. Allow the CD to autostart and you will see a window with links for installing these games and other software included on the CD. You may also browse the CD using Windows Explorer.

Before installing Diablo or WarCraft II, please select the installation for Microsoft DirectX 6.0 if it is not already available on your computer. DirectX is a multimedia enhancement for Windows 95/98.

To play Diablo or WarCraft II with another computer on the network, you must install the games on both computers. Each user must select "Multi Player" and then "Local Area Network (IPX)". Follow the instructions above to make sure that IPX is installed on each computer..

Have fun!

This CD includes Microsoft DirectX 6.0, Diablo and WarCraft II: Tides of Darkness. Insert the CD in your CD ROM drive, click on Networking Basics and then click on Playing Network Games. Click on the links and follow the instructions to install the game of your choice and Microsoft DirectX. 6.0.

Chapter 5 Troubleshooting

A network can be simple to install and maintain. However, occasionally something might go wrong. The best approach to troubleshooting network problems is to start at the very simplest level and work your way up.

Verify Each Computer's Identification

If more than one computer on your network has the same "Computer Name", communications may be negatively affected. Also, each computer must have the same "Workgroup" name to communicate properly. Use the steps in Networking Basics to ensure that each computer on your network has a unique "Computer Name" and an identical "Workgroup".

Verify Network Adapter Installation

If your Network Adapters were not properly installed, including the Network System Software or device drivers, your network will not function properly. Use these steps to verify that your Network Adapters are properly installed, see Figure 35:

- JJJ. Double-click the "System" icon in the Control Panel.
- KKK. Click the "Device manager" tab on top of the "System Properties" dialog box.
- LLL. Double-click "Network adapters" if you do not see any items branching out. You should see "D-Link DHN-120 10Mb Home Phoneline USB Adapter" branching out after double-clicking "Network adapters."
- MMM. If you do not see any items branching out after double-clicking "Network adapters," your Network Adapter has not been properly installed. Start at the beginning of the guide and follow all the steps for this computer.
- NNN. If you see any kind of symbol such as a yellow exclamation point or red "X" over the icon adjacent to "D-Link DHN-120 10Mb Home Phoneline USB Adapter", your adapter is not installed properly or may have a problem. Double-click "D-Link DHN-120

10Mb Home Phoneline USB Adapter" to read the explanation of the problem. This information will be helpful if you require technical support from D-Link.

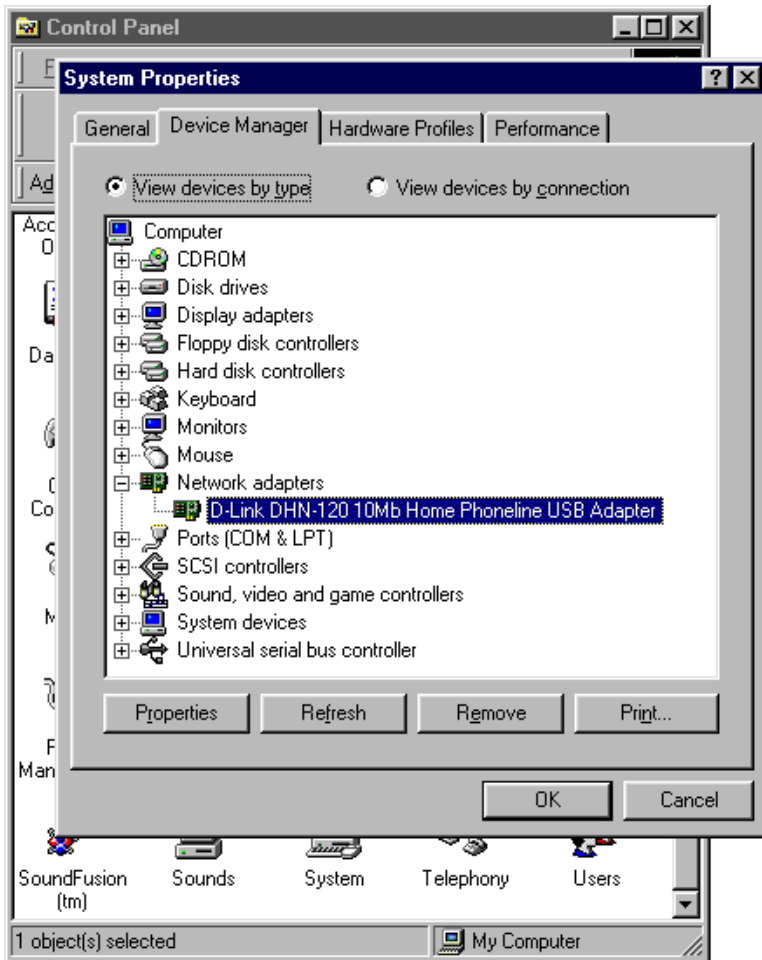


Figure 35: System Properties

Verify Cable Connections

Check to see that the computer(s) you are troubleshooting are properly connected to either a phone jack or another computer. Also make sure that if both computers are connected to phone jacks, that the phone line (and phone number) is the same for both jacks. You may want to plug a phone into each phone jack to ensure that it is working properly.

Understanding Indicators

Your Network Adapters have indicators or lights that can give you information about your network traffic and help you determine problems when troubleshooting.

Your DHN-120's have three indicators labeled "Link", "Activity", and "Power" at the front of their top panels. A steady green "LINK" light indicates a good connection between cards. A flashing green "Activity" light indicates that the Network Adapter is sending or receiving data. A steady green "Power" light indicates that the DHN-120 is receiving enough power.

Please note that if the DHN-120 is plugged into a USB hub, or a USB port on a monitor, that the port must be self-powered. If the "Power" light is not steady green, you may want to plug the DHN-120 directly to a USB port on your computer.

Getting Technical Support

D-Link provides free technical support. North American customers can contact D-Link technical support through our web site, e-mail, or by phone. North American technical support is available Monday through Friday from 6:00 a.m. to 6:00 p.m. (PST) at 949-788-0805 (option #4).

www.dlink.com

Email at tech@dlink.com.

Thank you for purchasing the D-Link DHN-920. We like to receive feedback from our customers concerning our products. Please take a moment to visit our web site. You can register your purchase on-line, learn more about the newest networking products, and let us know the things your new network has empowered you to do.

Technical Specifications

Standards:	HomePNA 2.0 Compliant USB Specification version 1.0/1.1 Compliant OHCI, UHCI
Required Current:	500MA bus current as a standard USB high-power device
Ports:	One upstream (USB Type B receptacle) Two RJ-11 (HomePNA 2.0)
Diagnostic LEDs:	Power Link (RJ-11) Activity (RJ-11)
Temperature:	Operating Temperature: 0°C to 50°C Storage Temperature: -25°C to 55°C
Humidity:	10% to 90%, non-condensing
Power Requirements:	Bus Powered 2.5 W, 0.5 A @ 5 VDC
Compliances:	CE, FCC Class B, VCCI, C-Tick, BSMI
Safety:	CSA International

Index

Adapter Installation, 36	LED Indicators, 38
Cables, 3	Playing Network Games, 31
Cables Connections, 37	Sharing Files, 19
cabling, ii	Sharing Printers, 26
Computer Identification, 17, 36	TCP/IP Protocol, 13
Installing Software, 5	Technical Specifications, 39
Kit Contents, 1	Technical Support, 38
	USB Adapters, 3

D-Link® Offices

AUSTRALIA	D-LINK AUSTRALASIA Unit 16, 390 Eastern Valley Way, Roseville, NSW 2069, Australia TEL: 61-2-9417-7100 FAX: 61-2-9417-1077 TOLL FREE: 1800-177-100 (Australia), 0800-900900 (New Zealand) URL: www.dlink.com.au E-MAIL: support@dlink.com.au , info@dlink.com.au
CANADA	D-LINK CANADA 2180 Winston Park Drive, Oakville, Ontario L6H 5W1 Canada TEL: 1-905-829-5033 FAX: 1-905-829-5223 BBS: 1-965-279-8732 FREE CALL: 1-800-354-6522 URL: www.dlink.ca FTP: ftp.dlinknet.com E-MAIL: techsup@dlink.ca
CHILE	D-LINK SOUTH AMERICA Isidora Goyenechea #2934 of.702, Las Condes, Santiago, Chile TEL: 56-2-232-3185 FAX: 56-2-2320923 URL: www.dlink.cl E-MAIL: ccasassu@dlink.cl , tsilva@dlink.cl
DENMARK	D-LINK DENMARK Naverland 2, DK-2600 Glostrup, Copenhagen, Denmark TEL:45-43-969040 FAX:45-43-424347 URL: www.dlink.dk E-MAIL: info@dlink.dk
EGYPT	D-LINK MIDDLE EAST 7 Assem Ebn Sabet Street, Heliopolis Cairo, Egypt

TEL: 202-2456176 FAX: 202-2456192 URL: www.dlink-me.com
E-MAIL: support@dlink-me.com, fateen@dlink-me.com

FRANCE

D-LINK FRANCE

Le Florilege #2, Allee de la Fresnerie
78330 Fontenay Le Fleury France
TEL: 33-1-30238688 FAX: 33-1-3023-8689
URL: www.dlink-france.fr E-MAIL: info@dlink-france.fr

GERMANY

D-LINK GERMANY

Bachstrae 22, D-65830 Kriftel Germany
TEL: 49-(0)6192-97110 FAX: 49-(0)6192-9711-11
URL: www.dlink.de BBS: 49-(0)6192-971199 (Analog) 49-(0)6192-971198 (ISDN)
INFO LINE: 00800-7250-0000 (toll free) HELP LINE: 00800-7250-4000 (toll free)
REPAIR LINE: 00800-7250-8000 E-MAIL: mbischoff@dlink.de, mboerner@dlink.de

INDIA

D-LINK INDIA

Plot No.5, Kurla-Bandra Complex Road,
Off Cst Road, Santacruz (E), Bombay - 400 098 India
TEL: 91-22-652-6696 FAX: 91-22-652-8914 URL: www.dlink-india.com
E-MAIL: service@dlink.india.com

ITALY

D-LINK ITALY

Via Nino Bonnet No. 6/b, 20154 Milano, Italy
TEL: 39-02-2900-0676 FAX: 39-02-2900-1723 E-MAIL: info@dlink.it URL: www.dlink.it

JAPAN

D-LINK JAPAN

10F, 8-8-15 Nishi-Gotanda, Shinagawa-ku, Tokyo 141 Japan
TEL: 81-3-5434-9678 FAX: 81-3-5434-9868 URL: www.d-link.co.jp
E-MAIL: kida@d-link.co.jp

RUSSIA

D-LINK RUSSIA

Michurinski Prospekt 49, 117607 Moscow, Russia
TEL: 7-095-737-3389, 7-095-737-3492 FAX: 7-095-737-3390 E-MAIL: vl@dlink.ru

SINGAPORE

D-LINK INTERNATIONAL

1 International Business Park, #03-12 The Synergy, Singapore 609917
TEL: 65-774-6233 FAX: 65-774-6322
URL: www.dlink-intl.com E-MAIL: info@dlink.com.sg

S. AFRICA

D-LINK SOUTH AFRICA

Unit 2, Parkside 86 Oak Avenue
Highveld Technopark Centurion, Gauteng, Republic of South Africa
TEL: 27(0)126652165 FAX: 27(0)126652186 CELL NO: 0826010806 (Bertus Moller)
CELL NO: 0826060013 (Attie Pienaar) E-MAIL: bertus@d-link.co.za, attie@d-link.co.za

SWEDEN

D-LINK SWEDEN

P.O. Box 15036, S-167 15 Bromma Sweden
TEL: 46-(0)8564-61900 FAX: 46-(0)8564-61901 E-MAIL: info@dlink.se
URL: www.dlink.se

TAIWAN

D-LINK TAIWAN

2F, No. 119 Pao-Chung Road, Hsin-Tien, Taipei, Taiwan, R.O.C.
TEL: 886-2-2910-2626 FAX: 886-2-2910-1515 URL: www.dlinktw.com.tw
E-MAIL: dssqa@tsc.dlinktw.com.tw

U.K.

D-LINK EUROPE

D-Link House, 6 Garland Road, Stanmore, London HA7 1DP U.K.
TEL: 44-20-8235-5555 FAX: 44-20-8235-5500 BBS: 44-20-8235-5511
URL: www.dlink.co.uk E-MAIL: info@dlink.co.uk

U.S.A

D-LINK U.S.A.

53 Discovery Drive, Irvine, CA 92618 USA
TEL: 1-949-788-0805 FAX: 1-949-753-7033 INFO LINE: 1-800-326-1688
BBS: 1-949-455-1779, 1-949-455-9616
URL: www.dlink.com E-MAIL: tech@dlink.com, support@dlink.com

Registration Card

Your name: Mr./Ms. _____
Organization: _____ Dept. _____
Your title at organization: _____
Telephone: _____ Fax: _____
Organization's full address: _____
Country: _____

Date of purchase (Month/Day/Year): _____

Product Model	Product Serial No.	* Product installed in type of computer (e.g., Compaq 486)	* Product installed in computer serial No.

(* Applies to adapters only)

Product was purchased from:

Reseller's name: _____
Telephone: _____ Fax: _____
Reseller's
full address _____

Answers to the following questions help us to support your product:

1. **Where and how will the product primarily be used?**
☐Home ☐Office ☐Travel ☐Company Business ☐Home Business ☐Personal Use

2. **How many employees work at installation site?**
☐1 employee ☐2-9 ☐10-49 ☐50-99 ☐100-499 ☐500-999 ☐1000+

3. **What network medium/media does your organization use ?**
☐Fiber-optics ☐Thick coax Ethernet ☐Thin coax Ethernet
☐10BASE-T UTP/STP ☐100BASE-TX ☐100BASE-T4 ☐100VGAnyLAN
☐Others _____

4. **What category best describes your company?**
☐Aerospace ☐Engineering ☐Education ☐Finance ☐Hospital ☐Legal
☐Insurance/Real Estate ☐Manufacturing ☐Retail/Chainstore/Wholesale
☐Government ☐Transportation/Utilities/Communication ☐VAR
☐System house/company ☐Other _____

5. **Would you recommend your D-Link product to a friend?**
☐Yes ☐No ☐Don't know yet

6. **Your comments on this product?**



TO:

D-Link®