

Wireless Day & Night Internet Camera

Anywhere / Anytime Monitoring

- Image/Sound Surveillance Through Internet & Wireless LAN
- Both Digital IP and Analog (BNC) Monitoring and Recording
- All-Weather Aluminum Housing
- High-Speed 802.11g WLAN
- Low-Light and No Light Capabilities
- Easy Deployment with UPnP/DDNS Support

FEATURES

- Stand-alone Internet camera with CPU & RAM, no need to attach to a PC
- All-weather aluminum housing for maximum heat dissipation and long-term reliability
- Local access through Ethernet and built-in high-speed 802.11g wireless LAN
- Remote access through Internet
- 4x digital zoom for close-up viewing *
- Listen and talk with 2-way audio **
- Surveillance software to control up to 16 cameras
- High compression ratio recording
- Powerful software for image capture & video recording
- Easy deployment with UPnP & DNS support, and web-based configuration

* 4x digital zoom enlarges an image by magnifying the pixels in a selected portion of the image by 4 times.

** 2-way audio requires a powered speaker to be connected to the camera (not included).

The DCS-3420 Wireless Day & Night Internet Camera is a versatile security system that allows you to watch and listen remotely from anywhere. This full-featured camera connects to Ethernet wired and wireless networks in a building or campus, and via broadband to the Internet. Equipped with a high-quality CCD sensor, digital zoom, low-light / no light capabilities, and advanced software functions for multi-camera monitoring and management, this camera provides a comprehensive system for surveillance over a LAN or the web.

An integrated CPU and Web server allow the DCS-3420 Internet Camera to provide a low-cost solution for home, office, and factory security monitoring needs. Its integrated Web server eliminates the need to connect the camera to a computer. Once installed, you can use the default IP address to gain access to the camera, view live streaming video, and make changes to camera settings.

In order to ease migration from traditional analog CCTV surveillance to IP-based digital systems, the DCS-3420 includes a standard BNC connector for analog CCTV video. The inclusion of both Ethernet and BNC connections allows you to simultaneously incorporate the DCS-3420 into both digital and analog surveillance systems. The camera also has a heat-dissipating aluminum body that is long-lasting even under the stresses of outdoor use.

The DCS-3420 uses MPEG-4 Simple Profile Mode to stream live video at up to 30 frames per second for real-time viewing. A CCD sensor provides sharp video images with lifelike color representation, and a 4x digital zoom* capability allows for close-up viewing over the Web interface. Using optional low-light / no light attachments, the camera has the ability to monitor and record video in rooms with minimal or no lighting, making it ideal for use in dark places.

Through a built-in microphone, you can watch and listen remotely as the DCS-3420 captures both sound and video from your site. The DCS-3420 takes surveillance to another level using two-way audio. By adding a powered speaker (not included) to the DCS-3420, you can also talk remotely with anyone at your camera site. For effective surveillance in and around a building, this camera comes with a built-in high-speed 802.11g wireless network interface, which allows images to be transmitted at up to 54Mbps. A 10/100BASE-TX Ethernet port is also provided for connection to a wired Ethernet network or directly to the Internet via a broadband router.

The DCS-3420 adheres to the Universal Plug-n-Play specification, which allows computers running Windows XP/ME to automatically recognize the camera and add it to the network. The DCS-3420 can be accessed and viewed from any network space.

Everything needed to deploy the DCS-3420 camera is included. Simple installation procedures, along with the built-in Web-based interface, offer easy integration into your network and security systems.



Technical Specifications

Camera Specifications

- Built-in 1/3-inch CCD sensor
- Minimum illumination: 0.5 Lux @ f2.0 (typical); 0 Lux (10 meter range with optional IR Lens)
- Resolution: 380 TV lines
- Seamless digital zoom with up to 4x magnification
- AGC / AWB / AES / BLC
- Electronic shutter: 1/60 ~ 1/100,000 secretary.
- CS mount lens: 6mm, f2.0
- Lens mount supports Auto Iris lens (DC/Video Drive) or IR Lens (10 meter range)
- 66° field of view

LED Indicator

Single two-color LED for status indication (POST, connection, heartbeat)

Reset Button

Reset to factory default settings

Extended I/O

- 1 relay alarm output (max. 24V DC 1A / 125V AC 0.5A)
- 1 Optic-isolated sensor input (max. 12V DC 50mA)

Memory

- SDRAM: 16Mbytes
- Flash ROM: 4Mbytes

Video Resolution

- NTSC support:
 - Up to 30fps at 176 x 120 (NTSC)
 - Up to 30fps at 352 x 240 (NTSC)
 - Up to 15fps at 704 x 480 (NTSC)
- PAL support:
 - Up to 25fps at 176 x 144 (PAL)
 - Up to 25fps at 352 x 288 (PAL)
 - Up to 12fps at 704 x 576 (PAL)

Video Algorithm Support

- MPEG4 simple profile or MJPEG compression for streaming video
- JPEG compression for still image

Video Features

- Adjustable image size and quality
- Time stamp and text overlays
- Three configurable motion detection windows
- Flip & Mirror

Audio Output

- Proprietary, 8K~32K bps audio codec
- 2-way audio, mono, supporting simplex, half-duplex, full-duplex modes
- Can be muted at server side by administrator (camera microphone on/off)
- Can be muted at client side (PC speaker on/off)
- Adjustable audio volume (PC microphone on/off)

Microphone

- Omni-directional
- Frequency 20 to 20000Hz
- S/N Ratio over 58dB

Audio

- Sampling rates: 8K / 24K / 32Kbps
- Full duplex audio communication
- Acoustic echo cancellation

Network Connectivity

- 802.11g Wireless LAN
- 802.3 10/100Mbps Fast Ethernet supporting NWay auto negotiation

Network Protocol Support

UPnP, TCP/IP, HTTP, SMTP, FTP, NTP, DNS, DDNS, DHCP, PPPoE

Optional Protocol

SMTP Authentication

Configuration

- 3 motion-detection windows
- 2 adjustable parameters: sensitivity and percentage

Digital Input

- Status checking of high, low, rising, falling
- DI triggered or motion triggered alert and notified via FTP or e-mail

Digital Output

On/Off

Video Bit Rate

64 ~ 1200Kbps

Remote Management

- Configuration can be accessed via web browser
- Take snapshots and save to local hard drive via web browser

Security

- Administrator and user group protected
- Password authentication
- Wireless LAN security: 64/128-bit WEP and WPA-PSK data encryption

Surveillance Software Functions

- Remote management/control of up to 16 DCS-3420 cameras
- Viewing of up to 16 cameras on one screen
- Supports all management functions provided in web interface
- Scheduled motion triggered, or manual recording options

Viewing System Requirements

- Operating System: Microsoft Windows 98 SE, 2000, ME, XP
- Browser: Internet Explorer v.6.0 or later

Optional Accessories

- Auto Iris Lens (3x Optical Zoom)
- IR Lens
- Illuminator for Night Vision
- External Speakers
- External All-Weather Housing (wired Ethernet connections only)

Wireless LAN

Radio and Modulation Schemes

- 802.11b: DQPSK, DBPSK and CCK
- 802.11g: BPSK, QPSK, 16QAM, 64QAM, OFDM

Operating Frequency

2400 to 24835MHz

Wireless Data Rates

- 802.11b: 11, 5.5, 2 and 1Mbps
- 802.11g: 54, 48, 36, 24, 18, 12, 9 and 6Mbps

Receiver Sensitivity

- 802.11b:
 - 11 Mbps (CCK): -84dBm
 - 5.5 Mbps (CCK): -86dBm
 - 2 Mbps (DQPSK): -88dBm
 - 1 Mbps (DBPSK): -90dBm (typically @PER < 8% packet size 1024 and @25° C + 5° C)
- 802.11g:
 - 54 Mbps (OFDM): -66dbm
 - 48 Mbps (OFDM): -70dbm
 - 36 Mbps (OFDM): -76dbm
 - 24 Mbps (OFDM): -79dbm
 - 18 Mbps (OFDM): -83dbm
 - 12 Mbps (OFDM): -85dbm
 - 9 Mbps (OFDM): -86dbm
 - 6 Mbps (OFDM): -86dbm (typically @PER < 10% packetsize 1024 and @25° C + 5° C)

Transmitter Output Power

- 802.11b: 16dBm (typical)
- 802.11g: 12dbm (typical)

Antennas

2dBi Gain dipole antenna with reverse SMA plug

Physical & Environmental

Power Input

12VDC, 1.5A

Power Supply

Through external AC switching power adapter

Power Consumption

7 watts maximum

Dimensions

170(L) x 80(W) x 60(H) mm (camera only, excluding antenna)

Weight

544 grams (camera only with antenna)

Operating Temperature

0° to 50° C (32° to 122° F)

Storage Temperature

-40° to 70° C (-40° to 158° F)

Humidity

20% to 80% non-condensing

Emission (EMI), Safety & Other Certifications

- FCC
- CE
- IC
- C-Tick

Radio

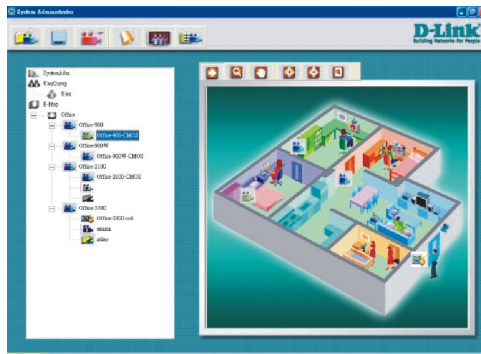
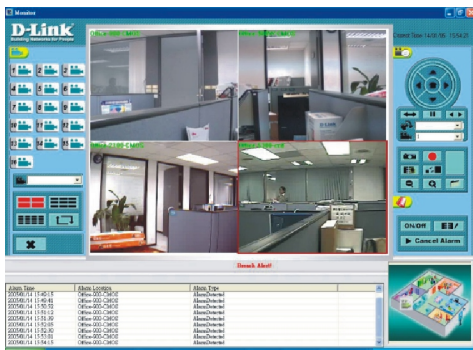
EN 300 328-2 (07-2000)

Safety

EN60950

Package Includes

- DCS-3420 Wireless Internet Camera
- 12V/1.5A external power adapter
- CAT 5 Ethernet cable
- Quick Installation Guide
- Master CD
- One dipole antenna
- Camera stand



Control multiple cameras on a network through the convenience of the Internet from a single computer



D-Link Worldwide Offices

U.S.A	TEL: 1-800-326-1688	FAX: 1-866-743-4905	Singapore	TEL: 65-6774-6233	FAX: 65-6774-63225
Canada	TEL: 1-905-8295033	FAX: 1-905-8295223	Australia	TEL: 61-2-8899-1800	FAX: 61-2-8899-1868
Europe, UK & Ireland	TEL: 44-20-8955-9000	FAX: 44-20-8955-9002	India	TEL: 91-22-2652 6696	FAX: 91-22-2652 8914
Germany	TEL: 49-6196-77990	FAX: 49-6196-7799300	Middle East (Dubai)	TEL: 971-4-391-6480	FAX: 971-4-390-8881
France	TEL: 33 1 30 23 86 88	FAX: 33 1 30 23 86 89	Egypt	TEL: 202-291-9035	FAX: 202-291-9051
Netherlands	TEL: 31-10-282-1445	FAX: 31-10-282-1331	Turkey	TEL: 90-212-289-5659	FAX: 90-212-289-7606
Belgium & Luxemburg	TEL: 32(0)2 517 7111	FAX: 32(0)2 517 6500	Iran	TEL: 90-212-289-5659	FAX: 90-212-289-7606
Switzerland	TEL: 41 (0) 1 832 11 00	FAX: 41 (0) 1 832 11 01	Pakistan	TEL: 92-21-454-8158	FAX: 92-21-453-5103
Sweden	TEL: 46-(0)8564-61900	FAX: 46-(0)8564-61901	Israel	TEL: 972-9-9715700	FAX: 972-9-9715601
Denmark	TEL: 45-43-969040	FAX: 45-43-424347	Latin America	TEL: 56-2-5838-950	FAX: 56-2-5838953
Norway	TEL: 47 99 300 100	FAX: 47 22 30 95 80	Brazil	TEL: 55-11-2185-9300	FAX: 55-11-2185-9322
Finland	TEL: 358-10 309 8840	FAX: 358-10 309 8841	South Africa	TEL: 27-12-665-2165	FAX: 27-12-665-2186
Italy	TEL: 39-02-2900-0676	FAX: 39-02-2900-1723	Russia	TEL: 7-495-744-0099	FAX: 7-495-744-0099
Spain	TEL: 34 93 409 0770	FAX: 34 93 491 0795	Japan	TEL: 81-3-5781-0963	FAX: 81-3-5781-0965
Portugal	TEL: 351 21 8688493		Korea	TEL: 82-2-890-5491	FAX: 82-2-890-549
Greece	TEL: 30 210 9914 512	FAX: 30 210 9916902	China	TEL: 86-10-58635800	FAX: 86-10-58635799
Czech Republic	TEL: 420 224 247 500		Taiwan	TEL: 886-2-6600-0123	FAX: 886-2-6600-3939
Hungary	TEL: 36 (0) 1 461 30 00	FAX: 36 (0) 1 461 30 09	Headquarters	TEL: 886-2-6600-0123	FAX: 886-2-6600-9898
Poland	TEL: 48 (0) 22 583 92 7	FAX: 48 (0) 22 583 92 76			