



D-Link

INSTALL GUIDE

Your Little Black Box



Power HDMI



SD/MMC card slot



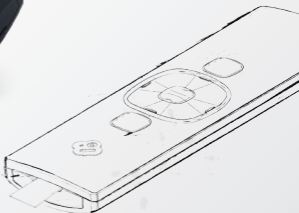
Your Two-Faced Remote

Play/Pause - We know you get it

Directional Pad - Navigate your way around

Enter Button - Accept the current selection / show playback menu

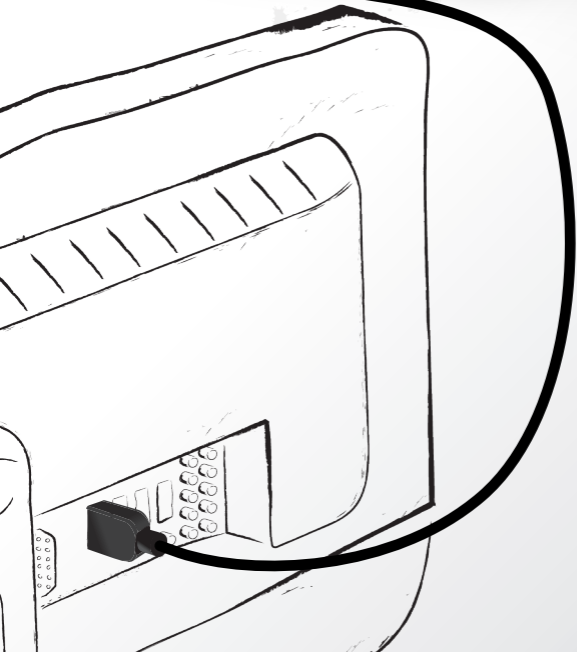
Menu - Go back / show main menu



Pull out the plastic tab from the remote to activate the battery.

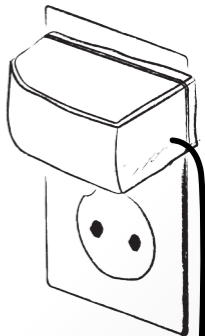
Step 1

Using the supplied HDMI cable, connect the Boxee Box to your TV.



Step 2

Using the supplied power adapter, plug the Boxee Box into a power source.



Power plug may differ by region.



Power Button

Step 3

Turn on your Boxee Box. Then use the TV's remote control to turn on your TV and set it to the correct HDMI input source. You should see the Boxee Box logo smiling at you.

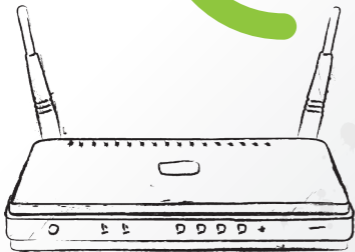


Step 4

Follow the on-screen instructions to configure your new Boxee Box and connect to your network.



Warning: To block adult content, configure Parental Controls under settings.



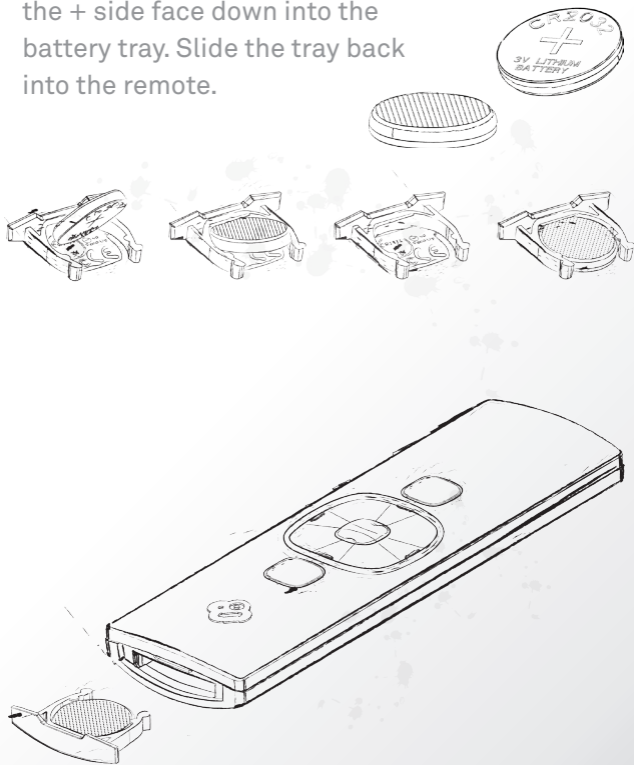
Pairing your Boxee Remote to the Boxee Box

Your remote comes from the factory already paired to the Boxee Box. If you are noticing interference with your remote from other devices, you may pair the remote with the Boxee Box in the easy steps below:

1. Make sure to move other devices away from the Boxee Box (or turn them off)
2. Put the remote in close proximity with the Boxee Box.
3. Press and hold the OK key on the simple side of the remote for 5 seconds.
4. Pairing is complete when you can control the Boxee Box. There is no visual indication of pairing on the device.
5. You can immediately use the remote control now.

Replacing the Battery

With a coin, remove the battery tray. Insert the battery with the + side face down into the battery tray. Slide the tray back into the remote.



Need Help With Something?

Australia:

Tel: 1300-766-868
24/7 Technical Support
Web: <http://www.dlink.com.au>
E-mail: support@dlink.com.au

India:

Tel: 1800-233-0000 (MTNL & BSNL
Toll Free)
+91-832-2885700 (GSM, CDMA
& Others)
Web: www.dlink.co.in
E-Mail: helpdesk@dlink.co.in

Singapore, Thailand, Indonesia, Malaysia, Philippines, Vietnam:

Singapore - www.dlink.com.sg
Thailand - www.dlink.co.th
Indonesia - www.dlink.co.id
Malaysia - www.dlink.com.my
Philippines - www.dlink.com.ph
Vietnam - www.dlink.com.vn

Korea:

Tel : +82-2-2028-1810
Monday to Friday 9:00am to 6:00pm
Web : <http://d-link.co.kr>
E-mail : g2b@d-link.co.kr

New Zealand:

Tel: 0800-900-900
24/7 Technical Support
Web: <http://www.dlink.co.nz>
E-mail: support@dlink.co.nz

South Africa and Sub Sahara Region:

Tel: +27-12-665-2165
08600 DLINK (for South Africa
only)
Monday to Friday 8:30am to 9:00pm
South Africa Time
Web: <http://www.d-link.co.za>
E-mail: support@d-link.co.za

Saudi Arabia (KSA):

Tel: +966 01 217 0008
Fax: +966 01 217 0009
Saturday to Wednesday 9.30AM to
6.30PM
Thursdays 9.30AM to 2.00 PM
E-mail: Support.sa@dlink-me.com

D-Link Middle East - Dubai, U.A.E.

Plot No. S31102,
Jebel Ali Free Zone South,
P.O.Box 18224, Dubai, U.A.E.
Tel: +971-4-8809022
Fax: +971-4-8809066 / 8809069
Technical Support: +971-4-8809033
General Inquiries: info.me@dlink-me.com
Tech Support: support.me@dlink-me.com

Egypt

1, Makram Ebeid Street - City Lights
Building
Nasrcity - Cairo, Egypt
Floor 6, office C2
Tel.: +2 02 26718375 - +2 02 26717280
Technical Support: +2 02 26738470
General Inquiries: info.eg@dlink-me.com
Tech Support: support.eg@dlink-me.com

Kingdom of Saudi Arabia

Office # 84 ,
Al Khaleej Building (Mujamathu Al-
Khaleej)
Opp. King Fahd Road, Olaya
Riyadh - Saudi Arabia
Tel: +966 1 217 0008
Technical Support:
+966 1 2170009 / +966 2 6522951
General Inquiries: info.sa@dlink-me.com
Tech Support: support.sa@dlink-me.com

Pakistan

Islamabad Office:
61-A, Jinnah Avenue, Blue Area,
Suite # 11, EBC, Saudi Pak Tower,
Islamabad - Pakistan
Tel.: +92-51-2800397, 2800398
Fax: +92-51-2800399

Karachi Office:

D-147/1, KDA Scheme # 1,
Opposite Mudassar Park, Karsaz Road,
Karachi – Pakistan
Phone: +92-21-34548158, 34326649
Fax: +92-21-4375727
Technical Support: +92-21-34548310,
34305069
General Inquiries: info.pk@dlink-me.com
Tech Support: support.pk@dlink-me.com

Iran

Unit 5, 5th Floor, No. 20, 17th Alley ,
Bokharest St. , Argentine Sq. ,
Tehran IRAN
Postal Code : 1513833817
Tel: +98-21-88880918,19
+98-21-88706653,54
General Inquiries: info.ir@dlink-me.com
Tech Support: support.ir@dlink-me.com

Morocco

M.I.T.C
Route de Nouaceur angle RS et CT
1029 Bureau N° 312 ET 337
Casablanca , Maroc
Phone : +212 663 72 73 24
Email: support.na@dlink-me.com

Lebanon RMA center

Dbayeh/Lebanon
PO Box:901589
Tel: +961 4 54 49 71 Ext:14
Fax: +961 4 54 49 71 Ext:12
Email: taoun@dlink-me.com

Bahrain

Technical Support: +973 1 3332904

Kuwait:

Technical Support: + 965 22453939 /
+965 22453949

Türkiye Merkez İrtibat Ofisi

Ayazağa Maslak yolu
Erdebil Cevahir İş Merkezi No: 5/A
Ayazağa / Maslak İstanbul
Tel: +90 212 2895659
Ücretsiz Müşteri Destek Hattı: 0 800 211 00 65
Web:www.dlink.com.tr
Teknik Destek: support.tr@dlink.com.tr

ISRAEL

מטלון סנטר
רח' המגשימים 20
קריית מטלון, פתח-תקווה 49348
פתח-תקווה, ת"ד 7060, D-link.
טלפונים: 073-277-11-77

Маленькая черная коробка



Питание HDMI



Слот для карт SD/MMC



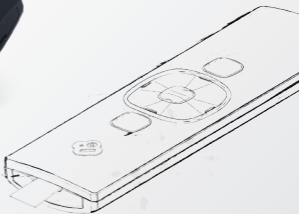
Двухсторонний пульт удаленного управления

**Play/Pause (Воспроизведение/
пауза)** - Мы уверены - Вы знаете
для чего это

Джойстик D-Pad - для управление
навигацией

Кнопка Enter - Принимает текущий
выбор / отображает меню
воспроизведения

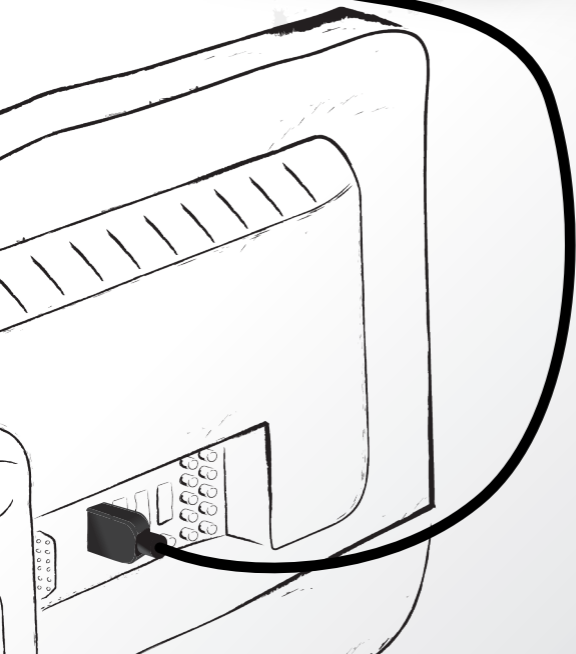
Меню - Переход назад / показывает
главное меню



Снимите наклейку с батарейки для ее активации.

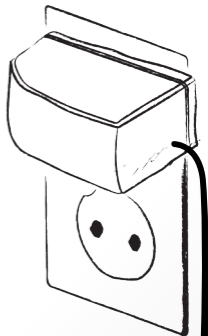
Шаг 1.

Подключите
Вохее Вох к
телевизору
с помощью
кабеля HDMI
из комплекта
поставки.



Шаг 2.

Подключите Voхее Voх к источнику питания с помощью адаптера питания из комплекта поставки.



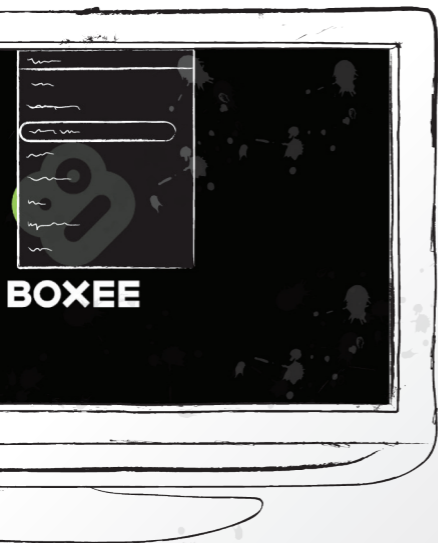
Кнопка питания

Тип розетки питания зависит от страны.



Шаг 3.

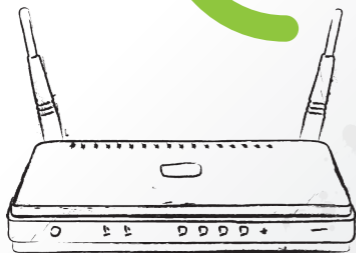
Включите Voxee Vox. Используйте телевизионный пульт для включения ТВ, и корректно установите Voxee Vox к HDMI разьему на телевизоре. На экране ТВ должен появиться улыбающийся логотип Voxee Vox.





Шаг 4.

Следуйте инструкциям на экране, чтобы настроить новое устройство Voxee Vox и подключить его к сети.



Предупреждение:

Для блокировки нежелательного контента, задайте параметры родительского контроля под настройками.

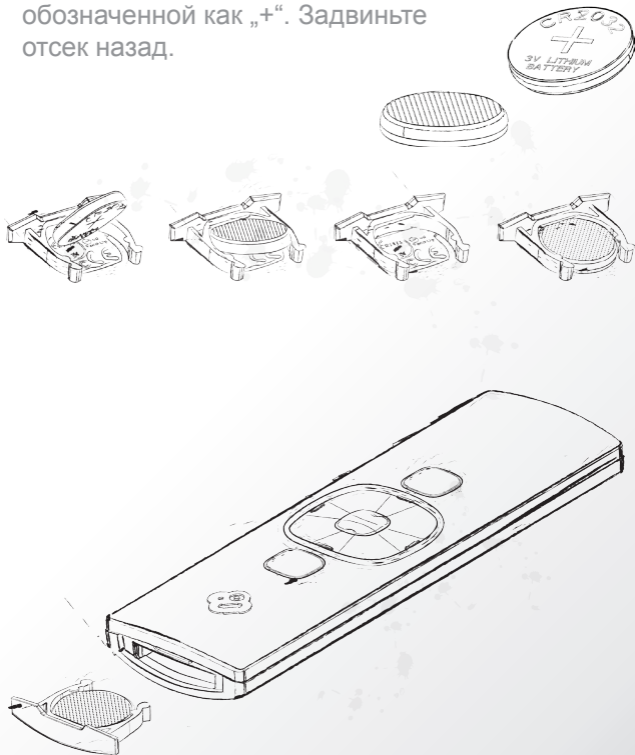
Подключение пульта ДУ к устройству Vohее Vох

Пульт ДУ по умолчанию уже подключен к Vohее Vох. Если возникают помехи от других устройств при попытке подключения пульта ДУ к Vohее Vох, то выполните следующие шаги:

1. Убедитесь, что другие устройства находятся на удалении от Vohее Vох (или они отключены).
2. Поместите пульт ДУ в непосредственной близости от Vohее Vох.
3. Нажмите и удерживайте клавишу ОК на панели удаленного устройства в течение 5 секунд.
4. Завершите подключение, когда будет возможность управлять Vohее Vох. При этом никакого визуального индикатора соединения на устройстве не появляется.
5. Теперь можно использовать пульт ДУ.

Замена батарейки

Извлеките батарейку со слота.
Вставьте батарейку в батарейный
отсек, лицевой стороной вверх,
обозначенной как „+“. Задвиньте
отсек назад.



Техническая поддержка

Техническая поддержка D-Link:

+7(495) 744-00-99

Техническая поддержка через Интернет

<http://www.dlink.ru>

e-mail: support@dlink.ru

More branches

Украина,

04080 г. Киев , ул. Межигорская, 87-А,
офис 18
Тел.: +38 (044) 545-64-40
E-mail: kiev@dlink.ru

Беларусь

220114, г. Минск, проспект
Независимости, 169 , БЦ "XXI Век"
Тел.: +375(17) 218-13-65
E-mail: minsk@dlink.ru

Казахстан,

050008, г. Алматы, ул. Курмангазы, дом
143 (уг. Муқанова)
Тел./факс: +7 727 378-55-90
E-mail: almaty@dlink.ru

Узбекистан

100015, г.Ташкент, ул. Нукусская, 89
Тел./Факс: +998 (71) 120-3770, 150-2646
E-mail: tashkent@dlink.ru

Армения

0038, г. Ереван, ул. Абеяна, 6/1, 4 этаж
Тел./Факс: + 374 (10) 398-667
E-mail: erevan@dlink.ru

Грузия

0162, г. Тбилиси,
проспект Чавчавадзе 74, 10 этаж
Тел./Факс: + 995 (32) 244-563

Lietuva

09120, Vilnius, Žirmūnų 139-303
Tel./faks. +370 (5) 236-3629
E-mail: info@dlink.lt

Eesti

Peterburi tee 46-205
11415, Tallinn, Eesti , Susi Bürookeskus
tel +372 613 9771
e-mail: info@dlink.ee

Latvija

Mazā noietņu 45/53 (ieeja no Nāras
ielas)
LV-1002, Rīga
tel.: +371 6 7618703
+371 6 7618703
e-pasts: info@dlink.lv

Tu Pequeña Caja Negra



Poder



HDMI



Ranura para tarjeta SD/MMC



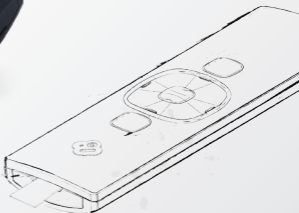
Tu Control Remoto de Dos Caras

Reproducir / Pausa - Sabemos que lo entiende _____

Pad direccional - Navegue libremente _____

Botón Enter - Acepta la selección actual / muestra el menú de reproducción _____

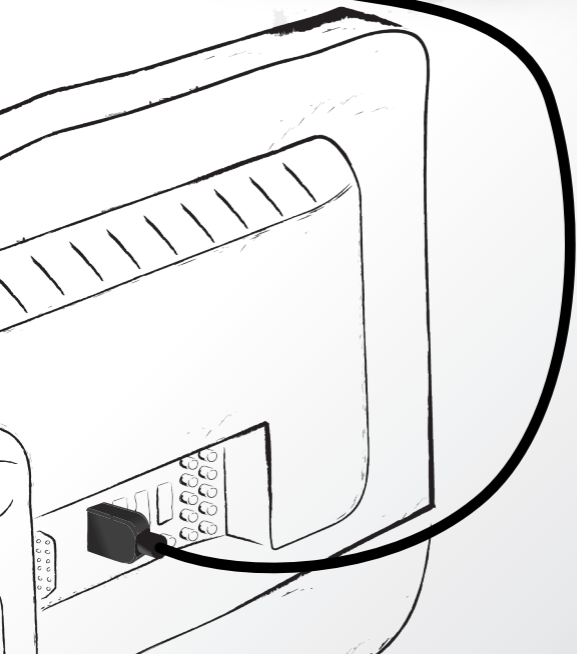
Menú - Atrás / muestra el menú principal _____



Tire de la pestaña de plástico del control remoto para activar la batería.

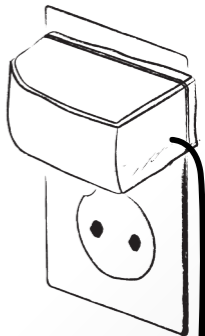
Paso 1

Utilizando el cable HDMI incluido, conecte la Caja Boxee en su TV.



Paso 2

Utilizando la fuente de poder incluida, conecte la caja Boxee en un toma corriente.



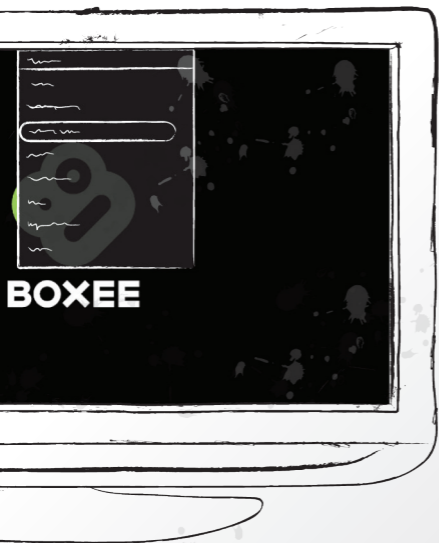
Botón de encendido

La conexión de poder puede ser diferente en cada región.



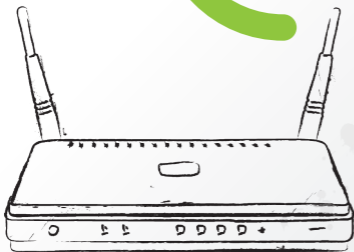
Paso 3

Encienda su caja Boxee. Luego utilice el control remoto de su TV para encenderla y ajustar la entrada HDMI correcta. Deberá ver el logo de la caja Boxee sonriéndole.



Paso 4

Siga las instrucciones en pantalla para configurar su nueva caja Boxee y conecte a su red.



Precaución: Para bloquear contenido adulto, configure el Control Parental en los ajustes.

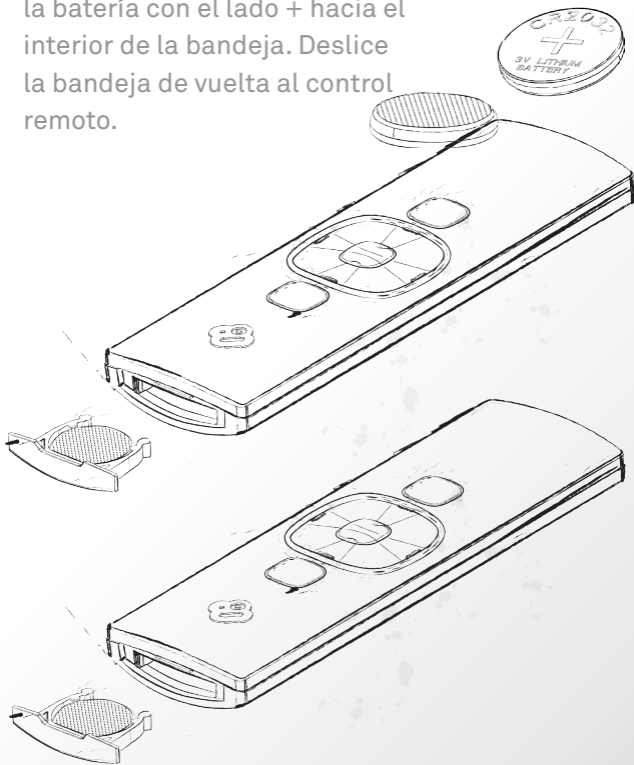
Sincronice su Control Remoto Boxee a la Caja Boxee

Su control remoto viene de fábrica ya sincronizado a la caja Boxee. Si usted toma en cuenta la interferencia con el control remoto de otros dispositivos, puede sincronizar el control remoto con la caja Boxee siguiendo los pasos a continuación :

1. Asegúrese de mover los otros dispositivos lejos de la caja Boxee (o apagarlos)
2. Coloque el control remoto cerca de la caja Boxee
3. Mantenga oprimido el botón OK en el lado simple del control remoto por 5 segundos.
4. La sincronización esta completa cuando ya puede controlar la caja Boxee. No hay una indicación visual de la sincronización de los dispositivos.
5. Puede inmediatamente utilizar el control remoto.

Reemplazar la batería

Con una moneda, remueva la bandeja de la batería. Inserte la batería con el lado + hacia el interior de la bandeja. Deslice la bandeja de vuelta al control remoto.



SOPORTE TÉCNICO

SOPORTE TÉCNICO PARA USUARIOS EN LATINO AMERICA

Soporte técnico a través de los siguientes teléfonos de D-Link

PAIS	NUMERO
Argentina	0800 - 12235465
Chile	800 - 835465 ó (02) 5941520
Colombia	01800 - 9525465
Costa Rica	0800 - 0521478
Ecuador	1800 - 035465
El Salvador	800 - 6335
Guatemala	1800 - 8350255
México	01800 - 1233201
Panamá	011 008000525465
Perú	0800 - 00968
Venezuela	0800 - 1005767

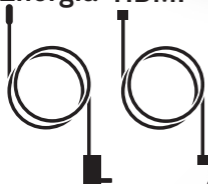
Soporte Técnico de D-Link a través de Internet

Horario de atención Soporte Técnico en www.dlinkla.com
e-mail: soporte@dlinkla.com & consultas@dlinkla.com

Seu pequeno Black Box



Energia HDMI



Slot do cartão SD/MMC



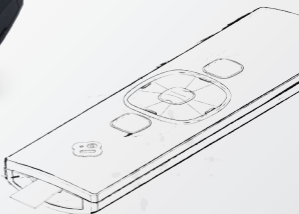
Seu remoto frente e verso

Play/Pause - Sabemos que você conseguiu

Base direcional - Navegue por onde quiser

Botão Enter - Aceita a seleção atual / exibe o menu de reprodução

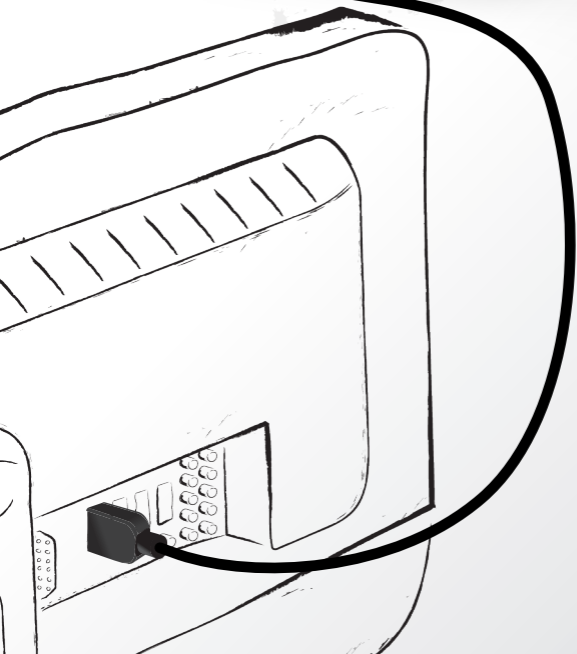
Menu - Volta / exibe menu principal



Puxe a lingueta de plástico do controle remoto para ativar a bateria.

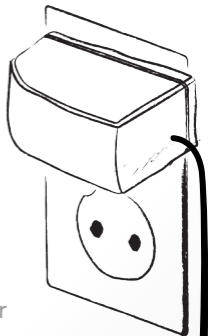
Etapa 1

Utilizando o cabo HDMI fornecido, conecte o Boxee Box à sua TV.



Etapa 2

Utilizando o adaptador de alimentação fornecido, conecte o Boxee Box a uma tomada.



Botão Power

O plugue de energia pode diferir por região.



Etapa 3

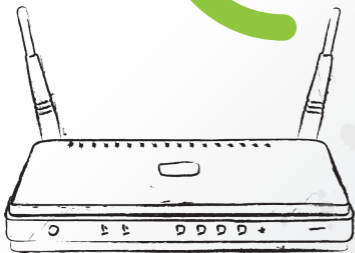
Ligue o seu Boxee Box. Em seguida, utilize o controle remoto da TV para ligá-la e configure-a para a entrada HDMI correta. Você deverá ver o logo Boxee Box sorrindo para você.





Etapa 4

Siga as instruções na tela para configurar seu novo Boxee Box e conectá-lo à sua rede.



Atenção! Para bloquear conteúdo adulto, configure o Controle de pais em Configurações.

Emparelhando seu Boxee Remote com o Boxee Box

Seu controle remoto já vem de fábrica preparado para o Boxee Box. Se você está observando interferência de outros dispositivos no seu controle remoto, pode emparelhar o controle com o Boxee Box seguindo as etapas simples abaixo:

1. Certifique-se de afastar outros dispositivos do Boxee Box (ou desligá-los)
2. Coloque o controle remoto bem próximo do Boxee Box.
3. Pressione e mantenha a tecla OK pressionada no lado simples do controle remoto por cinco segundos.
4. O emparelhamento está completo quando você pode controlar o Boxee Box. Não há indicação visual de emparelhamento no dispositivo.
5. Você pode utilizar o controle remoto imediatamente agora.

Substituição da bateria

Com uma moeda, remova a bandeja da bateria. Insira a bateria com o lado + voltado para baixo na bandeja de bateria. Deslize a bandeja de volta no controle remoto.



Suporte Técnico

Caso tenha dúvidas na instalação do produto, entre em contato com o Suporte Técnico D-Link por:

Chat Online

www.dlink.com.br/suporte

E-mail

suporte@dlink.com.br

Back Office

backoffice@dlink.com.br *

*Acionar Garantia para 4 ou mais equipamentos

Telefones

São Paulo: (11) 2755-6950

*GO: 4052-1850 (Ligação local)

*Nordeste: 0800-7024104

*Demais Estados: 4062-1850 (Ligação local)

*Apenas Modems ADSL

Garantia diferenciada vendida pela internet. Agilidade e tranquilidade para suas atividades!

Conheça: <http://garantiapremium.dlink.com.br>

Atendimento disponível das 9h as 21h de segunda a sexta feira e aos sábados das 9h as 15h

Kotak Hitam Kecil Anda



Slot kartu SD/MMC

Power

HDMI



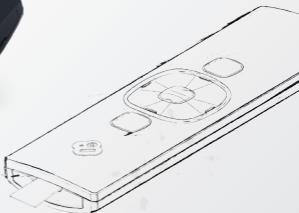
Pengendali Jarak Jauh Anda yang mempunyai Dua Sisi

Play/Pause - Kami tahu anda sudah mengerti maksudnya

Directional Pad - Navigasi arah anda

Tombol Enter - Menerima seleksi yang dipilih / menampilkan menu pemutar balik

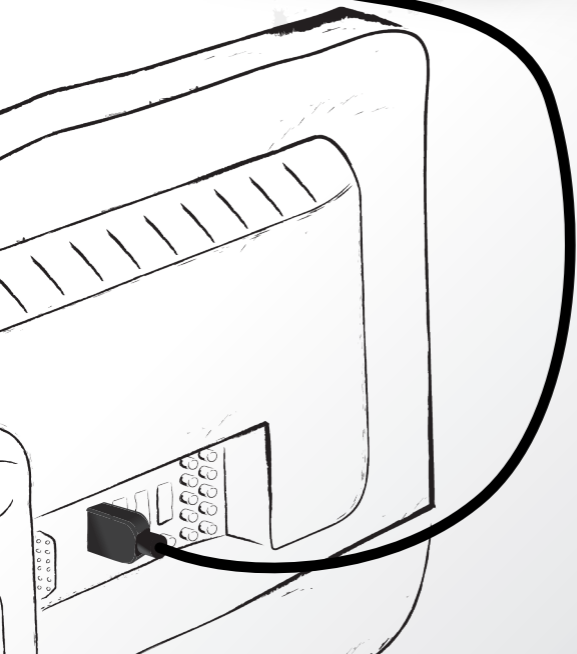
Menu - Kembali / menampilkan menu utama



Lepaskan plastik dari pengendali jarak jauh untuk mengaktifkan baterai.

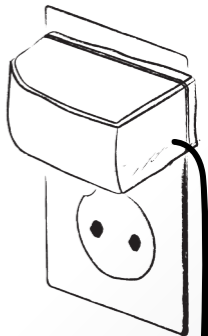
Langkah 1

Gunakan kabel HDMI yang disediakan, hubungkan Boxee Box ke TV anda.



Langkah 2

Gunakan power adapter yang disediakan, hubungkan Boxee Box ke colokan listrik.



Tombol Power

Colokan Power mungkin berbeda sesuai dengan wilayah.



Langkah 3

Hidupkan Boxee Box anda. Kemudian gunakan pengendali jarak jauh TV untuk menghidupkan TV anda dan pilih sumber masukan HDMI yang sesuai. Anda akan melihat logo Boxee Box tersenyum ke anda.

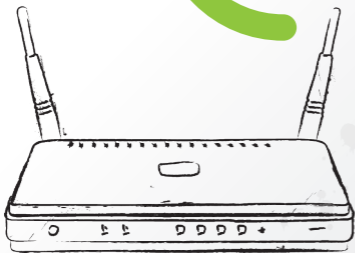


Langkah 4

Ikuti petunjuk-petunjuk di layar untuk mengatur Boxee Box baru anda dan hubungkan ke jaringan anda.



Peringatan: Untuk membatasi konten dewasa, atur Parental Controls dibawah menu Settings.



Sambungkan Pengendali Boxee ke Boxee Box

Pengendali anda sudah disambungkan ke Boxee Box dari pabriknya. Jika anda mengalami gangguan dari perangkat lainnya yang menyebabkan pengendali anda tidak bekerja, anda dapat menyambungkannya ke Boxee Box secara mudah dengan langkah-langkah dibawah:

1. Pastikan perangkat lain dijauhkan dari Boxee Box (atau matikan perangkat lain tersebut)
2. Letakkan pengendali dekat dengan Boxee Box.
3. Tekan dan tahan tombol OK pada bagian sisi yang sederhana selama 5 detik.
4. Proses penyambungan selesai ketika anda dapat mengatur Boxee Box. Tidak ada indikasi visual dari proses penyambungan perangkat.
5. Anda dapat menggunakan pengendali jarak jauh anda sekarang.

Mengganti Baterai

Dengan sebuah koin, keluarkan wadah baterai. Masukkan baterai dengan sisi muka + menghadap ke wadah baterai. Masukkan kembali wadah ke dalam pengendali.



Dukungan Teknis

Dukungan Teknis D-Link melalui telepon:

Tel: +62-21-5731610

Dukungan Teknis D-Link melalui Internet:

Email : support@dlink.co.id

Website : <http://support.dlink.co.id>

BOXEE BOX