

# QUICK INSTALL GUIDE

DNS-343

VERSION 1.0



**D-Link<sup>®</sup>**

**STORAGE**

## Package Contents

- D-Link DNS-343 4-Bay Network Storage Enclosure
- CD-ROM with Manual and Software
- Quick Installation Guide
- Power Adapter
- Power Cable Clip
- CAT5 Ethernet Cable

*If any of the above items are missing, please contact your reseller.*

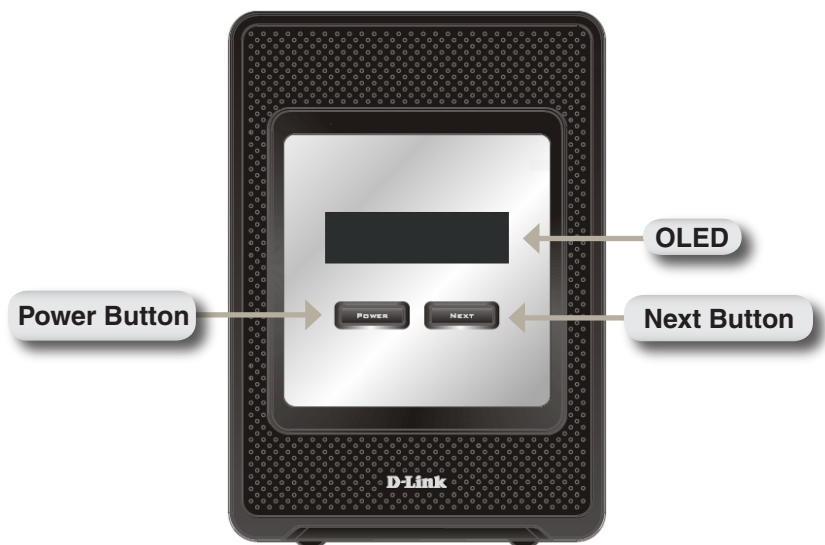
## System Requirements

- 1GHz Processor / 512MB RAM
- 200MB available space
- CD-ROM drive
- Internet Explorer 6.0 or Mozilla Firefox 1.0 and above
- Windows® XP (Service Pack 2) or Vista™

**Note:** The DNS-343 requires installation of a hard drive before it can be used. The hard disk must be a 3.5" SATA Hard Drive of any capacity.

# Hardware Overview

## Front View

**Power Button:**

Use this button to switch the device on or off. To switch on the device press the button once. To switch off the device hold the button down for 5 seconds.

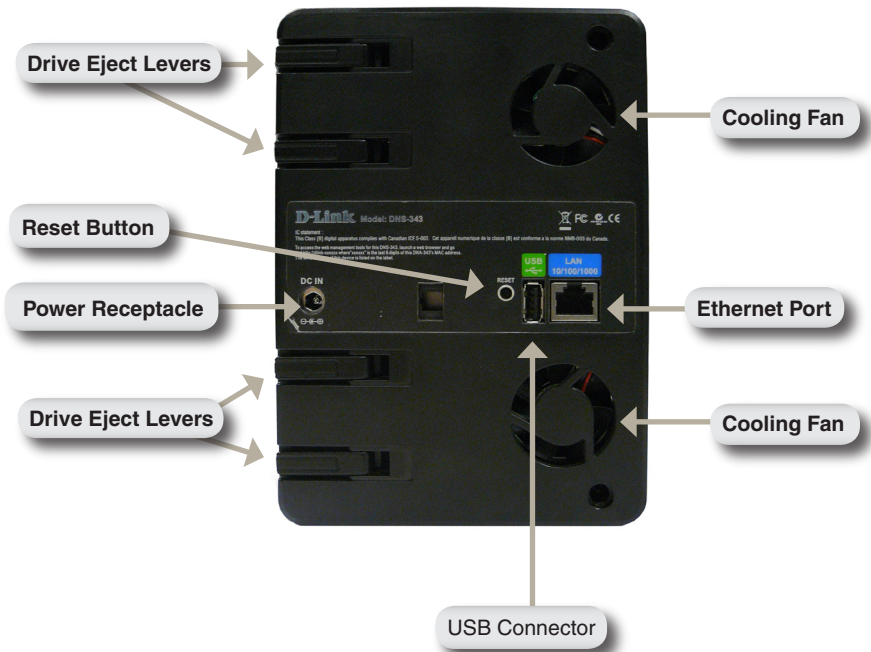
**OLED:**

This screen displays System Information, HD Status, and Server Status.

**Next Button:**

Use this button to display the three status screens on the OLED. Press the button once to alternate between the different status screens

## Rear View



---

## Using the OLED

The DNS-343 network storage enclosure features an OLED that enables the administrator to easily view information about the DNS-343. The OLED screen displays information about the network connection status and the number of hard drives installed and the bay ID's they are installed in. The OLED has three different screens:

**System Information** - This screen shows the following information:

- The hostname of the DNS-343
- The firmware version
- The IP address of the DNS-343
- The operating temperature

**Hard Drive Status** - This screen shows the following information:

- The percentage of space used on the hard drives

**Server Status** - This screen shows the following information:

- Whether a printer is connected to the unit
- The status of the UPNP server
- The status of the iTunes server
- The status of the FTP Server

Press the **Next** button once to alternate between the different Status screens

## Hardware Installation

1. Access the drive bays by sliding the faceplate up until it unlatches from the device.



2. Once the faceplate is unlatched, pull it off of the device, exposing the drive bays.



3. Insert a 3.5" SATA hard drive into an available drive bay. Make sure to align the drive connector to the endpoint in the DNS-343. Gently push the drive in until it connects. Repeat for each drive you are placing in the DNS-323.



4. Attach the faceplate to the front of the device.



5. Connect an Ethernet cable into the available Ethernet port. This cable should connect the DNS-343 to your local network or directly to a computer for configuration.



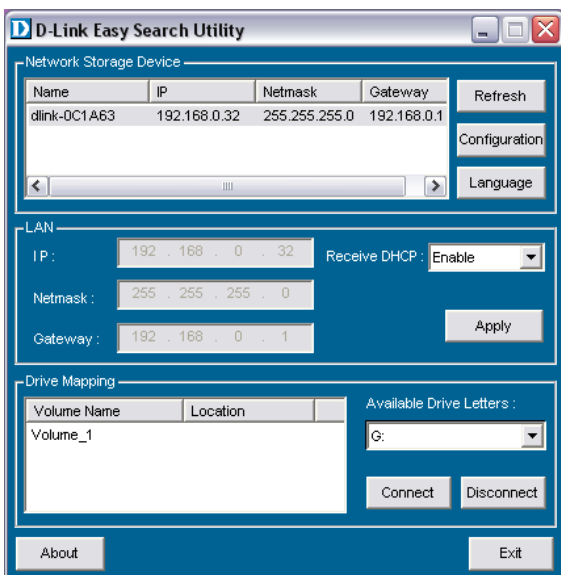
6. Finally, connect the supplied power adapter to the power receptacle on the back of the device.



# Easy Search Utility

When first powered on, during the initial boot sequence, the DNS-343 will wait to be assigned an IP address via DHCP. If it does not receive a DHCP assigned IP address, by default it will boot up with a self-assigned IP address of 192.168.0.32.

The Easy Search Utility provided on the DNS-343 CD-ROM makes it simple to find any DNS-343 devices on your network, and it is recommended to use the Easy Search Utility when accessing and configuring the DNS-343 for the first time. Each DNS-343 will have a unique name of dlink-xxxxxx where 'xxxxxx' is the last six digits of its MAC address.





# Getting Started

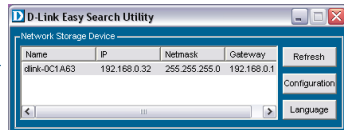
When logging into the DNS-343 for the first time, you will be asked to choose a drive configuration type and format the drives.

There are four basic configuration options; Standard, JBOD, RAID 1, and RAID 5. There are also three custom configuration options, which are combinations of RAID 0/JBOD, RAID 1/JBOD, and RAID 5/JBOD.

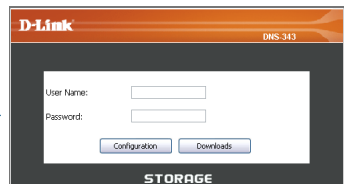
From the DNS-343 CD, select **Easy Search Utility**.



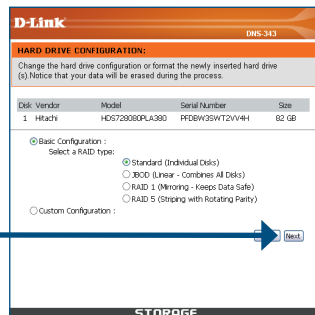
Highlight an available DNS-343 and click **Configuration** to access the web-based utility.



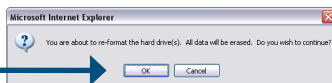
At the login screen, type **admin** for the user name and leave the password field blank. Click **Configuration**.



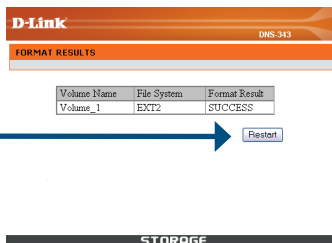
Select a type of hard drive configuration, and click **Next**.



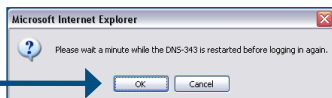
A message appears warning that when the drives are formatted all data will be erased. Click **OK** to continue.



When formatting is complete, the results will display. Click **Restart** to continue.



A message informing you that the DNS-343 will restart appears. Click **OK**.



After the DNS-343 restarts, type **admin** for the user name and leave the password field blank. Click **Configuration**.



The Web UI will appear. Your DNS-343 setup is now complete.

## Mapping a Drive

The Easy Search Utility makes it simple to map drives to your computer. To get started, insert the DNS-343 CD into your CD-ROM and launch the Easy Search Utility and launch the Easy Search Utility.

The screenshot shows the D-Link Easy Search Utility window. It is divided into three main sections: Network Storage Device, LAN, and Drive Mapping. The Network Storage Device section contains a table with columns for Name, IP, Netmask, and Gateway. The LAN section contains input fields for IP, Netmask, and Gateway, along with a Receive DHCP dropdown and an Apply button. The Drive Mapping section contains a table with columns for Volume Name and Location, an Available Drive Letters dropdown, and Connect and Disconnect buttons. Three callout boxes with arrows point to specific elements: the first points to the Network Storage Device table, the second points to the Drive Mapping table, and the third points to the Available Drive Letters dropdown.

Select an available DNS-343.

Available volumes will be displayed under Drive Mapping. Highlight the drive you want to map.

Select an available drive letter from the drop-down menu and click **Connect**.

Name	IP	Netmask	Gateway	Refresh
dlink-0C1A63	192.168.0.32	255.255.255.0	192.168.0.1	Refresh

Configuration  
Language

LAN

IP : 192 . 168 . 0 . 32 Receive DHCP: Enable

Netmask : 255 . 255 . 255 . 0

Gateway : 192 . 168 . 0 . 1 Apply

Drive Mapping

Volume Name	Location	Available Drive Letters :
Volume_1		G: [v]

Connect Disconnect

About Exit

Once connected, your mapped drive(s) will appear in My Computer as network drives.

# Technical Support

D-Link's website contains the latest user documentation and software updates for D-Link products.

U.S. and Canadian customers can contact D-Link Technical Support through our website or by phone.

## United States

### Telephone

(877) 453-5465

### World Wide Web

<http://support.dlink.com>

## Canada

### Telephone

(800) 361-5265

### World Wide Web

<http://support.dlink.com>



Version 1.0  
April 4, 2008

Copyright ©2008 D-Link Corporation/D-Link Systems, Inc. All rights reserved. D-Link, and the D-Link logo are registered trademarks of D-Link Corporation or its subsidiaries in the United States and other countries. Other trademarks are the property of their respective owners. Product specifications, size and shape are subject to change without notice, and actual product appearance may differ from that depicted on the packaging. Visit [www.dlink.com](http://www.dlink.com) for more details.