

D-Link

DI-713 Quick Installation Guide

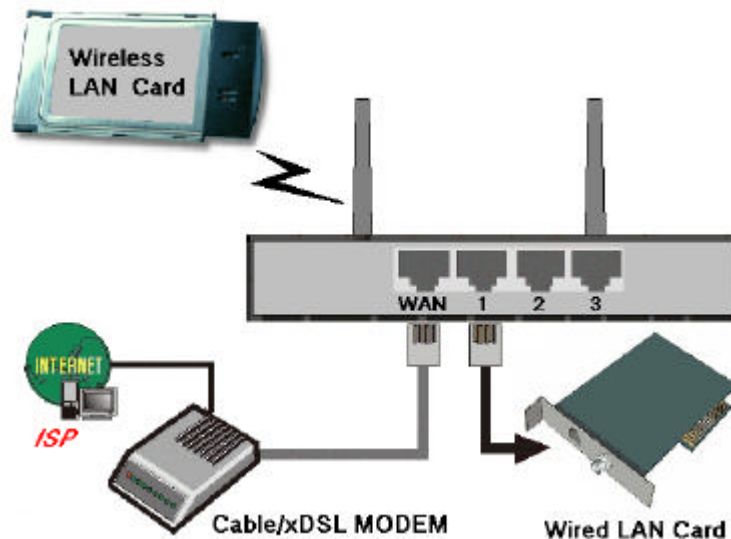
1. Hardware Installation

A. Setup the LAN connection:

1. Wired LAN connection: connect an Ethernet cable from your computer's Ethernet port to one of the LAN ports of the DI-713.
2. Wireless LAN connection: make sure the antennas are in a vertical position (if not, rotate more than 90 degrees).

B. **Power on:** plug the power cord into the back of the DI-713 and connect the AC adapter to a power outlet and turn the power switch on. The DI-713 will automatically enter the self-test phase. When in the self-test phase, the indicators M1 and M2 will be lit for about 5 seconds, and then M1 and M2 will flash three times to indicate that the self-test operation has finished. The M1 LED will flash continuously once per second to indicate that the DI-713 is in normal operation.

C. **Setup the WAN connection:** connect the network cable from your cable or DSL modem to the WAN port of the DI-713. If you don't see a link light on the WAN LED after everything is connected and turned on, try the network cable provided with the DI-713. When the WAN LED light is lit, the connection to your cable or DSL modem is complete.

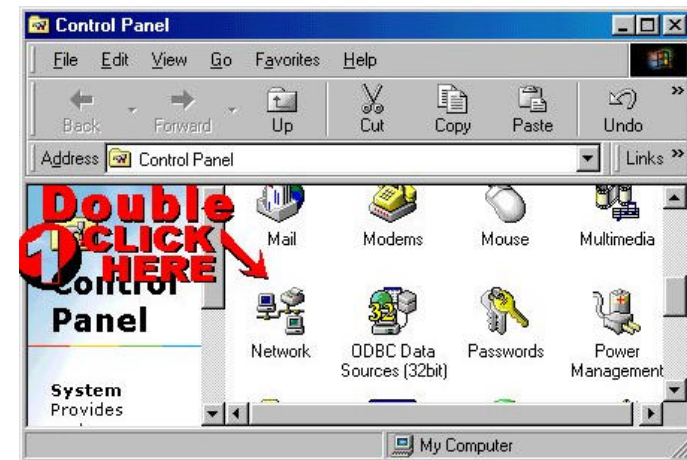


2. Find and Write Down Your Computer's Internet Settings

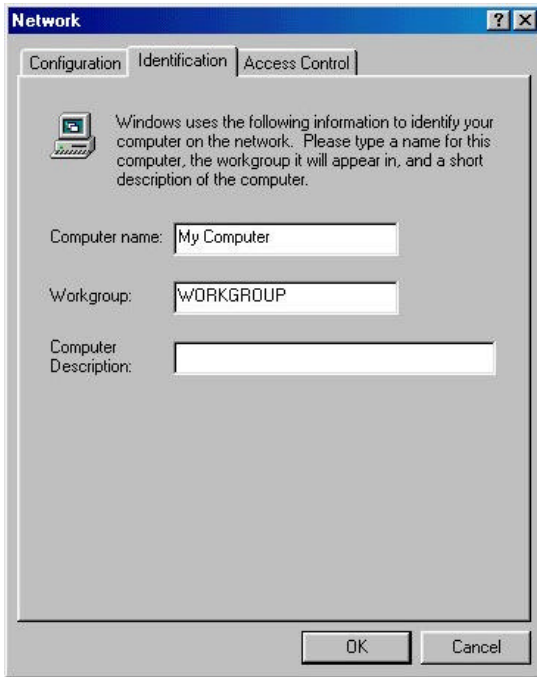
A. Open the Control Panel



B. Find and Double Click the Network Icon

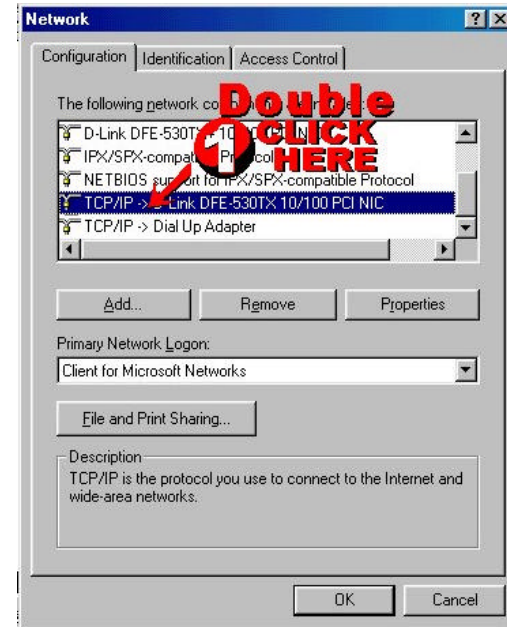


C. Click the Identification Tab



- D. Write down your “Computer name: (like “My Computer” in the above picture including spaces and any punctuation) in the Settings box in Step 2-G.

- E. Click the Configuration Tab. It should list your network (Ethernet) adapter and the loaded network protocols and services. Find and double click TCP/IP for the network adapter that was connected to your Cable/DSL modem.



STOP!

In order to continue, you need to determine whether or not you are using PPPoE.

What is PPPoE?

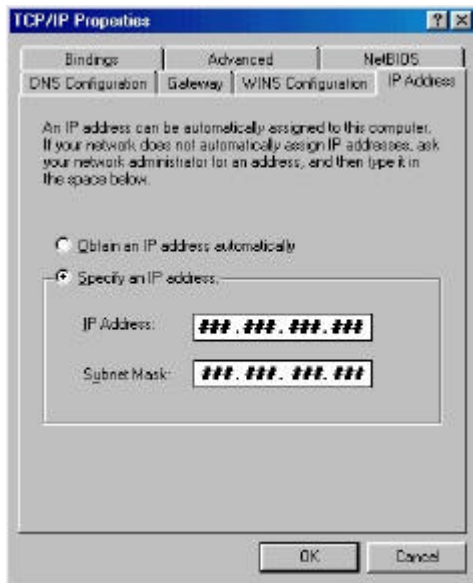
PPPoE stands for Point-to-Point Protocol over Ethernet. It is a non-standard method of connecting to your ISP to gain an IP address. It relies upon a software client that is provided by the ISP. An IP address is required to gain a connection to the Internet.

How can I tell if I am using PPPoE?

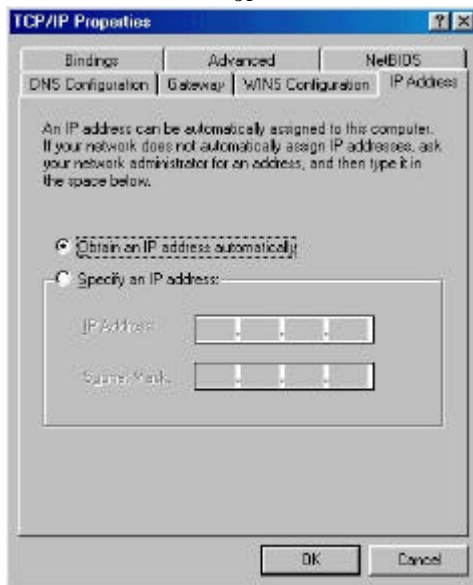
PPPoE requires a client on your computer. If you have a broadband connection and have to login to your provider in a similar fashion to how you would dial in with a modem, you are probably using PPPoE. If you are simply connected to the Internet when you turn on your computer, you probably are not. The safest way to check is to call your provider, or read the documentation provided with your Internet service to determine if you currently use PPPoE.

If you are using PPPoE, skip to Step 3. Otherwise, continue with the next step.

- F. After you double-click the TCP/IP setting for you network adapter (Step 2-E), you should see one of the following screens:



or

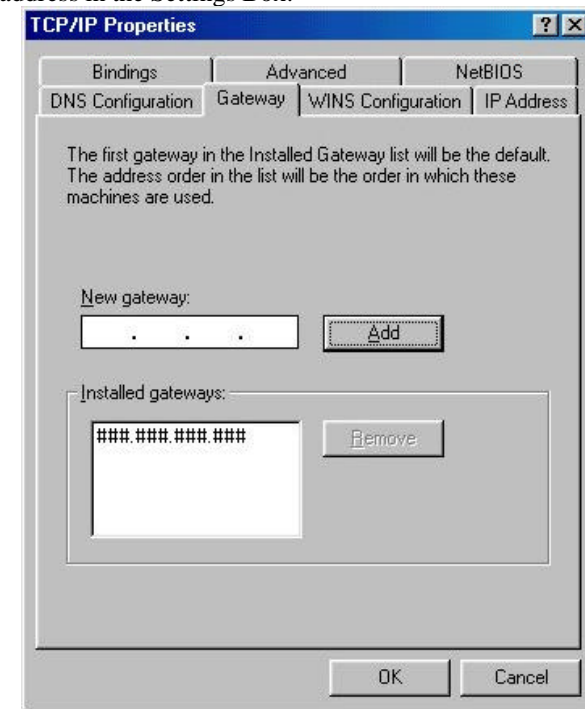


G. When asked, write down the information in the following boxes.

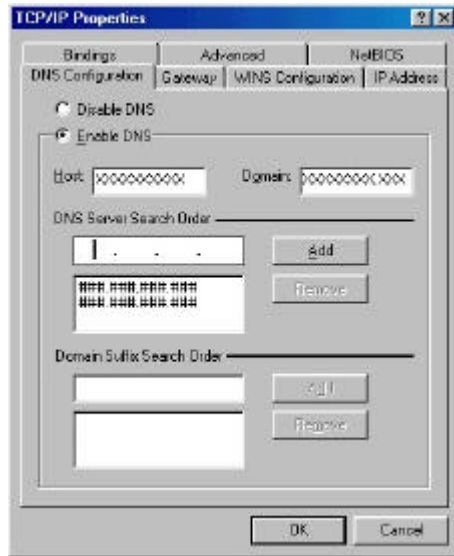
Settings	
Computer Name	_____
Type of IP Address	_____

IP Address	_____
Subnet Mask	_____
Gateway	_____
Primary DNS	_____
Secondary DNS	_____

- H. Write down whether "Obtain An IP Address Automatically" or "Specify an IP Address" is checked in the "Type of Address" box in the Settings Box. If "Obtain An IP Address Automatically" is selected, skip to step 3.
- I. If Specify is checked, write down the IP Address and Subnet Mask in the spaces provided in the Settings Box.
- J. Find your Gateway Address by clicking on the Gateway tab. Write down your Gateway address in the Settings Box.



- K. Click the "DNS Configuration" tab. Find and write down your DNS Server Search Order in the Settings Box. The first number is the Primary DNS and the second number is the Secondary DNS.



3. Reconfiguring your computer

You are now ready to reconfigure your computer to work with the DI-713.

If you are using a wireless network card to access the DI-713, change the following settings of the wireless network card to:

ESSID: default

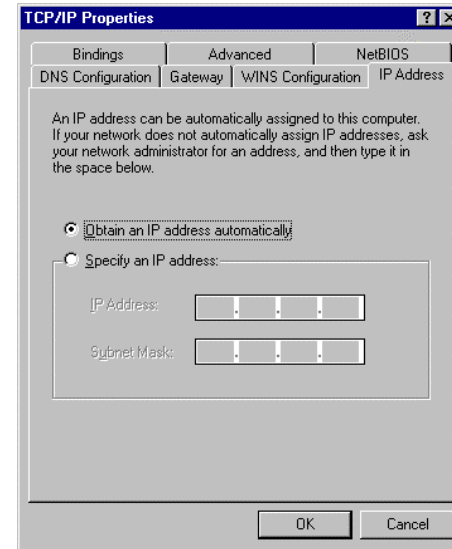
Channel: 6

WEP: disable

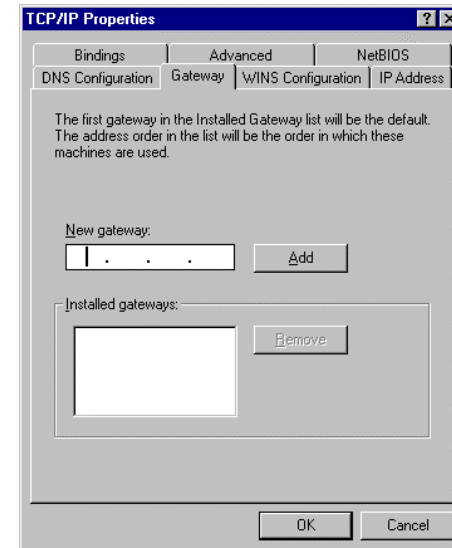
Refer to your wireless network adapter User's Manual for information on changing the wireless settings.

Continue with the next step to reconfigure your TCP/IP settings.

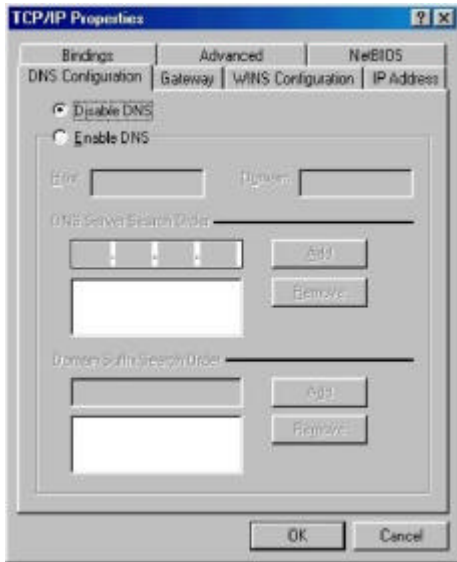
A. Click the "IP Address" tab and select "Obtain an IP address automatically".



B. Click the "Gateway" tab. Highlight the Installed Gateways and press the "Remove" button.



C. Click on the "DNS Configuration" tab and select "Disable DNS".

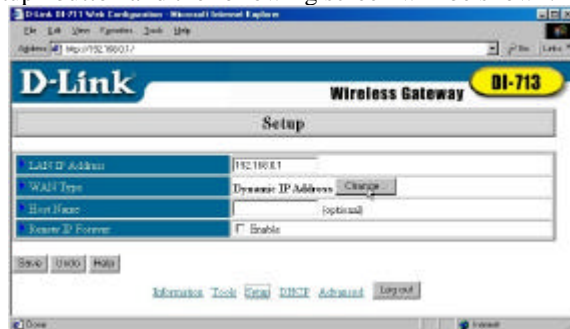


D. Click “OK” and restart the computer. Continue with Step 4.

4. Configuring the DI-713 without PPPoE

Stop! If you are using PPPoE skip ahead to Step 5. Otherwise, continue with the following steps.

- Launch Netscape or Internet Explorer. You must use Netscape 4.0 or Internet Explorer 4.0 or higher. Type “192.168.0.1” in the “Location” (for Netscape) or “Address” (for IE) field and press ENTER.
- In the “System Password” field, type “admin” and click on the “Log in” button.
- Press the “Setup” button and the following screen will be shown.



D. Press the “Change ...” button. Refer to the “Type of IP Address” field in the Settings box in Step 2-G to select the correct WAN type from the following ...

Static IP address: your ISP assigns you a static IP address,

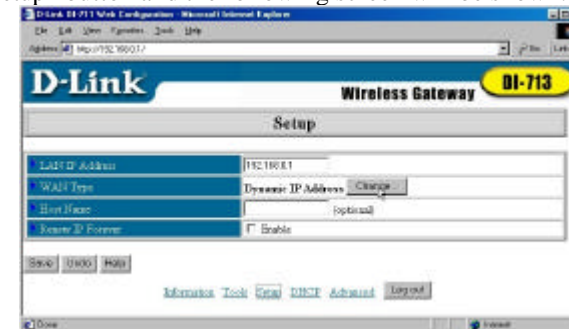
Dynamic IP Address: obtain an IP address from your ISP automatically,
PPP over Ethernet (PPPoE): Skip to Step 5-D,
 and then press the “Save” button.

- Use the settings you recorded in the Settings box (Step 2-G) to input the proper values for the setting items shown on the page. For the meaning of the items, please press the “Help” button or refer to the User’s Manual – Chapter 4.4.
- After all of the items are set, press the “Save” button and reboot the DI-713.

Congratulations! You have now successfully installed your new D-Link DI-713. Execute Internet Explorer or Netscape to access the Internet and test the functionality of the DI-713. If you have any problems, it is recommended you read the User’s Manual to review features and operation instructions. If you cannot access the Internet after you have reviewed all of the settings and made sure that they are correct, contact D-Link technical support at (949) 790-5290 or visit our web site at www.dlink.com on another computer.

5. Configuring the DI-713 with PPPoE

- Launch Netscape or Internet Explorer. You must use Netscape 4.0 or Internet Explorer 4.0 or higher. Type “192.168.0.1” in the “Location” (for Netscape) or “Address” (for IE) field and press ENTER.
- In the “System Password” field, type “admin” and click on the “Log in” button.
- Press the “Setup” button and the following screen will be shown.



- Press the “Change ...” button, select PPPoE over Ethernet, and then press the “Save” button.
- Enter the proper values for the setting items shown on the page. For the meaning of the items, please press the “Help” button or refer to the User’s Manual – Chapter 4.4. After all of the items are set, press the “Save” button and reboot the DI-713.

Congratulations! You have now successfully installed your new D-Link DI-713. Execute Internet Explorer or Netscape to access the Internet and test the functionality of the DI-713. If you have any problems, it is recommended you read the User’s Manual to review features and operation instructions. If you cannot access the Internet after you have reviewed all of the settings and made sure that they are correct, contact D-Link technical support at (949) 790-5290 or visit our web site at www.dlink.com on another computer.