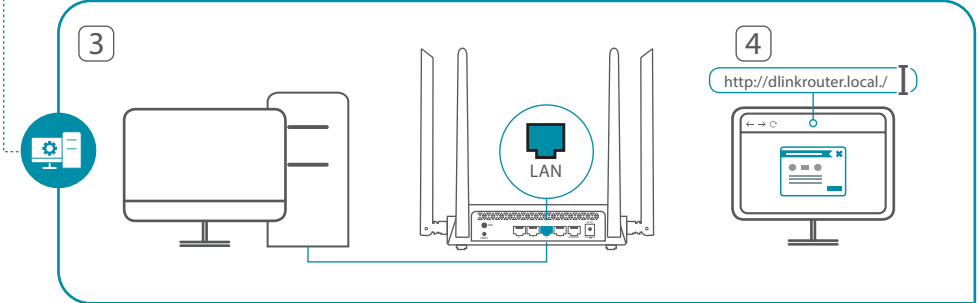
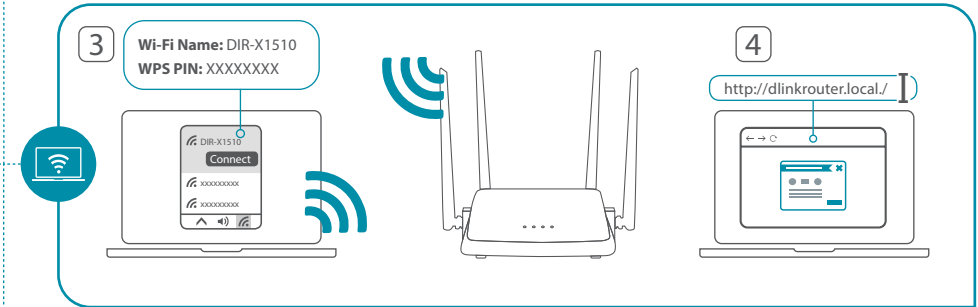
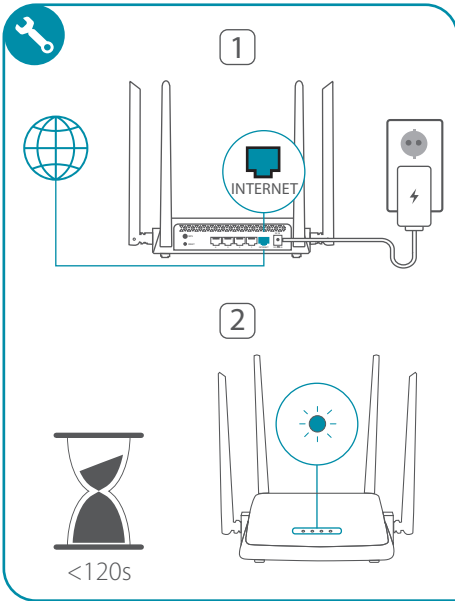
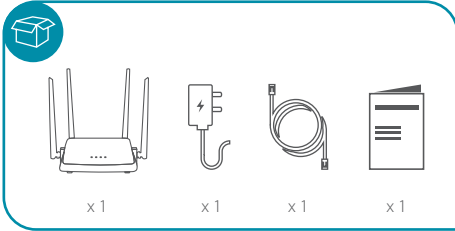


Quick Start Guide

DIR-X1510

AX1500 Wi-Fi 6 Gigabit Router



For more information please follow below

EN



RU



BY



UA



AM



KZ



MD



TR



IL



LT



EE



MN



DIR-X1510

AX1500 Wi-Fi 6 Gigabit Router

Using the DIR-X1510 router, you are able to quickly create a high-speed wireless network at home or in your office.

Features

802.11g/n/ac/ax, 4 antennas 5 dBi
1 WAN and 4 LAN ports 1000Mbps

Manufacturer

D-Link Corporation, №289, Shinhu 3rd Rd., Neihu District,
Taipei City 11494, Taiwan

DIR-X1510

Гигабитный маршрутизатор Wi-Fi 6 AX1500

DIR-X1510 предназначен для построения высокоскоростных сетей Wi-Fi.

Технические характеристики

802.11g/n/ac/ax, 4 антенны 5 дБи
1 порт WAN и 4 порта LAN 1000 Мбит/с

Правила использования

Убедитесь, что устройство не имеет механических повреждений. Для подключения необходима установка легкодоступной розетки вблизи оборудования. Устройство должно быть использовано только по назначению.

Изготовитель

Д-Линк Корпорейшн, 11494, Тайвань, Тайбэй, Нэйху
Дистрикт, Синху 3-Роуд, № 289

Уполномоченный представитель/импортер

ООО «Д-Линк Трейд» 390043, г. Рязань, пр. Шабулина, д. 16
Тел.: +7 (4912) 575-305

Техническая поддержка D-Link

8-800-700-5465

GPL Code Statement

This D-Link product includes software code developed by third parties, including software code subject to the GNU General Public License ("GPL") or GNU Lesser General Public License ("LGPL"). As applicable, the terms of the GPL and LGPL, and information on obtaining access to the GPL code and LGPL code used in this product, are available to view the full GPL Code Statement at:

<https://tsd.dlink.com.tw/GPL>

The GPL code and LGPL code used in this product is distributed WITHOUT ANY WARRANTY and is subject to the copyrights of one or more authors. For details, see the GPL code and the LGPL code for this product and the terms of the GPL and LGPL.

Written Offer for GPL and LGPL Source Code

Where such specific license terms entitle you to the source code of such software, D-Link will provide upon written request via email and/or traditional paper mail the applicable GPL and LGPL source code files via CD-ROM for a nominal cost to cover shipping and media charges as allowed under the GPL and LGPL.

Please direct all inquiries to:

Snail Mail:
Attn: GPL/SOURCE REQUEST
D-Link Systems, Inc.
14420 Myford Road, Suite 100
Irvine, CA 92606

Email:
GPLCODE@dlink.com

D-Link[®]

