



9-Port 10/100 PoE Unmanaged Desktop Switch

Compact Plug-&-Play PoE switch with Gigabit uplink and 6kV surge protection for cost-effective SMB performance

DES-1009MP



Power over Ethernet

Conveniently power connected devices via Ethernet cable



High Power Budget

8 PoE ports delivering up to 117 W total output



Surge Protection

High quality 6kV surge protection on each port to prevent damage



Gigabit Aggregation

1 Gigabit Ethernet port for network uplink



9-Port 10/100 PoE Unmanaged Desktop Switch DES-1009MP

- Up to 30 W power output per port with 117 W total power budget
- 6kV surge protection on every port to shield switch circuitry
- Quickly aggregate 8 Fast Ethernet connections via Gigabit uplink port
- Compact Plug-&-Play desktop switch for effortless network integration

The DES-1009MP is a compact unmanaged 9-port PoE Switch to power your devices such as wireless access points & IP cameras with up to 30 W per port (117 W total PoE budget), and a Gigabit uplink port that allows sufficient bandwidth for uplink connectivity.

The 6kV surge protection on every port neutralizes harmful electrical spikes to protect the switch and the fanless design enables silent operation and improves device reliability.





Power over Ethernet

8 Fast Ethernet ports are PoE-equipped, conveniently supplying up to 30 W of power per port for connected PoE devices with a maximum PoE budget of 117 W, eliminating the need for access to power outlets.

- Power compatible devices with up to 30 W per port
- Easier to deploy network devices



Reliable Protection on Every Port

The DES-1009MP is shielded from unexpected electrical surges such as from lightning strikes with 6kV surge protection, safeguarding your switch from internal circuit damage.

- 6kV surge protection



Gigabit Uplink Port

The Gigabit uplink port provides high data throughput to connect remote networks and can ensure uncongested access to high-bandwidth network devices such as surveillance NVRs.

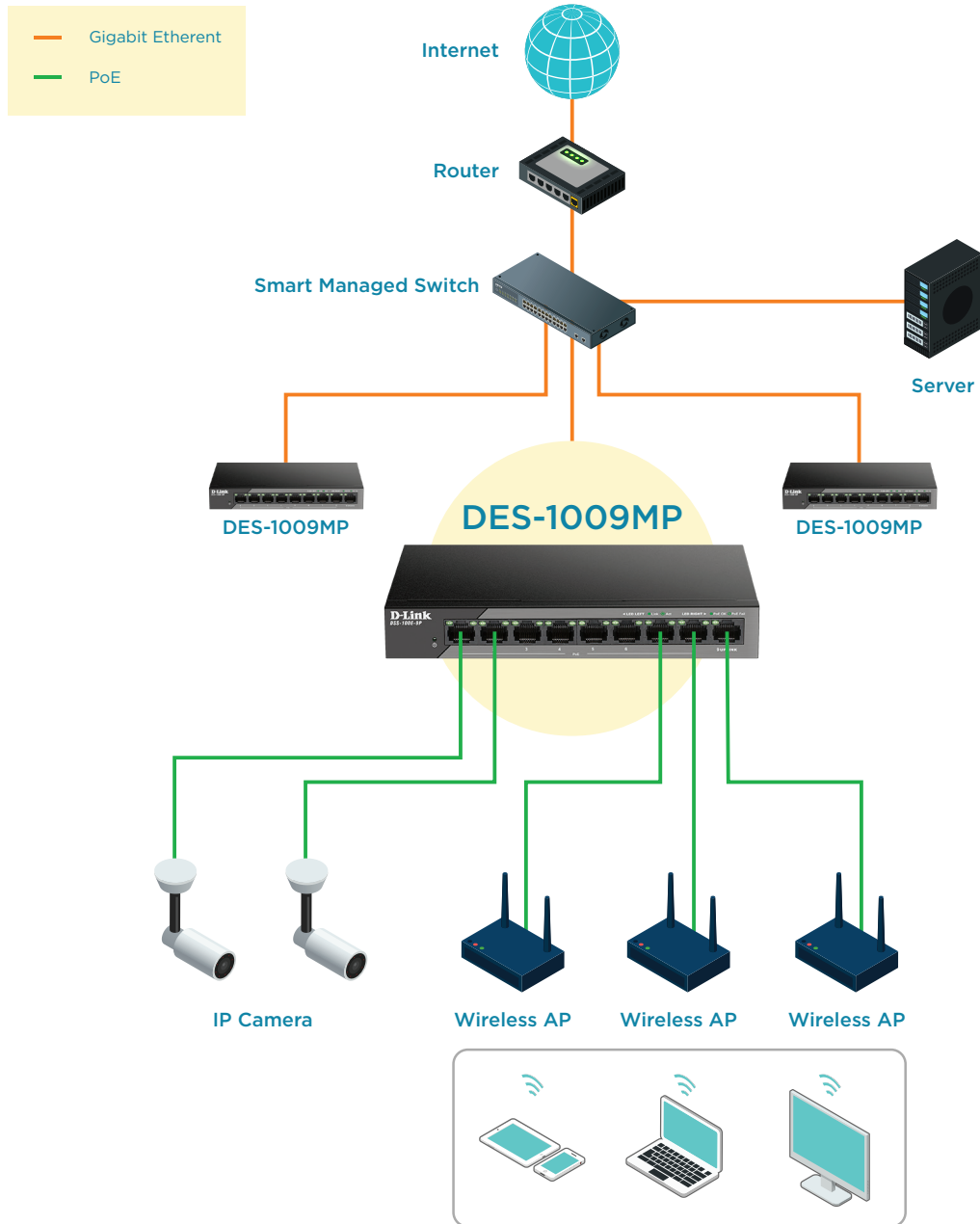
- Gigabit Uplink



Affordable Performance

To streamline network operation, the DES-1009MP is an affordable desktop solution with convenient functionalities such as:

- **Auto-MDI/MDI-X:** eliminates the need for crossover cables
- **Auto-negotiation:** intelligently adjusts to match port speed
- **Diagnostic LEDs:** display port status and activity
- **Store-and-Forwarding:** minimizes data transmission errors
- **Fanless Design:** enhanced heat dissipation for silent operation
- **Plug-&-Play:** fast configuration-free deployment



Technical Specifications

/ DES-1009MP

General

Hardware Version	A1
Interfaces	8 x 10/100 Mbps Ethernet ports 1 x 10/100/1000 Mbps Ethernet port
Standards	IEEE 802.3 10BASE-T Ethernet (twisted-pair copper) IEEE 802.3u 100BASE-TX Fast Ethernet (twisted-pair copper) IEEE 802.3ab Gigabit Ethernet IEEE 802.3x Flow Control Support
Media Interface Exchange	Auto MDI/MDIX adjustment for all ports
LEDs	Link/Activity (per port) Power (per device) PoE Status (ports 1-8)

Functionality

Port Packet Filtering/ Forwarding Rate	14,880 pps for 10 M 148,800 pps for 100 M 1,488,000 pps for 1000 M
Switching Fabric	3.6 Gbps
Transmission Method	Store-and-Forward
MAC Address Table	2K entries per device
PoE Power Budget	117 W

Physical

Dimensions	177 x 104 x 26 mm (7.0 x 4.1 x 1.0 in)
Weight	0.396 kgs (0.87)
Power Consumption	Minimum AC input: 10 watts Maximum AC input: 127 watts
Heat Dissipation	433.34 BTU/h
Surge Protection	Ethernet Ports: 6kV Power Input: 4kV
Operating Temperature	0 to 40 °C (32 to 104 °F)
Storage Temperature	-40 to 70 °C (-40 to 158 °F)
Operating Humidity	0% to 95% non-condensing
Storage Humidity	0% to 95% non-condensing
Certifications	CE Class A, LVD

Order Information

/ DES-1009MP

DES-1009MP 9-Port 10/100 PoE Unmanaged Desktop Switch