

DGS-3208F

Gigabit Ethernet Switch



The D-Link DGS-3208F is a 8-port high performance Gigabit Ethernet Switch that strictly adheres to the IEEE 802.3z standard specifications.

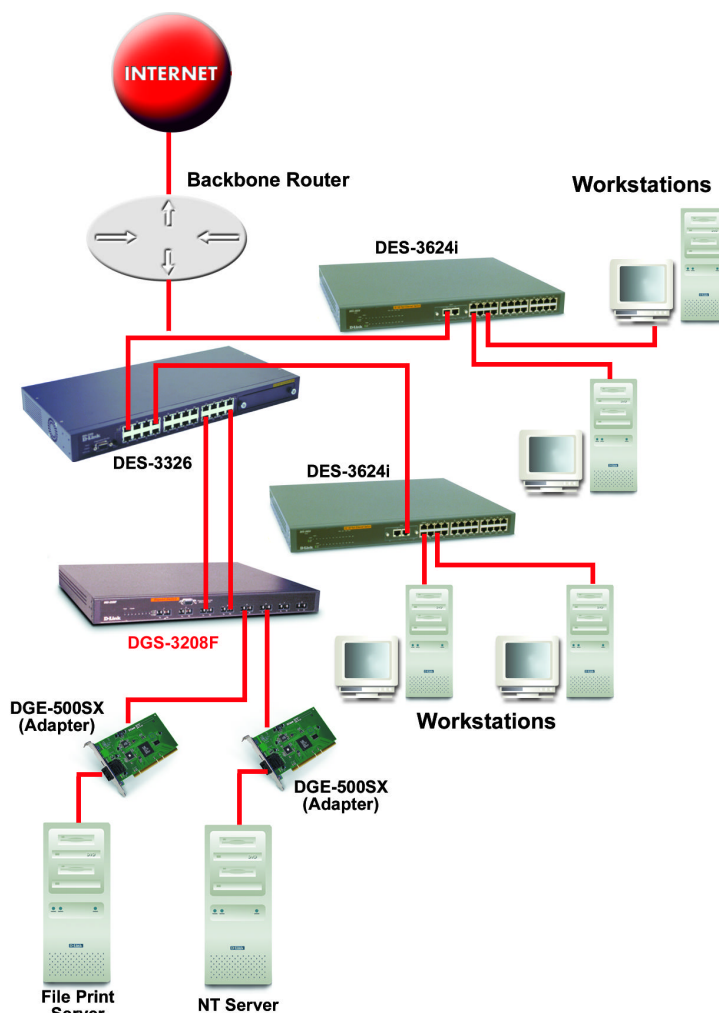
8-port High Performance Gigabit Ethernet Switch that Functions as an Excellent Exit Switch to the Backbone Network

The D-Link DGS-3208F is a 8-port high performance Gigabit Ethernet Switch that strictly adheres to the IEEE 802.3z standard specifications. A layer 2 switch the DGS-3208F functions as an excellent exit switch to the backbone network.

The D-Link DGS-3208F uses fast store and forward architecture to ensure low latency and high data integrity.

The DGS-3208F will fit into any enterprise level network to act as an exit to the backbone switch that can handle throughput speeds up to 2000 Mbps (in full duplex) and will provide enough bandwidth to supply multiple network segments.

The DGS-3208F also allows for dynamic filtering through auto-learned MAC addresses and static filtering, which permits the administrator to implement increased network security and to allow for explicit packet forwarding. The DGS-3208F's built in broadcast storm protection gives administrators the option to either forward or discard multicast packets on all network segments or specific segments. Broadcast storm protection can control broadcast data and prevent unnecessary absorption of network bandwidth to keep the networks speed constant.



The D-Link DGS-3208F uses fast store and forward architecture to ensure low latency and high data integrity.

DGS-3208F

Gigabit Ethernet Switch

Technical Specifications	
Standards	<ul style="list-style-type: none"> ● IEEE 802.3z ● ISO/IEC 793-2 type B1 ● ITU-T G.652
Protocols	CSMA/CD
Transfer Rates	<ul style="list-style-type: none"> ● 1000 Mbps - Half Duplex ● 2000 Mbps - Half Duplex
Transmission Method	Store and Forward
Ports	<ul style="list-style-type: none"> ● 8 SC Type ● 8 Transmit & 8 Receive
Cabling	<ul style="list-style-type: none"> ● 1000Base-SX Multimode Cable ● ISO/IEC 793-2 type B1 ● ITU-T G.652
Topology	Star
LEDs	<ul style="list-style-type: none"> ● Per Unit: ● Power ● Utilization %
Per Port	<ul style="list-style-type: none"> ● Full/Half Duplex ● Link/Activity ● Speed
Filtering Address Table	12K MAC Address
MAC Address Table	<ul style="list-style-type: none"> ● Dynamic Entries: Auto-learned ● Max Age: Default 300 Seconds
Power Consumption	40 Watts Max
Dimensions	441 x 207 x 44 mm 19 inch Rack Mount Width
Temperature	<ul style="list-style-type: none"> ● Operating: 0 - 50 C ● Storage: -20 - 60 C
Compliances	<ul style="list-style-type: none"> ● FCC Class A ● CE Mark Class A ● VCCI Class A