



DSA-3110 Hotspot Edition

Access concentrator

The DSA-3110 HotSpot Edition manages intelligent AAA (authentication, authorization and accounting) for all wired and wireless network users. This security device coordinates ISO Layer 2, 3, 4 operations to provide your network with comprehensive functions, including IP plug and play, station isolation, traffic management and accounting, and network policy enforcement.

Quick organization public access to Internet (Hotspot)

The hotspot service gateway provides comfortable and secure way to provide access to Internet for your clients or/and employees. The system guarantees that only registered users are able to use network resources. Use HTTPS (secure http) connection technologies provide a security way of user's authorization.

AAA Function Execution

The DSA-3110 performs for you authentication, authorization and accounting (AAA), three basic issues that are encountered frequently in many network services. Authentication acts to verify an identity so authorization can be granted to access a resource. Accounting collects resource consumption data for the purposes of trend analysis, and capacity planning, billing, auditing, and cost allocation.

Can Be Used on Commercial Hotspot

The DSA-3110 Hotspot Edition can also be installed in a commercial network providing access to Internet. Supporting time-based and traffic-based service plans allow you do flexible services for your clients.

Using DSA-3110 Hotspot Edition with recommended printer allow you reduce total cost of ownership (TCO) and organize servicing commercial hotspot using low qualification employees.

Can Be Used on SOHO and SMB Business

The DSA-3110 Hotspot Edition can also be installed in a business network for traffic controlling. Supporting quotas allow set quota (maximum amount of Internet traffic) for each of your users (employees).

Features

- 7 10/100Mbps Fast Ethernet ports
- 4 independently configurable ports
- Manages up to 250 user account data with internal user account database
- Supports up to 50 Concurrent on-line users
- ID/Password based authentication and authorization
- Time-based and traffic-based access
- Quoting
- Traffic shaping
- Local User Database
- RADIUS (AAA)
- Customizable User Login Page
- Guest Account Access
- Free Surfing Zone
- Hardware compatibility with VPN concentrator DSA-3110(device convert to Service Hotspot gateway using update firmware)**
- Open base Linux OS
- CLI (command line of Linux OS)

Hotspot Service gateway

- Built-in vi and nano editor
- Support WEB-based management, SSH, Telnet, console connection
- Multiple options of Linux kernel

Provided functions

Manages up to 250 user accounts with internal user account database

Supports up to 50 Concurrent on-line users

Connection protocol: HTTP or secure HTTP (HTTPS)

ID/Password based authentication and authorization

Management interface access

Console mode administration interface via SSH

NAT support

Static IP, DHCP client on ports

Support receipt editor (only if DSA-3110 Hotspot edition used with recommended printer)

Hardware

CPU

Intel IXP-425

Memory

SDRAM 64 MB

Flash 16 Mb

Ports

- 7 10/100Mbps Fast Ethernet ports
- 4 independently configurable ports (preconfigured as 2-WAN, 1-Private LAN, 1-Public LAN)

LED Indicators

- Power
- Status
- Fast Ethernet ports 1 - 7 LEDs

Physical & Environmental

Power Supply

External

Power Input

DC 5V/3A

Dimension

239 x 156 x 30 mm

Weight

1.2 kg

Chassis material

Steel

Operations temperature

0°-40° C

Storage temperature

-20°-70° C

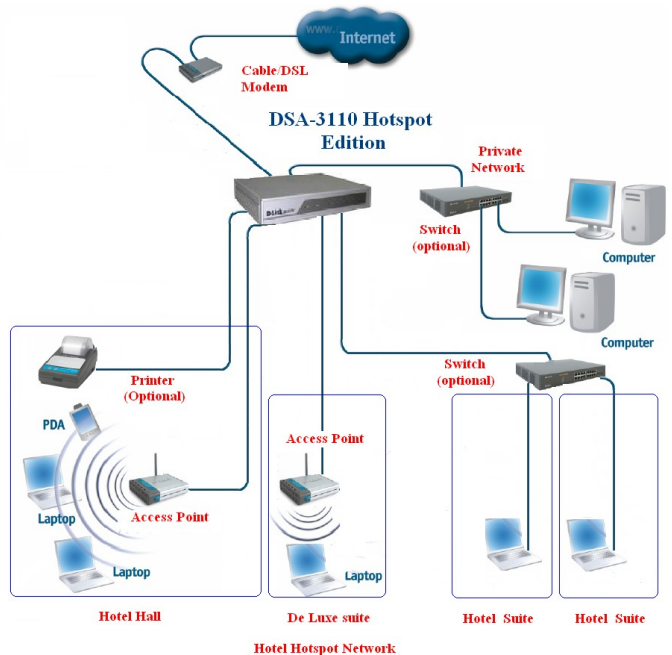
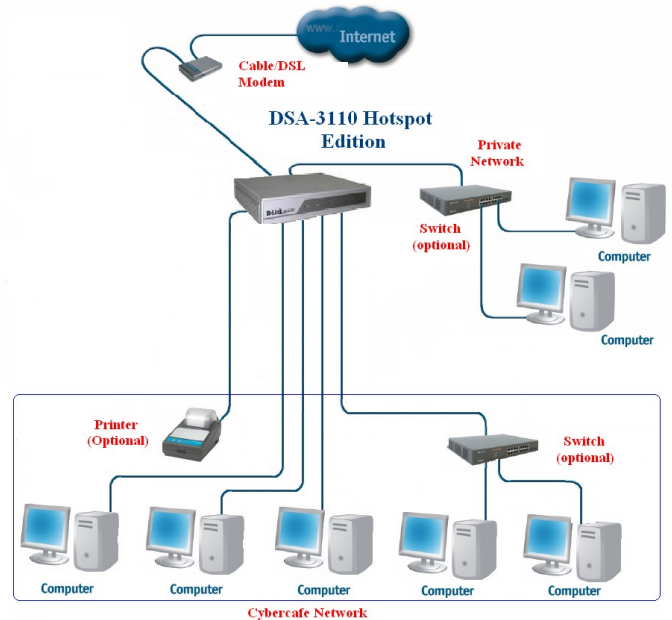
Humidity

5%-95% non-condensing

EMI

- CE
- FCC Class A

Example of using DSA-3110 HotSpot Edition in Cyber-cafe network



Example of using DSA-3110 HotSpot Edition in hotel network

Ordering Information

DSA-3110 Access concentrator

D-Link

129626, Russia, Moscow, Graphskiy per, 14

Tel./Fax +7 (495) 744-0099

E-mail: mail@dlink.ru

Web: www.dlink.ru