

# Contents

Package Contents -----	1
Introduction -----	1
Getting To Know Your USB 2.0 MPEG Encoder TV Tuner -----	2
Features and Benefits -----	2
Recording Video to a Recordable Disc -----	3
Reference Table-----	3
Tutorial I (Schedule a Recording) -----	4
Tutorial II (Time-Shifting) -----	6
Tutorial III (Quality-Oriented)-----	8
Step 1: Record Videos -----	8
Step 2: Convert Recorder Files -----	10
Step 3: Make a DVD/SVCD/VCD/DATA CD-----	13
Tutorial VI (Time-Savings Solution)-----	16
Step 1: Record and Convert Videos -----	16
Step 2: Make a VCD -----	18

## Package Contents



### Contents of Package

- D-Link DUB-T200 USB 2.0 MPEG Encoder TV Tuner
- Power Adapter
- USB 2.0 Cable
- 3-in-1 AV Cable
- Driver/Video Editing Software on CD
- Quick Installation Guide

If any of the above items are missing, please contact your reseller.

### System Requirements

- Pentium III 550MHz or Above (PIII 1 GHz Recommended)
- Microsoft Windows XP, 2000, Me, 98SE
- One Available USB Port (USB 2.0 Recommended)
- VGA Card with 16MB RAM
- 128MB RAM or Above
- CD-R/W or DVD-R/W (For DVD、SVCD、VCD)

### Introduction

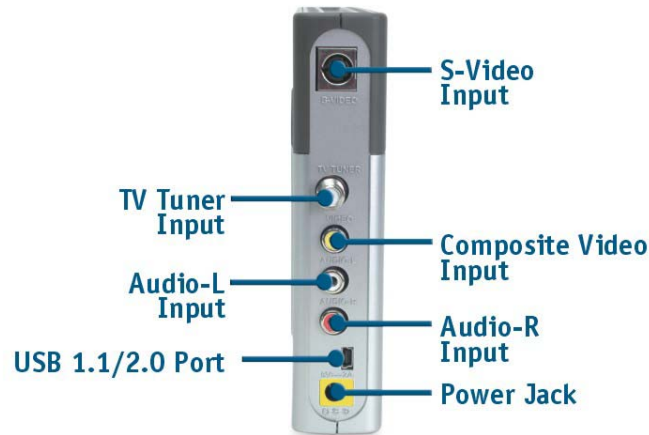
The D-Link DUB-T200 is an advanced video-capture and TV Tuner which provides you with a “high quality PC Theater” solution. The D-Link DUB-T200 allows you to capture 30 frames per second (fps) while giving you up to 704x480 resolution for a high quality video image on a PC or notebook using USB2.0. The DUB-T200 captures CD quality stereo audio with a 16 bit, 24KHz sampling rate and provides audio/video synchronization. The “snapshot” function

lets you catch 704x480 still images from your video source.

With the user-friendly program, **TV Plus**, you can easily transfer the captured audio/video bit stream into other standard formats such as AVI, MPEG4, VCD and DVD.

Please read the information below which is aimed to assist you in using the **TV Plus** software with your **DUB-T200 MPEG Encoder TV Tuner**

## Getting To Know Your USB 2.0 MPEG Encoder TV Tuner



## Features and Benefits

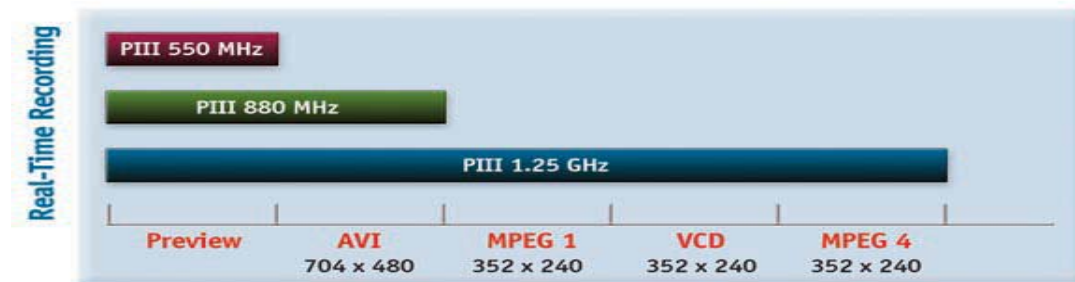
- Full TV Function CATV/VHF/UHF
- Full Channel/Auto-Scan Function
- DVD Quality (704x480 – NTSC 、 704x576 – PAL)
- SVCD Quality (480x480 – NTSC 、 480x576 – PAL)
- VCD Quality (352x240 – NTSC 、 352x288 – PAL)
- Time-Shifting Recording
- Real-Time MPEG Compression
- Professional Snap-Shot 704x480 Still Image Capture
- Analog to digital Video Conversion
- Pre-schedule a Recording Appointment of Your Favorite Show
- Audio Capture & A/V Sync. Function
- Saturation/Contrast/Hue/Brightness Adjustment
- Create MPEG Movies
- Direct Burn-to-Disc of Recorded MPEG1/2 with CD/DVD Burner
- Video Editing Software Include

## Recording Video to a Recordable Disc

In the following four tutorials, you will be guided to experience the great amusement that DUB-T200 will bring. Through presenting the workflows of scheduling an appointment of recording, undergoing the convenience of time-shifting function, and burning captured video files to a compact disc, we wish you to realize that your DUB-T200 brings more than the entertainment of a digital TV.

**TUTORIAL I** aims to show you how to schedule the attached TV Plus to record your favorite shows. In **TUTORIAL II**, you will learn how to replay a show without interrupting a recording session. **TUTORIAL III** illustrates a typical 3-step process of recording video parade on your disc, and **TUTORIAL VI** presents a 2-step operation of making a VCD.

Please refer to the preferred topics to learn more about this versatile DUB-T200.




# Tutorial I (Schedule a Recording)

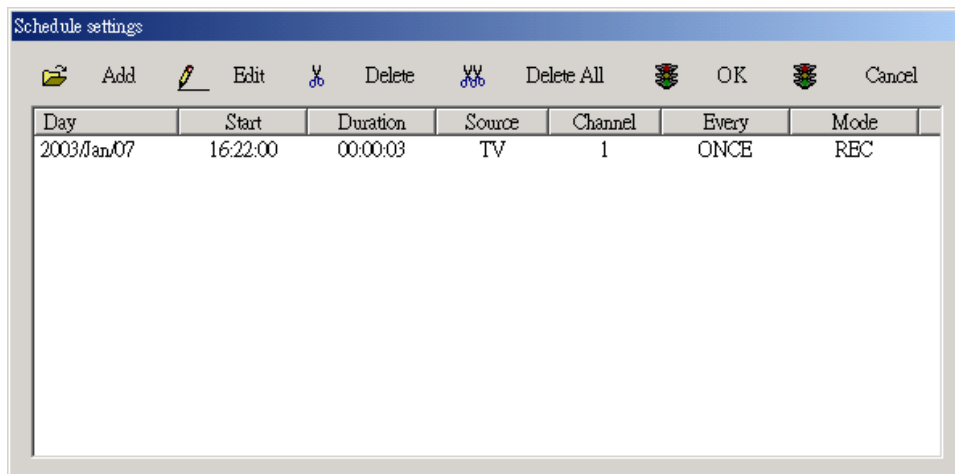
Tutorial I will guide you how to record a TV program or set TV Plus as a reminder of an upcoming program. This feature can be set for a one-time or a reoccurring session. Please follow the procedures below to pre-schedule a task of recording or reminding.

1. Double-click **TVR** on the application bar of your TV Plus's interface to launch **TVR**.



2. From the navigation panel below the preview window, click the **Schedule** button, , to open the **Schedule settings** dialog box as shown below.

**Tips:** You may also invoke the dialog box by choosing **Schedule View** from the menu while right-clicking the TV Plus tray icon.



**Note:** To edit any existing items listing in the dialog box, click over the desired item and then choose **Edit** to open the **Schedule-Add** dialog box, in which you may redefine the former settings. Please refer to the following descriptions to obtain more details about the dialog box.

3. Click **Add** to invoke the **Schedule-Add** dialog box, in which you may add a new appointment to the list.


- i. Define the intended input video source as **TV**, **Cable**, **Composite**, or **S-Video** in the **Input Source** field.
  - ii. Define the desired channel in the **Channel** field if you just set **TV** or **Cable** for the input source. Then in the **Every** field, assign the recording frequency from the provides options: **Once**, **Day**, or **Week**.
  - iii. In the **Mode** field, select **Rec** as the display mode. The recorded video files will be saved to your system. On the other hand, if you choose **View**, the specified TV program or videos will automatically displayed at the precise moment.
  - iv. In the **Start Time** and **How long** fields, precisely set the recoding date and the duration of the program or video to be recorded.
4. Click **Add** to add the settings to the schedule and return to the **Schedule settings** dialog box. The new appointment has been displayed in the list.
  5. Click **OK**. Now you have successfully set a task of recording or reminding you of your favorite program.

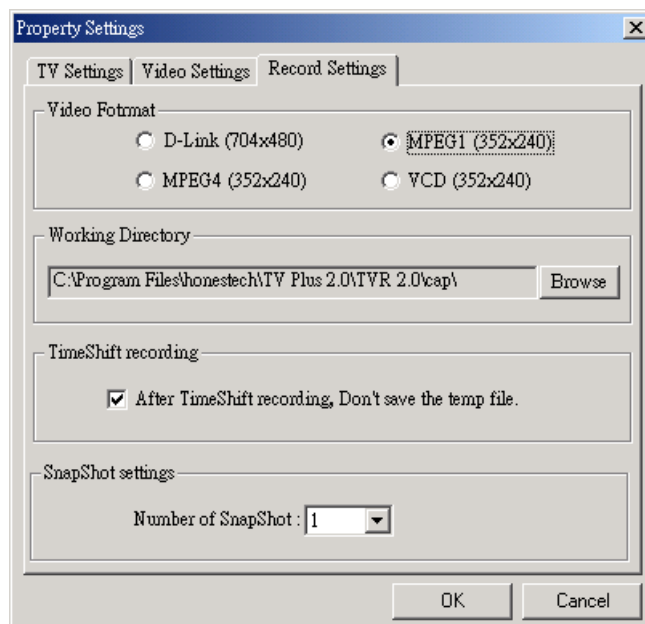
## Tutorial II (Time-shifting)

The **Time shift** feature is similar to live TV replay in regards to the instant replay capability, but may only be used to video content. Whiling watching a live show, you may wish to take a break sometimes. In order not to miss any moment of the show when you are away, operate this feature to pick up where you left off or instantly jump back to live view.

1. Double-click **TVR** on the application bar of your TV Plus's interface to launch **TVR**.






2. From the navigation panel below the preview window, indicate the input video source to acquire the video.
3. Choose **Property Settings**, , from the navigation panel to open the **Property Settings** dialog box, and then click the **Record Settings** tab.



4. In the **TimeShift recording** field, choose the **After Timeshift recording, don't save the temp file** command to use the **Time Shift** feature without recording the complete program. Otherwise, leave the option unchecked to record the program in real time while operating the **Time Shift** feature.

**Note:** The recorded video files will be saved in MPEG 1 format to the directory listed in the **Working Directory** field. To change the name of a recorded file, open Windows Explorer to edit a new name for the file.

5. During watching a program or a video, while you intend to operate the **Time Shift** feature, click **Time shift**, , to record the current display video file simultaneously. The buffering window will automatically appear.
6. To jump to a specific time in a recorded video after clicking **Time Shift**, click over the **Time Shift** bar, , right below the preview window, or click on the left end of the bar to playback the video where you just left off.
7. If you wish to catch up to the live mode, simply click .



## Tutorial III (Quality-Oriented)

This tutorial condenses a complex task of making a CD of your own into the following typical three-step workflow via TV Plus.

1. Recording video clips via **TVR**
2. Converting recorded files via **MPEG Encoder**
3. Making a CD via **DVD Maker**

Simply follow the sequence of these three applications on the application bar on the TV Plus interface, and you can quickly create your own CD.

### Step 1: Record Videos


The process of capturing video from the input video source is outlined as below:

- a) Launch **TVR**.
- b) Choose **Property Settings** to set more advanced configuration for recording.
- c) Select an input source.
- d) Click the **REC** button to start recording and click it again to stop.
- e) The captured video clips have been recorded to your system.

Now, please go along with the step-by-step instructions below to start recording:

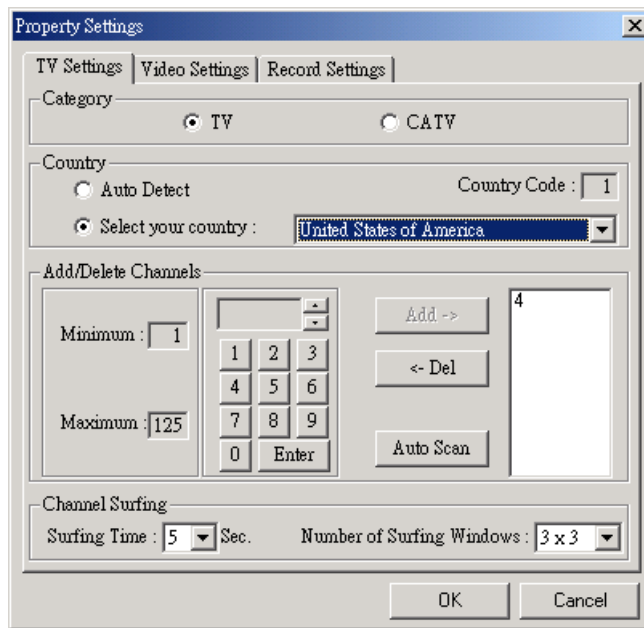
1. Double-click **TVR** on the application bar of your TV Plus's interface to launch **TVR**.



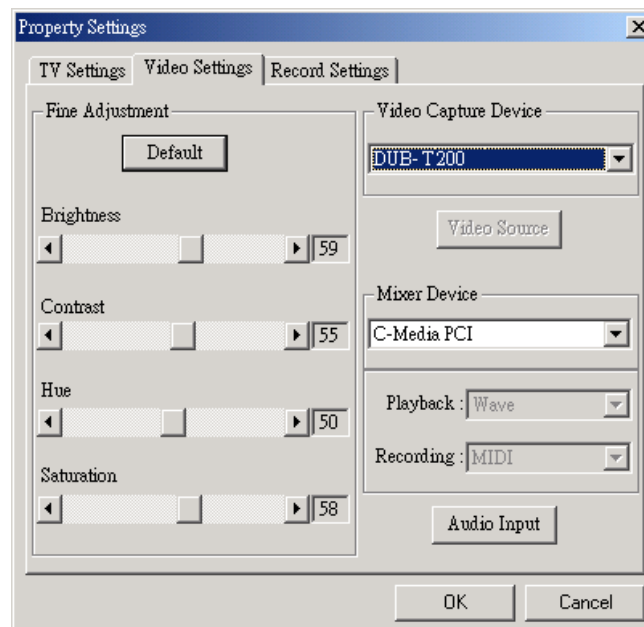
2. Choose **Property Settings**, , from the navigation panel to open the **Property Settings** dialog box, in which you may configure more settings about recording.
3. If you intend to record files from TV or cable TV, the **TV Settings** tab helps you customize and configure your TV channels.
  - i. Under **Category**, choose **TV** or **CATV** for the TV type.
  - ii. In the **Country** field, select **Auto Detect** to display the **Country Code** beside, or choose **Select your country** to manually define correct country from the

drop-down list.

- iii. Click the **Auto Scan** button under **Add/Delete Channels** to automatically display channels available.

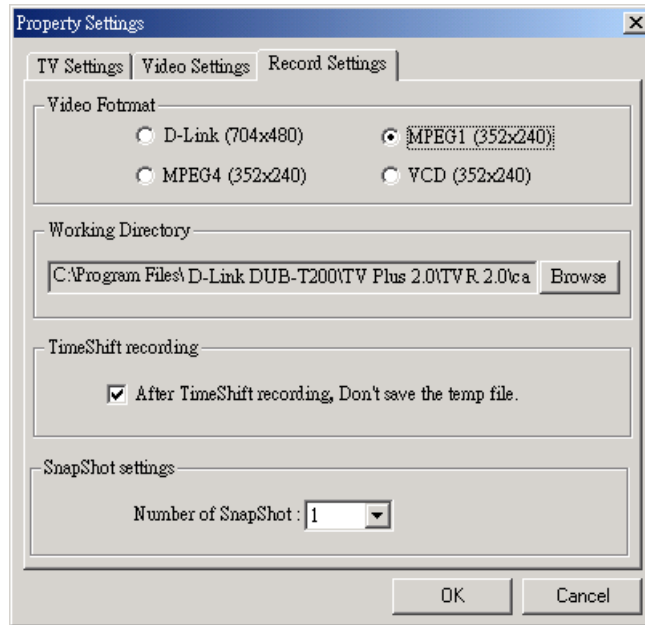



4. On the **Video Settings** tab, drag the **Brightness**, **Contrast**, **Hue**, and **Saturation** sliders in the **Fine Adjustment** field to make adjustments of video image. You may choose **Default** if you don't intend to adjust the values manually.



5. Click the **Recording Settings** tab to make the following configuration.
  - i. Define the video format as **D-Link (704x480)**, **MPEG1 (352x240)**, **MPEG4 (352x240)**, or **VCD (352x240)** for the recorded video clips according to your need. You may convert the recorded file into other file format via the assistance of **MPEG Encoder** afterwards.

- ii. Go on indicating the location where the recorded video clips will be saved by clicking **Browse** in the **Working Directory** field. In the opened **Change Folder** dialog box, specify the intended directory and then click **OK** to save the file.
- iii. Then click **OK** to activate all the settings and close the **Property Settings** dialog box.



6. Select input source as **TV**, **Cable**, **Composite**, or **S-Video** on the left side of the navigation panel.
7. Press  to start recording and press it again to stop recording. You can find the recorded file has been added to the system from the **Video Folder** window right after stopping the recording.

## Step 2: Convert Recorded Files

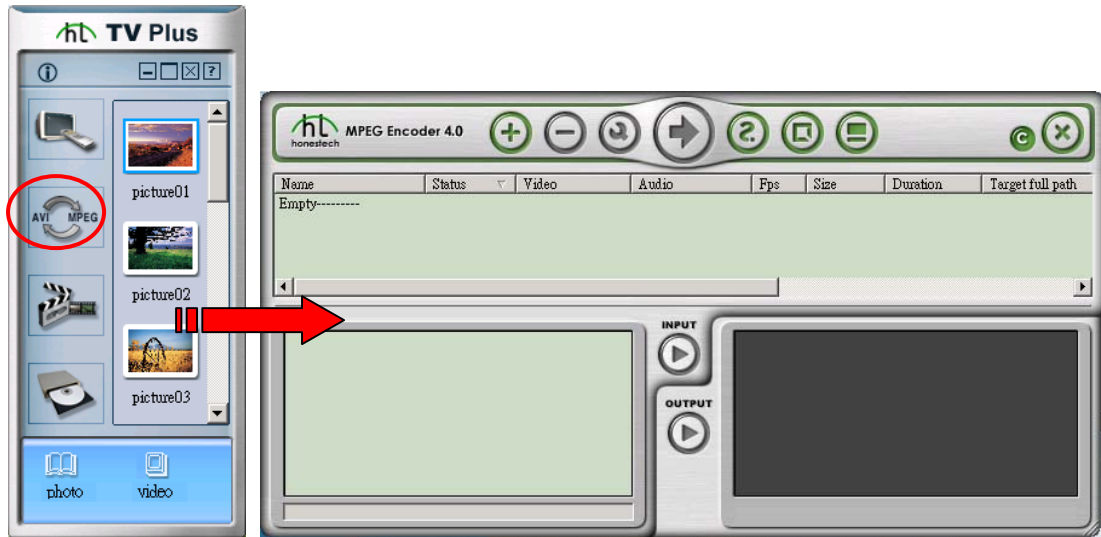
The recorded video clips will need to be converted into specific video formats to be appropriately played, and **MPEG Encoder** aims to assist you in the operation of converting these video files into MPEG-1 or MPEG-2 files.


Check the following guided tour first before you begin the conversion with **MPEG Encoder**.

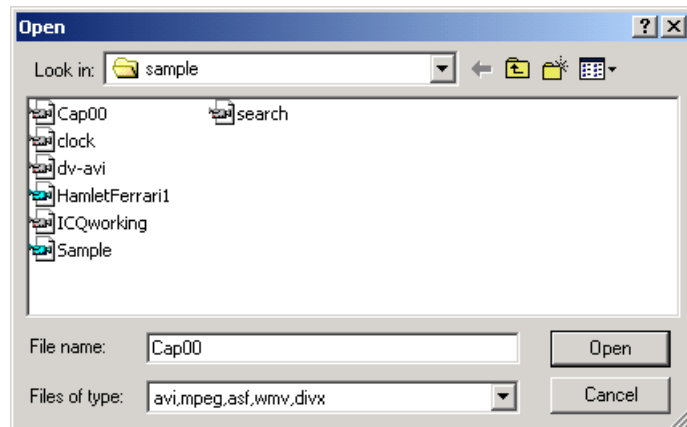
- a) Launch **MPEG Encoder**.
- b) Input the video files you intend to encode.
- c) Specify the desired file format.
- d) Convert the input files.

Here are the thorough procedures for converting your video files.

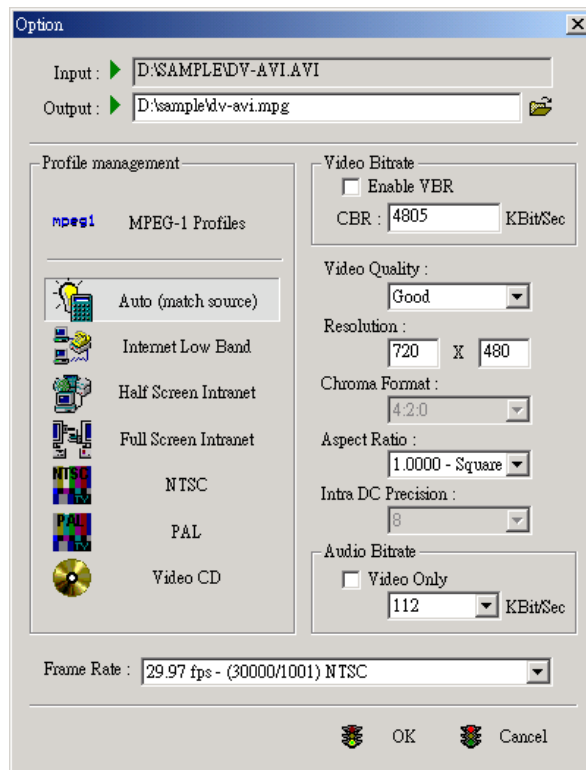
1. Double-click **MPEG Encoder** on the application bar of your TV Plus's interface to launch **MPEG Encoder**.



2. Choose the **Add** button, , on the **MPEG Encoder** interface to open the **Open** window, from which you may indicate the path and the files you want to acquire to encode. Click **Open** when you are done.

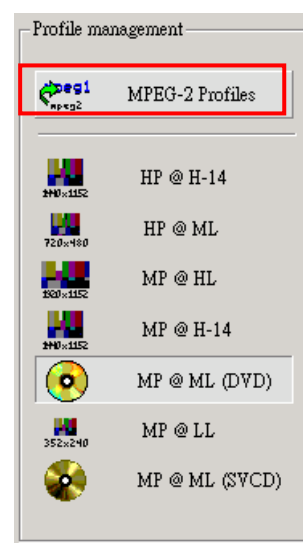
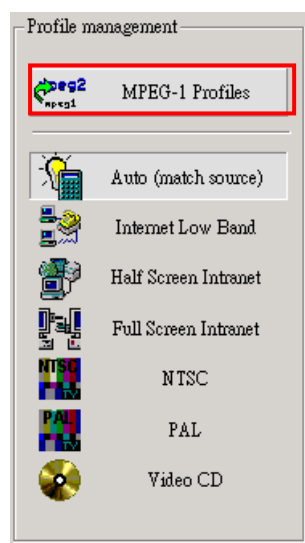


3. After choosing the **Open** button in the **Open** window, the **Option** dialog box will be invoked as the following picture displayed.



In the **Input** field presents the chosen video file name. Click the folder icon on the right of the **Output** field to set a location where the converted file will be stored later. To change the file name for the encoded file, directly edit a new name in the **Output** box, or leave it by default.



4. In the **Profile management** pane, define the target file format as **MPEG-1 Profiles** or **MPEG-2 Profiles** for the chosen video file. Then click one option from the submenu of the preferred profile item. The pictures below illustrate the differences between the submenus of both profiles.



The list below provides you general information on corresponding relationships between a specified profile and a type of disc.

<b>VCD</b> (Video Compact Disc)	For MPEG-1 video of good quality that you can play on your VCD or DVD player.
<b>DVD</b> (Digital Versatile Disc)	For MPEG-2 video of superior quality that you can play on your DVD player.
<b>SVCD</b> (Super Video Compact Disc)	For MPEG-2 video of superior quality that you can play on your VCD or DVD player.

- It is noted that some states of other commands on the right pane of the **Option** dialog box would vary according to the preference you make in the **Profile management** pane. However, you still can define these features according to your special needs.
- Before click **OK** to activate these settings, make sure the state of **Frame Rate** is **29.97fps –(30000/1001) NTSC**.
- The chosen file has been displayed in the upper pane of the **MPEG Encoder**'s interface.

Click the item, and then choose the **Encoding** button, , to start converting the file into desired file format. Meanwhile, the **Encoding** button becomes the **Stop** button, . During the process of encoding, you may choose the **Stop** button if there's a need to terminate the task.

- When the **Status** column in the upper pane displays **Done**, the process of encoding is complete.

### Step 3: Make a DVD/VCD/SVCD/DATA CD

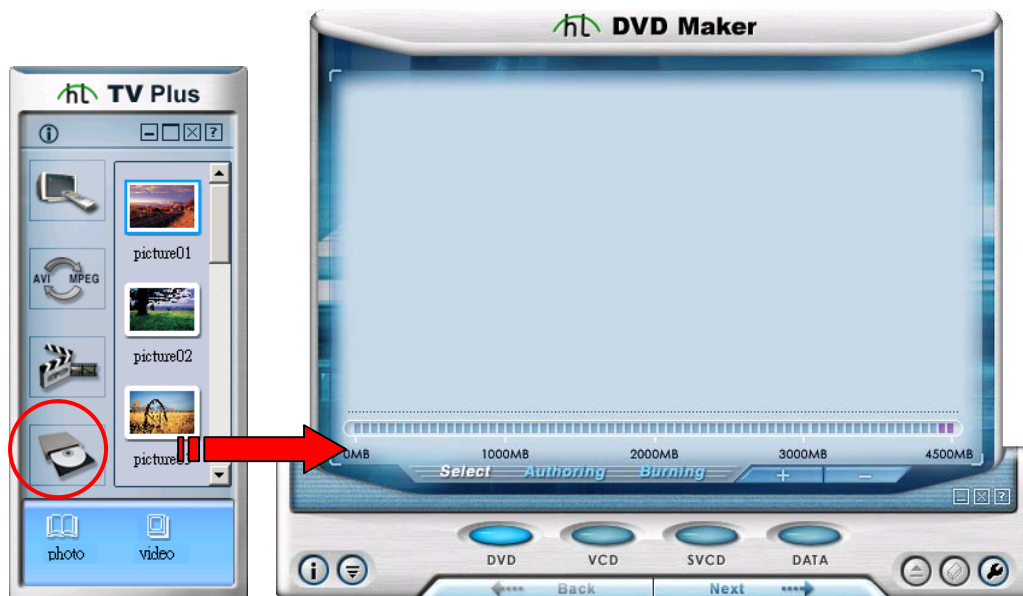
The last step is to burn your encoded material to a disc. However, before starting burning, if you wish to have your prepared video clips edited, launch **MPEG Editor** on the application bar to set more advanced configuration.

Here's a quick look at a typical disc burning session:

- Launch **DVD Maker**.
- Define a disc format.
- Add video files.
- Burn the videos to the disc.





Now please refer to the following descriptions for detailed preferences.

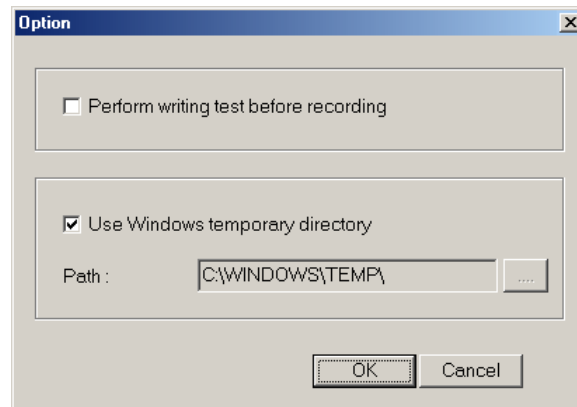
- Double-click **DVD Maker** on the application bar of your TV Plus's interface to launch **DVD Maker**.



2. Specify a disc type by clicking the **DVD**, **VCD**, **SVCD**, or **DATA** icon below the thumbnail window.





3. Click  to open the **Open** window. From the window, choose the desired video files and then click **Open** to add them to the thumbnail window.
4. When you have gathered all the intended video items, select  to proceed.
5. If necessary, select  to open the following dialog box, in which you may make more advanced settings for the burning session.
  - i. Choose the **Perform writing test before recording** command to check if the data is acceptable before actual burning.
  - ii. You may specify a location for having the source files saved on the hard disk first by clicking ; otherwise, check **Use Windows temporary directory** to store the files in the defaulted location.
  - iii. When done, click **OK** to continue.



6. Select your burner/recorder from the **Drive** list box.



7. Choose the **Eject** button, , to insert a blank recordable disc into the recorder.
8. Click  to begin burning your CD. When the process of burning is finished, the burnt disc will be ejected.



## Tutorial VI (Time-Savings Solution)

Tutorial VI will guide you through a 2-step task of making a VCD of your own. You will find creating a VCD becomes easier and faster than ever. Without converting the recorded video files via **MPEG Encoder**, you may directly convert the video clips while recording them. The two-step workflow is listed below.

1. Recording and converting video clips via **TVR**
2. Making a VCD via **DVD Maker**

Please read the following instructions thoroughly to undergo the efficiency and amazements you've never experienced.

### Step 1: Record and Convert Videos


The process of capturing and converting video from the input video source is outlined as below:

- a) Launch **TVR**.
- b) Choose **Property Settings** to make settings for recording and converting.
- c) Select an input source.
- d) Click the **REC** button to start recording and click it again to stop.
- e) The captured video clips have been recorded to your system.

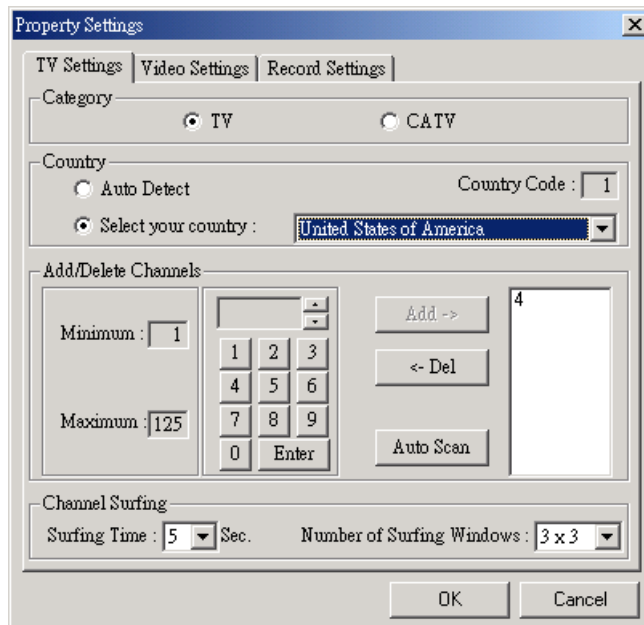
Now, please follow the step-by-step instructions below to start recording:

1. Double-click **TVR** on the application bar of your TV Plus's interface to launch **TVR**.

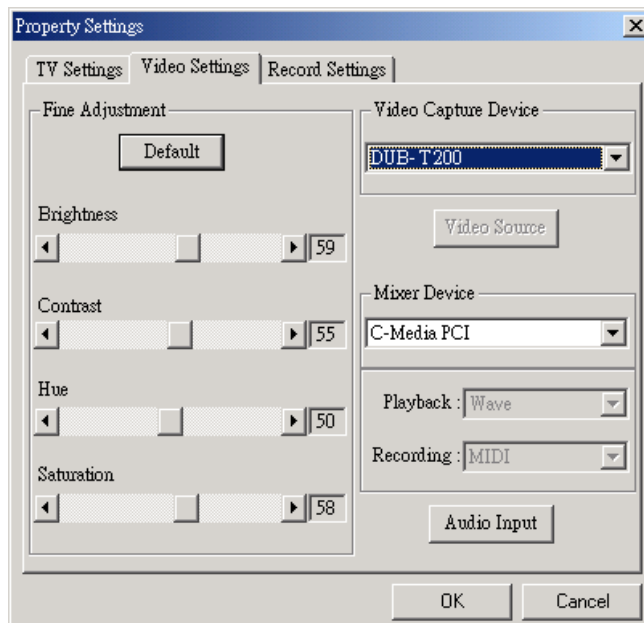


2. Choose **Property Settings**, , from the navigation panel to open the **Property Settings** dialog box.
3. If you intend to record files from TV or cable TV, the **TV Settings** tab helps you customize and configure your TV channels.
  - i. Under **Category**, choose **TV** or **CATV** for the TV type.

- ii. In the **Country** field, select **Auto Detect** to display the **Country Code** beside, or choose **Select your country** to manually define correct country from the drop-down list.
- iii. Click the **Auto Scan** button under **Add/Delete Channels** to automatically display channels available.



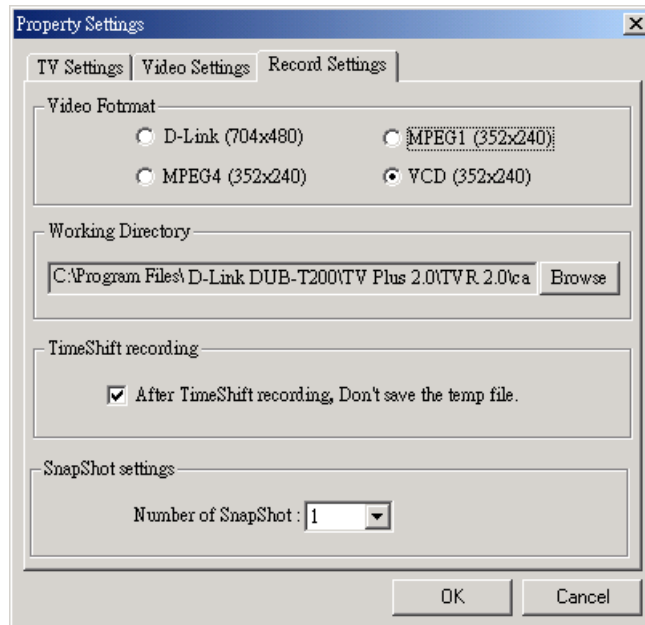
4. On the **Video Settings** tab of the **Property Settings** dialog box, manually drag the **Brightness**, **Contrast**, **Hue**, and **Saturation** sliders in the **Fine Adjustment** field to make adjustments of video image, or you may choose **Default**.




5. Click the **Recording Settings** tab to make the following configuration.
  - i. In the **Video Format** field, indicate the target video format of recorded video clips as **VCD (352x240)**. The recorded video files will then be saved in the

VCD format.

- ii. Click **Browse** in the **Working Directory** field to specify a location to save the recorded video clips. In the opened **Change Folder** dialog box, select the intended directory and then click **OK**.
- iii. Then click **OK** to activate the new settings and leave the **Property Settings** dialog box.



6. Select input source as **TV**, **Cable**, **Composite**, or **S-Video** on the left side of the navigation panel.
7. Press  to start recording and press it again to stop recording. Within a few seconds, you can find the recorded file has been displayed in the **Video Folder** window right after stopping recording.

## Step 2: Make a VCD

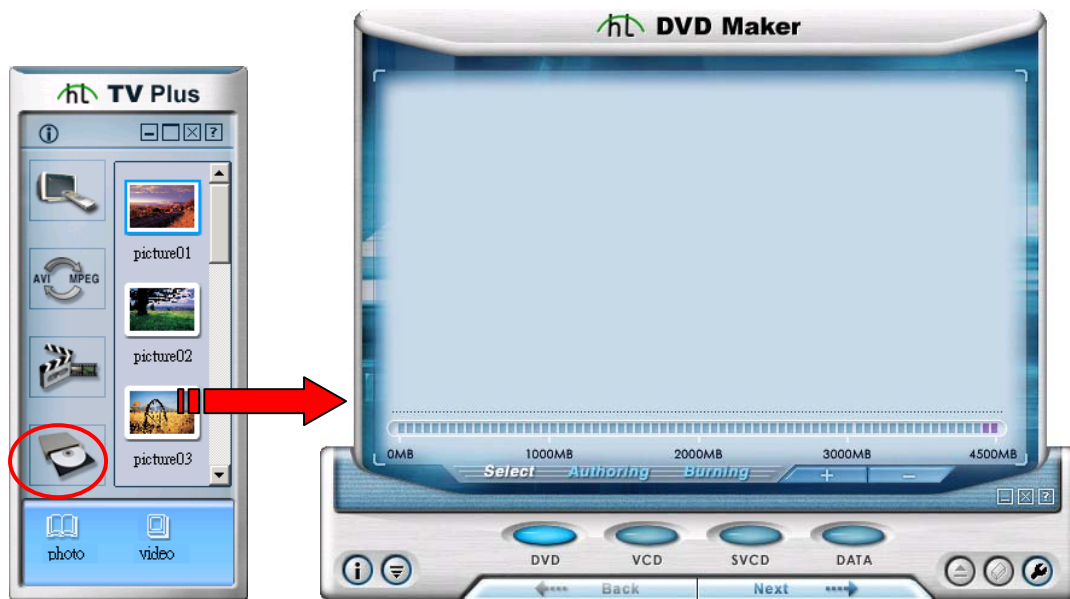
Now you can burn the recorded video clips in VCD format to a disc via **VCD Maker**.

The VCD burning session is outlined as below:

- a) Launch **DVD Maker**.
- b) Define disc format as VCD.
- c) Add video files.
- d) Burn the videos to the disc.



Now please refer to the following descriptions for detailed preferences.

1. Double-click **DVD Maker** on the application bar of your TV Plus's interface to launch **DVD Maker**.





- Specify the disc type as **VCD**.



- Click  to open the **Open** window. From the window, choose the desired video files and then click **Open** to add them to the thumbnail window.
- When you have gathered all the intended video items, select  to proceed.
- Select your burner/recorder from the **Drive** list box.



- Choose the **Eject** button, , to insert a CD-R into the recorder.
- Click  to begin burning your VCD. When the process of burning is finished, the burnt disc will be ejected.

## LIMITED WARRANTY

D-Link provides this limited warranty for its product only to the person or entity who originally purchased the product from D-Link or its authorized reseller or distributor.

**Limited Hardware Warranty:** D-Link warrants that the hardware portion of the D-Link products described below ("Hardware") will be free from material defects in workmanship and materials from the date of original retail purchase of the Hardware, for the period set forth below applicable to the product type ("Warranty Period") if the Hardware is used and serviced in accordance with applicable documentation; provided that a completed Registration Card is returned to an Authorized D-Link Service Office within ninety (90) days after the date of original retail purchase of the Hardware. If a completed Registration Card is not received by an authorized D-Link Service Office within such ninety (90) period, then the Warranty Period shall be ninety (90) days from the date of purchase.

<i>Product Type</i>	<i>Warranty Period</i>
Product (excluding power supplies and fans)	One (1) Year
Power Supplies and Fans	One (1) Year
Spare parts and spare kits	Ninety (90) days

D-Link's sole obligation shall be to repair or replace the defective Hardware at no charge to the original owner. Such repair or replacement will be rendered by D-Link at an Authorized D-Link Service Office. The replacement Hardware need not be new or of an identical make, model or part; D-Link may in its discretion may replace the defective Hardware (or any part thereof) with any reconditioned product that D-Link reasonably determines is substantially equivalent (or superior) in all material respects to the defective Hardware. The Warranty Period shall extend for an additional ninety (90) days after any repaired or replaced Hardware is delivered. If a material defect is incapable of correction, or if D-Link determines in its sole discretion that it is not practical to repair or replace the defective Hardware, the price paid by the original purchaser for the defective Hardware will be refunded by D-Link upon return to D-Link of the defective Hardware. All Hardware (or part thereof) that is replaced by D-Link, or for which the purchase price is refunded, shall become the property of D-Link upon replacement or refund.

**Limited Software Warranty:** D-Link warrants that the software portion of the product ("Software") will substantially conform to D-Link's then current functional specifications for the Software, as set forth in the applicable documentation, from the date of original delivery of the Software for a period of ninety (90) days ("Warranty Period"), if the Software is properly installed on approved hardware and operated as contemplated in its documentation. D-Link further warrants that, during the Warranty Period, the magnetic media on which D-Link delivers the Software will be free of physical defects. D-Link's sole obligation shall be to replace the non-conforming Software (or defective media) with software that substantially conforms to D-Link's functional specifications for the Software. Except as otherwise agreed by D-Link in writing, the replacement Software is provided only to the original licensee, and is subject to the terms and conditions of the license granted by D-Link for the Software. The Warranty Period shall extend for an additional ninety (90) days after any replacement Software is delivered. If a material non-conformance is incapable of correction, or if D-Link determines in its sole discretion that it is not practical to replace the non-conforming Software, the price paid by the original licensee for the non-conforming Software will be refunded by D-Link; provided that the non-conforming Software (and all copies thereof) is first returned to D-Link. The license granted respecting any Software for which a refund is given automatically terminates.

### **What You Must Do For Warranty Service:**

**Registration Card.** The Registration Card provided at the back of this manual must be completed and returned to an Authorized D-Link Service Office for each D-Link product within ninety (90) days after the product is purchased and/or licensed. The addresses/telephone/fax list of the nearest Authorized D-Link Service Office is provided in the back of this manual. FAILURE TO PROPERLY COMPLETE AND TIMELY RETURN THE REGISTRATION CARD MAY AFFECT THE WARRANTY FOR THIS PRODUCT.

**Submitting A Claim.** Any claim under this limited warranty must be submitted in writing before the end of the Warranty Period to an Authorized D-Link Service Office. The claim must include a written description of the Hardware defect or Software nonconformance in sufficient detail to allow D-Link to confirm the same. The original product owner must obtain a Return Material Authorization (RMA) number from the Authorized D-Link Service Office and, if requested, provide written proof of purchase of the product (such as a copy of the dated purchase invoice for the product) before the warranty service is provided. After an RMA number is issued, the defective product must be packaged securely in the original or other suitable shipping package to ensure that it will not be damaged in transit, and the RMA number must be prominently marked on the outside of the package. The packaged product shall be insured and shipped to D-Link, 53 Discovery Drive, Irvine CA 92618, with all shipping costs prepaid. D-Link may reject or return any product that is not packaged and shipped in strict compliance with the foregoing requirements, or for which an RMA number is not visible from the outside of the package. The product owner agrees to pay D-Link's reasonable handling and return shipping charges for any product that is not packaged and shipped in accordance with the foregoing requirements, or that is determined by D-Link not to be defective or non-conforming.

### **What Is Not Covered:**

This limited warranty provided by D-Link does not cover:

Products that have been subjected to abuse, accident, alteration, modification, tampering, negligence, misuse, faulty installation, lack of reasonable care, repair or service in any way that is not contemplated in the documentation for the product, or if the model or serial number has been altered, tampered with, defaced or removed;

Initial installation, installation and removal of the product for repair, and shipping costs;

Operational adjustments covered in the operating manual for the product, and normal maintenance;

Damage that occurs in shipment, due to act of God, failures due to power surge, and cosmetic damage; and

Any hardware, software, firmware or other products or services provided by anyone other than D-Link.

**Disclaimer of Other Warranties:** EXCEPT FOR THE LIMITED WARRANTY SPECIFIED HEREIN, THE PRODUCT IS PROVIDED "AS-IS" WITHOUT ANY WARRANTY OF ANY KIND INCLUDING, WITHOUT LIMITATION, ANY WARRANTY OF MERCHANTABILITY, FITNESS FOR A PARTICULAR PURPOSE AND NON-INFRINGEMENT. IF ANY IMPLIED WARRANTY CANNOT BE DISCLAIMED IN ANY TERRITORY WHERE A PRODUCT IS SOLD, THE DURATION OF SUCH IMPLIED WARRANTY SHALL BE LIMITED TO NINETY (90) DAYS. EXCEPT AS EXPRESSLY COVERED UNDER THE LIMITED WARRANTY PROVIDED HEREIN, THE ENTIRE RISK AS TO THE QUALITY, SELECTION AND PERFORMANCE OF THE PRODUCT IS WITH THE PURCHASER OF THE PRODUCT.

**Limitation of Liability:** TO THE MAXIMUM EXTENT PERMITTED BY LAW, D-LINK IS NOT LIABLE UNDER ANY CONTRACT, NEGLIGENCE, STRICT LIABILITY OR OTHER LEGAL OR EQUITABLE THEORY FOR ANY LOSS OF USE OF THE PRODUCT, INCONVENIENCE OR DAMAGES OF ANY CHARACTER, WHETHER DIRECT, SPECIAL, INCIDENTAL OR CONSEQUENTIAL (INCLUDING, BUT NOT LIMITED TO, DAMAGES FOR LOSS OF GOODWILL, WORK STOPPAGE, COMPUTER FAILURE OR MALFUNCTION, LOSS OF INFORMATION OR DATA CONTAINED IN, STORED ON, OR INTEGRATED WITH ANY PRODUCT RETURNED TO D-LINK FOR WARRANTY SERVICE) RESULTING FROM THE USE OF THE PRODUCT, RELATING TO WARRANTY

SERVICE, OR ARISING OUT OF ANY BREACH OF THIS LIMITED WARRANTY, EVEN IF D-LINK HAS BEEN ADVISED OF THE POSSIBILITY OF SUCH DAMAGES. THE SOLE REMEDY FOR A BREACH OF THE FOREGOING LIMITED WARRANTY IS REPAIR, REPLACEMENT OR REFUND OF THE DEFECTIVE OR NON-CONFORMING PRODUCT.

**GOVERNING LAW:** This Limited Warranty shall be governed by the laws of the state of California.

Some states do not allow exclusion or limitation of incidental or consequential damages, or limitations on how long an implied warranty lasts, so the foregoing limitations and exclusions may not apply. This limited warranty provides specific legal rights and the product owner may also have other rights which vary from state to state.

#### **Wichtige Sicherheitshinweise**

1. Bitte lesen Sie sich diese Hinweise sorgfältig durch.
2. Heben Sie diese Anleitung für den spätern Gebrauch auf.
3. Vor jedem Reinigen ist das Gerät vom Stromnetz zu trennen. Verwenden Sie keine Flüssig- oder Aerosolreiniger. Am besten dient ein angefeuchtetes Tuch zur Reinigung.
4. Um eine Beschädigung des Gerätes zu vermeiden sollten Sie nur Zubehöerteile verwenden, die vom Hersteller zugelassen sind.
5. Das Gerät ist vor Feuchtigkeit zu schützen.
6. Bei der Aufstellung des Gerätes ist auf sicheren Stand zu achten. Ein Kippen oder Fallen könnte Verletzungen hervorrufen. Verwenden Sie nur sichere Standorte und beachten Sie die Aufstellhinweise des Herstellers.
7. Die Belüftungsöffnungen dienen zur Luftzirkulation die das Gerät vor Überhitzung schützt. Sorgen Sie dafür, daß diese Öffnungen nicht abgedeckt werden.
8. Beachten Sie beim Anschluß an das Stromnetz die Anschlußwerte.
9. Die Netzanschlußsteckdose muß aus Gründen der elektrischen Sicherheit einen Schutzleiterkontakt haben.
10. Verlegen Sie die Netzanschlußleitung so, daß niemand darüber fallen kann. Es sollte auch nichts auf der Leitung abgestellt werden.
11. Alle Hinweise und Warnungen die sich am Geräten befinden sind zu beachten.
12. Wird das Gerät über einen längeren Zeitraum nicht benutzt, sollten Sie es vom Stromnetz trennen. Somit wird im Falle einer Überspannung eine Beschädigung vermieden.
13. Durch die Lüftungsöffnungen dürfen niemals Gegenstände oder Flüssigkeiten in das Gerät gelangen. Dies könnte einen Brand bzw. Elektrischen Schlag auslösen.
14. Öffnen Sie niemals das Gerät. Das Gerät darf aus Gründen der elektrischen Sicherheit nur von autorisiertem Servicepersonal geöffnet werden.
15. Wenn folgende Situationen auftreten ist das Gerät vom Stromnetz zu trennen und von einer qualifizierten Servicestelle zu überprüfen:
  - a – Netzkabel oder Netzstecker sind beschädigt.
  - b – Flüssigkeit ist in das Gerät eingedrungen.
  - c – Das Gerät war Feuchtigkeit ausgesetzt.
  - d – Wenn das Gerät nicht der Bedienungsanleitung entsprechend funktioniert oder Sie mit Hilfe dieser Anleitung keine Verbesserung erzielen.
  - e – Das Gerät ist gefallen und/oder das Gehäuse ist beschädigt.
  - f – Wenn das Gerät deutliche Anzeichen eines Defektes aufweist.
16. Bei Reparaturen dürfen nur Originalersatzteile bzw. den Originalteilen entsprechende Teile verwendet werden. Der Einsatz von ungeeigneten Ersatzteilen kann eine weitere Beschädigung hervorrufen.
17. Wenden Sie sich mit allen Fragen die Service und Reparatur betreffen an Ihren Servicepartner. Somit stellen Sie die Betriebssicherheit des Gerätes sicher.
18. Zum Netzanschluß dieses Gerätes ist eine geprüfte Leitung zu verwenden, Für einen Nennstrom bis 6A und einem Gerätegewicht größer 3kg ist eine Leitung nicht leichter als H05VV-F, 3G, 0.75mm<sup>2</sup> einzusetzen.

#### **Trademarks**

Copyright ©1999 D-Link Corporation. Contents subject to change without prior notice. D-Link is a registered trademark of D-Link Corporation/D-Link Systems, Inc. All other trademarks belong to their respective proprietors.

#### **Copyright Statement**

No part of this publication may be reproduced in any form or by any means or used to make any derivative such as translation, transformation, or adaptation without permission from D-Link Corporation/D-Link Systems Inc., as stipulated by the United States Copyright Act of 1976.

**CE Mark Warning**

This is a Class B product. In a domestic environment, this product may cause radio interference, in which case the user may be required to take adequate measures

**Warnung!**

Dies ist in Produkt der Klasse B. Im Wohnbereich kann dieses Produkt Funkstörungen verursachen. In diesem Fall kann vom Benutzer verlangt werden, angemessene Massnahmen zu ergreifen.

**Advertencia de Marca de la CE**

Este es un producto de Clase B. En un entorno doméstico, puede causar interferencias de radio, en cuyo caso, puede requerirse al usuario para que adopte las medidas adecuadas.

**Attention!**

Ceci est un produit de classe B. Dans un environnement domestique, ce produit pourrait causer des interférences radio, auquel cas l'utilisateur devrait prendre les mesures adéquates.

**Attenzione!**

Il presente prodotto appartiene alla classe B. Se utilizzato in ambiente domestico il prodotto può causare interferenze radio, nel cui caso è possibile che l'utente debba assumere provvedimenti adeguati.

**FCC Warning**

This equipment has been tested and found to comply with the limits for a Class B digital device, pursuant to part 15 of the FCC Rules. These limits are designed to provide reasonable protection against harmful interference in a residential installation. This equipment generates, uses and can radiate radio frequency energy and, if not installed and used in accordance with the instructions, may cause harmful interference to radio communications. However, there is no guarantee that interference will not occur in a particular installation. If this equipment does cause harmful interference to radio or television reception, which can be determined by turning the equipment off and on, the user is encouraged to try to correct the interference by one or more of the following measures:

- Reorient or relocate the receiving antenna.
- Increase the separation between the equipment and receiver.
- Connect the equipment into an outlet on a circuit different from that to which the receiver is connected.
- Consult the dealer or an experienced radio/ TV technician for help.

# D-Link

Offices

<b>AUSTRALIA</b>	<b>D-LINK AUSTRALIA</b> 1 Giffnock Ave, North Ryde, NSW 2113, Australia TEL: 61-2-8899-1800 FAX: 61-2-8899-1868 TOLL FREE: 1800-177-100 (Australia), 0800-900900 (New Zealand) E-MAIL: support@dlink.com.au, info@dlink.com.au URL: www.dlink.com.au
<b>BENELUX</b>	<b>D-LINK BENELUX</b> Fellenoord 130, 5611 ZB Eindhoven, The Netherlands TEL: 31-40-2668713 FAX: 31-40-2668666 E-MAIL: info@dlink-benelux.nl, info@dlink-benelux.be URL: www.dlink-benelux.nl/, www.dlink-benelux.be/
<b>CANADA</b>	<b>D-LINK CANADA</b> #2180 Winston Park Drive, Oakville, Ontario, L6H 5W1 Canada TEL: 1-905-829-5033 FAX: 1-905-829-5095 FREE CALL: 1-800-354-6522 E-MAIL: techsup@dlink.ca URL: www.dlink.ca FTP: ftp.dlinknet.com
<b>CHILE</b>	<b>D-LINK SOUTH AMERICA</b> Isidora Goyechea 2934 of 702, Las Condes, Santiago – Chile S.A. TEL: 56-2-232-3185 FAX: 56-2-232-0923 E-MAIL: ccasassu@dlink.cl, tsilva@dlink.cl URL: <a href="http://www.dlink.cl">www.dlink.cl</a>
<b>CHINA</b>	<b>D-LINK CHINA</b> 2F., Sigma Building, 49 Zhichun Road, Haidian District, 100080 Beijing, China TEL: 86-10-85182533 FAX: 86-10-85182250
<b>DENMARK</b>	<b>D-LINK DENMARK</b> Naverland 2, DK-2600 Glostrup, Copenhagen, Denmark TEL: 45-43-969040 FAX: 45-43-424347 E-MAIL: info@dlink.dk URL: www.dlink.dk
<b>EGYPT</b>	<b>D-LINK MIDDLE EAST</b> 7 Assem Ebn Sabet Street, Heliopolis Cairo, Egypt TEL: 202-2456176 FAX: 202-2456192 E-MAIL: support@dlink-me.com URL: www.dlink-me.com
<b>FINLAND</b>	<b>D-Link FINLAND</b> Thlli-ja Pakkahuone Katajanokanlaituri 5, FIN-00160 Helsinki, Finland TEL: 358-9-622-91660 FAX: 358-9-622-91661 E-MAIL: info@dlink-fi.com URL: <a href="http://www.dlink-fi.com">www.dlink-fi.com</a>
<b>FRANCE</b>	<b>D-LINK FRANCE</b> Le Florilege #2, Allée de la Fresnerie, 78330 Fontenay le Fleury France TEL: 33-1-302-38688 FAX: 33-1-3023-8689 E-MAIL: info@dlink-france.fr URL: <a href="http://www.dlink-france.fr">www.dlink-france.fr</a>
<b>GERMANY</b>	<b>D-LINK Central Europe/D-Link Deutschland GmbH</b> Schwalbacher Strasse 74, D-65760 Eschborn, Germany TEL: 49-6196-77990 FAX: 49-6196-7799300 INFO LINE: 00800-7250-0000 (toll free) HELP LINE: 00800-7250-4000 (toll free) REPAIR LINE: 00800-7250-8000 E-MAIL: info@dlink.de URL: <a href="http://www.dlink.de">www.dlink.de</a>
<b>IBERIA</b>	<b>D-LINK IBERIA</b> Gran Via de Carlos III, 84, 3º Edificio Trade, 08028 BARCELONA TEL: 34 93 4090770 FAX: 34 93 4910795 E-MAIL: info@linkiberia.es URL: <a href="http://www.dlinkiberia.es">www.dlinkiberia.es</a>
<b>INDIA</b>	<b>D-LINK INDIA</b> Plot No.5, Kurla-Bandra Complex Road, Off Cst Road, Santacruz (E), Bombay - 400 098 India TEL: 91-22-652-6696 FAX: 91-22-652-8914 E-MAIL: service@dlink.india.com URL: <a href="http://www.dlink-india.com">www.dlink-india.com</a>
<b>ITALY</b>	<b>D-LINK ITALIA</b> Via Nino Bonnet No. 6/b, 20154 Milano, Italy TEL: 39-02-2900-0676 FAX: 39-02-2900-1723 E-MAIL: info@dlink.it URL: <a href="http://www.dlink.it">www.dlink.it</a>
<b>JAPAN</b>	<b>D-LINK JAPAN</b> 10F, 8-8-15 Nishi-Gotanda, Shinagawa-ku, Tokyo 141, Japan TEL: 81-3-5434-9678 FAX: 81-3-5434-9868 E-MAIL: kida@d-link.co.jp URL: <a href="http://www.d-link.co.jp">www.d-link.co.jp</a>
<b>NORWAY</b>	<b>D-LINK NORWAY</b> Waldemar Thranesgt. 77, 0175 Oslo, Norway TEL: 47-22-991890 FAX: 47-22-207039
<b>RUSSIA</b>	<b>D-LINK RUSSIA</b> Michurinski Prospekt 49, 117607 Moscow, Russia TEL: 7-095-737-3389, 7-095-737-3492 FAX: 7-095-737-3390 E-MAIL: vl@dlink.ru URL: <a href="http://www.dlink.ru">www.dlink.ru</a>
<b>SINGAPORE</b>	<b>D-LINK INTERNATIONAL</b> 1 International Business Park, #03-12 The Synergy, Singapore 609917 TEL: 65-774-6233 FAX: 65-774-6322 E-MAIL: info@dlink.com.sg URL: <a href="http://www.dlink-intl.com">www.dlink-intl.com</a>
<b>S. AFRICA</b>	<b>D-LINK SOUTH AFRICA</b> 102-106 Witchazel Avenue, Einetein Park 2, Block B, Highveld Technopark Centurion, South Africa TEL: 27(0)126652165 FAX: 27(0)126652186 E-MAIL: attie@d-link.co.za URL: <a href="http://www.d-link.co.za">www.d-link.co.za</a>
<b>SWEDEN</b>	<b>D-LINK SWEDEN</b> P.O. Box 15036, S-167 15 Bromma Sweden TEL: 46-(0)8564-61900 FAX: 46-(0)8564-61901 E-MAIL: info@dlink.se URL: <a href="http://www.dlink.se">www.dlink.se</a>
<b>TAIWAN</b>	<b>D-LINK TAIWAN</b> 2F, No. 119 Pao-Chung Road, Hsin-Tien, Taipei, Taiwan, TEL: 886-2-2910-2626 FAX: 886-2-2910-1515 E-MAIL: dssqa@tsc.dlinktw.com.tw URL: <a href="http://www.dlinktw.com.tw">www.dlinktw.com.tw</a>
<b>U.K.</b>	<b>D-LINK EUROPE</b> 4 <sup>th</sup> Floor, Merit House, Edgware Road, Colindale, London, NW9 5AB, U.K. TEL: 44-20-8731-5555 FAX: 44-20-8731-5511 E-MAIL: info@dlink.co.uk URL: <a href="http://www.dlink.co.uk">www.dlink.co.uk</a>
<b>U.S.A.</b>	<b>D-LINK U.S.A.</b> 53 Discovery Drive, Irvine, CA 92618 USA TEL: 1-949-788-0805 FAX: 1-949-753-7033 INFO LINE: 1-877-453-5465 BBS: 1-949-455-1779, 1-949-455-9616 E-MAIL: tech@dlink.com, support@dlink.com URL: <a href="http://www.dlink.com">www.dlink.com</a>



## Registration Card

**Print, type or use block letters.**

Your name: Mr./Ms \_\_\_\_\_

Organization: \_\_\_\_\_ Dept. \_\_\_\_\_

Your title at organization: \_\_\_\_\_

Telephone: \_\_\_\_\_ Fax: \_\_\_\_\_

Organization's full address: \_\_\_\_\_

Country: \_\_\_\_\_

Date of purchase (Month/Day/Year): \_\_\_\_\_

Product Model	Product Serial No.	* Product installed in type of computer (e.g., Compaq 486)	* Product installed in computer serial No.

(\* Applies to adapters only)

Product was purchased from:

Reseller's name: \_\_\_\_\_

Telephone: \_\_\_\_\_ Fax: \_\_\_\_\_

Reseller's full address: \_\_\_\_\_

**Answers to the following questions help us to support your product:**

**1. Where and how will the product primarily be used?**

Home Office Travel Company Business Home Business Personal Use

**2. How many employees work at installation site?**

1 employee 2-9 10-49 50-99 100-499 500-999 1000 or more

**3. What network protocol(s) does your organization use ?**

XNS/IPX TCP/IP DECnet Others \_\_\_\_\_

**4. What network operating system(s) does your organization use ?**

D-Link LANsmart Novell NetWare NetWare Lite SCO Unix/Xenix PC NFS 3Com 3+Open

Banyan Vines DECnet Pathwork Windows NT Windows NTAS Windows '95

Others \_\_\_\_\_

**5. What network management program does your organization use ?**

D-View HP OpenView/Windows HP OpenView/Unix SunNet Manager Novell NMS

NetView 6000 Others \_\_\_\_\_

**6. What network medium/media does your organization use ?**

Fiber-optics Thick coax Ethernet Thin coax Ethernet 10BASE-T UTP/STP

100BASE-TX 100BASE-T4 100VGAnyLAN Others \_\_\_\_\_

**7. What applications are used on your network?**

Desktop publishing Spreadsheet Word processing CAD/CAM

Database management Accounting Others \_\_\_\_\_

**8. What category best describes your company?**

Aerospace Engineering Education Finance Hospital Legal Insurance/Real Estate Manufacturing

Retail/Chainstore/Wholesale Government Transportation/Utilities/Communication VAR

System house/company Other \_\_\_\_\_

**9. Would you recommend your D-Link product to a friend?**

Yes No Don't know yet

**10. Your comments on this product?**

\_\_\_\_\_  
\_\_\_\_\_

PLEASE  
PLACE STAMP  
HERE

**TO:** \_\_\_\_\_  
\_\_\_\_\_  
\_\_\_\_\_

**D-Link<sup>®</sup>**